

**31st Annual Santa Gertrudis**



**2023**

# **Bull Sale**

**Wednesday 6th September**

**12:00 noon**

**at Roma Saleyards**

**82 Bulls**



 **AuctionsPlus**

*Buy and Sell stock nationally*



# AuctionsPlus

## How to Register and Bid on AuctionPlus

- 1 Go to [www.auctionsplus.com.au](http://www.auctionsplus.com.au) to register at least 48 hours before the sale.
- 2 Select “Sign Up” in the top right hand corner.
- 3 Fill out your name, mobile number, email address and create a password.
- 4 Go to your emails and confirm the account.
- 5 Return to AuctionsPlus and log in.
- 6 Select “**Dashboard**” and then select “**Request Approval to Buy**”.
- 7 Fill in buyer details and once completed go back to Dashboard.
- 8 Complete buyer induction module (approx. 30 minutes).
- 9 AuctionsPlus will email you to let you know that your account has been approved.
- 10 Log in on sale day and connect to auction.
- 11 Bid using the two-step process - unlock the bid button and bid at that price.
- 12 If you are successful, the selling agent will contact you post sale to organise delivery and payment.

For more information please contact us on:

Phone: (02) 9262 4222

Email: [info@auctionsplus.com.au](mailto:info@auctionsplus.com.au)

# Chairman's Message

On behalf of the Heartland Santa Breeders Group. I welcome you to our 31st Annual Bull Sale at the Roma Saleyards Selling Complex.

At the upcoming sale the group will offer 82 Bulls from our 11 vendors that have a good cross section of genetics for all herds

As this goes to print, most areas are looking for good general rain. With the current season, the future forecasts, continued interest rate rises coupled with the significant correction in our cattle market we can expect to see the flow on effect for the industry.

I would like to congratulate Pinaroo Stud on their successful Pinaroo Female Sale at Roma and would like to welcome our new invited studs to the sale.

I would like to thank the committee and all members for their support and wish all buyers the best with their purchases.

If you experience any problems with you purchase do not hesitate to contact the Vendor or PJH Livestock.

Thanks to PJH Livestock for your commitment to our sale.

**Kind Regards**

**Brendan Harrison, Chairman**



## OUTSIDE AGENT'S REBATES

### **4% Rebate**

Agent must Introduce their client at least 24hrs before the sale & accompany them to the sale, sign off & Settle for.

### **2% Rebate**

Agent must Introduce & Settle for.

Group Vendors	Lots	Classified
<b>STUD: DARR CREEK</b> Stud No J331 Mitch, Abbey & Bella Franz Abbey - Publicity Officer "Wahroonga" 6412 Chinchilla-Wondai Hwy Jandowae Qld 4410 Mitch: 0499 688 757    Abbey: 0477 688 755 wahroonga708@bigpond.com	1 - 10  72 - 75	'S'  Com
<b>STUD: PINAROO</b> Stud No 1150 Cameron & Deborah Boot "Pinaroo Plain" Bingara NSW 2404 PH: 0427 545 305 clarenpark2@bigpond.com	11 - 15  76 - 81	'S'  Com
<b>STUD: CHILGERRIE HILL</b> Stud No 991 Adam & Karen Mayes Karen - Secretary "Chilgerrie Hill" 193 Mayes Rd Wandoan Qld 4419 PH: 4627 4918    Mob: 0427 274 918 Karen: 0488 660 431 chilgerrie.hill@gmail.com	16 - 25	'S'
<b>STUD: OAKDALE</b> Stud No 1159 Greg Kroll "Dalmane" M/s 423 Chinchilla Qld 4413 Ph: 4665 4150	26 - 35  64 - 66	'S'  'S'
<b>STUD: GLENVIEW</b> Stud No 558 Margaret Ferguson "Glenview" M/S 233 Nobby Qld 4360 PH: 4696 3232    4996 3163 glenviewglmi@westnet.com.au glenoaks@westnet.com.au	36 - 45  67 - 71	'S'  'S'
<b>STUD: SPRING CREEK</b> Stud No 1833 Andrew & Angela Doering "Strathdarr" 1510 Gil Gil Creek Rd Crooble NSW 2400 PH: 02 6754 0275 Andrew: 0488 532 888    Angela: 0427 532 850 strathdarr@activ8.net.au	46 - 49	'S'
<b>STUD: WHITALBY</b> Stud No 1242 Cameron & Rosemary Drynan Rosemary - Treasurer "Bogong" 3615 Bollon - Dirranbandi Rd Dirranbandi Qld 4486 Mob: 0413 577 923(R)    0428 723 519 (C) crdrynan@gmail.com	50 - 51	'S'

<b>STUD: MURGO</b> Stud No 1468 Paul & Karen Timmins "Maroona" 58373 Warrego Highway Mungallala Qld 4667 Paul: 0499 982 323 Karen: 0437 050 888 P_ktimmins@bigpond.com	52 - 53	'S'
<b>STUD: DUNROBIN</b> Stud No 1489 Brendan & Paula Harrison Brendan - Chairman "Bungaringa" Mitchell Qld 4465 Ph: 4623 2615 Brendan: 0400 999 572 bj.pcharrison@harbourisp.net.au		
<b>STUD: CARNTYNE</b> Stud No 1556 Ben & Carly Evans "Canberra" Roma Qld 4455 Ph: 4626 8387 Mob: 0428 967 896 ben_carly.evans@bigpond.com		
<b>Invited Vendors</b>		
<b>STUD: ROCKYVIEW</b> Stud No 2169 Benjamin Eastwell 83 Moar Rd Pilton Qld 4361 Mob: 0408 176 918 ben@eastwellconstruction.com.au	54 - 57	'S'
<b>STUD: BEEFWOOD</b> Stud No 2176 Brett & Ashlee White 3125 Wallumbilla South Rd Wallumbilla South Qld 4428 Brett: 0438 613 151 Ashlee: 0428 108 439 ashlee.cowarie@gmail.com	58 - 59 82	'S' Com
<b>STUD: JAZMAREE</b> Stud No 2164 Peter & Sharon Seawright 1651 Gunnewin West Road Injune Qld 4454 Sharon: 0418 317 124 Peter: 0427 026 449 jazmaree.santas@gmail.com	60 - 63	'S'
<b>STUD: CG SANTAS</b> Stud No 2155 Steve & Sharon Goodhew "Laurbrook" PO Box 1107 Roma Qld 4455 Mob: 0428 305 810 laurbrook@bigpond.com		

# STUD NOTES (ALPHABETICAL)

## **BEEFWOOD - Stud 2176**

Beefwood is operated by Brett and Ashlee White, along with their four sons: Thomas, Henry, Edward, and Alistair.

In 2007, Brett and his father, registered the Satellite Santa Gertrudis (2085) prefix after purchasing foundation females from Fishington and Wave Hill studs.

The sale of the family property in 2021, resulted in the cessation of the Satellite stud prefix. This led to Brett taking over the management of the female herd. The herd was relocated from Warwick to Wallumbilla and transferred to the newly established Beefwood Santa Gertrudis prefix.

We have a strong commercial focus, aiming to produce easy doing structurally correct cattle, with an emphasis on productivity, fertility, and longevity.

Over the years sires from Fishington, Glenn Oaks, Rosgar, Dundee and more recently Munnabah and Diamond H studs, have been added to achieve these goals. Further females have been added from Kilcock, Bullamakinka, Pinnaroo and Glenn Oaks studs.

The Beefwood herd is run alongside The Bank Shorthorn stud, in conjunction with a commercial Santa Gertrudis Shorthorn cross enterprise. Brett and Ashlee, also operate the WLS Fitting service.

## **CARNTYNE - Stud 1556**

Carntyne Santas is a family operated business owned by Ben & Carly Evans and their children Grace, Oliver & Isla. Their rural enterprise, Tullamore Park Pastoral Co runs around 1500 breeders over 5 properties expanding over the Roma, Surat & Injune districts. The Stud maintains approx. 150 stud females each year for the purpose of breeding bulls for private paddock sales, the Heartland Sale in Roma, as well as for the use in their own stud and their commercial Santa Gertrudis and Brahman herds.



The primary focus is on the overall herd fertility and quality, and by selecting genetics which will continually improve and compliment the current attributes of the existing herd. A lot of emphasis has been placed on using genetics that will produce highly fertile, sound, thick, easy-doing progeny that will fatten easily, have good constitutions and placid temperaments.

Of recent years the Stud's focus has been on selecting suitable and specific Carntyne females for the annual AI programs.

Current AI & stud sires include a number of Carntyne 'S' bulls; Watasanta Landrover (P); Dangarfield Abdul (P); Rosevale King; Waco Chancellor (P); Dangarfield Second-To-None; Waco Odessey (P); Diamond H Quilpie; Dangarfield Zelot (P); Triple S Q20; Triple S Q10; Warena Quicksilver (P); Dangarfield Tornado & Moongana Nudge (P).

Carntyne heifers are joined as yearlings to homebred Santa bulls. They are expected to calve unassisted and reconceive each year. Any female that does not return a PTIC result annually, or is a poor milk producer, is culled from the herd. Additionally all bulls are semen tested annually, and any sire whose progeny returns poor

# STUD NOTES

conception rates and other bad genetic traits, are also culled. A pelvic measurement of all replacement heifers and bulls is an important annual practice that has all but eliminated maiden calving problems in the herd as only those with adequate measurements are retained for breeding. Carntyne cattle are handled by men/women/children with horses, motorbikes, on foot and with dogs (border collies and sausage dogs!)

All Carntyne bulls are bred and prepared for a long working life. They are not pampered or overfed to be the biggest, heaviest bulls at sale age, but the focus is more on good conformation, growth, soundness, fertility, and overall constitutions. Carntyne's aim is to have the best genetics behind them to breed bulls to boost and compliment your breeding program to get the best 'bang for your buck'.

Carntyne Stud will not have any bulls on offer at the Heartland sale this year due to lack of available bull numbers. However, we welcome all enquires and interest in our cattle, and appreciate all feedback, positive / negative, from clients on their previous bull purchases.

We look forward to caching up with you all at the Heartland Sale 2023.

## CG SANTAS - Stud 2155

CG Santa's was established in 2019 by Steven, Sharon & Cooper Goodhew, "Laurbrook" Roma, with the purchase of classified females from Santa Park Stud, Chinchilla. More recently with the purchase of stud females from Moongana and the upgrade of some of our purebred females to S Bar and classified females.



## CHILGERRIE HILL - Stud 991

Santa Gertrudis cattle were introduced in the 1960's when Adams grandparents purchased bulls from Rosevale & Yarrawonga.

A stud was formed in 1974 by Adam's parents. In 1998 Adam & Karen took over the stud.

We recently purchased the Chilgerrie Hill property so are excited to see what the future has in store for us. Hopefully lots of rain & good cattle prices.

We run the stud & also a commercial herd using Santa bulls over them.

Sires in present include Glenabyn Pegasus, Spring Creek Cassidy, Bunda N22, Diamon H Volcano, Chilgerrie Hill 99J, Chilgerrie Hill Mack & Hayleigh Ross.

This year's sale draft are by Chilgerrie Hill 99J who is producing soft easy doing cattle like himself. He is always in excellent condition no matter what the season. Diamond H Volcano has produced some nice growthy cattle. This year sees the first sons of Glenabyn Pegasus & we are very impressed with these young bulls temperament that you can't fault. Plenty of growth, doing ability & a high percentage of poll cattle.

# STUD NOTES

## DARR CREEK - Stud J331

Darr Creek began when our parents Glen & Kathleen purchased us a stud female each at the Raytek dispersal in 2013. We already had classified Santa bulls on hand which were being used in our crossbreeding program and later purchased females from Oakdale, Rosevale and Pinaroo studs.



Mitch was also extremely fortunate to have won two lovely heifers at junior camps donated from Rosevale and Glen Oaks studs. We are continuing to focus on building up a strong herd of quality classified females and thank the Heartland group for inviting us to be full members this year.

This year we offer the first sons of Carntyne Washington (Pictured above) who was the top priced bull at the 2020 sale.

Darr Creek Santas are located north of Jandowae in a mixture of forest and brigalow country.

Mitch, Abbey & Bella Franz

## DUNROBIN - Stud 1489

Dunrobin Stud was started by Roy and Dorothy Harrison with cows upgraded from a commercial herd. In 2017 Dunrobin stud was purchased by Brendan, Paula, Rowan and Lucy Harrison and has been relocated to Bungaringa Mitchell, running in conjunction with our commercial herd.

## GLENVIEW - Stud 558

In 1972, Glenview Stud was registered by Graeme and Margaret Ferguson of Nobby. The stud commenced with the purchase of a sire from Old Hidden Vale and females from Talooona, Myola and Laidlaw studs.

Since the stud commenced, our females have largely maintained a strong King Ranch, Yarrawonga and Waco bloodline, with many sires being purchased from those studs.

Glenview runs approximately 50 breeders, with the stud now run by our son Scott, and his wife Wendy. My breeders run alongside the Glenn Oaks and Wave Hill females, using sires from Diamond H, Goolagong, Yarrawonga and Waco, including Renegade, Red Foo, Leopard, Attorney, H1304, L596, Eland. All of these are sires of this year's sale bulls.

Glenview has consistently sold bulls for above average prices for use in commercial herds as well as selling successful show bulls to studs including Barbados, Granville, Frampton. These bulls have bred well for their purchasers.

This year's sale draft have been vaccinated for 7 in 1, vibrio, 3 Day and blooded for 3 germ blood.



# STUD NOTES

## **JAZMAREE – Stud 2164**

Jazmaree Santas was Registered in 2020 by Peter & Sharon Seawright. We have for many years been passionate Santa Gertrudis breeders and have over the last few years been developing our Santa Gertrudis Stud herd. We are based at "Comet Downs" Injune. To give you some idea of our passion for the breed, we purchased our first commercial heifers from Sharon's parents Rod & Nancy Cloherty "Reben Downs" Injune. They have been breeding Santas for over 50 years, Their Sires over the past years have been purchased from Swan Hill, Yarrawonga, Waratah, Diamond H, Moongana, Bullamakinka, Talgai, Glenview and more.

We have invested heavily in the breed with the purchase of stud females and classified stud sires from a large range of genetics and have also upgraded selected purebred females to S Bar into our stud.

Sale Bulls will be vet checked by Roma Vet Clinic, Morphology tested, scanned, vaccinated for 7in1, Vibrio, Three Day and Blooded for 3 germ blood. Peter & Sharon

## **MURGO – Stud 1468**

Murgo Santa Gertrudis Stud began in the mid 1980s in northern N.S.W. We bred over from Herefords to avoid recurring problems with calving and pink eye. At the same time, we admired the natural "doing" ability of these beautiful big, cherry-red cattle and how well they adapted to their environment.

We moved to Queensland in 1993, finally settling at "Maroona", Mungallala in 2003. From here, we have successfully continued to develop our stud by buying sires from such studs as Dangarfield, Pinaroo and Rosevale and using our own Murgo 630 and Murgo 703.

It is now several years since we sold bulls through the Heartland sale – having battled drought (like so many others) for a long while. However, we have continued to sell bulls out of the paddock to locals as well as far away as Winton. The fact that these producers are becoming repeat buyers speaks volumes for our bulls' success.

This year's offerings are both by Dangerfield Carbine [P] (Sire –Greenup Leicester L76 from Dangarfield Quarterback [P]) and are the first progeny from this bull. The bulls are perfect examples of the type of bull we have been aiming to breed with typical Santa Gertrudis traits – dark coat, good bone, width, muscle, growth, depth and weight for age. We are very pleased with these results and look forward to using Carbine again in our herd as he displays a very quiet temperament and ticks all the boxes for a worthy sire.

# STUD NOTES

## OAKDALE – Stud 1159

The Oakdale Stud was founded at Boonah in 1980. It was relocated to Chinchilla in 1993. This will be our 29th year selling at Heartland.

Present sires in use are Oakdale Longbow whose sons have sold to \$42000 and averaged \$15000.

Longbow is our leading sire. He had a very successful short show career.

Dangarfield Anzac was purchased for the top price of his year. He has bred very much like himself and his sons have sold to \$13000. He is producing quality females who are proving to be very fertile.

A very quiet bull unfortunately we found Anzac dead in his paddock.

Bullamakinka P186 was purchased in partnership with the Valley View Stud. He is not a real big bull, but his progeny are very thick & they are very eye appealing.



**OAKDALE PRINCE**

## PINAROO – Stud 1150

The Pinaroo Stud No. 1150 was started by Peter and Robin Cupitt in 1982. Together they enjoyed over 40 years of successful breeding, showing and selling of stud cattle. Sadly, the passing of Peter in early 2022 resulted in the winding up of their partnership and an End of Era female sale in March 2023.

However, a decision was made to retain the stud name and the purebred commercial female herd and some proven stud sires, which will be used to grade up the herd under the ownership and management of Cameron and Deborah Boot, who have worked with Peter and Robin for over 25 years.

## ROCKY VIEW – Stud 2169

Rocky View is a small stud located in the Pilton district on the Darling Downs, established around seven years ago by Ben and Michelle Eastwell. Also, we have a small commercial herd of Santa cross breeders and run an off-farm business – Eastwell Construction.

The stud's bloodlines range from various genetics, Oakdale, Pinaroo, Dangerfield, Talgai, Tyndale and Dunlop to name a few, we are slowly building our stud herd up.

2023 is our second year selling with the Heartland Group, as an Invited Member which we are very appreciative of. This year we offer a draft of 4 classified polled bulls sired by Oakdale Gaffa (P) and Talgai Castlemaine (P).

# STUD NOTES

## SPRING CREEK – Stud 1833

The Spring Creek Stud is operated by Andrew and Angela Doering and family.

Currently, the breeding herd is run on properties in Qld, at St George and in the South Burnett, with numbers exceeding 400 classified females and still growing.

We have recently completed DNA and gene testing across our entire herd, to guarantee the pedigrees of our cattle and aid decision making within our breeding program.

The following Sires are represented in our 2023 Heartland Sale offering;

Warrillee N19 (P) was purchased for the top price at the 2020 Brisbane Valley Santa sale. He was selected for his strong muscling and correctness of structure and is producing offspring carrying these traits and exhibiting excellent breed character.

Spring Creek Neptune N414 (PS), is an exceptional son of Bullamakinka Gladiator G52, and grandson of the renowned Canowindra Gold Edition. He was retained for his length and volume, breed character and temperament, but also to maintain this bloodline in our herd as it has consistently produced quality progeny for us.

Our selection criteria for breeding are strongly focused on commercial traits. We believe that fertility, growth, muscling, constitution, conformation and particularly temperament, are all vital criteria when selecting stud stock. We also use a balance of poll and horned sires, in order to maintain breed type and the sought-after qualities Santa Gertrudis are renowned for.

## WHITALBY – Stud 1242

Operated by Cameron & Rosie Drynan along with their young children Oscar, Paige and Dusty, the Whitalby Santa Gertrudis stud was established in the 1980's at "Bogong" South West of St George.

The stud herd is run on predominately buffel mulgalands, where they demonstrate their ability to survive and maintain production throughout dry spells. Our breeding aim is to produce structurally correct and commercially productive cattle, with a strong focus on temperament and fertility. Some of our current sires include Strathmore Maxwell (P), Bullamakinka N518 (PP), Warenda P30 (P) and Hayleigh 1181 (P). We endeavour to stay up to date with market demands, whilst maintaining a true Santa Gertrudis type.

# Life Members

Bill & Leah Fisher

Bill & Sandra Henzell

John & Bev Blair

Brent & Lyn Harris

Graeme Ferguson



**RIVERINA** STOCKFEEDS

## ARE YOUR SANTAS SALE-READY?

Enhance growth, hoof health and coat condition with Riverina Stockfeeds'

- XLR8 Pellets and
- Sale & Show Pellets / Meal

Chat with a Riverina nutritionist about the benefits today!

[www.riverina.com.au](http://www.riverina.com.au)





# The Overlander Homestead Motel and Restaurant

**ROMA**

**4 ½ stars**

**07 4622 3555**

**[overlandermotel.com.au](http://overlandermotel.com.au)**



# Darr Creek T201 (PS)

## 'S' Bull

1



**IDENT NO:** DRC21MT201  
**TATTOO:** T201

**D.O.B:** 19/07/21  
**VENDOR:** M A & B FRANZ

**AGE:** 25 MONTHS

DUNLOP INDIGO  
CARNTYNE NEVILLE  
CARNTYNE 319 (P)

**INOCULATIONS:**  
\* 3 GERM  
\* 3 DAY  
\* 7 IN 1  
\* VIBRIO

**SIRE: CARNTYNE WASHINGTON 4286**

MULTIPLE DAM

PINAROO 1576 (P)  
PINAROO 1671  
PINAROO X77

**DAM: DARR CREEK P914 (P)**

MULTIPLE SIRE  
PINAROO 9616

MULTIPLE DAM

DARR CREEK T201'S SIRE CARNTYNE WASHINGTON WAS THE TOP PRICED BULL PURCHASED AT THE 2020 HEARTLAND SALE. HE HAS PASSED ON HIS LOVELY TEMPERAMENT & BREED CHARACTERISTICS TO HIS PROGENY. A HEIFER'S FIRST CALF, DISPLAYING GREAT BONE.

Purchaser \_\_\_\_\_ \$ \_\_\_\_\_

WGT	DWG	EMA	FAT	SC

# Darr Creek T205 (PS)

## 'S' Bull

2



**IDENT NO:** DRC21MT205  
**TATTOO:** T205

**D.O.B:** 22/07/21  
**VENDOR:** M A & B FRANZ

**AGE:** 25 MONTHS

DUNLOP INDIGO  
 CARNTYNE NEVILLE  
 CARNTYNE 319 (P)

**INOCULATIONS:**

- \* 3 GERM
- \* 3 DAY
- \* 7 IN 1
- \* VIBRIO

**SIRE: CARNTYNE WASHINGTON 4286**

MULTIPLE DAM

PINAROO 1576 (P)  
 PINAROO 1671  
 PINAROO X77

**DAM: DARR CREEK P913 (P)**

MULTIPLE SIRE  
 PINAROO 551

MULTIPLE DAM

THIS EYE APPEALING WASHINGTON SON ALSO POSSESSES HIS SIRE'S QUIET TEMPERAMENT. A VERY GROWTHY BULL & IS A HEIFERS FIRST CALF.

Purchaser \_\_\_\_\_ \$ \_\_\_\_\_

WGT	DWG	EMA	FAT	SC

# Darr Creek T217 (P)

## 'S' Bull

3



IDENT NO: DRC21MT217  
TATTOO: T217

D.O.B: 03/11/21  
VENDOR: M A & B FRANZ

AGE: 21 MONTHS

STRATHMORE F672  
ROSEVALE JACKAROO J566 (P)  
ROSEVALE HARMONY F219

INOCULATIONS:

- \* 3 GERM
- \* 3 DAY
- \* 7 IN 1
- \* VIBRIO

### SIRE: DARR CREEK P923

WIGHTFIELDS DOWNPOUR G21 (P)  
ROSEVALE DAMARIS K577  
ROSEVALE DAMARIS F449 (P)  
ROSEVALE NODDY Z716 (P)  
RAYTEK NODDY (P)  
RAYTEK Y38

### DAM: RAYTEK J16 (P)

WAVE HILL UMPIRE  
WAVE HILL Z111 (P)  
WAVE HILL U102

A POLLED GRANDSON OF ROSEVALE JACKAROO. HIS DAM WAS BROKEN IN AND LED AT THE SANTA GERTRUDIS YOUTH CAMP AS A HEIFER.

Purchaser \_\_\_\_\_ \$ \_\_\_\_\_

WGT	DWG	EMA	FAT	SC



# Darr Creek T223 (P)

## 'S' Bull

4



**IDENT NO:** DRC21MT223  
**TATTOO:** T223

**D.O.B:** 16/09/21  
**VENDOR:** M A & B FRANZ

**AGE:** 23 MONTHS

STRATHMORE F672  
ROSEVALE JACKAROO J566 (P)  
ROSEVALE HARMONY F219

**INOCULATIONS:**

- \* 3 GERM
- \* 3 DAY
- \* 7 IN 1
- \* VIBRIO

### **SIRE: DARR CREEK P923**

WIGHTFIELDS DOWNPOUR G21 (P)  
ROSEVALE DAMARIS K577  
ROSEVALE DAMARIS F449 (P)

KULOOMBA BRO 408 (P)  
KULOOMBA PETER 444 (P)  
KULOOMBA 208 (PS)

### **DAM: ROSEVALE ANITA P1227 (P)**

ROSEVALE EMPIRE E464  
ROSEVALE ANITA L111 (P)  
ROSEVALE ANITA D109 (P)

ANOTHER POLLED JACKAROO GRANDSON WITH LOVELY TEMPERAMENT & GOOD DEPTH OF BODY. HIS DAM WAS SHOWN LIGHTLY AS A HEIFER.

Purchaser \_\_\_\_\_ \$ \_\_\_\_\_

WGT	DWG	EMA	FAT	SC

# Darr Creek T200

## 'S' Bull

5



**IDENT NO:** DRC21MT200  
**TATTOO:** T200

**D.O.B:** 12/07/21  
**VENDOR:** M A & B FRANZ

**AGE:** 25 MONTHS

DUNLOP INDIGO  
 CARNTYNE NEVILLE  
 CARNTYNE 319 (P)

**INOCULATIONS:**  
 \* 3 GERM  
 \* 3 DAY  
 \* 7 IN 1  
 \* VIBRIO

**SIRE: CARNTYNE WASHINGTON 4286**

MULTIPLE DAM

MULTIPLE SIRE

**DAM: DARR CREEK P824**

MULTIPLE SIRE  
 PINAROO 863  
 MULTIPLE DAM

A BULL WITH GREAT LENGTH & DEPTH OF BODY & A LOVELY TROPICAL COAT. CARRIES HIMSELF WELL & IS SHOWING GREAT POTENTIAL.

Purchaser \_\_\_\_\_ \$ \_\_\_\_\_

WGT	DWG	EMA	FAT	SC

# Darr Creek T204

## 'S' Bull

6



**IDENT NO:** DRC21MT204  
**TATTOO:** T204

**D.O.B:** 22/07/21  
**VENDOR:** M A & B FRANZ

**AGE:** 25 MONTHS

DUNLOP INDIGO  
 CARNTYNE NEVILLE  
 CARNTYNE 319 (P)

**INOCULATIONS:**  
 \* 3 GERM  
 \* 3 DAY  
 \* 7 IN 1  
 \* VIBRIO

**SIRE: CARNTYNE WASHINGTON 4286**

MULTIPLE DAM

PINAROO 1576 (P)  
 PINAROO 1671  
 PINAROO X77

**DAM: DARR CREEK P905**

MULTIPLE SIRE  
 PINAROO 751

MULTIPLE DAM

HEIFER'S FIRST CALF.

Purchaser \_\_\_\_\_ \$ \_\_\_\_\_

WGT	DWG	EMA	FAT	SC

# Darr Creek T234

## 'S' Bull

7

**IDENT NO:** DRC21MT234

**D.O.B:** 28/11/21

**AGE:** 21 MONTHS

**TATTOO:** T234

**VENDOR:** M A & B FRANZ

ROSEVALE EMPIRE E464

ROSEVALE JOYRIDE J458

ROSEVALE IMAGE E83

**SIRE: DARR CREEK PRIDE 803**

WIGHTFIELDS DOWNPOUR G21 (P)

ROSEVALE BAUHINIA L3 (P)

ROSEVALE BAUHINIA H95 (PS)

**INOCULATIONS:**

\* 3 GERM

\* 3 DAY

\* 7 IN 1

\* VIBRIO

MULTIPLE SIRE

**DAM: DARR CREEK 815**

MULTIPLE SIRE

PINAROO 580

MULTIPLE DAM

ANYONE LOOKING FOR A HEIFER BULL, THIS BULL WOULD BE IDEAL AS HIS SIRE DARR CREEK PRIDE WAS USED SPECIFICALLY OVER HEIFERS IN OUR HERD.

Purchaser \_\_\_\_\_ \$ \_\_\_\_\_

WGT	DWG	EMA	FAT	SC

# Darr Creek T251

## 'S' Bull

8

**IDENT NO:** DRC22MT251

**D.O.B:** 05/02/22

**AGE:** 19 MONTHS

**TATTOO:** T251

**VENDOR:** M A & B FRANZ

YARRAWONGA AVENGER G300 (PS)

YARRAWONGA KIMBO K392 (P)

YARRAWONGA DAISY J17 (P)

**SIRE: DUNLOP P406**

MULTIPLE DAM

**INOCULATIONS:**

\* 3 GERM

\* 3 DAY

\* 7 IN 1

\* VIBRIO

MULTIPLE SIRE

**DAM: PINAROO 751**

MULTIPLE DAM

ONE OF THE YOUNGEST BULLS IN THE DRAFT, A BULL THAT STANDS ON GOOD BONE WITH A GOOD CLEAN SHEATH

Purchaser \_\_\_\_\_ \$ \_\_\_\_\_

WGT	DWG	EMA	FAT	SC

# Darr Creek T206

## 'S' Bull

9

**IDENT NO:** DRC21MT206

**D.O.B:** 15/07/21

**AGE:** 25 MONTHS

**TATTOO:** T206

**VENDOR:** M A & B FRANZ

DUNLOP INDIGO  
CARNTYNE NEVILLE  
CARNTYNE 319 (P)

**INOCULATIONS:**

\* 3 GERM

\* 3 DAY

\* 7 IN 1

\* VIBRIO

**SIRE: CARNTYNE WASHINGTON 4286**

MULTIPLE DAM

PINAROO 1576 (P)  
PINAROO 1671  
PINAROO X77

**DAM: DARR CREEK P912**

MULTIPLE SIRE

PINAROO 6563

Purchaser \_\_\_\_\_ \$ \_\_\_\_\_

WGT	DWG	EMA	FAT	SC

# Darr Creek T210

## 'S' Bull

10

**IDENT NO:** DRC21MT210

**D.O.B:** 26/08/21

**AGE:** 23 MONTHS

**TATTOO:** T210

**VENDOR:** M A & B FRANZ

DUNLOP INDIGO  
CARNTYNE NEVILLE  
CARNTYNE 319 (P)

**INOCULATIONS:**

\* 3 GERM

\* 3 DAY

\* 7 IN 1

\* VIBRIO

**SIRE: CARNTYNE WASHINGTON 4286**

MULTIPLE DAM

PINAROO 1576 (P)  
PINAROO 1671  
PINAROO X77

**DAM: DARR CREEK P911**

MULTIPLE SIRE

PINAROO 863

MULTIPLE DAM

Purchaser \_\_\_\_\_ \$ \_\_\_\_\_

WGT	DWG	EMA	FAT	SC

# Pinaroo 1880

## 'S' Bull

# 11

**IDENT NO:** PIN21M1880

**D.O.B:** 10/07/21

**AGE:** 25 MONTHS

**TATTOO:** 1880

**VENDOR:** C & DJ BOOT

RAYTEK DEMOCRAT (P)  
ROSEVALE JOSE J192 (P)  
ROSEVALE TIARA E555 (P)

**INOCULATIONS:**

\* 7 IN 1

\* VIBRIO

**SIRE: HAYLEIGH 867**

WARENDA D476  
HAYLEIGH 033 (PS)

MULTIPLE SIRE

**DAM: PINAROO 1087**

MULTIPLE DAM

Purchaser \_\_\_\_\_ \$ \_\_\_\_\_

WGT	DWG	EMA	FAT	SC

# Pinaroo 1883 (P)

## 'S' Bull

# 12

**IDENT NO:** PIN21M1883

**D.O.B:** 10/06/21

**AGE:** 26 MONTHS

**TATTOO:** 1883

**VENDOR:** C & DJ BOOT

RAYTEK DEMOCRAT (P)  
ROSEVALE JOSE J192 (P)  
ROSEVALE TIARA E555 (P)

**INOCULATIONS:**

\* 7 IN 1

\* VIBRIO

**SIRE: HAYLEIGH 867**

WARENDA D476  
HAYLEIGH 033 (PS)

MULTIPLE

**DAM: PINAROO 1180 (P)**

MULTIPLE

Purchaser \_\_\_\_\_ \$ \_\_\_\_\_

WGT	DWG	EMA	FAT	SC

# Pinaroo 1890

## 'S' Bull

# 13

**IDENT NO:** PIN21M1890

**D.O.B:** 18/09/21

**AGE:** 23 MONTHS

**TATTOO:** 1890

**VENDOR:** C & DJ BOOT

MULTIPLE

**INOCULATIONS:**

\* 7 IN 1

\* VIBRIO

**SIRE: PINAROO 1799**

MULTIPLE

PINAROO 1209

PINAROO 1612

PINAROO Y5

**DAM: PINAROO 1034**

MULTIPLE

Purchaser \_\_\_\_\_ \$ \_\_\_\_\_

WGT	DWG	EMA	FAT	SC

# Pinaroo 1899 (P)

## 'S' Bull

# 14

**IDENT NO:** PIN21M1899

**D.O.B:** 08/09/21

**AGE:** 23 MONTHS

**TATTOO:** 1899

**VENDOR:** C & DJ BOOT

PINAROO 709

PINAROO 1097 (PS)

PINAROO T400

**SIRE: PINAROO 1436 (PS)**

PINAROO 930

PINAROO X77

**INOCULATIONS:**

\* 7 IN 1

\* VIBRIO

PINAROO 709

PINAROO 1296 (P)

PINAROO P211

**DAM: PINAROO 896**

HILLSIDE 960

PINAROO 541

Purchaser \_\_\_\_\_ \$ \_\_\_\_\_

WGT	DWG	EMA	FAT	SC

**Pinaroo 3313**

**'S' Bull**

**15**

**IDENT NO:** PIN21M3313

**D.O.B:** 18/09/21

**AGE:** 23 MONTHS

**TATTOO:** 3313

**VENDOR:** C & DJ BOOT

**INOCULATIONS:**

\* 7 IN 1

\* VIBRIO

**SIRE: MULTIPLE**

MULTIPLE

**DAM: PINAROO 1159**

MULTIPLE

Purchaser \_\_\_\_\_ \$ \_\_\_\_\_

WGT	DWG	EMA	FAT	SC

**FREE FREIGHT\***  
**available to:**

- Longreach
- Toowoomba
- Charleville
- Emerald
- Taroom
- St George
- Injune
- Beaudesert

\*conditions apply



# Chilgerrie Hill Orion (P)

'S' Bull

16



IDENT NO: CHI22MB488

D.O.B: 18/12/21

AGE: 20 MONTHS

TATTOO: B488

VENDOR: AS & KJ MAYES

WACO CHEVRON H1305 (P)

BURRAMURRA 188 (P)

BURRAMURRA 31

INOCULATIONS:

\* 3 GERM BLOOD

\* 7 IN 1

\* VIBRIO

## SIRE: GLENALBYN PEGASUS

GLEN OAKS JET LAG J164 (P)

GLENALBYN MINOGUE 659

GLENALBYN 448

DIAMOND H GENERAL (P)

DIAMOND H QUESTMAN

DIAMOND H GYPSY

## DAM: CHILGERRIE HILL B433

CHILGERRIE HILL CLARET J25

CHILGERRIE HILL B345

CHILGERRIE HILL B245

Purchaser \_\_\_\_\_ \$ \_\_\_\_\_

WGT	DWG	EMA	FAT	SC

# Chilgerrie Hill Ozzie

## 'S' Bull

17



**IDENT NO:** CHI22MB511

**D.O.B:** 12/12/21

**AGE:** 20 MONTHS

**TATTOO:** B511

**VENDOR:** AS & KJ MAYES

WACO CHEVRON H1305 (P)

BURRAMURRA 188 (P)

BURRAMURRA 31

**INOCULATIONS:**

\* 3 GERM BLOOD

\* 7 IN 1

\* VIBRIO

### **SIRE: GLENALBYN PEGASUS**

GLEN OAKS JET LAG J164 (P)

GLENALBYN MINOGUE 659

GLENALBYN 448

DIAMOND H GENERAL (P)

DIAMOND H QUESTMAN

DIAMOND H GYPSY

### **DAM: CHILGERRIE HILL B444 (P)**

CHILGERRIE HILL DESPARADO

CHILGERRIE HILL B334

CHILGERRIE HILL CARLY B109

Purchaser \_\_\_\_\_ \$ \_\_\_\_\_

WGT	DWG	EMA	FAT	SC

# Chilgerrie Hill B501 (P)

## 'S' Bull

18



IDENT NO: CHI22MB501

D.O.B: 18/11/21

AGE: 21 MONTHS

TATTOO: B501

VENDOR: AS & KJ MAYES

DUNLOP KAISER (PS)

GLEN OAKS LAMBERT L25 (P)

GLEN OAKS B66 (P)

INOCULATIONS:

\* 3 GERM BLOOD

\* 7 IN 1

\* VIBRIO

### SIRE: DIAMOND H VOLCANO

WARENDA SCORPIO

DIAMOND H M298

DIAMOND H 1195

DIAMOND H GENERAL (P)

DIAMOND H QUESTMAN

DIAMOND H GYPSY

### DAM: CHILGERRIE HILL B246

TYNDALE 210 (P)

CHILGERRIE HILL B288

CHILGERRIE HILL YOLANDA A986 (P)

Purchaser \_\_\_\_\_ \$ \_\_\_\_\_

WGT	DWG	EMA	FAT	SC

# Chilgerrie Hill B514 (P)

## 'S' Bull

19



IDENT NO: CHI22MB514

D.O.B: 04/01/22

AGE: 20 MONTHS

TATTOO: B514

VENDOR: AS & KJ MAYES

DUNLOP KAISER (PS)

GLEN OAKS LAMBERT L25 (P)

GLEN OAKS B66 (P)

INOCULATIONS:

\* 3 GERM BLOOD

\* 7 IN 1

\* VIBRIO

### SIRE: DIAMOND H VOLCANO

WARENDA SCORPIO

DIAMOND H M298

DIAMOND H 1195

DIAMOND H GENERAL (P)

DIAMOND H QUESTMAN

DIAMOND H GYPSY

### DAM: CHILGERRIE HILL B396

MULTIPLE

CHILGERRIE HILL 2X

MULTIPLE

Purchaser \_\_\_\_\_ \$ \_\_\_\_\_

WGT	DWG	EMA	FAT	SC

# Chilgerrie Hill Ottoman (P)

## 'S' Bull

20



IDENT NO: CHI22MB500  
TATTOO: B500

D.O.B: 14/12/21  
VENDOR: AS & KJ MAYES

AGE: 20 MONTHS

WACO CHEVRON H1305 (P)  
BURRAMURRA 188 (P)  
BURRAMURRA 31

INOCULATIONS:  
\* 3 GERM BLOOD  
\* 7 IN 1  
\* VIBRIO

### SIRE: GLENALBYN PEGASUS

GLEN OAKS JET LAG J164 (P)  
GLENALBYN MINOGUE 659  
GLENALBYN 448

BALGAREE GENERAL  
CHILGERRIE HILL DESPERADO J44  
CHILGERRIE HILL ZOEY J16

### DAM: CHILGERRIE HILL B335

TYNDALE 210 (P)  
CHILGERRIE HILL B108  
CHILGERRIE HILL A722

Purchaser \_\_\_\_\_ \$ \_\_\_\_\_

WGT	DWG	EMA	FAT	SC

# Chilgerrie Hill B521 (P)

## 'S' Bull

21



IDENT NO: CHI22MB521

D.O.B: 08/02/22

AGE: 18 MONTHS

TATTOO: B521

VENDOR: AS & KJ MAYES

DIAMOND H GENERAL (P)

DIAMOND H QUESTMAN

DIAMOND H GYPSY

INOCULATIONS:

\* 3 GERM BLOOD

\* 7 IN 1

\* VIBRIO

### SIRE: CHILGERRIE HILL 99J

WAVE HILL YOKEL

WAVE HILL G47

WAVE HILL D611 (P)

DIAMOND H GENERAL (P)

DIAMOND H QUESTMAN

DIAMOND H GYPSY

### DAM: CHILGERRIE HILL B455

ROCKINGHAM DOC D8

CHILGERRIE HILL B264

CHILGERRIE HILL 994

Purchaser \_\_\_\_\_ \$ \_\_\_\_\_

WGT	DWG	EMA	FAT	SC

# Chilgerrie Hill B490 (P)

## 'S' Bull

22

IDENT NO: CHI22MB490

D.O.B: 24/02/22

AGE: 18 MONTHS

TATTOO: B490

VENDOR: AS & KJ MAYES

WACO CHEVRON H1305 (P)  
BURRAMURRA 188 (P)  
BURRAMURRA 31

INOCULATIONS:  
\* 3 GERM BLOOD  
\* 7 IN 1  
\* VIBRIO

**SIRE: GLENALBYN PEGASUS**

GLEN OAKS JET LAG J164 (P)  
GLENALBYN MINOGUE 659  
GLENALBYN 448

WARENDA ELLIOTT  
TYNDALE 210 (P)  
TYNDALE 126

**DAM: CHILGERRIE HILL CLEO B129 (P)**

CHILGERRIE HILL UTAH (P)  
CHILGERRIE HILL B32  
CHILGERRIE HILL A901

Purchaser \_\_\_\_\_ \$ \_\_\_\_\_

WGT	DWG	EMA	FAT	SC

# Chilgerrie Hill B509 (P)

## 'S' Bull

23

IDENT NO: CHI22MB509

D.O.B: 23/03/22

AGE: 17 MONTHS

TATTOO: B509

VENDOR: AS & KJ MAYES

WACO CHEVRON H1305 (P)  
BURRAMURRA 188 (P)  
BURRAMURRA 31

INOCULATIONS:  
\* 3 GERM BLOOD  
\* 7 IN 1  
\* VIBRIO

**SIRE: GLENALBYN PEGASUS**

GLEN OAKS JET LAG J164 (P)  
GLENALBYN MINOGUE 659  
GLENALBYN 448

DIAMOND H GENERAL (P)  
DIAMOND H QUESTMAN  
DIAMOND H GYPSY

**DAM: CHILGERRIE HILL B380 (P)**

TYNDALE 210 (P)  
CHILGERRIE HILL CARLY B109  
CHILGERRIE HILL A914

Purchaser \_\_\_\_\_ \$ \_\_\_\_\_

WGT	DWG	EMA	FAT	SC

# Chilgerrie Hill B527 (P)

## 'S' Bull

24

IDENT NO: CHI22MB527

D.O.B: 30/03/22

AGE: 17 MONTHS

TATTOO: B527

VENDOR: AS & KJ MAYES

DIAMOND H GENERAL (P)  
DIAMOND H QUESTMAN  
DIAMOND H GYPSY

INOCULATIONS:  
\* 3 GERM BLOOD  
\* 7 IN 1  
\* VIBRIO

**SIRE: CHILGERRIE HILL 99J**

WAVE HILL YOKEL  
WAVE HILL G47  
WAVE HILL D611 (P)

WARILEE A27  
CHILGERRIE HILL CLARET J25  
CHILGERRIE HILL ZOEY J16

**DAM: CHILGERRIE HILL B345**

WARILEE A27  
CHILGERRIE HILL B245  
CHILGERRIE HILL B35

Purchaser \_\_\_\_\_ \$ \_\_\_\_\_

WGT	DWG	EMA	FAT	SC

# Chilgerrie Hill B516 (P)

## 'S' Bull

25

IDENT NO: CHI22MB516

D.O.B: 06/01/22

AGE: 21 MONTHS

TATTOO: B516

VENDOR: AS & KJ MAYES

DUNLOP KAISER (PS)  
GLEN OAKS LAMBERT L25 (P)  
GLEN OAKS B66 (P)

INOCULATIONS:  
\* 3 GERM BLOOD  
\* 7 IN 1  
\* VIBRIO

**SIRE: DIAMOND H VOLCANO**

WARENDA SCORPIO  
DIAMOND H M298  
DIAMOND H 1195

MULTIPLE  
MULTIPLE  
MULTIPLE

**DAM: CHILGERRIE HILL M30**

MULTIPLE  
CHILGERRIE HILL 2X  
MULTIPLE

Purchaser \_\_\_\_\_ \$ \_\_\_\_\_

WGT	DWG	EMA	FAT	SC



# Oakdale Sampson

## 'S' Bull

26



**IDENT NO:** OAK22M2156  
**TATTOO:** 2156

**D.O.B:** 16/09/21  
**VENDOR:** GM KROLL

**AGE:** 23 MONTHS

HARDIGREEN PARK OMEGA F16 (P)  
DANGARFIELD X-BOX (PS)  
DANGARFIELD 8488

**INOCULATIONS:**

- \* 3 GERM
- \* 7 IN 1
- \* VIBRIO

**SIRE: DANGARFIELD ANZAC A102 (ET)(AI)(P)**

MULTIPLE SIRE  
DANGARFIELD 0522 (P)  
MULTIPLE DAM

DIAMOND H LAWSON (P)  
YULGILBAR GLENVALE G098 (P)  
THE LAKES K224

**DAM: OAKDALE KATHLEEN**

CANOWINDRA 1548 (AI)  
OAKDALE ZIGGY  
BERTON ILLEURA B33

WE BELIEVE SAMPSON TO BE A STUD SIRE PROSPECT. HE HAS LENGTH, BONE & IS A VERY MATERNAL TYPE OF SIRE. HIS DAM IS ONE OF OUR BEST COWS WITH 4 OF HER HEIFERS RETAINED. SAMPSON IS HER ONLY SON TO DATE.

Purchaser \_\_\_\_\_ \$ \_\_\_\_\_

WGT	DWG	EMA	FAT	SC

# Oakdale Scholar

## 'S' Bull

27

**IDENT NO:** OAK21M2153

**D.O.B:** 28/02/21

**AGE:** 30 MONTHS

**TATTOO:** 2153

**VENDOR:** GM KROLL

DIAMOND H LAWSON (P)  
YULGILBAR GLENVALE G098 (P)  
THE LAKES K224

**INOCULATIONS:**

\* 3 GERM

\* 7 IN 1

\* VIBRIO

**SIRE: OAKDALE LONGBOW 980**

TALGAI CASTLEMAINE (P)  
OAKDALE IDOL 926 (PS)  
OAKDALE EVA

WOBURN DOWNS BACARDI (ET)  
OAKDALE TARZAN (ET)  
WOBURN DOWNS BELLE (ET)

**DAM: OAKDALE FLINT**

CUMBERLAND LAMBERT (PS)  
OAKDALE VERA  
MURRUMBO 1358/1

A YOUNG LONGBOW SON WHO IS THE IMAGE OF HIS SIRE. HIS DAM IS STILL IN THE STUD AGED 14. SHE IS A VERY WELL BRED COW.

Purchaser \_\_\_\_\_ \$ \_\_\_\_\_

WGT	DWG	EMA	FAT	SC

# Oakdale Solomon

## 'S' Bull

28

**IDENT NO:** OAK22M2172

**D.O.B:** 14/12/21

**AGE:** 21 MONTHS

**TATTOO:** 2172

**VENDOR:** GM KROLL

DANGARFIELD X-BOX (PS)  
DANGARFIELD ANZAC A102 (ET)(AI)(P)  
DANGARFIELD 0522 (P)

**INOCULATIONS:**

\* 3 GERM

\* 7 IN 1

\* VIBRIO

**SIRE: OAKDALE PHARAOH 2110**

TALGAI CASTLEMAINE (P)  
OAKDALE HOLLY  
OAKDALE CHARM

DIAMOND H LAWSON (P)  
YULGILBAR GLENVALE G098 (P)  
THE LAKES K224

**DAM: OAKDALE NICE 2062 (P)**

OAKDALE ZULU  
OAKDALE DELLA  
OAKDALE UNCOVER

SOLOMAN IS THE FIRST SON OF RETAINED SIRE PHANTOM. HE WAS RETAINED TO KEEP THE DANGARFIELD ANZAC LINE. HE IS THE SECOND CALF OF NICE, WHOSE FIRST CALF IS A RETAINED DAUGHTER. HER THIRD CALF IS A WEANER BULL.

Purchaser \_\_\_\_\_ \$ \_\_\_\_\_

WGT	DWG	EMA	FAT	SC

# Oakdale Steele

## 'S' Bull

29

**IDENT NO:** OAK21M2152

**D.O.B:** 28/02/21

**AGE:** 30 MONTHS

**TATTOO:** 2152

**VENDOR:** GM KROLL

DUNLOP NINJA (P)  
DUNLOP QUENTIN L134  
DUNLOP G533

**INOCULATIONS:**

- \* 3 GERM
- \* 7 IN 1
- \* VIBRIO

**SIRE: BULLAMAKINKA P186 (P)**

CANOWINDRA GOLD EDITION  
BULLAMAKINKA L99  
BULLAMAKINKA G49 (P)

KM BONANZA 298 (PS)  
CANOWINDRA NEBO N48  
CANOWINDRA H115

**DAM: OAKDALE NOVEMBER 2055 (P)**

YULGILBAR GLENVALE G098 (P)  
OAKDALE KATHLEEN  
OAKDALE ZIGGY

STEELE WAS THE CALF AT FOOT ON SHOW COW NOVEMBER. SHE HAD A VERY SUCCESSFUL SHOW CAREER. NOVEMBER IS OUT OF THE SAME COW AS OUR FIRST LOT SAMPSON.

Purchaser \_\_\_\_\_ \$ \_\_\_\_\_

WGT	DWG	EMA	FAT	SC

# Oakdale Squater

## 'S' Bull

30

**IDENT NO:** OAK21M2155

**D.O.B:** 08/05/21

**AGE:** 27 MONTHS

**TATTOO:** 2155

**VENDOR:** GM KROLL

DIAMOND H LAWSON (P)  
YULGILBAR GLENVALE G098 (P)  
THE LAKES K224

**INOCULATIONS:**

- \* 3 GERM
- \* 7 IN 1
- \* VIBRIO

**SIRE: OAKDALE LONGBOW 980**

TALGAI CASTLEMAINE (P)  
OAKDALE IDOL 926 (PS)  
OAKDALE EVA

WARRILLEE 389  
WARRILLEE VERNON  
WARRILLEE 543

**DAM: DANGARFIELD 8350**

MULTIPLE SIRE  
DANGARFIELD 8306

ANOTHER TOP SON OF LONGBOW. HIS FULL BROTHER SOLD TO THE ROCKYVIEW STUD. DANGARFIELD 8350 IS NOW 16 AND STILL IN THE STUD. SHE HAS A HEIFER AT FOOT ALSO BY LONGBOW.

Purchaser \_\_\_\_\_ \$ \_\_\_\_\_

WGT	DWG	EMA	FAT	SC

# Oakdale Salesman

## 'S' Bull

31

**IDENT NO:** OAK22M2159

**D.O.B:** 19/10/21

**AGE:** 22 MONTHS

**TATTOO:** 2159

**VENDOR:** GM KROLL

WARENDA CHARLTON (PS)  
WAVE HILL JAGER J14 (PS)  
WAVE HILL F53

**INOCULATIONS:**

\* 3 GERM

\* 7 IN 1

\* VIBRIO

**SIRE: NIOA NITRO N04 (P)**

STRATHMORE F262 (PS)  
TALGAI I29 (PP)  
TALGAI G85

YARRAWONGA ROMEO (P)  
WACO WRANGLER (P)  
WACO A291 (P)

**DAM: DIAMOND H SAIGE S204 (P)**

DIAMOND H GENERAL (P)  
DIAMOND H KANKA (AI)(P)  
DIAMOND H G194

DAM DIAMOND H SAGE IS STILL IN THE STUD. SHE IS A VERY FERTILE COW. A SON SOLD LAST YEAR FOR \$12,000.00.

Purchaser \_\_\_\_\_ \$ \_\_\_\_\_

WGT	DWG	EMA	FAT	SC

# Oakdale Sam

## 'S' Bull

32

**IDENT NO:** OAK22M2163

**D.O.B:** 21/10/21

**AGE:** 22 MONTHS

**TATTOO:** 2163

**VENDOR:** GM KROLL

WARENDA CHARLTON (PS)  
WAVE HILL JAGER J14 (PS)  
WAVE HILL F53

**INOCULATIONS:**

\* 3 GERM

\* 7 IN 1

\* VIBRIO

**SIRE: NIOA NITRO N04 (P)**

STRATHMORE F262 (PS)  
TALGAI I29 (PP)  
TALGAI G85

WARENDA CHARLTON (PS)  
WAVE HILL L11 (P)  
WAVE HILL E113

**DAM: OAKDALE ORCHID 2069 (P)**

TALGAI CASTLEMAINE (P)  
OAKDALE JASMINE 946 (P)  
OAKDALE DEBRA

SAM'S DAM IS A PROMISING YOUNG COW IN THE STUD. HE IS HER SECOND SON. SHE HAS JUST WEANED A FULL BROTHER TO SAM.

Purchaser \_\_\_\_\_ \$ \_\_\_\_\_

WGT	DWG	EMA	FAT	SC

# Oakdale Smuggler

## 'S' Bull

33

**IDENT NO:** OAK22M2176

**D.O.B:** 16/12/21

**AGE:** 20 MONTHS

**TATTOO:** 2176

**VENDOR:** GM KROLL

HARDIGREEN PARK OMEGA F16 (P)  
DANGARFIELD X-BOX (PS)  
DANGARFIELD 8488

**INOCULATIONS:**

\* 3 GERM

\* 7 IN 1

\* VIBRIO

**SIRE: DANGARFIELD ANZAC A102 (ET)(AI)(P)**

MULTIPLE SIRE

DANGARFIELD 0522 (P)

MULTIPLE DAM

WARENDA DENVER (P)

WARENDA HORTON H32 (P)

WARENDA N41 (P)

**DAM: OAKDALE LOVELY 998 (P)**

YARRAWONGA PASADENA (P)

OAKDALE ELOPER

OAKDALE ANTONIA

SMUGGLER IS A SON OF DANGARFIELD ANZAC. HIS DAM IS A VERY SOFT SKINNED COW & IS A VALUED COW IN THE HERD.

Purchaser \_\_\_\_\_ \$ \_\_\_\_\_

WGT	DWG	EMA	FAT	SC

# Oakdale Squire

## 'S' Bull

34

**IDENT NO:** OAK22M2179

**D.O.B:** 19/12/21

**AGE:** 20 MONTHS

**TATTOO:** 2179

**VENDOR:** GM KROLL

WARENDA CHARLTON (PS)  
WAVE HILL JAGER J14 (PS)  
WAVE HILL F53

**INOCULATIONS:**

\* 3 GERM

\* 7 IN 1

\* VIBRIO

**SIRE: NIOA NITRO N04 (P)**

STRATHMORE F262 (PS)

TALGAI I29 (PP)

TALGAI G85

OAKDALE WHISKEY

TALGAI CASTLEMAINE (P)

ROBENLEA W107

**DAM: OAKDALE GOVERNESS 2ND 854 (P)**

OAKDALE TARZAN (ET)

OAKDALE BROOKE

OAKDALE LEILA

SQUIRE'S DAM IS A CASTLEMAINE DAUGHTER. HIS DAUGHTERS ARE VERY FERTILE & FUNCTIONAL COWS. WE RECOMMEND AS A SUITABLE BULL FOR HEIFERS AS CASTLEMAINE DAUGHTERS HAVE EXTREMELY SMALL CALVES.

Purchaser \_\_\_\_\_ \$ \_\_\_\_\_

WGT	DWG	EMA	FAT	SC

# Oakdale Senator

## 'S' Bull

### 35

**IDENT NO:** OAK22M2182

**D.O.B:** 15/12/21

**AGE:** 20 MONTHS

**TATTOO:** 2182

**VENDOR:** GM KROLL

WARENDA CHARLTON (PS)  
WAVE HILL JAGER J14 (PS)  
WAVE HILL F53

**INOCULATIONS:**

\* 3 GERM

\* 7 IN 1

\* VIBRIO

**SIRE: NIOA NITRO N04 (P)**

STRATHMORE F262 (PS)

TALGAI I29 (PP)

TALGAI G85

WARENDA DENVER (P)

WARENDA HORTON H32 (P)

WARENDA N41 (P)

**DAM: OAKDALE LUMPY 1006 (P)**

WARRILLEE VERNON

DANGARFIELD 8350

DANGARFIELD 8306

DAM HAS CALVED EVERY YEAR SO FAR WHICH WE EXPECT OF ALL OUR COWS. SHE HAS JUST WEANED ANOTHER CALF THIS YEAR.

Purchaser \_\_\_\_\_ \$ \_\_\_\_\_

WGT	DWG	EMA	FAT	SC

# Glenn Oaks S116

## 'S' Bull

### 36

**IDENT NO:** GLO21MS116

**D.O.B:** 10/04/21

**AGE:** 28 MONTHS

**TATTOO:** S116

**VENDOR:** MI FERGUSON

DIAMOND H LEGEND (P)  
GLENN OAKS JUMBO BWANA J26 (P)  
GLENN OAKS B53

**INOCULATIONS:**

\* 3 GERM

\* 3 DAY

\* 7 IN 1

\* VIBRIO

**SIRE: YARRABEE GUNYAH 1377 (P)**

SUJO FLASH

YARRABEE DANBUE 6135

YARRABEE XORAH 5867

MULTIPLE SIRE

WACO H1304

MULTIPLE DAM

**DAM: GLENN OAKS N120**

WACO ATTORNEY F678

GLENN OAKS L82

GLENN OAKS JAM DROP J160 (P)

DNA SIRE VERIFIED

Purchaser \_\_\_\_\_ \$ \_\_\_\_\_

WGT	DWG	EMA	FAT	SC

# Wave Hill S170

## 'S' Bull

37

IDENT NO: WAV21MS170

D.O.B: 10/04/21

AGE: 28 MONTHS

TATTOO: S170

VENDOR: MI FERGUSON

YARRAWONGA SENATOR  
YARRAWONGA F126  
YARRAWONGA B593 (P)

INOCULATIONS:

\* 3 GERM

\* 3 DAY

\* 7 IN 1

\* VIBRIO

**SIRE: WACO L596**

MULTIPLE DAM

YARRAWONGA VALID  
GLENN OAKS FLEETWOOD F27 (PS)  
GLENN OAKS C63 (P)

**DAM: WAVE HILL K86 (P)**

WAVE HILL ARNIE

WAVE HILL D733 (P)

WAVE HILL Z107 (AI)

Purchaser \_\_\_\_\_ \$ \_\_\_\_\_

WGT	DWG	EMA	FAT	SC

# Wave Hill S822

## 'S' Bull

38

IDENT NO: WAV21MS822

D.O.B: 25/06/21

AGE: 26 MONTHS

TATTOO: S822

VENDOR: MI FERGUSON

WAVE HILL XTRA (P)  
WAVE HILL DRAKE  
WAVE HILL V92

INOCULATIONS:

\* 3 GERM

\* 3 DAY

\* 7 IN 1

\* VIBRIO

**SIRE: DUNLOP TOMAHAWK P1070**

MULTIPLE SIRE

DUNLOP G533

WAVE HILL MATLOCK (PS)  
WAVE HILL ARNIE  
WAVE HILL M137

**DAM: WAVE HILL F53**

WAVE HILL MATLOCK (PS)

WAVE HILL X122 (P)

WAVE HILL L89

Purchaser \_\_\_\_\_ \$ \_\_\_\_\_

WGT	DWG	EMA	FAT	SC



## *Roma Explorers Inn and Restaurant*

*The perfect place to stay for both the  
corporate and personal traveller.*

*With modern, spacious rooms, free  
wi-fi, undercover parking, truck  
parking and onsite dining in our  
award-winning Explorers  
Restaurant, we'll make your  
stay memorable.*

*Phone: (07) 4620 1400*

*Email: [admin@romaexplorersinn.com.au](mailto:admin@romaexplorersinn.com.au)*

*44778 Warrego Hwy, Roma*





# PJH LIVESTOCK & PROPERTY ROMA



**CONTACT US FOR ALL YOUR  
LIVESTOCK & PROPERTY NEEDS**

**Steven Goodhew**

☎ 0428 305 810

**David Friend**

☎ 0477 511 296



☎ 07 4622 2622

✉ [admin@pjhlivestock.com.au](mailto:admin@pjhlivestock.com.au)

📘 [pjhlivestock](#)

🌐 [www.pjhlivestock.com.au](http://www.pjhlivestock.com.au)

116 McDowall St, Roma 4455 PO BOX 1107

# Glenn Oaks T300 (PP)

## 'S' Bull

39

**IDENT NO:** GLO22MT300

**D.O.B:** 26/08/21

**AGE:** 24 MONTHS

**TATTOO:** T300

**VENDOR:** MI FERGUSON

WARENDA CHARLTON (PS)  
WARENDA KINGSTON K14 (P)  
WARENDA E69 (P)

**INOCULATIONS:**

\* 3 GERM

\* 3 DAY

\* 7 IN 1

\* VIBRIO

**SIRE: GLENALBYN NOBLE N687 (P)**

GLENN OAKS JETLAG J164 (P)

GLENALBYN 615 (P)

GLENALBYN 502

WAVE HILL U14 (P)

GLENALBYN 502

WAVE HILL V22 (AI)

**DAM: WAVE HILL E34**

WAVE HILL XTRA (P)

WAVE HILL B69 (P)

WAVE HILL KATE

DNA SIRE VERIFIED

Purchaser \_\_\_\_\_ \$ \_\_\_\_\_

WGT	DWG	EMA	FAT	SC

# Wave Hill S112 (PS)

## 'S' Bull

40

**IDENT NO:** WAV22MS112

**D.O.B:** 16/08/21

**AGE:** 24 MONTHS

**TATTOO:** S112

**VENDOR:** MI FERGUSON

DIAMOND H LEGEND (P)  
GLENN OAKS JUMBO BWANA J26 (P)  
GLENN OAKS B53

**INOCULATIONS:**

\* 3 GERM

\* 3 DAY

\* 7 IN 1

\* VIBRIO

**SIRE: YARRABEE GUNYAH 1377 (P)**

SUJO FLASH

YARRABEE DANBUE 6135

YARRABEE XORAH 5867

WARENDA REQUIRE (PS)

WARENDA CHARLTON (PS)

WARENDA R121

**DAM: WAVE HILL J11**

ROSEVALE ZEST Z32 (AI)(PS)

WAVE HILL F33

WAVE HILL Z112 (P)

DNA SIRE VERIFIED

Purchaser \_\_\_\_\_ \$ \_\_\_\_\_

WGT	DWG	EMA	FAT	SC

# Glenview T32 (AI)

## 'S' Bull

41

IDENT NO: GLV22MT32

D.O.B: 01/10/21

AGE: 23 MONTHS

TATTOO: T32

VENDOR: MI FERGUSON

WARENDA REQUIRE (PS)  
WARENDA CHARLTON (PS)  
WARENDA R121

INOCULATIONS:

\* 3 GERM

\* 3 DAY

\* 7 IN 1

\* VIBRIO

**SIRE: WARENDA KILIMANJARO K4 (P)**

WAVE HILL ARNIE  
WARENDA E71 (P)  
WARENDA S113 (P)

MULTIPLE SIRE  
WACO H1304

**DAM: GLENVIEW P107**

MULTIPLE DAM  
YARRAWONGA SIR  
GLENVIEW E134  
GLENVIEW Y60

Purchaser \_\_\_\_\_ \$ \_\_\_\_\_

WGT	DWG	EMA	FAT	SC

# Glenn Oaks T22 (P)

## 'S' Bull

42

IDENT NO: GLO22MT22

D.O.B: 26/10/21

AGE: 22 MONTHS

TATTOO: T22

VENDOR: MI FERGUSON

YARRAWONGA VERSATILE (PS)  
WACO DIEGO J258 (PS)  
WACO E377 (P)

INOCULATIONS:

\* 3 GERM

\* 3 DAY

\* 7 IN 1

\* VIBRIO

**SIRE: WACO MURDOCK M188**

MULTIPLE SIRE  
WACO H113  
WACO E271

OAKDALE ACORN 536  
DUNLOP KAISER (PS)K4:R4  
DUNLOP SX732

**DAM: GLENN OAKS JAM DROP J160 (P)**

WACO LANDLORD (P)  
YARRAWONGA Y565 (P)  
YARRAWONGA G351 (P)

DNA SIRE VERIFIED

Purchaser \_\_\_\_\_ \$ \_\_\_\_\_

WGT	DWG	EMA	FAT	SC

# Glenn Oaks T562

## 'S' Bull

43

**IDENT NO:** GLO22MT562  
**TATTOO:** T562

**D.O.B:** 18/11/21  
**VENDOR:** MI FERGUSON

**AGE:** 21 MONTHS

WACO JACK (P)  
DANGARFIELD JACK JUNIOR (P)  
DANGARFIELD 3107 (P)

**INOCULATIONS:**  
\* 3 GERM  
\* 3 DAY  
\* 7 IN 1  
\* VIBRIO

**SIRE: YARRAWONGA JACKPOT Q238 (IVF)(AI)(P)**  
WACO ZEUS  
YARRAWONGA K151  
YARRAWONGA B61 (P)

MULTIPLE SIRE

**DAM: GLENN OAKS K196**

MULTIPLE DAM

DNA PARENT VERIFIED

Purchaser \_\_\_\_\_ \$ \_\_\_\_\_

WGT	DWG	EMA	FAT	SC

# Glenview T1148 (P)

## 'S' Bull

44

**IDENT NO:** GLV22MT1148  
**TATTOO:** T1148

**D.O.B:** 23/12/21  
**VENDOR:** MI FERGUSON

**AGE:** 20 MONTHS

YARRAWONGA CORVETTE H730 (P)  
YARRAWONGA M502  
YARRAWONGA F471

**INOCULATIONS:**  
\* 3 GERM  
\* 3 DAY  
\* 7 IN 1  
\* VIBRIO

**SIRE: YARRAWONGA JAMBOREE Q812 (P)**  
YARRAWONGA ACE G240 (P)  
YARRAWONGA K51 (P)  
YARRAWONGA D717 (P)

MULTIPLE SIRE

**DAM: GLENVIEW L69**

MULTIPLE DAM

Purchaser \_\_\_\_\_ \$ \_\_\_\_\_

WGT	DWG	EMA	FAT	SC

# Glenn Oaks T1156

## 'S' Bull

45

**IDENT NO:** GLO22MT1156

**D.O.B:** 18/12/21

**AGE:** 20 MONTHS

**TATTOO:** T1156

**VENDOR:** MI FERGUSON

YARRAWONGA CORVETTE H730 (P)  
YARRAWONGA M502  
YARRAWONGA F471

**INOCULATIONS:**

\* 3 GERM

\* 3 DAY

\* 7 IN 1

\* VIBRIO

**SIRE: YARRAWONGA JAMBOREE Q812 (P)**

YARRAWONGA ACE G240 (P)

YARRAWONGA K51 (P)

YARRAWONGA D717 (P)

WACO SAMSON

YARRAWONGA ARCHER G280

YARRAWONGA A21 (ET)(PS)

**DAM: GLENN OAKS L63**

YARRAWONGA KILT

YARRAWONGA Y529

YARRAWONGA U689

Purchaser \_\_\_\_\_ \$ \_\_\_\_\_

WGT	DWG	EMA	FAT	SC

# Spring Creek Tobias T586 (P)

## 'S' Bull

46

**IDENT NO:** T586

**D.O.B:** 23/08/21

**AGE:** 24 MONTHS

**TATTOO:** T586

**VENDOR:** AJ & AM DOERING

CANOWINDRA GOLD EDITION  
BULLAMAKINKA GLADIATOR G52  
WARENDA S207

**INOCULATIONS:**

\* 3 GERM

\* 3 DAY

\* 7 IN 1

\* VIBRIO

**SIRE: SPRING CREEK NEPTUNE N414 (PS)**

CANOWINDRA CAESAR

SPRING CREEK ELEANOR E17

SPRING CREEK OLYMPIA 531

MULTIPLE

YULGILBAR L246

MULTIPLE

**DAM: SPRING CREEK P771 (P)**

CANOWINDRA CAESAR

SPRING CREEK HAYLEY H545

NEWTON BOYD 1553

Purchaser \_\_\_\_\_ \$ \_\_\_\_\_

WGT	DWG	EMA	FAT	SC

# Spring Creek Tennyson T614(P)

## 'S' Bull

47

IDENT NO: T614

D.O.B: 27/08/21

AGE: 24 MONTHS

TATTOO: T614

VENDOR: AJ & AM DOERING

WAVE HILL ARNIE

WAVE HILL G52 (P)

WAVE HILL W91

**SIRE: WARRILLEE N19 (P)**

GYRANDA ZURICH

WARRILLEE B87

WARRILLEE 729

BULLAMAKINKA H82 (PS)

BENELKAY KALAHARI K120

BENELKAY F155 (P)

**DAM: SPRING CREEK PAISLEY P631 (P)**

JARRAH PARK FARAWAY F12

SPRING CREEK JASMINE J635 (P)

SPRING CREEK ELIZABETH E51

INOCULATIONS:

\* 3 GERM

\* 3 DAY

\* 7 IN 1

\* VIBRIO

Purchaser \_\_\_\_\_ \$ \_\_\_\_\_

WGT	DWG	EMA	FAT	SC

# Spring Creek Theodore T606 (P)

## 'S' Bull

48

IDENT NO: T606

D.O.B: 26/08/21

AGE: 24 MONTHS

TATTOO: T606

VENDOR: AJ & AM DOERING

WAVE HILL ARNIE

WAVE HILL G52 (P)

WAVE HILL W91

**SIRE: WARRILLEE N19 (P)**

GYRANDA ZURICH

WARRILLEE B87

WARRILLEE 729

ABERDEEN S34 (P)

ABERDEEN V15 (P)

ABERDEEN R21 (P)

**DAM: SPRING CREEK PRIMROSE P781**

HILLSIDE LEDGER 1032 (P)

SPRING CREEK K905 (P)

SPRING CREEK G319

INOCULATIONS:

\* 3 GERM

\* 3 DAY

\* 7 IN 1

\* VIBRIO

Purchaser \_\_\_\_\_ \$ \_\_\_\_\_

WGT	DWG	EMA	FAT	SC

# Spring Creek Tyson T608

## 'S' Bull

49

**IDENT NO:** T608

**D.O.B:** 14/09/21

**AGE:** 23 MONTHS

**TATTOO:** T608

**VENDOR:** AJ & AM DOERING

WAVE HILL ARNIE

WAVE HILL G52 (P)

WAVE HILL W91

**SIRE: WARRILLEE N19 (P)**

GYRANDA ZURICH

WARRILLEE B87

WARRILLEE 729

BULLAMAKINKA H82 (PS)

BENELKAY KALAHARI K120

BENELKAY F155 (P)

**DAM: SPRING CREEK PIPER P605**

YARAWONGA SCORCHER

SPRING CREEK HILDA H405

SPRING CREEK DAKOTA D43

**INOCULATIONS:**

\* 3 GERM

\* 3 DAY

\* 7 IN 1

\* VIBRIO

Purchaser \_\_\_\_\_ \$ \_\_\_\_\_

WGT	DWG	EMA	FAT	SC

# Whitalby Tattum (P)

## 'S' Bull

50

**IDENT NO:** WHI22M1448

**D.O.B:** 15/12/22

**AGE:** 20 MONTHS

**TATTOO:** 1448

**VENDOR:** CS & RJ DRYNAN

WACO LANDLORD (P)

SUJO FIRST CLASS (AI) (P)

SUJO BUTTERCUP (P)

**SIRE: STRATHMORE MAXWELL M376 (AI) (P)**

MULTIPLE SIRE

STRATHMORE J983 (P)

MULTIPLE DAM

**INOCULATIONS:**

\* 3 GERM

\* 7 IN 1

\* VIBRIO

MULTIPLE SIRE

**DAM: WHITALBY F106**

MULTIPLE DAM

Purchaser \_\_\_\_\_ \$ \_\_\_\_\_

WGT	DWG	EMA	FAT	SC

# Whitalby Tetris

## 'S' Bull

51

IDENT NO: WHI22M1446

D.O.B: 20/01/22

AGE: 19 MONTHS

TATTOO: 1446

VENDOR: CS & RJ DRYNAN

WACO LANDLORD (P)  
SUJO FIRST CLASS (AI) (P)  
SUJO BUTTERCUP (P)

INOCULATIONS:

\* 3 GERM

\* 7 IN 1

\* VIBRIO

**SIRE: STRATHMORE MAXWELL M376 (AI) (P)**

MULTIPLE SIRE  
STRATHMORE J983 (P)  
MULTIPLE DAM

MULTIPLE SIRE

**DAM: WHITALBY F100**

MULTIPLE DAM

Purchaser \_\_\_\_\_ \$ \_\_\_\_\_

WGT	DWG	EMA	FAT	SC

# Murgo Trench

## 'S' Bull

52

IDENT NO: MUR22M287

D.O.B: 27/10/21

AGE: 20 MONTHS

TATTOO: 287

VENDOR: PJ & KN TIMMINS

DANGARFIELD TYCOON [P]  
GREENUP LEICESTER L76  
DANGARFIELD 0131

INOCULATIONS:

\* 3 GERM

\* 3 DAY

\* 7 IN 1

\* VIBRIO

**SIRE: DANGARFIELD CARBINE [P]**

DANGARFIELD 3537  
DANGARFIELD 1621 [P]  
DANGARFIELD ELEGANCE

MURGO MULTIPLE

**DAM: MURGO 129**

MURGO MULTIPLE

Purchaser \_\_\_\_\_ \$ \_\_\_\_\_

WGT	DWG	EMA	FAT	SC



# Murgo Tamworth

## 'S' Bull

53

IDENT NO: MUR22M277

D.O.B: 20/09/21

AGE: 21 MONTHS

TATTOO: 277

VENDOR: PJ & KN TIMMINS

DANGARFIELD TYCOON [P]  
GREENUP LEICESTER L76  
DANGARFIELD 0131

INOCULATIONS:

\* 3 GERM

\* 3 DAY

\* 7 IN 1

\* VIBRIO

**SIRE: DANGARFIELD CARBINE [P]**

DANGARFIELD 3537  
DANGARFIELD 1621 [P]  
DANGARFIELD ELEGANCE

HAY11M464

**DAM: MURGO 64**

MURGO 620  
MURGO 885  
MURGO 428

Purchaser \_\_\_\_\_ \$ \_\_\_\_\_

WGT	DWG	EMA	FAT	SC

# Win 1 TONNE OF

# RIVERINA

**PURCHASE A BULL  
FOR YOUR CHANCE TO WIN  
1 TONNE OF RIVERINA PRODUCT  
OF YOUR CHOICE.**

\* EVERY BULL PURCHASED EQUALS 1 ENTRY \*  
DRAW TO BE CONDUCTED AT CONCLUSION  
OF 2023 HEARTLAND SALE

# Rocky View Samson S4 (P)

54

## 'S' Bull

**IDENT NO:** RKV22MS4

**D.O.B:** 23/01/22

**AGE:** 20 MONTHS

**TATTOO:** S4

**VENDOR:** ROCKYVIEW SANTAS

TYNDALE NODDY (AI)(P)  
ROSEVALE ZEST Z32 (AI)(PS)  
ROSEVALE PATRICIA W275 (P)

**INOCULATIONS:**

\* 3 GERM

\* 3 DAY

\* 7 IN 1

\* VIBRIO

**SIRE: OAKDALE GAFFA (P) 856**

WARENDA MEXICO (A1) (P)

WAVE HILL B11(AI)(P)

WAVE HILL Y33

DANGERFIELD U2 U031 (P)

DUNLOP PALATABLE J298 (P)

DUNLOP E597

**DAM: TALGAI NOVA (P)**

TALGAI GOLD G58 (AI)

TALGAI K87

DOONDI G19

Purchaser \_\_\_\_\_ \$ \_\_\_\_\_

WGT	DWG	EMA	FAT	SC

# Rocky View Summit S8 (P)

55

## 'S' Bull

**IDENT NO:** RKV22MS8

**D.O.B:** 15/01/22

**AGE:** 20 MONTHS

**TATTOO:** S8

**VENDOR:** ROCKYVIEW SANTAS

TYNDALE NODDY (AI)(P)  
ROSEVALE ZEST Z32 (AI)(PS)  
ROSEVALE PATRICIA W275 (P)

**INOCULATIONS:**

\* 3 GERM

\* 3 DAY

\* 7 IN 1

\* VIBRIO

**SIRE: OAKDALE GAFFA (P) 856**

WARENDA MEXICO (AI)(P)

WAVE HILL B11(AI)(P)

WAVE HILL Y33

TYNDALE EARTHQUAKE (P)

TALGAI HURRICANE H126 (P)

TALGAI EBONY

**DAM: TALGAI KINDA (P)**

DANGARFIELD QUARTERBACK (P)

TALGAI I5 (AI)(P)

TALGAI B3

KINDA HAS A DAUGHTER RETAINED IN THE STUD HERD, AND A SON SOLD AT LAST YEAR'S SALE FOR \$14,000 TO MR BARRY CRONIN .

Purchaser \_\_\_\_\_ \$ \_\_\_\_\_

WGT	DWG	EMA	FAT	SC

# Rocky View Sir Walter S16 (P)

56

'S' Bull

IDENT NO: RKV22MS16  
TATTOO: S16

D.O.B: 17/01/22  
VENDOR: ROCKYVIEW SANTAS

AGE: 20 MONTHS

TYNDALE NODDY (AI)(P)  
ROSEVALE ZEST Z32 (AI)(PS)  
ROSEVALE PATRICIA W275 (P)

INOCULATIONS:  
\* 3 GERM  
\* 3 DAY  
\* 7 IN 1  
\* VIBRIO

**SIRE: OAKDALE GAFFA (P) 856**  
WARENDA MEXICO (A1) (P)  
WAVE HILL B11(AI)(P)  
WAVE HILL Y33

**DAM: TALGAI KIRRA (P)**  
OAKDALE YEOMAN  
TALGAI I33  
DOONDI D6

Purchaser \_\_\_\_\_ \$ \_\_\_\_\_

WGT	DWG	EMA	FAT	SC

# Rocky View Santa S10 (P) (AI)

57

'S' Bull

IDENT NO: RKV22MS10  
TATTOO: S10

D.O.B: 23/11/21  
VENDOR: ROCKYVIEW SANTAS

AGE: 22 MONTHS

OAKDALE TARZAN (ET)  
OAKDALE WHISKEY  
OAKDALE ROBINA (P)

INOCULATIONS:  
\* 3 GERM  
\* 3 DAY  
\* 7 IN 1  
\* VIBRIO

**SIRE: TALGAI CASTLEMAINE (P)**  
ROBENLEA ZULU (ET)  
ROBENLEA W107  
GOONOO U198 (P)

**DAM: TALGAI NIVA (P)**  
STRATHMORE MULTI  
STRATHMORE F262 (PS)  
STRATHMORE C303 (P)  
FISHINGTON WILTON (P)  
KELY WALLAH Z49  
KELLY WALLAH X25 (P)

Purchaser \_\_\_\_\_ \$ \_\_\_\_\_

WGT	DWG	EMA	FAT	SC

# Satelite Quantum Q7 (P)

## 'S' Bull

58



**IDENT NO:** SAT21MQ7  
**TATTOO:** Q7  
**GERTRUDIS**

**D.O.B:** 01/05/21

**AGE:** 28 MONTHS

**VENDOR:** BEEFWOOD SANTA

DUNDEE ULLYSSES (P)

DUNDEE BATTALION

SANTALANDS E17

**SIRE: DUNDEE 146 (P)**

DUNDEE ULLYSSES (P)

DUNDEE 986

DUNDEE 380

ROSEVALE BULLION F410

ROSGAR JASPER J46 (P)

ROSGAR EXPO E16 (P)

**DAM: SATELITE NAUGHTY AND NICE N5 (P)**

GLENN OAKS HARRY HARRY SI SI H24

SATELITE KIT KAT K9

WAVE HILL B113

**INOCULATIONS:**

\* 3 GERM

\* 3 DAY

\* 7 IN 1

\* VIBRIO

AN EXCEPTIONALLY QUIET POLLED DUNDEE 146 (P) SON. OOZES SIRE APPEAL WITH DEPTH AND THICKNESS THROUGHOUT. SMOOTH THROUGH THE SHOULDERS AND TOPLINE. EXHIBITED SUCCESSFULLY DURING 2023; RESERVE SENIOR CHAMPION TROPICAL BULL AT WARWICK SHOW, SENIOR CHAMPION BOS INDICUS BULL AT WALLUMBILLA SHOW. WILL ALSO BE EXHIBITED AT 2023 BRISBANE EKK. WILL BE POLL GENE TESTED PRIOR TO THE SALE.

Purchaser \_\_\_\_\_ \$ \_\_\_\_\_

WGT	DWG	EMA	FAT	SC

# Beefwood Ready To Rumble R3

## 'S' Bull

59



IDENT NO: BEE22MR3  
 TATTOO: R3  
 GERTRUDIS

D.O.B: 12/08/21  
 VENDOR: BEEFWOOD SANTA

AGE: 24 MONTHS

DUNDEE ULLYSSES (P)

DUNDEE BATTALION

SANTALANDS E17

**SIRE: DUNDEE 146 (P)**

DUNDEE ULLYSSES (P)

DUNDEE 986

DUNDEE 380

DANGARFIELD SECOND-TO-NONE

GLENN OAKS HARRY HARRY SI SI H24

GLENN OAKS V45

**DAM: SATELITE KIT KAT K9**

WAVE HILL XTRA (P)

WAVE HILL B113

UNKNOWN

INOCULATIONS:

\* 3 GERM

\* 3 DAY

\* 7 IN 1

\* VIBRIO

A DARK WELL BODIED HORNED BULL THAT STANDS ON GOOD BONE. THIS IS A YOUNG SIRE THAT WILL PUT SOME PUNCH INTO HIS PROGENY.

Purchaser \_\_\_\_\_ \$ \_\_\_\_\_

WGT	DWG	EMA	FAT	SC

# Jazmaree Sir Gary (PS)

'S' Bull

60



IDENT NO: JAZ22MS171  
TATTOO: S171

D.O.B: 28/06/21

AGE: 26 MONTHS

VENDOR: JAZMAREE SANTAS

INOCULATIONS:

- \* 3 GERM
- \* 3 DAY
- \* 7 IN 1
- \* VIBRIO

SIRE: MULTIPLE SIRE

DAM: JAZMAREE 1193

Purchaser \_\_\_\_\_ \$ \_\_\_\_\_

WGT	DWG	EMA	FAT	SC

# Jazmaree Thor (P)

## 'S' Bull

61



**IDENT NO:** JAZ22MT293  
**TATTOO:** T293

**D.O.B:** 20/10/21  
**VENDOR:** JAZMAREE SANTAS

**AGE:** 23 MONTHS

WACO YALE

YARRAWONGA FORMIDABLE L872

YARRAWONGA G143

**SIRE: HARDIGREEN PARK WOW P20**

DRENSMAIN APEX 238

HARDIGREEN PARK L25

HARDIGREEN PARK F63

**INOCULATIONS:**

\* 3 GERM

\* 3 DAY

\* 7 IN 1

\* VIBRIO

**DAM: RIVERSLEA L514**

Purchaser \_\_\_\_\_ \$ \_\_\_\_\_

WGT	DWG	EMA	FAT	SC

# Jazmaree Titan (P)

## 'S' Bull

62



IDENT NO: JAZ22MT297

D.O.B: 01/09/21

AGE: 24 MONTHS

TATTOO: T297

VENDOR: JAZMAREE SANTAS

YARRAWONGA MATRIX

WACO YARRABIN

WACO V159

**SIRE: CARDONA OTTOMAN**

GILLESPIE X78

CARDONA MONIQUE H164

CARDONA MONIQUE

TYNDALE NODDY

ROSEVALE NODDY

ROSEVALE SCHITZEL W459

**DAM: ROSGAR FANCY F28**

CANOWINDRA SIR JOH

ROSGAR YARDSTICK

ROGAR FLAVELL

INOCULATIONS:

\* 3 GERM

\* 3 DAY

\* 7 IN 1

\* VIBRIO

Purchaser \_\_\_\_\_ \$ \_\_\_\_\_

WGT	DWG	EMA	FAT	SC



# Jazmaree Tomahawk (P)

## 'S' Bull

63



IDENT NO: JAZ22MT287  
TATTOO: T287

D.O.B: 01/11/21  
VENDOR: JAZMAREE SANTAS

AGE: 22 MONTHS

WACO YALE

YARRAWONGA FORMIDABLE L872

YARRAWONGA G143

**SIRE: HARDIGREEN PARK WOW P20**

DRENSMAIN APEX 238

HARDIGREEN PARK L25

HARDIGREEN PARK F63

INOCULATIONS:

\* 3 GERM

\* 3 DAY

\* 7 IN 1

\* VIBRIO

**DAM: MULTIPLE DAM**

Purchaser \_\_\_\_\_ \$ \_\_\_\_\_

WGT	DWG	EMA	FAT	SC

# FREE FREIGHT\*

## available to:

- Longreach
- Toowoomba
- Charleville
- Emerald
- Taroom
- St George
- Injune
- Beaudesert

\*conditions apply

### Oakdale Smithfield

### 'S' Bull

64

**IDENT NO:** OAK22M2180

**D.O.B:** 20/12/21

**AGE:** 20 MONTHS

**TATTOO:** 2180

**VENDOR:** GM KROLL

DIAMOND H LAWSON (P)  
YULGILBAR GLENVALE G098 (P)  
THE LAKES K224

**INOCULATIONS:**

\* 3 GERM

\* 7 IN 1

\* VIBRIO

**SIRE: OAKDALE LONGBOW 980**

TALGAI CASTLEMAINE (P)  
OAKDALE IDOL 926 (PS)  
OAKDALE EVA

OAKDALE TARZAN (ET)  
OAKDALE ZULU  
OAKDALE LEILA

**DAM: OAKDALE ETNA (P)**

WAVE HILL JUST RIGHT (P)  
CALGA WEST NETTIE 72 (P)  
CALGA WEST NETTIE 30

POLLED SON OF LONGBOW. HIS DAM IS A VERY GOOD POLLED DAUGHTER OF OAKDALE ZULU. THE ZULU COWS HAVE BEEN OUR BEST COWS FOR MANY YEARS. ETNA IS NOW 15 YEARS OLD & STILL IN THE STUD.

Purchaser \_\_\_\_\_ \$ \_\_\_\_\_

WGT	DWG	EMA	FAT	SC

# Oakdale Titan

## 'S' Bull

65

**IDENT NO:** OAK22M2186

**D.O.B:** 28/01/22

**AGE:** 19 MONTHS

**TATTOO:** 2186

**VENDOR:** GM KROLL

DIAMOND H LAWSON (P)  
YULGILBAR GLENVALE G098 (P)  
THE LAKES K224

**INOCULATIONS:**

\* 3 GERM

\* 7 IN 1

\* VIBRIO

**SIRE: OAKDALE LONGBOW 980**

TALGAI CASTLEMAINE (P)  
OAKDALE IDOL 926 (PS)  
OAKDALE EVA

WARENDA DENVER (P)  
WARENDA HORTON H32 (P)  
WARENDA N41 (P)

**DAM: OAKDALE MISTY 1010 (P)**

OAKDALE ZOOM 482  
OAKDALE COUNTESS  
OAKDALE YVONNE

TITAN IS THE BABY OF OUR DRAFT THIS YEAR. BY LONGBOW OUT OF ONE OF OUR BEST YOUNG COWS. SHE HAS A VERY PROMISING FULL SISTER TO TITAN READY TO WEAN.

Purchaser \_\_\_\_\_ \$ \_\_\_\_\_

WGT	DWG	EMA	FAT	SC

# Oakdale Satalite

## 'S' Bull

66

**IDENT NO:** OAK22M2173

**D.O.B:** 14/12/21

**AGE:** 20 MONTHS

**TATTOO:** 2173

**VENDOR:** GM KROLL

HARDIGREEN PARK OMEGA F16 (P)  
DANGARFIELD X-BOX (PS)  
DANGARFIELD 8488

**INOCULATIONS:**

\* 3 GERM

\* 7 IN 1

\* VIBRIO

**SIRE: DANGARFIELD ANZAC A102 (ET)(AI)(P)**

MULTIPLE SIRE  
DANGARFIELD 0522 (P)  
MULTIPLE DAM

DIAMOND H LAWSON (P)  
YULGILBAR GLENVALE G098 (P)  
THE LAKES K224

**DAM: OAKDALE OPAL 2083**

OAKDALE ZULU  
OAKDALE DEBRA  
OAKDALE URSUA

SATALITE IS ANOTHER ANZAC SON. HIS DAM WAS REARED AS A PODDY. SHE WAS OUT OF OUR BEST OLD ZULU COW & IS ONE OF FOUR SISTERS RETAINED OUT OF THIS COW.

Purchaser \_\_\_\_\_ \$ \_\_\_\_\_

WGT	DWG	EMA	FAT	SC

# Glenn Oaks T718 (PS)

## 'S' Bull

67

IDENT NO: GLO22MT718

D.O.B: 01/11/21

AGE: 22 MONTHS

TATTOO: T718

VENDOR: MI FERGUSON

INOCULATIONS:

\* 3 GERM

\* 3 DAY

\* 7 IN 1

\* VIBRIO

**SIRE: MULTIPLE SIRE**

MULTIPLE SIRE

WACO ATTORNEY F678

MULTIPLE DAM

**DAM: GLENN OAKS L82**

DUNLOP KAISER (PS)

GLENN OAKS JAM DROP J160 (P)

YARRAWONGA Y565 (P)

DNA DAM VERIFIED

Purchaser \_\_\_\_\_ \$ \_\_\_\_\_

WGT	DWG	EMA	FAT	SC

# Glenview T72 (P)

## 'S' Bull

68

IDENT NO: GLV22MT72

D.O.B: 01/11/21

AGE: 22 MONTHS

TATTOO: T72

VENDOR: MI FERGUSON

YARRAWONGA CORVETTE H730 (P)

YARRAWONGA FIXER L664 (P)

YARRAWONGA G391 (P)

**SIRE: YARRAWONGA JP Q40 (P)**

YARRAWONGA DILIGENT J964

YARRAWONGA M177 (P)

WACO H651 (P)

WACO ZEUS

GOOLAGONG LEOPARD L26 (AI)(P)

GOOLAGONG G069 (P)

**DAM: GLENVIEW Q75**

MULTIPLE SIRE

GLENVIEW L13

MULTIPLE DAM

DNA SIRE VERIFIED

INOCULATIONS:

\* 3 GERM

\* 3 DAY

\* 7 IN 1

\* VIBRIO

Purchaser \_\_\_\_\_ \$ \_\_\_\_\_

WGT	DWG	EMA	FAT	SC

# Glenn Oaks T30 (P)

## 'S' Bull

69

**IDENT NO:** GLO22MT30

**D.O.B:** 01/11/21

**AGE:** 22 MONTHS

**TATTOO:** T30

**VENDOR:** MI FERGUSON

WARENDA CHARLTON (PS)  
WARENDA KILIMANJARO K4 (P)  
WARENDA E71 (P)

**INOCULATIONS:**

\* 3 GERM

\* 3 DAY

\* 7 IN 1

\* VIBRIO

**SIRE: SANTAHAT Q349 (P)**

WAVE HILL XTRA (P)  
WAVE HILL B56 (P)  
WAVE HILL M78

WACO ZEUS  
GOOLAGONG LEOPARD L26 (AI)(P)  
GOOLAGONG G069 (P)

**DAM: GLENN OAKS Q45 (P)**

WARENDA SAHARA (P)  
WAVE HILL D577 (AI)(P)  
WAVE HILL Z5 (AI)

DNA SIRE VERIFIED

Purchaser \_\_\_\_\_ \$ \_\_\_\_\_

WGT	DWG	EMA	FAT	SC

# Glenn Oaks T88 (PP)

## 'S' Bull

70

**IDENT NO:** GLO22MT88

**D.O.B:** 15/03/22

**AGE:** 17 MONTHS

**TATTOO:** T88

**VENDOR:** MI FERGUSON

YARRAWONGA CORVETTE H730 (P)  
YARRAWONGA FIXER L664 (P)  
YARRAWONGA G391 (P)

**INOCULATIONS:**

\* 3 GERM

\* 3 DAY

\* 7 IN 1

\* VIBRIO

**SIRE: YARRAWONGA JP Q40 (P)**

YARRAWONGA DILIGENT J964  
YARRAWONGA M177 (P)  
WACO H651 (P)

YULGILBAR DROVER D234 (AI)(P)  
MUNNABAH IRONMAN 960 (P)  
MUNNABAH 597

**DAM: GLENN OAKS P117 (P)**

MULTIPLE SIRE  
YARRAWONGA G783 (P)  
YARRAWONGA B501 (P)

DNA SIRE VERIFIED

Purchaser \_\_\_\_\_ \$ \_\_\_\_\_

WGT	DWG	EMA	FAT	SC

# Glenn Oaks T122 (AI)

## 'S' Bull

71

IDENT NO: GLO22MT122  
TATTOO: T122

D.O.B: 15/11/21  
VENDOR: MI FERGUSON

AGE: 21 MONTHS

YARRAWONGA TAVERN  
GLENVIEW GRANVILLE G120 (PS)  
GLENVIEW X20

INOCULATIONS:

- \* 3 GERM
- \* 3 DAY
- \* 7 IN 1
- \* VIBRIO

**SIRE: DIAMOND H RED FOO (P)**  
DIAMOND H JUSTICE (P)  
DIAMOND H N271 (P)  
DIAMOND H K083 (AI)(P)

WACO TRITON (ET)(P)  
WACO ELAND J1402 (P)  
WACO Y65

**DAM: GLENN OAKS P113**  
WACO ATTORNEY F678  
GLENN OAKS LOTUS L2  
YARRAWONGA G583

Purchaser \_\_\_\_\_ \$ \_\_\_\_\_

WGT	DWG	EMA	FAT	SC

# Win 1 TONNE OF

# RIVERINA

**PURCHASE A BULL  
FOR YOUR CHANCE TO WIN  
1 TONNE OF RIVERINA PRODUCT  
OF YOUR CHOICE.**

\* EVERY BULL PURCHASED EQUALS 1 ENTRY \*  
DRAW TO BE CONDUCTED AT CONCLUSION  
OF 2023 HEARTLAND SALE

# Darr Creek T219 (P)

## Commercial

72



IDENT NO: DRC21MT219  
 TATTOO: T219

D.O.B: 02/10/21  
 VENDOR: M A & B FRANZ

AGE: 24 MONTHS

STRATHMORE F672  
 ROSEVALE JACKAROO J566 (P)  
 ROSEVALE HARMONY F219

**INOCULATIONS:**

- \* 3 GERM
- \* 3 DAY
- \* 7 IN 1
- \* VIBRIO

**SIRE: DARR CREEK P923**

WIGHTFIELDS DOWNPOUR G21 (P)  
 ROSEVALE DAMARIS K577  
 ROSEVALE DAMARIS F449 (P)

MULTIPLE SIRE

**DAM: PINAROO 8839 (P)**

A VERY LENGTHY, SMOOTH SHOULDERED, POLLED GRANDSON OF ROSEVALE JACKAROO.

Purchaser \_\_\_\_\_ \$ \_\_\_\_\_

WGT	DWG	EMA	FAT	SC

# Darr Creek T221 (P)

## Commercial

73



IDENT NO: DRC21MT221  
TATTOO: T221

D.O.B: 17/10/21  
VENDOR: M A & B FRANZ

AGE: 23 MONTHS

STRATHMORE F672  
ROSEVALE JACKAROO J566 (P)  
ROSEVALE HARMONY F219

INOCULATIONS:

- \* 3 GERM
- \* 3 DAY
- \* 7 IN 1
- \* VIBRIO

**SIRE: DARR CREEK P923**

WIGHTFIELDS DOWNPOUR G21 (P)  
ROSEVALE DAMARIS K577  
ROSEVALE DAMARIS F449 (P)

WAVE HILL XODUS (P)  
BENELKAY KILLJOY (P)  
BENELKAY YEASTLY 646 (P)

**DAM: ROSEVALE BORONIA K121 (P)**

BENELKAY LIFELINE (P)  
ROSEVALE BORONIA H77  
ROSEVALE BORONIA B63

A COMMERCIAL BULL WE THINK A LOT OF, A POLLED BULL WITH GREAT TEMPERAMENT, AGAIN WITH GOOD LENGTH & DEPTH OF BODY

Purchaser \_\_\_\_\_ \$ \_\_\_\_\_

WGT	DWG	EMA	FAT	SC



## Darr Creek T224

### Commercial

74

IDENT NO:

D.O.B: 02/01/22

AGE: 20 MONTHS

TATTOO: T224

VENDOR: M A & B FRANZ

STRATHMORE F672  
ROSEVALE JACKAROO J566 (P)  
ROSEVALE HARMONY F219

INOCULATIONS:

\* 3 GERM

\* 3 DAY

\* 7 IN 1

\* VIBRIO

**SIRE: DARR CREEK P923**

WIGHTFIELDS DOWNPOUR G21 (P)  
ROSEVALE DAMARIS K577  
ROSEVALE DAMARIS F449 (P)

**DAM: PINAROO 731 (COMMERCIAL COW)**

FROM OUR COMMERCIAL HERD, THIS YOUNGER BULL WOULD BE VERY SUITED TO HEIFERS. HE HAS AN EARLY MATURING PATTERN WITH A CLEAN TIDY SHEATH.

Purchaser \_\_\_\_\_

\$ \_\_\_\_\_

WGT	DWG	EMA	FAT	SC

## Darr Creek T255

### Commercial

75

IDENT NO:

D.O.B: 05/02/22

AGE: 19 MONTHS

TATTOO: T255

VENDOR: M A & B FRANZ

YARRAWONGA AVENGER G300 (PS)  
YARRAWONGA KIMBO K392 (P)  
YARRAWONGA DAISY J17 (P)

INOCULATIONS:

\* 3 GERM

\* 3 DAY

\* 7 IN 1

\* VIBRIO

**SIRE: DUNLOP P406**

MULTIPLE DAM

**DAM: PINAROO 9613 (COMMERCIAL COW)**

ALSO FROM THE COMMERCIAL HERD, THIS YOUNG BULL DISPLAYS PLENTY OF BONE & RED MEAT, ATTRIBUTES OF HIS SIRE DUNLOP P406.

Purchaser \_\_\_\_\_

\$ \_\_\_\_\_

WGT	DWG	EMA	FAT	SC

# Pinaroo 1884

## Commercial

76

IDENT NO:  
TATTOO: 1884

D.O.B: 14/06/21  
VENDOR: C & DJ BOOT

AGE: 26 MONTHS

INOCULATIONS:  
\* 7 IN 1  
\* VIBRIO

**SIRE: MULTIPLE SIRE**

**DAM: PINAROO 11630**

Purchaser \_\_\_\_\_ \$ \_\_\_\_\_

WGT	DWG	EMA	FAT	SC

# Pinaroo 1885

## Commercial

77

IDENT NO:  
TATTOO: 1885 (P)

D.O.B: 20/03/21  
VENDOR: C & DJ BOOT

AGE: 29 MONTHS

INOCULATIONS:  
\* 7 IN 1  
\* VIBRIO

**SIRE: PINAROO 1730 (PS)**  
MULTIPLE SIRE  
PINAROO 267 (P)  
MULTIPLE DAM

**DAM: PINAROO 553**

Purchaser \_\_\_\_\_ \$ \_\_\_\_\_

WGT	DWG	EMA	FAT	SC

# Pinaroo 1886

## Commercial

78

**IDENT NO:**

**D.O.B:** 10/03/21

**AGE:** 29 MONTHS

**TATTOO:** 1886

**VENDOR:** C & DJ BOOT

TEE VEE B256 (PS)

PINAROO 1439 (P)

PINAROO W135

**INOCULATIONS:**

\* 7 IN 1

\* VIBRIO

**SIRE: PINAROO 1730 (PS)**

MULTIPLE SIRE

PINAROO 267 (P)

MULTIPLE DAM

**DAM: PINAROO 2X**

Purchaser \_\_\_\_\_ \$ \_\_\_\_\_

WGT	DWG	EMA	FAT	SC

# Pinaroo 1887

## Commercial

79

**IDENT NO:**

**D.O.B:** 20/06/21

**AGE:** 26 MONTHS

**TATTOO:** 1887

**VENDOR:** C & DJ BOOT

PINAROO 916

PINAROO 1209

PINAROO N5

**INOCULATIONS:**

\* 7 IN 1

\* VIBRIO

**SIRE: PINAROO 1512**

PINAROO 986

PINAROO W102 (P)

PINAROO T82 (P)

**DAM: PINAROO 692**

Purchaser \_\_\_\_\_ \$ \_\_\_\_\_

WGT	DWG	EMA	FAT	SC

# Pinaroo 1896

## Commercial

80

IDENT NO:

D.O.B: 12/09/21

AGE: 23 MONTHS

TATTOO: 1896

VENDOR: C & DJ BOOT

PINAROO 709  
PINAROO 1097 (PS)  
PINAROO T400

INOCULATIONS:

\* 7 IN 1

\* VIBRIO

**SIRE: PINAROO 1436 (PS)**

PINAROO 930  
PINAROO X77

PINAROO 1545  
PINAROO 1677  
PINAROO Z27

**DAM: PINAROO 1027 (P)**

Purchaser \_\_\_\_\_ \$ \_\_\_\_\_

WGT	DWG	EMA	FAT	SC

# Pinaroo 1889

## Commercial

81

IDENT NO:

D.O.B: 30/07/21

AGE: 25 MONTHS

TATTOO: 1889

VENDOR: C & DJ BOOT

PINAROO 916  
PINAROO 1209  
PINAROO N5

INOCULATIONS:

\* 7 IN 1

\* VIBRIO

**SIRE: PINAROO 1512**

PINAROO 986  
PINAROO W102 (P)  
PINAROO T82 (P)

MULTIPLE SIRE

**DAM: PINAROO 736**

MULTIPLE DAM

Purchaser \_\_\_\_\_ \$ \_\_\_\_\_

WGT	DWG	EMA	FAT	SC

# Beefwood Rustler R6

## Commercial

82



IDENT NO: BEE22MR6  
TATTOO: R6  
GERTRUDIS

D.O.B: 18/09/21

AGE: 23 MONTHS

VENDOR: BEEFWOOD SANTA

DUNDEE ULLYSSES (P)

DUNDEE BATTALION

SANTALANDS E17

**SIRE: DUNDEE 146 (P)**

DUNDEE ULLYSSES (P)

DUNDEE 986

DUNDEE 380

WAVE HILL Z47 (P)

FISHINGTON ELVIS E093 (P)

FISHINGTON CINDY A082

**DAM: SATELITE JESSIE JAMES J3 (P)**

WAVE HILL XTRA (P)

WAVE HILL C755

WAVE HILL W93 (P)

INOCULATIONS:

\* 3 GERM

\* 3 DAY

\* 7 IN 1

\* VIBRIO

A SCURRED TROPICAL TYPE SIRE WITH HUGE GROWTH POTENTIAL. WILL BE SURE TO PASS THESE QUALITIES ONTO HIS PROGENY. PARENTS AND GRANDPARENTS ARE ALL POLLED.

Purchaser \_\_\_\_\_ \$ \_\_\_\_\_

WGT	DWG	EMA	FAT	SC



## Tissue Sampling Unit (TSU)

Allflex® Tissue Sampling Units provide a simple but effective means for DNA testing livestock. Collect a clean, uncontaminated sample in seconds with a single squeeze motion, TSU's are easy to use and yield excellent lab results.

TSU's can be paired with a matching NLIS and visual management tag, creating a simple link between the genetics of an animal and its Identification.

For more information,  
visit [allflex.com.au](http://allflex.com.au)

**Questions?**  
1300 138 247  
[allflexcs@msd.com](mailto:allflexcs@msd.com)

® Registered trademarks.  
Copyright © 2022 Allflex Australia Pty. Ltd,  
Merck & Co., Inc., Rahway, NJ, USA and its affiliates.  
All rights reserved.

**Allflex**<sup>®</sup>  
Livestock Intelligence™

# Russell Gray's Retirement

*On Behalf of the Heartland Group, we wish Russell Gray all the best for his retirement & thank him for his many years of service.*



**Win** **1 TONNE OF**

**RIVERINA**

**PURCHASE A BULL  
FOR YOUR CHANCE TO WIN  
1 TONNE OF RIVERINA PRODUCT  
OF YOUR CHOICE.**

\* EVERY BULL PURCHASED EQUALS 1 ENTRY \*  
DRAW TO BE CONDUCTED AT CONCLUSION  
OF 2023 HEARTLAND SALE

## Special Notes to Buyers

- 1:** In the interests of buyers, all instructions covering the delivery of cattle purchased at the sale must be given in writing and signed by the buyer or his representative. **A Buyer's Instruction Slip** is provided at the end of this catalogue.
  - 2:** **A rebate of 4%** will apply to outside agents introducing clients in writing to the selling Agents 24 hours prior to the sale. **AGENTS MUST ACCOMPANY CLIENTS TO THE HEARTLAND SALE AND ALL PURCHASES MUST BE SIGNED OFF BY THE AGENT.** Settlement must be made on their behalf within fourteen (14) days of the sale. **A rebate of 2%** will be allowed to outside Agents introducing clients in writing to the selling Agents 24 hours prior to the sale, and making settlement on their behalf within fourteen (14) days of the sale. **All Rebates will be strictly enforced.**
  - 3:** We wish to point out to you, in your own interests, the position of a bidder at auction who **purchases on behalf of another party.** When this bidder discloses his principal after purchases, we stress that there is no obligation on our part to automatically send the account to this principal. The person purchasing the animal in the sale ring remains liable for payment under the 'Conditions of Sale'.
  - 4:** All bulls are from Brucellosis and TB free herds. All bulls have been inoculated with Vibrio and Lepto vaccines. All bulls have been soundness evaluated and semen tested prior to sale and are sold with a **Veterinary Certificate** to verify this statement which will be available on request.
- 5: Vendor Guarantee**
- Save and except for calves at foot, all **BULLS** are guaranteed breeders and to so prove within **six months** of the date of sale or by reaching the age of 30 months whichever date shall be the later.
  - Claims under the guarantee of fertility shall be made to the vendor within six months from the date of sale or prior to the animal entering a quarantine area other than on the vendor's property.
  - All claims must be accompanied by a **veterinary certificate** which shall clearly identify the basis of the claim.
  - Infertility resulting from **injury or disease** occurring after the sale of the animal shall not be covered by this guarantee.
  - The vendor retains the right to have the animal placed on a property nominated by him or returned to his own property for **further assessment** of fertility for a period not exceeding six months. In the event of the animal being proven fertile within the period, the costs incurred shall be borne by the purchaser. In the event of the animal not being proven fertile within the period the costs will be borne by the vendor.
  - Except for costs defined elsewhere in the conditions of sale, the **liability of a vendor** in respect of claims relating to fertility shall not exceed the purchase price of the animal(s) or to provide mutually agreed upon replacement animals.



## Special Notes to Buyers

- In the event of a claim being substantiated and the purchase price being refunded, the animal(s) shall automatically become the property of the vendor and be returned to him or disposed of according to his instructions at his expense.
  - This **guarantee shall be voided** by the purchaser if: (a) the animal is returned to the vendor
    - (i) in poor physical condition or with any injury;
    - (ii) tests carried out on behalf of the vendor within fourteen days of such return proved positive to any diseases which may affect the animal's fertility or ability to breed naturally; or
  - (b) the purchaser has collected and stored semen from a bull.
  - In the event of a dispute as to whether a lot is a breeder, such **dispute** shall be resolved by the vendor and the purchaser; and the auctioneer, while he will use his best endeavours to assist, shall have no liability or responsibility in that regard. In the event that a lot is alleged or proved not to be a breeder, the purchaser shall nevertheless be obliged to pay the auctioneer the full purchase price and any other moneys or interest payable by the purchaser in accordance with the Terms and Conditions.
- 6: Buyer inspection** of the cattle can be arranged with individual studs prior to the sale, on Monday afternoon and Tuesday, and on the morning of the sale.
- 7: Insurance cover** for all lots may be effected on the fall of the hammer. Selling Agents' representatives will be in attendance at the sale.
- 8: The canteen** will be open during the sale.
- 9: Airport**
- 1500 metre bitumen sealed airstrip with night lighting
  - PAL frequency 119.6
  - Airport tie down and parking area
  - Landing and Parking charges apply

## Bulls will be:

Semen Tested  
Breeding Soundness Evaluated  
Inoculated - Check individuals lots for details

*Please bring this catalogue to the sale*

# STUD STOCK - AUCTION TERMS & CONDITIONS OF SALE

## IMPORTANT NOTICE

All bids shall be treated as offers made upon the following Terms and Conditions of Sale and all persons present are admitted to attend the sale on the basis that they have notice of these Terms and Conditions.

1. The highest bidder shall, subject to Condition 2, be the purchaser provided that the vendor reserves the right to bid either by himself or through his agent or auctioneer and should any dispute arise among the bidders for any lot, during or immediately after sale of the lot, it shall be settled at the auctioneers absolute discretion who may, should one of the disputes advance, put the lot or lots up again. The bidding from time to time shall be regulated by the auctioneer and no bid shall be retracted.
2. The sale will be conducted on a "Sale" or "No Sale" basis whereby the lot for sale shall be knocked down to the highest bidder, but the sale will be subject to the acceptance of the highest bid by the vendor who will immediately after the fall of the hammer declare "Sale" or "No Sale". Should the vendor reject the bid of the highest bidder such bidder will have the right of first refusal of the lot at the vendor's nominated price for one hour after the lot has been passed out of the ring on the Terms and Conditions herein set forth in so far as they shall apply.
3. The details of the purchaser, the purchase price and the lot sold as recorded by the sale clerk for and on behalf of the auctioneer shall be equally binding on both purchaser and vendor.
4. The auctioneer expressly reserves the right, without giving any reason therefor, to:-
  - (a) Refuse to acknowledge any bid;
  - (b) Withdraw any lot or lots before or during the sale;
  - (c) Exclude any person from the auction venue should it think fit.
5. Each lot in all cases shall be at risk and expense of the purchaser, upon acceptance of his bid by the vendor or upon acceptance of the highest bidder's offer by the vendor whichever shall be the earlier.
6. Except as expressly provided in these Terms and Conditions of Sale no guarantee or warranty shall be given in respect of any lot sold under these Conditions as to pedigree, sex, age, breeding condition or otherwise howsoever, and no guarantee, warranty or condition whatsoever shall be implied from any affirmation made before or at the time of the sale, or from any circumstances of the sale, but in all cases where a guarantee is intended the same shall attach and be enforceable only if reduced to writing before delivery of the lot and signed by the vendor or by the auctioneer acting as agent for the vendor, and the absence of such writing shall be conclusive evidence in case of dispute that no guarantee, warranty or condition whatsoever was given or implied.
7. In the event of any dispute in respect to the sale of any lot:-
  - (i) The purchaser shall nevertheless be obligated to pay to the auctioneer the full purchase price and any other moneys or interest payable by the purchaser in accordance with these Terms and Conditions.
  - (ii) The vendor and the purchaser shall resolve the dispute between themselves;
  - (iii) The auctioneer shall have no liberty or responsibility in regard to the dispute; and
  - (iv) No lot shall be returned to the auctioneer and the purchaser shall indemnify the auctioneer for all costs, expenses and damages which the auctioneer is put to or incurs by reason of the purchaser so doing.
8. The name of the vendor for whom the auctioneer acts is acknowledged to have been furnished to purchasers prior to sale and further particulars will in all cases be furnished to a purchaser if required. In the case of any dispute the remedy of the purchaser shall be against the vendor only and in no case or under any circumstances against the auctioneer who is to be regarded for all intents and purposes as agent for a disclosed principal.
9.
  - (a) **PAYMENT** - Unless prior credit arrangements have been made in writing with the auctioneer the full purchase price for each lot shall be due and payable to the auctioneer in cash upon acceptance of the highest bid or the highest bidder's offer by the vendor and prior to delivery. Notwithstanding that delivery is given to or possession obtained by the purchaser.

or

his representative prior to the payment of the purchase money in full the property in any lot which is sold shall not pass to the purchaser until the full purchase price and all cheques, promissory notes, bills of exchange, acceptance orders or drafts given in connection with such payment have been paid and liquidated, and until property shall pass, the purchaser shall hold such lot as bailee, provided that in all cases should such payment not have been made and liquidated within 14 days of the date of sale the auctioneer reserves the right to:-

  - (i) Rescind the contract on behalf of the vendor and repossess and resell any lot;
  - (ii) Recover from the purchaser interest upon the purchase price at a rate per annum which aggregates the 90 day Bill Rate plus two percentum. For the purposes of this condition "the 90 day Bill Rate" is the rate published regularly in the Australian Financial Review, expressed as a percentage per annum. If at any time the Financial Review ceases to publish a 90 day Bill

## STUD STOCK - AUCTION TERMS & CONDITIONS OF SALE

Rate, the auctioneer shall determine and advise the purchaser of the interest rate to apply for the purpose of this condition.

- (b) The auctioneer is selling as the del credere agent of the vendor and the full purchase price of any lot sold shall be payable by the purchaser to the auctioneer and be fully recoverable by the auctioneer in its own name.
10. If the purchaser shall neglect or fail to comply with any of the within conditions, any lot purchased by him may be immediately resold by public auction or private contract, with or without notice, at the risk of the former purchaser, who will be held responsible for all loss and expenses arising out of such resale, and shall not participate in any profit accruing therefrom.
  11. Any vendor or purchaser removing the sale number from any lot after it has been sold will fully indemnify all affected parties for any loss, costs or damage should the lot be wrongly delivered.
  12. The purchasers, if more than one, shall be jointly and severally bound by these Terms and Conditions, and shall jointly and severally carry out and perform same.
  13. Any person who advances a bid on a lot shall do so on the expressed condition and understanding that should that person's bid be the highest bid and such bid is accepted by the vendor, then that person will be held personally liable for the price so agreed upon, regardless of the fact that that person may be acting on behalf of another party, wither disclosed or undisclosed to the vendor or the auctioneer, provided however, that this Condition shall not in any way negate the vendor's right to claim against any principal and in such case the bidder's liability shall be construed to be by way of guarantee.
  14. The auctioneer may, should it think fit, make arrangements on a purchaser's behalf for the feeding, watering, trucking, shipping of and general attendance to any lot after sale but no responsibility will be accepted by the auctioneer and all such service will be at the purchaser's risk and expense.
  15. No lot will be delivered until the sales invoice has been checked and signed by the purchaser or his duly authorised representative.
  16. (a) Each lot in all cases shall be sold with all faults, if any, and excepting those conditions and warranties implied by the Trade Practices Act or any applicable State Legislation which cannot be contractually excluded and excepting conditions and warranties expressly contained in these Terms and Conditions of Sale, and express or implied condition, statement or warranty, statutory or otherwise, is hereby excluded. The auctioneer is not liable in respect of any error, misdescription or omission in any particulars appearing or stated regarding the descriptions or pedigrees of any lot offered for sale and no such error, misdescription or omission shall entitle the purchaser to annul the sale or reject the lot or claim any compensation, damage or abatement in price.  
(b) Each lot will be sold subject to passing all veterinary tests required by law of the State or country to which the purchaser intends to transport that particular lot, such tests to be undertaken at the purchaser's expense and concluded immediately following the sale. In the event of a lot failing to pass these tests, the sale shall be null and void, any purchase moneys paid by the purchaser shall be refunded and property in the lot shall revert to or remain with the vendor.
  17. **GUARANTEES OF FERTILITY:-**
    - 17.1 **BULLS.** Save and except for calves at foot, all bulls are guaranteed breeders and to so prove within six months of the date of sale or by reaching the age of 30 months whichever date shall be the later.
    - 17.2 **FEMALES.** Save and except for female calves at foot, all females are guaranteed to be in calf or go into calf within six months of the date of sale or by the age of 30 months whichever date shall be the later.  
A positive pregnancy test certified by a qualified veterinary surgeon shall be sufficient evidence that the animal is in calf.
    - 17.3 Claims under Clauses 17.1 and 17.2 guarantees of fertility shall be made to the vendor within six months from the date of sale or prior to the animal entering a quarantine area other than on the vendor's property.
      - 17.3.1 All claims must be accompanied by a veterinary certificate which shall clearly identify the basis of the claim.
      - 17.3.2 Infertility resulting from injury or disease occurring after the sale of the animal shall not be covered by this guarantee.
      - 17.3.3 The vendor retains the right to have the animal placed on a property nominated by him or returned to his own property for further assessment of fertility for a period not exceeding six months. In the event of the animal being proven fertile within the period, the costs incurred shall be borne by the purchaser. In the event of the animal not being proven fertile within the period the costs incurred shall be borne by the vendor.

## STUD STOCK - AUCTION TERMS & CONDITIONS OF SALE

- 17.4 LIABILITY OF A VENDOR. Except for costs defined elsewhere in the conditions of sale, the liability of a vendor in respect of claims relating to fertility shall not exceed the purchase price of the animal(s) or to provide mutually agreed upon replacement animals.
- 17.5 REFUNDS. In the event of a claim being substantiated and the purchase price being refunded, the animal/s shall automatically become the property of the vendor and returned to him or disposed of according to his instructions at his expense.
- 17.6 This guarantee shall be voided by the purchaser if -
- The animal is returned to the vendor -
    - in poor physical condition or with any injury;
    - tests carried out on behalf of the vendor within fourteen days of such return proved positive to any diseases which may affect the animals fertility or ability to breed naturally; or
  - the purchaser has collected and stored semen from a bull or embryos from a female.
- 17.7 In the event of a dispute as to whether a lot is a breeder, such dispute shall be resolved by the vendor and the purchaser and the auctioneer, while he will use his best endeavours to assist, shall have no liability or responsibility in that regard. In the event that a lot is alleged or proved not to be a breeder, the purchaser shall nevertheless be obliged to pay the auctioneer the full purchase price and any other monies or interest payable by the purchaser in accordance with these Terms and Conditions.
18. (a) Each lot shall be at the risk of the vendor in respect of any damage or injury, whether by disease, accident or otherwise, for the period that the lot be in the custody of the auctioneer, PROVIDED THAT the auctioneer, its servants, agents and employees shall use all reasonable care to protect and control the lot while it is in the auctioneer's custody AND PROVIDED THAT when a lot has been sold, it shall be at the risk of the purchaser in all respects.
- (b) If any vendor brings to the sale premises any lot which is dangerous, or infected with any disease, that the vendor shall be liable for all injury, damages, costs, losses, or expenses which the auctioneer may sustain, incur or be put to either directly or indirectly as a result of the vendor so doing. The auctioneer reserves the right, at its absolute discretion, to exclude from the sale, or put out of the sale venue or dispose of, any lot which in its opinion shows signs of any disease, whether infectious, contagious or not, or any serious fault or of being dangerous.
19. DELIVERY - Except at the discretion of the auctioneer no lot shall be delivered to the purchaser unless payment of the purchase money together with any additional charges incurred including those expenses incurred by the auctioneer pursuant to Condition 14 hereof, is first made by the purchaser to the auctioneer. Release of lots may be withheld by the auctioneer until personal cheques are cleared.
20. In these conditions:-
- References to "Auctioneer" shall be taken to mean the context so admits, the selling agent or any member, subsidiary or related corporation or body, officer, agent or employee thereof, authorised by the vendor to conduct the sale of the lot;
  - "Purchaser" shall have the meaning ascribed to it in Condition 1;
  - "Vendor" shall mean the person or corporation upon whose account lots are offered for sale and where a stud or farm is named shall mean the proprietor of that stud or farm;
  - "Lot" shall be taken to mean the animal offered for sale and/or sold by the auctioneer on behalf of the vendor.

### IMPORTANT NOTICE

The selling agent, its members, subsidiary or related corporations, officers, agents, and employees for themselves and for whom they act while exercising due care provide all information without responsibility and give no guarantee whatsoever as to its accuracy. All persons who attend the sale do so entirely at their risk and the selling agent, its members, subsidiary or related corporations, officers, agents, employees and its principals, for liability of whatever nature for any injury or damage whatsoever which may occur. The hammer price is exclusive of GST but GST will be applied to the final hammer price and included on the invoice.

***Every care has been taken in compiling the catalogue & supplementary sheet for the Heartland Santa Gertrudis Breeders Group Sale to ensure accuracy of information. No responsibility however is accepted by The Group or individual members for any errors which may have occurred.***

# Sale Results

	No.	Gross	Average
<b>'S' Bulls</b>			
<b>Herd Bulls</b>			
<b>TOTAL</b>			



[whitelivestockservices@gmail.com](mailto:whitelivestockservices@gmail.com)

Brett: 0438 613 151

Ashlee: 0428 108 439



**CUSTOM FEED RATIONS**

**UNLED SALE PREPARATION**

**SHOW PREPARATION AND EXHIBITION**

**- BEEF UP YOUR INVESTMENTS -**

# Buyers Instruction Sheet

>>>> **NO BID - NO BUY** <<<<<

Name .....

Address .....

.....

Email .....

Account to .....

Transfer papers required  Yes  No

(if yes, Stud No. ....)

Lots purchased .....

Total number of bulls purchased .....

Rail trucks required .....

Destination .....

PIC Number .....

Insure for (*state period*) .....

Further instructions .....

.....

.....

.....

.....

Signature .....

Date .....

Bid Card No.

*Our sincere thanks are extended to:*



- > the Buyers and Bidders
- > the Auctioneers and Agents
- > PJH Livestock and AuctionsPlus
- > Group Members, and
- > everyone who participated in the
- > 31st Heartland Santa Gertrudis Breeders
- > Group Sale.

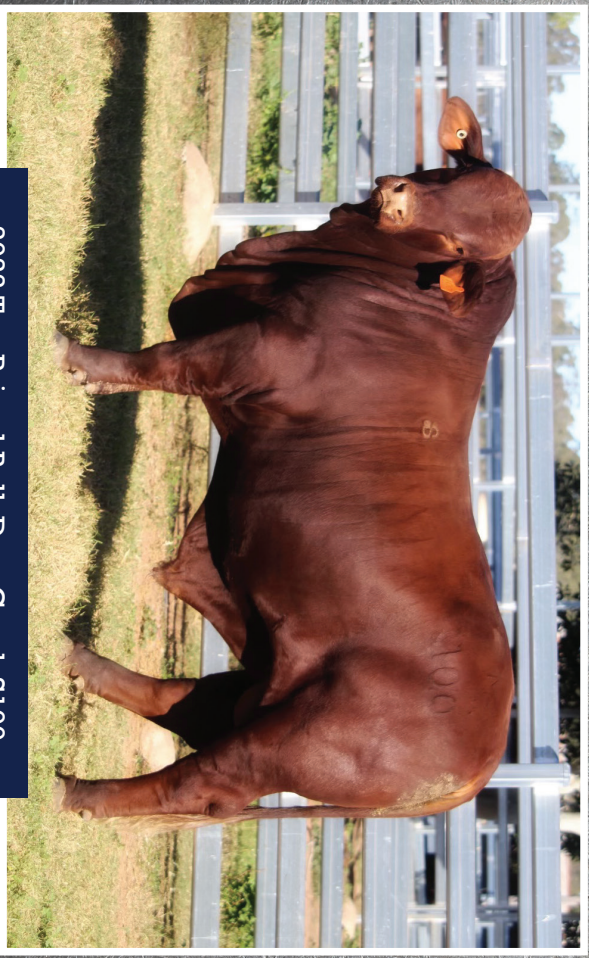
*We thank you for your attendance and wish our buyers the very best of luck and every success with their purchases.*

*We look forward to seeing you again next year.*

**Top Priced female at the Pinaroo Female Sale held in March 2023**



SANTA GERTRUDIS  
BULL SALE  
Wednesday 6th  
September 2023



2022 Top Priced Bull, Darr Creek S100