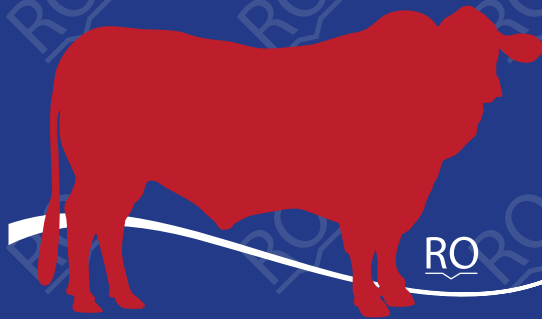


12th Annual
52 yrs of breeding

Poll Santa Gertrudis Bull Sale

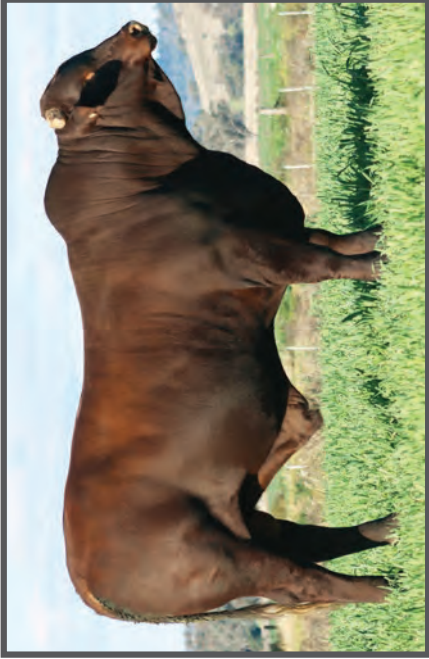


Benelkay

Thursday 17th August 2023 - 1pm
at 'Glenmore' Mullaley, NSW

www.benelkaysantas.com.au

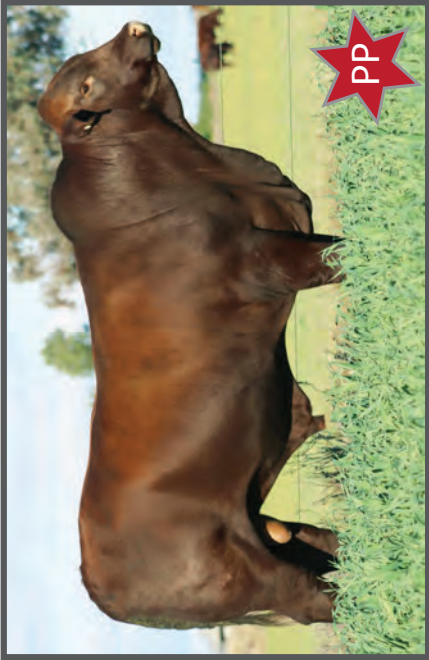
Previous Sale Toppers 2022



Lot 7 Benelkay Roundup R004
Sold to Valencia SGS Capella QLD \$38,000



Lot 15 Benelkay Reflection R034 (PP)
Sold to Nungar Plains SGS Cooma NSW \$32,000

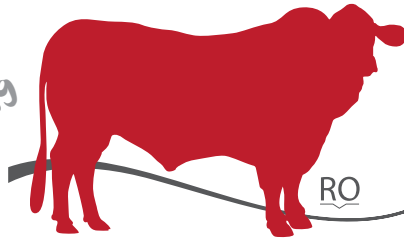


Lot 3 Benelkay Renovator R014 (PP)
Sold to Dangarfield SGS Taroom QLD \$50,000



Lot 14 Benelkay Renegade R046 (PS)
Sold to Forrest Park SGS Blackall QLD \$37,500

12th Annual
52yrs of Breeding



Benelkay

Poll Santa Bull Sale

Thursday 17th August 2023 Sale Commencing
1pm on Property
'Glenmore' Mullaley

50 SANTA BULLS

48 'S' Bulls and 2 Herd Bulls

Inspection from 9am or contact Andrew 0427 435 201

Download a catalogue pdf from: www.benelkaysantas.com.au



AuctionsPlus

Selling Agents Gunnedah Office: (02) 6742 0355

Nik Hannaford Elders Manager Gunnedah: 0417 201460

Jon Glover Gunnedah 0428 486887

Brian Kennedy Stud Stock: 0427 844047

Elders Stud Stock Auctioneer: Lincoln McKinlay: 0400 552458

Andrew Orman
0427 435201



Invitation

Andrew, Jules, (Sam Dec) and Georgie are pleased to extend an invitation to you to attend our 12th annual Benelkay Poll Santa Gertrudis Bull Sale on Thursday the 17th of August 2023 at 1.00pm on property "Glenmore" Mullaley. This is the week before Ag-Quip this year, so accommodation should be readily available in Gunnedah and surrounding towns.

We are pleased to present to you our line-up of fifty Poll Santa Gertrudis bulls, with 50% Homozygous Poll Bulls. I feel confident with the overall quality and evenness of this sale team, with an outstanding number of Burrumurra Boss (PP) bulls represented in the sale draft. We are very proud to offer this year's group of sale bulls and feel they are of the highest quality we have offered, mostly due to the high standard of our own sire battery we are using over our 400 stud cows. This year there is a large offering of bulls by our own Benelkay sires that were mated as yearlings over 106 stud heifers, there are some very pleasing results from this mating, and it is a testimony to the quality of these young bulls that were then sold through our annual sale in 2021.

This year we have DNA sire identified our sale team so you the buyers can have every confidence in the parentage of the sires you are buying from our Stud. We are offering a range of types of bulls to suit different market requirements and realize not all bull buyers are looking for the same type of bull for their operation. We have aimed to keep abreast of the beef industry and have made considerable investments in poll sires in the past fifty years to produce seed stock bulls to suit both the commercial and stud sectors. We have started using our own Homozygous Sires to increase this trait within our own female stud herd, with very pleasing results.

All bulls will have BreedPlan figures to assist you in the selection of the sire to suit your breeding objectives. Also, what must be realised is that we buy in all our sires from non Breedplan herds, as these bulls have many other traits we are chasing in our herd, and we need to have other genetics coming into the system of Breedplan. The downside of this consequence is it does take a few years to get reliable data on the un- Breedplan, non – proven Breedplan bulls. Due to this most of our sires start below breed average for all their data so it does take a while to get the amount of progeny on the grown and tested to get the accuracy of the Breedplan traits comparable to herds only using Breedplan bred sires.

We will also have raw data figures for weight, DWG, scans for EMA and Fats. All bulls are semen, morphology (Laboratory Morphology examinations done by QMSL - Goondiwindi) and vet tested by Mark Baker, Gunnedah Saleyards Veterinary Clinic. Our aim is to provide paddock reared fit and healthy bulls, so cattlemen can be confident in their bull purchases. You can view pictures of the sale draft at www.benelkaysantas.com.au or contact Andrew 0427 435 201 directly for more information or to arrange inspections presale if you feel that it will assist you. Looking forward to catching up with you all on sale day.

Kind Regards

Andrew Orman





AuctionsPlus

How to Register and Bid on AuctionsPlus

1

Go to www.auctionsplus.com.au to register at least 48 hours before the sale.

2

Select "**Sign Up**" in the top right hand corner.

3

Fill out your name, mobile number, email address and create a password.

4

Go to your emails and confirm the account.

5

Return to AuctionsPlus and log in.

6

Select "**Dashboard**" and then select "**Request Approval to Buy**".

7

Fill in buyer details and once completed go back to Dashboard.

8

Complete buyer induction module (approx. 30 minutes).

9

AuctionsPlus will email you to let you know that your account has been approved.

10

Log in on sale day and connect to auction.

11

Bid using the two-step process – unlock the bid button and bid at that price.

12

If you are successful, the selling agent will contact you post sale to organise delivery and payment.

For more information please contact us on:

Phone: (02) 9262 4222

Email: info@auctionsplus.com.au

Health - Vaccinations

7 in 1, Vibro, AD&E and Multimin, Botulism Vaccinations have been done on the 22.01.2023 and 18.06.2023. All sale bulls have received two shot this year and should receive a booster to fall into your own breeding program.

Bovine Johne's disease

Benelkay stud is located in a Bovine Johne's disease protected clean area. There have never been any traces of this disease detected at our stud's properties. We have completed a Grazing Manual Biosecurity Template, version 1.1 before the 30/06/2017. There has been veterinary oversight into the development of our biosecurity plan, as we aim to remain a J-BAS 7 score.

Treatments

All bulls have been treated on the 22.01.2023 with Ivomec pour and on 18.06.2023 with Cydectin pour on.

Feeding

The Sale Bulls have been running together in a large mob of about 100 male cattle since weaning. From January 2023 they have been run in a sale mob of bulls of around eighty, then cut down to a mob of fifty in July and split into paddock and Sale bull mobs. Since 1st April they have been run on native grass with access to Wheat Stubble Hay, 5% cotton seed and 20% cracked Barley. Since the 1st May to sale time, they have been on a sale ration of 50% cracked Barley, 10% cotton seed, 5% Canola Meal and Wheat stubble straw.

Handling

All bulls are handled with four-wheel motorbikes and dogs. Our bulls have never been handled with horses. All bulls are quiet but as we all know they can react differently when put into pressure situations or different surroundings, particularly on sale day or being transported as they have never left the property.

Semen / Morphology Tests

All bulls have been evaluated for breeding soundness and semen tested by Mark Baker, BVSc & Associates of Gunnedah Saleyards Veterinary Clinic. Testing will be done over two days 10.06.2023 and 16.06.2023. Morphology testing has been carried out at the Goondiwindi Laboratories QLD. Individual morphology results will be available on sale day.

Scanning

All bulls have been scanned for EMA, Fat (Rib, Rump, IMF%) and Scrotal Size Measurements, by Bovine Scanning Services (Lonnie Stone). This will be carried out on the 6th August 2023. The raw data will be available a few days before our sale on social media and our web site as well as hard copies on sale day.

Inspections

Inspections are welcomed anytime. Bulls will be yarded by 9.00am on Sale day. Pre-sale day inspections can be arranged by contacting Andrew Orman on 0427435201 or Elders Gunnedah. Supplementary sheets containing all relevant bull information will be available a few days prior to the sale and on sale day. If you would like a copy emailed to you please contact Andrew or visit our website or Facebook page to download a copy, a few days prior to sale day.

Insurance

We have arranged for company insurance representatives (Elders and WFI) to attend the sale and we highly recommend that buyers insure their purchases from the fall of the hammer.

Rebate

The vendors offer to pay a 2% rebate to outside agents who introduce their clients in writing to them 24 hours prior to the sale and settle in full on their behalf within 7 days of the sale.

AuctionsPlus

The sale will be interfaced with auctions plus, for clients that cannot attend on sale day, please organize with your agent at least 24h hours prior to sale day. Phone bidding can be organised through Elders Gunnedah, contact Jon Glover 0428 486887 Nick Hannaford 0417 201460 or Brian Kennedy Elders Stud Stock 0427 844 047, there is good mobile phone reception at the bull sale venue.

Air Strip

An all-weather air strip is available 5km from the sale venue, to use this please contact Andrew Orman.

Accommodation We recommend

Gunnedah:

Maynstay Motel
380 Conadilly St..... (02) 6742 7150

McKellar Motel
342 Conadilly St..... (02) 6742 6838

Boggabri:

Vault Accommodation
135 Merton St (02) 6743 4400

Narrabri:

Bellview Motel Narrabri
Cnr Newell Hwy & 132 Barwan St (02) 6792 3844
Crossroads Hotel Narrabri
168-170 Maitland St..... (02) 679 25592

Coonabarabran:

Acacia Motor Lodge
10 John Street (02) 6842 1922

Delivery

Please fill out all details in the delivery slip at the back of this catalogue, and organise with Elders post sale before you leave, to aid in the delivery of your bulls. Delivery can be on sale day. If you wish to have another delivery date please contact Andrew Orman or Elders

Gunnedah team. The vendors will provide all care with your purchases but will not be responsible after the fall of the hammer for any injury to bulls.

Transport

Local carriers have been contacted and will be present on sale day. Please look for advertising within this catalogue.

Breeding Guarantee

We have taken a lot of time and effort to ensure we are presenting fertile bulls for sale that are structurally sound to the best of our knowledge, we want good results from your investment, as do you. If you have any issues with your purchase please contact us, we are willing to work together for a resolution acceptable to both parties for any reasonable claim that is made in a reasonable time frame.

Catering / Refreshments

The local Emerald Hill Progress Committee will be catering for the day along with The Coffee Float Gunnedah.

Risk & Responsibility

Any person attending the sale, do so at their own risk. The vendors assume no liability, legal or otherwise for any injury, accident, loss or damage to any person or property.

Disclaimer

The vendors and agents have produced this catalogue with accurate information, however will not be responsible for any errors or omissions.

GST

Prices for lots sold will be GST exclusive at the fall of the hammer and 10% will be added at time of invoicing.

Directions to Benelkay Poll Bull Sale, at "Glenmore", Mullaley,

With navigators use Keechs Rd Goolhi as a reference point, with google use Benelkay Santa Gertrudis Stud.

From Gunnedah.

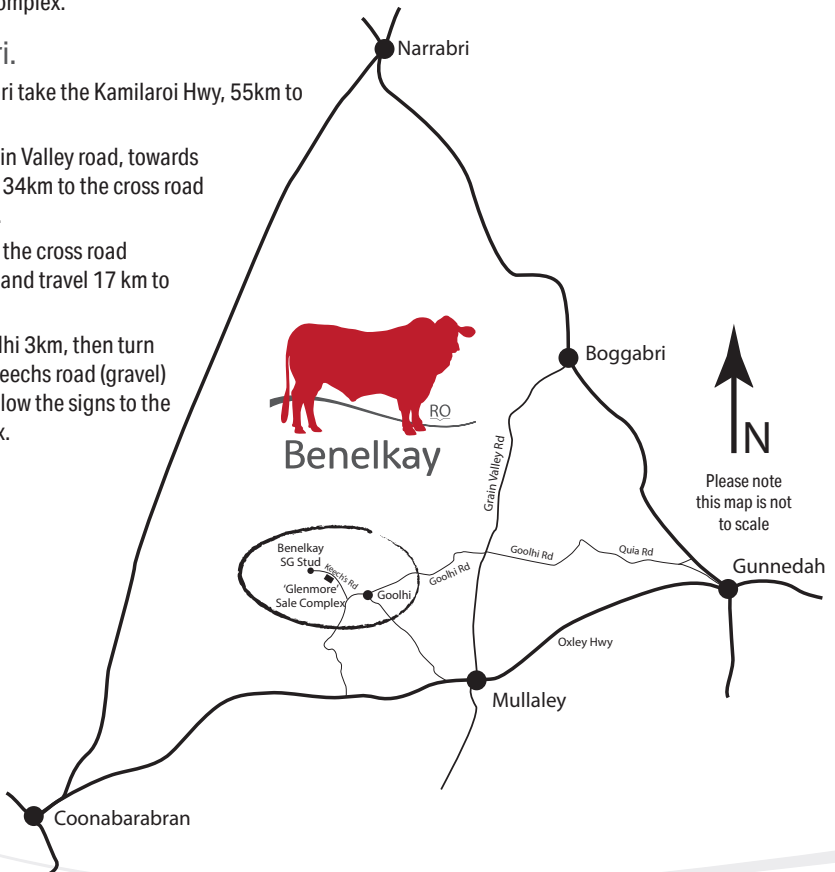
- From Gunnedah take the Oxley Hwy, 34 km's to Mullaley.
- Pass through Mullaley on the Oxley Hwy and travel 5km's towards Coonabarabran, then turn right onto the Booloola road, to Goolhi.
- 15km to Goolhi, turn Left and go 3 km, then turn Right onto Keechs road.
- 6.5km on Keechs road, (gravel) and follow signs to the sale complex.

From Coonabarabran.

- Take the Oxley Hwy 54km towards Mullaley; turn Left off the Hwy to Goolhi.
- 10km down the gravel road, turn Left, as you come onto the tar, onto Keechs road (gravel).
- Go 6.5km on Keechs road; follow the signs to the sale complex

From Narrabri.

- From Narrabri take the Kamilaroi Hwy, 55km to Boggabri.
- Take the Grain Valley road, towards Mullaley, for 34km to the cross road intersection.
- Turn right at the cross road intersection and travel 17 km to Goolhi.
- Go past Goolhi 3km, then turn Right onto Keechs road (gravel) go 6.5km follow the signs to the sale complex.



Poll Gene Marker test

The Australian Poll Gene Marker test was initially developed by the Beef CRC and released to industry in 2010. The initial test was based on a single DNA marker and worked very well in some breeds, but not so well in others.

The test was further developed by the CSIRO, with funding assistance from Meat and Livestock Australia, and a greatly improved test was released in 2013. The improved Australian Poll Gene Marker test uses the same marker as the initial test but also incorporates information from nine other markers close by in the genome. The genotype information from all ten markers is combined to create a 'haplotype' to more accurately track the origin of alleles and associate them with being horned or polled. The additional marker information increases the proportion of animals for which the test returns an informative result, and also increases the accuracy of those results.



Breeders who are able to apply a level of selection pressure to their cow herd can also use the same philosophies that have been outlined for bulls. Retaining only polled or scurred females will increase the frequency of polled genes within the herd, while giving priority to polled females that have been identified by DNA test as being homozygous polled will maximise the rate of polled gene introgression into the herd.

Importantly, breeding for polledness should always be balanced with selection for other traits of economic and functional importance within the breeding objective. Simply selecting for polledness without any consideration of other important traits is not recommended as it may potentially compromise the genetics of animals for these other traits.

An example of the test result is displayed above right. The results will describe the percentage chance of the most likely genotype, with the possible genotypes being reported including homozygous polled (PP), heterozygous polled (Ph) or homozygous horned (hh). The accuracy of the test result will

be reported alongside the most likely genotype. This accuracy will range from 90% to 99%. For animals where the test cannot return an informative result (that is, the accuracy of the prediction is less than 90%) the result will be returned as ND (Not Determined).

For further assistance in understanding the genetics of polledness, or the use of the Australian Poll Gene Marker test, contact staff at Southern Beef Technology Services (SBTS) or Tropical Beef Technology Services (TBTS).

Bull 1	Bull 2
<p>Polled gene</p>  <p>PP 98%</p>	<p>Polled gene</p>  <p>PH 95%</p>

References

"The Australian Poll Gene Marker Test" Fact Sheet, CRC for Beef Genetic Technologies, (2012), Accessed November 2013 <http://www.beefcrc.com/publications/fact-sheets.html>.

"Transitioning to a Polled Herd" Fact Sheet, CRC for Beef Genetic Technologies, (2012), Accessed November 2013 <http://www.beefcrc.com/publications/fact-sheets.html>.

Meat and Livestock Australia (2013), "The Australian Poll Gene Marker Test", Animal Health and Welfare Fact Sheet

Please note: The results of these testings will be in our supplementary sheets a few days before the sale or contact Andrew 0427435201

Looking after your new bull

We have put a lot into getting your purchase ready with breeding and management and now it is up to you to continue to prepare your considerable investment for the future.

The following are a few tips:

- At auction sales, remember that possession is yours after the fall of the hammer.
- We recommend that you insure your bull - it is a new asset to your property.
- Pen bulls on the truck from different vendors / properties separately.
- Handle him quietly at all times, no buzzers have been used on these bulls.
- Have some cattle in the yard for company to run him with for a week or so to get acquainted to your property. All will be strange to him as he has been taken from his mates and even the water and feed will be different as well as your environment.
- Check the health treatments he has had and that they are appropriate to your area and treat with anything additional you think he might need after he has settled in.
- At joining it is preferable not to mate young bulls multiply with older sires, as they will not allow the young bulls near the cows and they could get injured.
- Try and get him to his selected group of cows preferably in a group with other cattle or bring the group to him.
- Check him regularly, seeing he is walking well, no swelling of joints or in his sheath, if possible that he is serving and that not too many cows are returning to heat.
- If you suspect any problems occurring quick action may cure a problem before it escalates.
- Have a spare bull or bulls available to cover any break downs, do not give the young bull

increased numbers of females to cover other breakdowns within the herd. Also young heifers may be in season for less time than cows and you will need more bulls to cover them.

- After the joining remove him and give him any health treatments such as for internal and external parasites and any vaccinations appropriate to your conditions.
- Give him every chance to grow out and develop after his first joining as your Santa bull will continue to grow and be cutting teeth, for at least a further twelve months.
- Annual pre joining vet examination will help with your next joining results.
- Bulls are a large investment for any breeding herd and they have a major effect on herd fertility. A little time and attention to detail to make sure they are fit, free from disease and actively working is well worthwhile and can deliver huge results to our agricultural businesses.

If you have any queries or problems please contact us as soon as you can so that we can assist you.

Joint Breeding Objectives

Our breeding objective is to produce structurally correct moderate framed Polled Santas, balanced in fertility traits, weight traits, muscling and fat. Always mindful of maintaining an easy doing functionally efficient and fertile herd, with a broad genetic base to meet the current market needs of our clients and to improve the profit in their operations.

To achieve our objectives we employ the following strategies:

Fertility

- We don't pamper the stud cow herd; they are run on a commercial basis, in conjunction with cropping. This strategy indicates the cattle that will perform especially for fertility and gives clients confidence that the sires they purchase will perform in any climate.
- Semen and morphology test bulls and use as high a quality tested bull that meets our breeding objectives.
- Maintain soft fine haired cattle. These perform better in our climate and are more fertile.
- Select for cattle with above breed average fat. Fat is important for carcass coverage (MSA), doing ability leading into better fertility.
- Keep a balance between milk and fertility traits.
- Identify sires that have excessive birth weights.
- Select for cattle with tidier sheaths. This gives us much better fertility in both bulls and females also complying better with the MSA requirements.

Maturity/Meat Quality

- Select for moderate framed cattle with above breed average young growth.
- Select cattle that are able to perform well in a range of markets for clients.
- Our style of Santa Gertrudis cattle are able to target the vealer market, the feed lot and all the way through to the bullock trade.
- Select for quiet temperament for handling and meat quality issues.

Informed decisions

- All cattle are performance recorded for as many traits as we can manage, keeping in mind commercial considerations. E.g. we don't scrotal score all male calves as we castrate a large number of bull calves.
- Performance data is used in mating decisions to produce balanced progeny.

**Freight Incentives available please
enquire Andrew 0427435201**

BENELKAY STUD

History:

In 1963 the Benelkay herd had its beginnings situated west of Walgett as a cross breeding operation, started by Andrew's parents Dick and Dianne Orman. The cow herd was based on Weebollabolla Shorthorn cows and Santa Gertrudis Bulls, mostly of Wave Hill, Gylanda, Ameroo, Kalinga, Pampoola, Marengo, Murrumbo and Yarrowonga bloodlines. In 1970 the Benelkay stud was registered with the SGB(A)A and became Stud number 810. With the select purchases of stud cows and the existing commercial line of straight Santa Gertrudis cows, the stud had a good genetic base to form the early stud and grow it into what it is today.

Today the Benelkay Santa Gertrudis Stud is run on "Glenmore" and Tuppence", located 34km North West of Mullaley, in the Goolhi district, or 68km West of Gunnedah. "Glenmore" is a 1650 Ha property comprising of gently undulating to hilly country with a mixture of heavy black basalt, red clay loams and sandy soil types." Tuppence" is a 730 Ha property situated next to Glenmore, and was originally part of the historic Goolhi Station, that once covered most of the North Western side of Mullaley. Tuppence is the location of the new Benelkay Sale Complex that was built for our second annual sale. The stud has become our passion some say obsession, and something that we enjoy as a family with our two children Sam and Georgie helping and being involved when they can.

Stud Focus:

With a strong genetic base of 400 classified stud cows. Benelkay is well placed to breed cattle to suit the modern-day commercial cattleman. With a strong emphasis on poll cattle that can have the ability to enhance the carcass traits in the stud and commercial cattle industry. We have selected and used only poll sires for over thirty – five years giving us a large genetic poll base to draw from. This year's sale team will have twenty-four Homozygous (PP) bulls represented which gives the industry an opportunity to be able to purchase sires to fast track their own herds towards poll

genetics. These results will be on the supplementary sheet or ring us presale. The Benelkay stud is run on a commercial basis with no favouritism. With years of work going into the fertility, temperament, and the need to breed cattle that are soft, easy doing and are saleable all year round we have found this style of cattle can compete with and better other breeds, but still retain the excellent attributes of the Santa Gertrudis Breed. We have found over time that moderate cows have the best fertility, and we can move a little each way with size to suit the needs of most beef markets. Our entire herd is performance recorded, all stud and commercial cows with Santa Gertrudis Group Breedplan. We find Breedplan, a useful tool in our herd selection, as well as using visual assessment. Both tools enable us to make fast gains in the desired traits we believe our herd needs to be achieving.

Sires in the past years making an impact on our stud's direction, have been, Sanford Vale Juggler (P). Wave Hill F73 (PS), Wave Hill Napperby (P), Bullaminkinka H82 (PS) and Bullamakinka Dreamtime (P). Also, SuJo First Class (P) who has proved to be a wonderful sire, taking the stud forward in the direction, we believe the industry needed to be heading. His progeny has had a huge impact within the stud, and we are still benefiting from his strong bloodlines. Yarrowonga M134 (PS) and Burrumurra Boss 152 (PP) are both creating their own history within the stud in the last few seasons with outstanding results.

Every year we try to bring new genetics into the sale for our clients. This year we are proud to introduce new Sires Yarrowonga Quicksilver (PP) and Yarrabee Inforce (P). Both Sires have introduced fresh genetics within our herd and have contributed to the sale team very positively. There are also several Benelkay Sires that were used as yearling bulls to multiply join 106 stud heifers, with outstanding results. These young bulls have equalled the high-priced introduced sires within our stud. We then offered these bulls back through our 2021 Annual Sale giving people the opportunity to purchase bulls of a very high calibre, for their own herds.

Sire References 2023



BURRAMURRA BOSS 152 (PP)

Boss a Homozygous poll was purchased as a led bull at the 2016 Santa Central Sale for \$17,000. Weighing 891kgs at 22months with a DWG of 1.30kg, Scrotal of 40cm and an EMA of 122. After watching him win his class at

the Ekka we thought we would purchase him for his out cross genetics, growth, tropical dark skin type and quiet temperament. Boss has grown into an eye appealing sire, great thickness, and good depth with plenty of scale. He has thrown progeny with strong breed character, and we are seeing strong results through his females in the breeding program. Boss produces exceptional females with scale and breed phenotype. We are pleased with both his male and female progeny. Top priced son to date is Benelkay Quatermaster Q012 (P) selling to Jock Cunningham "Hallcraig Santas" for \$30,000 in 2021. Benelkay Newman (PP) has also been kept as a sire with sons in this year's sale. Boss is a sire that throws consistency in his progeny producing scale, thickness and heavy bone progeny with dark red coat colour that is hard to purchase. It is pleasing to see his sons making an impact in the studs they have been sold into.

200D	400D	600D	Mat. Cow	Milk	SS	Carcass Wt	EMA	Rib	Rump	RBY	IMF (%)
+10	0	+16	+14	-	-0.7	+3	+3.3	-0.5	-1.2	+1.5	-0.1
91%	88%	88%	77%	-	86%	68%	60%	70%	69%	52%	68%

Sire of lots 9,10,11,13,19,22,23,24,25,29,32,33, 34,36,43,46,47,49,50



BENELKAY MISSOURI M056 (PS)

Missouri was used as a sire, prolonging the Dreamtime / Gyral bloodline. Also being out of a Dangarfield Upkeep cow, which has been a strong female line of cattle in our herd for several years. He has produced consistently as we knew he would, breeding large framed, dark, quite progeny that are soft with a strong outlook.

200D	400D	600D	Mat. Cow	Milk	SS	Carcass Wt	EMA	Rib	Rump	RBY	IMF (%)
+24	+23	+30	+49	+6	+0.6	+15	+1.0	+0.2	-0.3	0.0	+0.1
75%	73%	76%	69%	45%	69%	62%	53%	59%	58%	47%	60%

Sire of lots 8,26



YARROWONGA M134 (PS)

Purchased at lot 4 for \$38,000 in the 2017 Yarrowonga Waco Annual Bull Sale. M134 (PS) a son of Waco Zeus, at 25 months he weighed 900kgs, DWG 1.20, EMA 121, 40 cm scrotal and had a 93% morphology. Purchased

for his Santa Gertrudis phenotype, thickness, depth, heavy bone, and quiet disposition. M134 is proving to be our go to sire, he has exceptional fertility siring over eighty calves in a single season. Placing him as the top sire for progeny recorded in one season within the Santa Gertrudis Breed. He has developed into a mountain of a bull and is breeding exceptional progeny both male and female, with his classification rate of his progeny being well over 90%. He is producing what we are aiming for with his consistency of breeding quality, strong poll cattle that carry all the attributes producers are looking for in, Santa Gertrudis cattle. Top priced son to date is Benelkay Renovator R014 (PP) who sold for \$50,000 to Ben and Amanda Adams Dangarfield Santa Gertrudis Stud in 2022. In the 2022 sale twenty-one sons sold to average \$15,500 with eleven sons selling into studs.

200D	400D	600D	Mat. Cow	Milk	SS	Carcass Wt	EMA	Rib	Rump	RBY	IMF (%)
+19	+30	+32	+41	+2	+0.1	+13	-1.6	-0.9	-1.5	-1.1	+0.1
86%	86%	87%	75%	35%	85%	68%	61%	70%	70%	54%	69%

Sire of lots 4,40,41



BENELKAY NEWMAN N330 (PP)

Kept for a joining season before being sold locally he was used over a select number of cows with outstanding results. Very dark in colour with a fine skin type, exceptional muscling and the bonus he was a homozygous Poll (PP), we felt we could breed some very attractive cattle out of him. Newman has not let us down as can be seen in the bulls on offer within this sale team. Strong carcass attributes that would suite both stud and commercial producers.

200D	400D	600D	Mat. Cow	Milk	SS	Carcass Wt	EMA	Rib	Rump	RBY	IMF (%)
+7	+5	+14	+7	0	-0.2	+5	+3.5	+0.1	-0.1	+1.2	-0.3
74%	71%	72%	65%	36%	65%	59%	50%	57%	57%	44%	58%

Sire of lots 1,3,5,6,16,21



YARROWONGA QUICKSILVER Q680 (PP)

Purchased at the Yarrowonga Waco Annual Bull Sale in 2020. At twenty months he weighed 784kgs, 40cm scrotal, 1.18 DWG, EMA 128, Rib and Rump fats of 12 and 9, as a bonus he was a homozygous Poll (PP). He has developed into a big strong sire with plenty of length and scale. We were attracted to his sire Restdown 378 (P) when Yarrowonga purchased him and thought we would purchase one of his sons. These are Quicksilver's first sons for sale, and we are pleased at the way his stock are performing in our herd.

200D	400D	600D	Mat. Cow	Milk	SS	Carcase Wt	EMA	Rib	Rump	RBY	IMF (%)
+4	+8	+14	+19	-	+0.3	+5	-	-0.6	-1.4	-	-0.1
51%	50%	54%	45%	-	57%	40%	-	44%	43%	-	45%

Sire of lots 20,37



BENELKAY QUILPIE Q002 (P)

Was used as a yearling bull over stud heifers at Benelkay then sold in the 2021 sale for \$15,000 to Calanbah Santa Gertrudis Stud. Quilpie was a complete carcass bull and was one of the higher performing bulls with a fantastic constitution a very masculine sire displaying length, plenty of volume and width over his top line. At 26 months he weighed 842 kgs, DWG 1.08, 38cm Scrotal, 140EMA and a morphology test at 91%.

200D	400D	600D	Mat. Cow	Milk	SS	Carcase Wt	EMA	Rib	Rump	RBY	IMF (%)
0	+8	+3	+16	+1	-0.5	+7	+1.2	-1.3	-1.5	+1.0	-0.3
67%	69%	72%	64%	41%	70%	58%	51%	59%	59%	46%	60%

Sire of lots 12, 18, 28, 38, 44



YARRABEE INFORCE 1459 (P)

Purchased as the top priced bull at the Yarrabee 2020 Annual Sale at Emerald. He has developed into a Sire with plenty of volume and scale. When purchased at twenty – four months he weighed 900kgs, DWG 1.17, 150 EMA, Scrotal of 41cms. He is a very active bull siring plenty of calves in a short period of time. Inforce is a strong powerful sire with a lot to offer, who has been breeding consistently.

200D	400D	600D	Mat. Cow	Milk	SS	Carcass Wt	EMA	Rib	Rump	RBY	IMF (%)
+16	+19	+34	+26	+3	+1.7	+16	+3.1	+0.3	-0.2	+1.2	-0.4
68%	68%	68%	61%	48%	61%	56%	48%	52%	51%	41%	51%

Sire of lots 17,42



BENELKAY QATAR Q076 (PS)

Qatar was again used as a yearling bull over stud heifers at Benelkay. Sold to Donoghue Farms for \$18,000 in 2021 Benelkay sale, he was a strong thickset sire with a fine skin type and heavy bone with a naturally quite nature. At twenty-five months he weighed 962 kgs, DWG 1.28, 41 cm Scrotal, 132 EMA, and a morphology test at 94 %.

200D	400D	600D	Mat. Cow	Milk	SS	Carcass Wt	EMA	Rib	Rump	RBY	IMF (%)
+26	+43	+51	+67	+1	+0.9	+20	+0.7	+0.5	+0.5	-0.8	+0.2
68%	70%	72%	65%	38%	72%	59%	51%	60%	59%	46%	60%

Sire of lots 14,15,39



BENELKAY QUICKSHOT Q058 (PP)

Quickshot was once again used as a yearling bull over stud heifers at Benelkay. Strongly built homozygous sire with a deep dark red skin type and a strong sires outlook. Purchased by Owen Wallace for \$15,000, in the 2021 Benelkay Sale. At twenty – five months he weighed 884 kgs, DWG 1.18, 37cm scrotal, 131 EMA and a morphology at 88%.

200D	400D	600D	Mat. Cow	Milk	SS	Carcass Wt	EMA	Rib	Rump	RBY	IMF (%)
+13	+16	+26	+23	+4	-0.4	+14	+3.4	-0.5	-0.8	+1.0	-0.3
67%	69%	71%	66%	47%	69%	58%	51%	59%	58%	46%	60%

Sire of lots 27,30

BENELKAY QBEC Q072 (PP)

Qbec was again used as a yearling bull over stud heifers at Benelkay. Powerful thickset homozygous sire, typical Yarrowonga M134 son. Unfortunately, he was injured while being joining and was sold. Qbec was very similar in style to Qatar.

200D	400D	600D	Mat. Cow	Milk	SS	Carcass Wt	EMA	Rib	Rump	RBY	IMF (%)
+11	+13	+16	+16	+3	-0.1	+9	-0.1	-1.4	-2.0	+0.1	-0.5
67%	70%	72%	65%	38%	70%	59%	51%	59%	59%	46%	60%

Sire of lots 31,35,48



BENELKAY PAMPAS P018 (P)

Pampas was used over a select few top line Benelkay Stud heifers with pleasing results. He was a stylish dark coated bull with a large muscular top line, displaying good muscling and length with finishing ability typical of the Wave Hill Dapto stock.

200D	400D	600D	Mat. Cow	Milk	SS	Carcass Wt	EMA	Rib	Rump	RBV	IMF (%)
+15	+19	+28	+46	-1	+0.5	+14	+2.4	+0.3	+0.2	+0.8	-0.3
70%	69%	72%	67%	53%	54%	60%	54%	59%	59%	48%	61%

Sire of lots 2,7,45



Available for all your large animal needs



**Gunnedah Saleyards
Veterinary Clinic**

Located at Merralong 1584 Quia Road, Gunnedah 2380



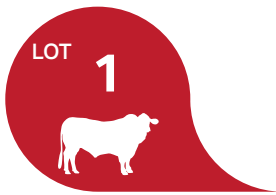
**Gunnedah Saleyards
Veterinary Clinic**

Mark Baker BVSc

Phone: 0427 425 175

Email: admin@saleyardsvet.com.au

PO Box 28, Gunnedah NSW 2380



BENELKAY SOUTHAMPTON S002 (P)

26 Months

S Bull

Id No: BEN21MS002

Tattoo: S002

D.O.B: 1/6/2021



BURRAMURRA BOSS 152 (PP)

FISHINGTON BOBCAT B014 (P)

Sire: BENELKAY NEWMAN N330 (PP)

Dam: BENELKAY G003 (P)

BENELKAY G23 (P)

BENELKAY INDIGO (P)

200D	400D	600D	Mat. Cow	Milk	SS	EMA	Rib	Rump	RBY	IMF (%)
+11	+14	+28	+18	+5	+0.5	+1.7	-0.2	-0.6	+0.7	-0.2
62%	61%	64%	58%	39%	49%	44%	51%	51%	39%	53%

Comments: Southamptton (P), Strong polled head thickset bull, with good length and depth throughout his body. Dam G003 (P) has had four classified progeny, two other sale bulls averaging \$10,000 and one heifer retained in the stud. Grand Dam produced Benelkay Eragon selling to Hardigreen SGS for \$34,000.

Purchaser..... \$.....

BENLKAY SPRINGFIELD S004 (P)

26 Months

S Bull

Id No: BEN21MS004

Tattoo: S004

D.O.B: 1/6/2021

2^{LOT}



WAVE HILL DAPTO D564 (PS)

MACAIRE HALLMARK H37 (P)

Sire: BENLKAY PAMPAS P018 (P)

Dam: BENLKAY P027 (P)

BENLKAY F25 (P)

BENLKAY J147 (P)

200D	400D	600D	Mat. Cow	Milk	SS	EMA	Rib	Rump	RBY	IMF (%)
+18	+27	+30	+43	+3	+0.5	+3.1	+0.4	+0.2	+0.9	-0.2
61%	59%	64%	58%	38%	43%	43%	49%	49%	38%	51%

Comments: Springfield (P), Strong muscle pattern, clean sheathed a real carcass bull, strong width and bone throughout his body. Strong Growth, EMA and positive Rib and Rump Fat EBVS . Dam P027 (P) lovely soft female. Springfield is a heifers calf and she has calved again.

Purchaser:.....\$.....

LOT
3



BENELKAY SHORTLIST S006 (PP)

26 Months

S Bull

Id No: BEN21MS006

Tattoo: S006

D.O.B: 3/6/2021



BURRAMURRA BOSS 152 (PP)

FISHINGTON BOBCAT B014 (P)

Sire: BENELKAY NEWMAN N330 (PP)

Dam: BENELKAY J067 (P)

BENELKAY G23 (P)

BENELKAY F155 (P)

200D	400D	600D	Mat. Cow	Milk	SS	EMA	Rib	Rump	RBY	IMF (%)
+4	+13	+21	+17	-4	+0.2	+4.6	+0.5	+0.3	+1.5	-0.3
62%	60%	65%	58%	39%	47%	44%	50%	50%	39%	52%

Comments: Shortlist (PP), Homozygous poll outstanding stylish, dark coated young Sire. Great shaped bull with a sires outlook. Strong Poll head, he carries plenty of length throughout his body. EMA EBV's above top 5% with good raw data IMF. Dam J067 (P) has had six calves with one heifer retained in the stud and Shortlist as her first sale bull.

Purchaser..... \$.....

BENELKAY STIHL S040 (PS)

25 Months

S Bull

Id No: BEN21MS040

Tattoo: S040

D.O.B: 18/6/2021

4^{LOT}



WACO ZEUS F154

BULLAMAKINKA H82 (PS)

Sire: YARRAWONGA M134 (PS)

Dam: BENELKAY K095 (P)

YARRAWONGA F531

BENELKAY F25 (P)

200D	400D	600D	Mat. Cow	Milk	SS	EMA	Rib	Rump	RBV	IMF (%)
+14	+26	+30	+38	-4	+0.8	+0.9	+0.5	+0.5	-0.3	+0.2
66%	65%	68%	61%	37%	66%	47%	55%	54%	43%	56%

Comments: Stihl (PS), Typical M134 son, thickset with a wide top line and a deep hindquarter. Masculine sires head with strong breed type, heavy bone with good fat cover. Large scrotal with IMF at 5.7 % for his 400 day scan. Dam K095 (P) has had six calves one heifer retained in the stud and Stihl being her first sale bull.

Purchaser:.....\$.....

LOT
5



BENELKAY S038 (PP)

25 Months

Herd Bull

Id No: BEN21MS038

Tattoo: S038

D.O.B: 15/6/2021



BURRAMURRA BOSS 152 (PP)

BENELKAY LEXUS 1524 (PP)

Sire: BENELKAY NEWMAN N330 (PP)

Dam: BENELKAY J222 (P)

BENELKAY G23 (P)

BENELKAY F43 (P)

200D	400D	600D	Mat. Cow	Milk	SS	EMA	Rib	Rump	RBY	IMF (%)
+9	+14	+22	+15	-1	+0.9	+3.5	+0.3	0.0	+1.1	-0.4
62%	61%	65%	58%	40%	47%	44%	50%	50%	39%	52%

Comments: Benelkay S038 (PP), Homozygous poll, powerful commercial bull that carries strong carcass attributes. Wide over the top with depth throughout. Suffered a slight eye injury as a calf but has no trouble seeing out of it now. Dam J222 (P) has had seven calves with two females retained in the stud, S038 (PP) being her first sale bull.

Purchaser..... \$.....

BENELKAY SUPREME S036 (P)

25 Months

S Bull

Id No: BEN21MS036

Tattoo: S036

D.O.B: 14/6/2021

6^{LOT}



BURRAMURRA BOSS 152 (PP)

BULLAMAKINKA H82 (PS)

Sire: BENELKAY NEWMAN N330 (PP)

Dam: BENELKAY K123 (P)

BENELKAY G23 (P)

BENELKAY E153 (P)

200D	400D	600D	Mat. Cow	Milk	SS	EMA	Rib	Rump	RBY	IMF (%)
+8	+8	+13	+5	+2	-0.1	+1.6	+1.8	+2.2	-0.3	0.0
62%	60%	65%	58%	38%	49%	44%	51%	51%	40%	53%

Comments: Supreme (P), Thickset bull with great spring of rib and wide over the top line. Easy finishing ability as expressed in his Rib and Rump Fat EBVS, top 5%. Dam K123 (P), has had five calves, one heifer retained in the stud with Supreme being her first sale bull.

Purchaser:.....\$.....

LOT **7**

BENLKAY SPOTIFY S010 (PS)

26 Months

S Bull

Id No: BEN21MS010

Tattoo: S010

D.O.B: 3/6/2021



WAVE HILL DAPTO D564 (P)

MACAIRE HALLMARK H37 (P)

Sire: BENLKAY PAMPAS P018 (P)

Dam: BENLKAY P025 (P)

BENLKAY F25 (P)

BENLKAY E75 (P)

200D	400D	600D	Mat. Cow	Milk	SS	EMA	Rib	Rump	RBY	IMF (%)
+17	+23	+31	+39	+2	+0.2	+1.4	+0.2	0.0	-0.2	0.0
61%	60%	64%	58%	40%	44%	44%	50%	50%	39%	53%

Comments: Spotify (PS), Upstanding young bull carries a lot of softness and finishing ability, he is a heifers calf that has never looked back. Dam P025 (P), has had two calves with Spotify being her first sale bull.

Purchaser..... \$.....

BENLKAY STARDUST S022 (P)

26 Months

S Bull

Id No: BEN21MS022

Tattoo: S022

D.O.B: 4/6/2021

8^{LOT}



BENLKAY GYRAL G152 (P)

BULLAMAKINKA DREAMTIME D62 (P)

Sire: BENLKAY MISSOURI M056 (PS)

Dam: BENLKAY M153

BENLKAY K085 (P)

BENLKAY 1611 (P)

200D	400D	600D	Mat. Cow	Milk	SS	EMA	Rib	Rump	RBY	IMF (%)
+23	+30	+37	+47	+2	+1.3	+2.8	+0.6	+0.3	+0.2	-0.1
64%	63%	67%	61%	41%	50%	46%	52%	52%	42%	54%

Comments: Stardust (P), Appealing Sire style of great shape, easy finishing ability, good outlook with a strong muscle pattern, perfect sheath fantastic constitution. Growth EBVS top 5%. Dam M153 an attractive front paddock cow has had four calves with Stardust being her first sale bull.

Purchaser:.....\$.....

LOT
9



BENELKAY SAMSON S234 (P)

22 Months

S Bull

Id No: BEN21MS234

Tattoo: S234

D.O.B: 4/10/2021



WACO CHEVRON H1305 (P)

EIDSVOLD STATION GAVIN G2 (P)

Sire: BURRAMURRA BOSS 152 (PP)

Dam: BENELKAY J169 (P)

KULOOMBA 265 (P)

BENELKAY G133 (P)

200D	400D	600D	Mat. Cow	Milk	SS	EMA	Rib	Rump	RBY	IMF (%)
+16	+23	+36	+38		+0.3	+4.6	-1.2	-1.8	+1.9	-0.6
65%	64%	67%	59%		67%	45%	53%	53%	41%	54%

Comments: Samson (P), Impressive young bull with a real Sires outlook. Strong Poll head, eye catching young bull with scale who carries plenty of width, top 5% EMA EBV and length throughout his carcass. Dam J169 (P) Has had one heifer retained within the stud and Samson being her first sale bull.

Purchaser..... \$.....



ProTect C

ProAgni ProTect

ProAgni® ProTect C pellet is designed to be fed with cereal grain supplements for use in feedlot and drought lots, supplementary feeding or weaning. Adding ProTect C to an animal's diet has the potential to increase growth rates and decreases the time it takes to reach market specifications.

Why use ProTect C?

- ✓ Provides buffering against lactic acidosis
- ✓ Helps livestock reach genetic potential for increased production
- ✓ Meets increasing demand for antibiotic free meat (antibiotic & ionophore free)
- ✓ Reduces methane
- ✓ Trialled and proven to reduce Feed Conversion Ratios

FOR MORE INFO

Isobel Thomson - 0457 755 105
www.proagni.com



25 kg



LOT **10**



BENELKAY SPORTRADER S212 (PP)

22 Months

S Bull

Id No: BEN21MS212

Tattoo: S212

D.O.B: 27/9/2021



WACO CHEVRON H1305 (P)

BULLAMAKINKA DREAMTIME D62 (P)

Sire: BURRAMURRA BOSS 152 (PP)

Dam: BENELKAY J211 (P)

KULOOMBA 265 (P)

BENELKAY 1623 (P)

200D	400D	600D	Mat. Cow	Milk	SS	EMA	Rib	Rump	RBY	IMF (%)
+8	+4	+18	+10	+2	0.0	+1.0	-0.4	-0.8	+0.5	-0.2
67%	66%	68%	61%	39%	68%	47%	55%	54%	42%	56%

Comments: Sportrader (PP), Homozygous poll with plenty of scale, naturally placid nature, dark coated with a neat sheath. Dam J211 (P) has had six calves with one other sale bull Narramine selling in 2019 for \$8,000 to Oakdale QLD.

Purchaser..... \$.....

BENLKAY SUPERVALUE S222 (P)

22 Months

S Bull

Id No: BEN21MS222

Tattoo: S222

D.O.B: 14/9/2021

11^{LOT}



WACO CHEVRON H1305 (P)

FISHINGTON BOBCAT B014 (P)

Sire: BURRAMURRA BOSS 152 (PP)

Dam: BENLKAY J003 (P)

KULOOMBA 265 (P)

BENLKAY 999 HYDRAULIC

200D	400D	600D	Mat. Cow	Milk	SS	EMA	Rib	Rump	RBY	IMF (%)
+9	+8	+14	+17	+1	+0.2	+2.1	+0.2	+0.2	+0.4	+0.2
67%	66%	69%	62%	39%	68%	47%	55%	54%	42%	55%

Comments: Supervalu (P), A young Sire I have always admired since he was a calf, mid maturity bull with plenty of finishing ability, displaying strong breed character with length and depth of body. Dam J003 (P), has had seven calves two females retained in the stud and one Sire retained, Benelkay Mojo (P) then Supervalu.

Purchaser:.....\$.....

LOT **12**

BENLKAY SOVEREIGN S062 (P)

25 Months

S Bull

Id No: BEN21MS062

Tattoo: S062

D.O.B: 18/6/2021



DANGARFIELD YOUNG GUN Y264 (PS)

BENLKAY GYRAL G152 (P)

Sire: BENLKAY QUILPIE Q002 (P)

Dam: BENLKAY Q057 (P)

BENLKAY J027 (P)

BENLKAY L003 (P)

200D	400D	600D	Mat. Cow	Milk	SS	EMA	Rib	Rump	RBY	IMF (%)
+7	+16	+16	+19		-0.2	+1.9	-1.0	-1.3	+0.9	-0.3
56%	59%	63%	54%		64%	42%	50%	49%	38%	51%

Comments: Sovereign (P), A quicker maturity style of bull with good spring of rib, width over the top and length, nice light sheath. Dam Q057 (P) was a heifer when she had Sovereign and she has weaned a T heifer calf.

Purchaser..... \$.....

BENELKAY SUPERMAN S206 (PP)

23 Months

S Bull

Id No: BEN21MS206

Tattoo: S206

D.O.B: 7/9/2021

13^{LOT}



WACO CHEVRON H1305 (P)

BULLAMAKINKA H82 (PS)

Sire: BURRAMURRA BOSS 152 (PP)

Dam: BENELKAY K077 (P)

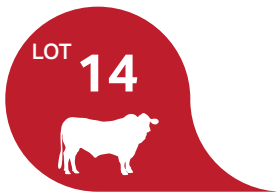
KULOOMBA 265 (P)

BENELKAY F147 (P)

200D	400D	600D	Mat. Cow	Milk	SS	EMA	Rib	Rump	RBY	IMF (%)
+15	+9	+21	+22	+1	-1.4	+3.2	+0.2	+0.2	+1.0	-0.2
66%	65%	68%	60%	36%	68%	47%	55%	54%	42%	55%

Comments: Superman (PP), Homozygous poll dark coated Sire with a strong poll head, eye catching outlook with great length. Carries good finishing ability as displayed in his positive Rib and Rump Fat EBVS. Dam K077 (P) has had six calves, one female M205(P) breeding well in the stud (dam of lot 40) and one other sale bull Reproduce R056 (P) who sold to Widden for \$12,000 the 2022 sale.

Purchaser:.....\$.....



BENELKAY SALVADOR S146 (PP)

24 Months **S Bull**

Id No: BEN21MS146 Tattoo: S146 D.O.B: 20/7/2021



YARRAWONGA M134 (PS)

BURRAMURRA BOSS 152 (PP)

Sire: BENELKAY QATAR Q076 (PS)
BENELKAY J105 (P)

Dam: BENELKAY Q047 (P)
BENELKAY J047

200D	400D	600D	Mat. Cow	Milk	SS	EMA	Rib	Rump	RBY	IMF (%)
+13	+20	+28	+39		+0.1	+0.6	+0.9	+0.9	-0.4	+0.2
57%	59%	63%	55%		64%	42%	50%	50%	38%	52%

Comments: Salvador (PP), Homozygous poll, heifers calf. Soft tropical skinned dark coated young bull. Carries nice thickness and finishing ability. Interesting bull as he develops he has been getting better, he has a real presence about him. Dam Q047 (P) has just weaned her second calf.

Purchaser..... \$.....

BENELKAY SHOTGUN S080 (PP)

25 Months

S Bull

Id No: BEN21MS080

Tattoo: S080

D.O.B: 19/6/2021

15^{LOT}



YARRAWONGA M134 (PS)

BENELKAY MOJO M226 (PP)

Sire: BENELKAY QATAR Q076 (PS)

Dam: BENELKAY Q097 (P)

BENELKAY J105 (P)

BENELKAY M195 (P)

200D	400D	600D	Mat. Cow	Milk	SS	EMA	Rib	Rump	RBY	IMF (%)
+24	+40	+48	+62		+1.8	+3.3	0.0	-0.4	+0.7	-0.1
55%	58%	62%	54%		64%	41%	50%	49%	37%	51%

Comments: Shotgun (PP), Homozygous poll, heifers calf. Easy finishing bull that carries softness and growth. Top 5% for all his Growth EBVS. High IMF %. A well bred bull in our herd with a very strong female line. Dam Q097 (P) has had two calves and has just weaned a T heifer.

Purchaser:.....\$.....

LOT
16



BENLKAY SPORTSCAR S050 (PP)

25 Months

S Bull

Id No: BEN21MS050

Tattoo: S050

D.O.B: 23/6/2021



BURRAMURRA BOSS 152 (PP)

SUJO FIRST CLASS 366 (P)

Sire: BENLKAY NEWMAN N330 (PP)

Dam: BENLKAY J009

BENLKAY G23 (P)

BENLKAY 938

200D	400D	600D	Mat. Cow	Milk	SS	EMA	Rib	Rump	RBY	IMF (%)
+6	+2	+4	-5	0	-0.3	+2.4	-0.6	-0.9	+1.1	-0.5
62%	61%	65%	59%	41%	64%	45%	52%	51%	41%	53%

Comments: Sportscar (PP), Homozygous poll, very dark coated quicker maturing moderate style of bull with good spring of rib and width. J009 eight calves, one heifer retained within the stud and two other sale bulls and Sportscar.

Purchaser..... \$.....

WFI, good people to know for farm and business insurance.

Insurance: ✓ Farm ✓ Business ✓ Strata ✓ Home and Car

Insure with WFI and you'll deal directly with a local area manager who will take the time to understand you and your insurance needs. So, for personal service that comes to you, contact your local WFI Area Manager.

**Phone 1300 934 934
or visit wfi.com.au**

Good people to know.



To see if our products are right for you, always read the PDS from the product issuer, Insurance Australia Limited (ABN 11 000 036 279 AFSL 227681) trading as WFI (WFI). Insurance issued by Insurance Australia Limited (ABN 11 000 016 722 AFSL 227681 trading as WFI (WFI). This is general advice only and does not take into account your individual objectives, financial situation or needs ("your personal circumstances"). Before using this advice to decide whether to purchase a product, you should consider your personal circumstances and the relevant Product Disclosure Statement and Target Market Determinations available from wfi.com.au

LOT 17



BENELKAY SONY S238 (PP)

20 Months

S Bull

Id No: BEN21MS238

Tattoo: S238

D.O.B: 20/11/2021



YARRABEE DUKE 1201 (P)

BENELKAY HALFBACK H076 (PP)

Sire: YARRABEE INFORCE 1459 (P)

Dam: BENELKAY M051 (P)

YARRABEE CARLA 6091

BENELKAY F29 (P)

200D	400D	600D	Mat. Cow	Milk	SS	EMA	Rib	Rump	RBY	IMF (%)
+20	+26	+41	+45		+1.2	+3.8	-0.2	-0.7	+1.3	-0.4
57%	58%	63%	54%		63%	42%	49%	49%	38%	51%

Comments: Sony (PP), Homozygous poll, the first son offered by Yarrabee Inforce(P). Thick set young bull with a lot of power in him, good bone, strong EBVS for Growth and EMA. Dam M051 (P), has had three calves with Sony being her first sale bull.

Purchaser..... \$.....

BENLKAY STOCKHOLM S138 (P)

26 Months

S Bull

Id No: BEN21MS138

Tattoo: S138

D.O.B: 11/6/2021

18^{LOT}



DANGARFIELD YOUNG GUN Y264 (PS)

DANGARFIELD YOUNG GUN Y264 (PS)

Sire: BENLKAY QUILPIE Q002 (P)

Dam: BENLKAY Q005 (P)

BENLKAY J027 (P)

BENLKAY JANA 1511

200D	400D	600D	Mat. Cow	Milk	SS	EMA	Rib	Rump	RBY	IMF (%)
+2	+6	+6	+12	+3	-0.1	+0.1	0.0	0.0	+0.2	-0.1
57%	60%	64%	55%	35%	50%	43%	51%	50%	39%	52%

Comments: Stockholm (P), a heifers calf but has not let that stop him from developing nicely. Good length as well as strong spring of rib and wide over the top line. Dam Q005(P) has had two calves and just weaned a T heifer.

Purchaser:.....\$.....

LOT **19**



BENELKAY SHOWTIME S204 (P)

22 Months

S Bull

Id No: BEN21MS204

Tattoo: S204

D.O.B: 19/9/2021



WACO CHEVRON H1305 (P)

BULLAMAKINKA H82 (PS)

Sire: BURRAMURRA BOSS 152 (PP)

Dam: BENELKAY L195

KULOOMBA 265 (P)

BENELKAY E175

200D	400D	600D	Mat. Cow	Milk	SS	EMA	Rib	Rump	RBY	IMF (%)
+12	+11	+20	+13	0	-0.1	+3.7	+0.6	+0.4	+0.8	0.0
67%	66%	69%	62%	37%	69%	47%	55%	55%	43%	56%

Comments: Showtime (P), very nice son of Boss (PP), well balanced free moving stylish bull with good length and bone, positive Rib and Rump Fat EBVS. Slightly later maturity pattern, he will develop into a large volume bull when he matures. Dam L195 has had five calves one daughter retained within the stud and one other sale bull Recommend (P) selling to Yarrawonga in 2022 for \$22,000.

Purchaser..... \$.....

BENELKAY SMOKIE S208 (PP)

23 Months

S Bull

Id No: BEN21MS208

Tattoo: S208

D.O.B: 3/9/2021

20^{LOT}



RESTDOWN 378 (P)

BULLAMAKINKA DREAMTIME D62 (P)

Sire: YARRAWONGA QUICKSILVER Q680 (PP) **Dam:** BENELKAY F151 (P)

WACO J793

BENELKAY 1677 (P)

200D	400D	600D	Mat. Cow	Milk	SS	EMA	Rib	Rump	RBY	IMF (%)
+13	+22	+33	+35	-2	+0.3	+3.6	-0.3	-0.8	+0.9	-0.3
59%	58%	62%	55%	38%	64%	42%	49%	49%	38%	51%

Comments: Smokie (PP), Homozygous poll, the first son offered by Yarrowonga Quicksilver (PP). Well balanced big upstanding polled bull with good length. Dam F151 (P) has had ten calves, eight recorded. Smokie is her first sale bull.

Purchaser:.....\$.....

LOT
21



BENLKAY SUPERIOR S226 (P)

21 Months

S Bull

Id No: BEN21MS226

Tattoo: S226

D.O.B: 2/11/2021



BURRAMURRA BOSS 152 (PP)

FISHINGTON BOBCAT B014 (P)

Sire: BENLKAY NEWMAN N330 (PP)

Dam: BENLKAY J055 (P)

BENLKAY G23 (P)

BENLKAY F51 (P)

200D	400D	600D	Mat. Cow	Milk	SS	EMA	Rib	Rump	RBY	IMF (%)
+2	0	+6	-7	-2	+0.9	+3.9	0.0	-0.5	+1.5	-0.2
58%	56%	57%	54%	38%	49%	41%	44%	44%	35%	45%

Comments: Superior (P), Typical Newman son strong spring of rib, width over the top line and long, making him a real carcass bull. Will breed great steers with thickness crossed over any breed. Dam J055 (P) has had six recorded calves with Superior being her first sale bull.

Purchaser..... \$.....

BENELKAY SATISFYING S224 (PP)

22 Months

S Bull

Id No: BEN21MS224

Tattoo: S224

D.O.B: 6/10/2021

22^{LOT}



WACO CHEVRON H1305 (P)

WIGHTFIELDS ZINZAN F69 (PS)

Sire: BURRAMURRA BOSS 152 (PP)

Dam: BENELKAY H069 (P)

KULOOMBA 265 (P)

BENELKAY LIBERTY 1843 (P)

200D	400D	600D	Mat. Cow	Milk	SS	EMA	Rib	Rump	RBY	IMF (%)
+7	+8	+14	+12	0	+0.2	+2.0	-0.7	-1.1	+0.5	0.0
66%	65%	68%	61%	38%	67%	47%	54%	54%	42%	55%

Comments: Satisfying S224 (PP) Homozygous poll, upstanding dark coated stylish Boss son, lots of growth in this young bull with heavy bone and a fine tropical skin type. Dam H069 (P) has had eight calves with Satisfying being her first sale bull.

Purchaser:.....\$.....

LOT **23**



BENELKAY STRAY CAT S124 (P)

25 Months

S Bull

Id No: BEN21MS124

Tattoo: S124

D.O.B: 8/6/2021



WACO CHEVRON H1305 (P)

BULLAMAKINKA DREAMTIME D62 (P)

Sire: BURRAMURRA BOSS 152 (PP)

Dam: BENELKAY H087

KULOOMBA 265 (P)

BENELKAY 1025 HATTIE (P)

200D	400D	600D	Mat. Cow	Milk	SS	EMA	Rib	Rump	RBY	IMF (%)
+7	+7	+16	+22	+2	-0.3	+1.7	+0.9	+0.6	+0.3	+0.2
68%	66%	69%	63%	40%	58%	48%	56%	55%	43%	57%

Comments: Stray Cat (P) Later maturing Boss son that could be the sleeper in the sale, very correct with a lot of growth. Dam H087 (P) is a front paddock cow that carries strong phenotype, has had six recorded calves, one heifer retained in the stud. She produced Quartermaster (P) who sold to Hallcraig Stud in 2021 for \$30,000 topping the sale, was a full brother to Stray Cat and she has just weaned a standout T heifer buy Boss.

Purchaser..... \$.....



AMPS Commercial Pty Ltd

Suppliers of

- AGRICULTURE RESEARCH
- GENERAL MERCHANDISE
- ANIMAL HEALTH
- CROP PROTECTION
- AGRONOMY
- SEED & FERTILISER
- FENCING SUPPLIES
- GULF WESTERN OILS
- LICK BLOCKS & SUPPLEMENTS
- TANKS & TROUGHS
- CENTURY BATTERIES

“Changing The Way We Farm”

AMPS Moree 02 6752 9001 AMPS Armatree 02 6848 5951 AMPS Walgett 02 68281025

AMPS Tamworth 02 6762 2677 AMPS Waverley 02 67474988 AMPS Gunnedah 02 67414900

LOT **24**


BENELKAY SHOWMAN S214 (PP)

21 Months

S Bull

Id No: BEN21MS214

Tattoo: S214

D.O.B: 24/10/2021



WACO CHEVRON H1305 (P)

BENELKAY LEXUS 1524 (PP)

Sire: BURRAMURRA BOSS 152 (PP)

Dam: BENELKAY K027 (P)

KULOOMBA 265 (P)

BENELKAY KAELYN (P)

200D	400D	600D	Mat. Cow	Milk	SS	EMA	Rib	Rump	RBY	IMF (%)
+16	+18	+31	+21	+3	+1.5	+4.4	0.0	-0.5	+1.3	-0.3
63%	63%	66%	59%	37%	64%	45%	52%	52%	40%	53%

Comments: Showman (PP), Homozygous poll dark coated bull that has plenty of growth and length very similar style to Boss himself. Dam K027 (P) is from a strong female line of cows. Has had five calves, one daughter retained in the stud (dam of lot 28, Q037). Showman is her first sale bull.

Purchaser..... \$.....

BENELKAY SCARBOROUGH S154 (PP)

24 Months

S Bull

Id No: BEN21MS154

Tattoo: S154

D.O.B: 24/8/2021

25^{LOT}



WACO CHEVRON H1305 (P)

SUJO FIRST CLASS 366 (P)

Sire: BURRAMURRA BOSS 152 (PP)

Dam: BENELKAY H113 (P)

KULOOMBA 265 (P)

BENELKAY 1269 (P)

200D	400D	600D	Mat. Cow	Milk	SS	EMA	Rib	Rump	RBY	IMF (%)
+4	-2	+8	-10	+4	-0.4	+2.0	+1.0	+0.9	+0.1	+0.2
63%	61%	62%	57%	39%	58%	44%	49%	49%	39%	49%

Comments: Scarborough (PP), Homozygous poll with strong breed phenotype, positive Rib and Rump Fat EBVS. He is a twin to a heifer that his dam reared unassisted. I believe he would be suitable for use over heifers. Dam H113 (P) has had seven calves, five sale bulls including Scarborough (PP). Her most notable was Regulator R048 (P) selling to Wylie Creek in 2022 for \$26,000 in 2022.

Purchaser:.....\$.....

LOT
26



BENLKAY SANTANA S066 (P)

25 Months

S Bull

Id No: BEN21MS066

Tattoo: S066

D.O.B: 19/6/2021



BENLKAY GYRAL G152 (P)

DANGARFIELD YOUNG GUN Y264 (PS)

Sire: BENLKAY MISSOURI M056 (PS)

Dam: BENLKAY Q011 (P)

BENLKAY K085 (P)

BENLKAY J085 (P)

200D	400D	600D	Mat. Cow	Milk	SS	EMA	Rib	Rump	RBV	IMF (%)
+10	+7	+6	+16	+5	+0.3	+0.8	+0.6	+0.3	0.0	+0.2
60%	62%	66%	58%	35%	66%	45%	52%	52%	40%	54%

Comments: Santana (P), Heifers calf ,dark coated bull with good width over the top and finishing ability reflected in his positive Rib and Rump EBVS. Strong Dangarfield breeding within his pedigree. Dam Q011 (P) two calves Santana is her first sale bull.

Purchaser..... \$.....

BENLKAY SPECTRE S060 (PP)

25 Months

S Bull

Id No: BEN21MS060

Tattoo: S060

D.O.B: 14/6/2021

27^{LOT}



BENLKAY HOT SHOT H074 (PP)

BENLKAY GYRAL G152 (P)

Sire: BENLKAY QUICKSHOT Q058 (PP) Dam: BENLKAY Q029 (P)

BENLKAY K043 (P)

BENLKAY J169 (P)

200D	400D	600D	Mat. Cow	Milk	SS	EMA	Rib	Rump	RBY	IMF (%)
+19	+32	+45	+50	+4	0.0	+3.3	-0.7	-1.1	+0.9	-0.3
57%	59%	63%	55%	35%	47%	43%	50%	50%	38%	52%

Comments: Spectre (PP), Homozygous poll with strong breed phenotype, strong upstanding bull, very dark in colour, top 10% for all his growth EBVS. Strong raw data IMF. Great constitution for a heifers calf. Grand dam (J169 (P) mother of lot 9). Dam Q029 (P) two calves Spectre being her first sale bull.

Purchaser:.....\$.....

LOT 28



BENLKAY STATUS QUO S108 (PS)

24 Months

S Bull

Id No: BEN21MS108

Tattoo: S108

D.O.B: 9/7/2021



DANGARFIELD YOUNG GUN Y264 (PS)

BENLKAY GYRAL G152 (P)

Sire: BENLKAY QUILPIE Q002 (P)

Dam: BENLKAY Q037 (P)

BENLKAY J027 (P)

BENLKAY K027 (P)

200D	400D	600D	Mat. Cow	Milk	SS	EMA	Rib	Rump	RBY	IMF (%)
+7	+19	+22	+18		0.0	+2.2	-0.4	-0.7	+0.6	-0.3
56%	59%	63%	54%		64%	42%	50%	49%	38%	51%

Comments: Status Quo (PS), Heifers calf, extra length of body with a strong top line. Grand dam (K027 (P) mother of lot 24). Dam Q037 (P) attractive cow with frame, has had two calves. Status Quo and an outstanding weaned bull T334 (P).

Purchaser..... \$.....

BENELKAY SOUTHPORT S216 (P)

22 Months

S Bull

Id No: BEN21MS216

Tattoo: S216

D.O.B: 26/9/2021

29^{LOT}



WACO CHEVRON H1305 (P)

SUJO FIRST CLASS 366 (P)

Sire: BURRAMURRA BOSS 152 (PP)

Dam: BENELKAY F133 (P)

KULOOMBA 265 (P)

BENELKAY 1159 (P)

200D	400D	600D	Mat. Cow	Milk	SS	EMA	Rib	Rump	RBY	IMF (%)
+7	+7	+15	+6	+2	+0.6	+3.4	-0.3	-0.9	+1.2	-0.1
67%	66%	69%	61%	40%	69%	48%	56%	55%	44%	57%

Comments: Southport (P), Plenty to like about this bull, dark coated polled sire with strong growth for age and width over the top. Dam F133 (P) has had eight calves with six recorded. Southport is her second sale bull, with the other bull being Quojem (PP) selling to Calonbah SGS in 2021.

Purchaser:.....\$.....

LOT **30**

BENLKAY STONEHENGE S072 (PS)

25 Months

S Bull

Id No: BEN21MS072

Tattoo: S072

D.O.B: 21/6/2021



BENLKAY HOT SHOT H074 (PP)

BENLKAY MOJO M226 (PP)

Sire: BENLKAY QUICKSHOT Q058 (PP) Dam: BENLKAY Q089 (P)

BENLKAY K043 (P)


Benelkay M147 (P)

200D	400D	600D	Mat. Cow	Milk	SS	EMA	Rib	Rump	RBV	IMF (%)
+12	+18	+25	+28		-0.3	+3.1	-0.6	-1.0	+1.1	-0.5
56%	59%	63%	55%		64%	42%	50%	49%	38%	52%

Comments: Stonehenge (PS), Heifers calf, dark coated Quickshot (PP) son, breeders recommendation for use on heifers. Dam Q089, has had two calves Stonehenge being her first sale bull.

Purchaser..... \$.....

LOT **31**



BENELKAY STEADFAST S076 (PP)

26 Months

S Bull

Id No: BEN21MS076

Tattoo: S076

D.O.B: 17/6/2021



YARRAWONGA M134 (PS)

BENELKAY GYRAL G152 (P)

Sire: BENELKAY QBEX Q072 (PP)

Dam: BENELKAY Q033 (P)

BENELKAY H071 (P)

BENELKAY L031 (P)

200D	400D	600D	Mat. Cow	Milk	SS	EMA	Rib	Rump	RBY	IMF (%)
+17	+24	+35	+51		+0.3	+0.5	-1.1	-1.7	+0.3	-0.4
57%	60%	64%	56%		49%	43%	51%	51%	39%	53%

Comments: Steadfast (PP), Homozygous poll, heifers calf, big upstanding bull with plenty of growth for age, standing on heavy bone. Will have plenty of scale and volume about him when he matures. He comes from a long line of cows that are all very fertile large animals top 1 % for Mature Cow Weight for three generations. Dam Q033 (P) has had two calves with Steadfast her first sale bull.

Purchaser..... \$.....

BENELKAY SPLENDID S134 (P)

26 Months

S Bull

Id No: BEN21MS134

Tattoo: S134

D.O.B: 14/6/2021

32^{LOT}



WACO CHEVRON H1305 (P)

WAVE HILL DAPTO D564 (P)

Sire: BURRAMURRA BOSS 152 (PP)

Dam: BENELKAY H027 (P)

KULOOMBA 265 (P)

BENELKAY E77 (P)

200D	400D	600D	Mat. Cow	Milk	SS	EMA	Rib	Rump	RBY	IMF (%)
+11	+11	+29	+33	-1	+0.6	+2.5	-0.4	-1.2	+1.1	-0.1
67%	66%	69%	62%	38%	56%	47%	55%	54%	42%	56%

Comments: Splendid (P), Very dark coated bull with good growth and length. Dam H027 (P) has had six calves before being sold. She has had one heifer retained in the stud and four sale bulls. The most notable to date is Lonewolf (P) selling to Strathmore SGS.

Purchaser:.....\$.....

LOT **33**



BENELKAY SHERBET S120 (PP)

25 Months

S Bull

Id No: BEN21MS120

Tattoo: S120

D.O.B: 28/6/2021



WACO CHEVRON H1305 (P)

BULLAMAKINKA DREAMTIME D62 (P)

Sire: BURRAMURRA BOSS 152 (PP)

Dam: BENELKAY J131 (P)

KULOOMBA 265 (P)

BENELKAY LAPIS (P)

200D	400D	600D	Mat. Cow	Milk	SS	EMA	Rib	Rump	RBY	IMF (%)
+10	+12	+23	+24	+4	+0.3	+2.5	0.0	-0.4	+0.7	0.0
67%	66%	68%	62%	37%	66%	48%	55%	55%	43%	56%

Comments: Sherbet (PP), Homozygous poll, very tropical style bull that has thrown more to the Bullamakinka Dreamtime side of his pedigree with good growth and length. Dam J131 (P) has had five calves before being sold. One other sale bull selling to Knapmans in 2020 for \$5,000 then Sherbet.

Purchaser..... \$.....

BENELKAY SUPERNOVA S130 (P)

26 Months

S Bull

Id No: BEN21MS130

Tattoo: S130

D.O.B: 12/6/2021

34^{LOT}



WACO CHEVRON H1305 (P)

BULLAMAKINKA H82 (PS)

Sire: BURRAMURRA BOSS 152 (PP)

Dam: BENELKAY K115 (P)

KULOOMBA 265 (P)


BENELKAY F117 (P)

200D	400D	600D	Mat. Cow	Milk	SS	EMA	Rib	Rump	RBV	IMF (%)
+8	0	+6	-5	-3	+0.5	+2.3	+0.8	+0.5	+0.7	+0.1
67%	66%	69%	62%	38%	57%	47%	55%	55%	42%	56%

Comments: Supernova (P), Strong Sires presence, tropical dark skin, has a nervous disposition when put under pressure, but is a very attractive bull with a lot of positives about him. Dam K115 has had six calves one female retained within the stud, and one other sale bull Rock Star (P) sell in 2022 for \$18,000 to Fort Cooper Nebo QLD.

Purchaser:.....\$.....

LOT **35**



BENELKAY SKY TOWER S070 (PP)

25 Months

S Bull

Id No: BEN21MS070

Tattoo: S070

D.O.B: 20/6/2021



YARRAWONGA M134 (PS)

BURRAMURRA BOSS 152 (PP)

Sire: BENELKAY QBEX Q072 (PP)

Dam: BENELKAY Q013 (P)

BENELKAY H071 (P)

BENELKAY G57 (P)

200D	400D	600D	Mat. Cow	Milk	SS	EMA	Rib	Rump	RBY	IMF (%)
+12	+12	+21	+22		-0.8	+1.7	-1.5	-2.0	+0.8	-0.5
57%	59%	63%	55%		64%	43%	51%	50%	38%	52%

Comments: Sky Tower (PP), Homozygous poll, impressive heifers calf, with heavy bone and scale, will develop into a big mature bull. Strong breed phenotype. Q013 (P) has had Sky Tower and weaned one other calf.

Purchaser..... \$.....

BENLKAY SCHOONER S160 (PP)

20 Months

S Bull

Id No: BEN21MS160

Tattoo: S160

D.O.B: 17/11/2021

36^{LOT}



WACO CHEVRON H1305 (P)

BENLKAY KLUGER 1380 (P)

Sire: BURRAMURRA BOSS 152 (PP)

Dam: BENLKAY H091 (P)

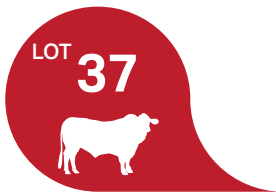
KULOOMBA 265 (P)

BENLKAY E45 (PS)

200D	400D	600D	Mat. Cow	Milk	SS	EMA	Rib	Rump	RBV	IMF (%)
+11	+6	+18	+12	-1	-0.1	+3.1	+0.4	+0.3	+1.1	-0.3
64%	65%	68%	61%	37%	68%	47%	55%	55%	42%	56%

Comments: Schooner (PP), Homozygous poll, there is a lot to like about this young animal, great shaped bull, soft with good length and thickness, desirable light sheath. Naturally docile temperament. Dam H091 (P) has had seven calves, three sale bulls including Schooner. Her last Rufus selling to Linsey O'Brian in 2022 for \$7,000.

Purchaser:.....\$.....



BENELKAY SUCCEED S264 (P)

20 Months

S Bull

Id No: BEN21MS264

Tattoo: S264

D.O.B: 26/11/2021



RESTDOWN 378 (P)

BENELKAY GYRAL G152 (P)

Sire: YARRAWONGA QUICKSILVER Q680 (PP)

Dam: BENELKAY N043 (P)

WACO J793

BENELKAY E9

200D	400D	600D	Mat. Cow	Milk	SS	EMA	Rib	Rump	RBY	IMF (%)
+4	+11	+12	+9		0.0	+0.8	-0.9	-1.7	+0.2	-0.1
55%	56%	61%	52%		63%	40%	48%	48%	36%	50%

Comments: Succeed (P), Young Yarrowonga Quicksilver son that would be recommended to use over heifers. Dam N043(P) has had one heifer retained in the stud herd then Succeed, then unfortunately died.

Purchaser..... \$.....

Hunt Ag Solutions



Your Agronomy specialist: Jim Hunt
58 Stock Road Gunnedah 2380
MOB 0429 721 367

LOT **38**



BENLKAY SUPERFORMANCE S054 (PS)

25 Months

S Bull

Id No: BEN21MS054

Tattoo: S054

D.O.B: 14/6/2021



DANGARFIELD YOUNG GUN Y264 (PS)

MACAIRE HALLMARK H37 (P)

Sire: BENLKAY QUILPIE Q002 (P)

Dam: BENLKAY P047 (P)

BENLKAY J027 (P)

BENLKAY J049 (P)

200D	400D	600D	Mat. Cow	Milk	SS	EMA	Rib	Rump	RBY	IMF (%)
0	+6	+4	+25		-0.7	+0.4	-1.2	-1.6	+0.8	-0.5
56%	58%	63%	54%		48%	42%	50%	49%	38%	51%

Comments: Superformance (PS), Eye-catching dark coated young bull. Heifers calf. Breeders recommendation for use over heifers. Dam P047 (P) has had Superformance and weaned a good T heifer.

Purchaser..... \$.....

BENELKAY STOCKPORT S148 (P)

24 Months

S Bull

Id No: BEN21MS148

Tattoo: S148

D.O.B: 22/7/2021

39^{LOT}



YARRAWONGA M134 (PS)

YARRAWONGA M134 (PS)

Sire: BENELKAY QATAR Q076 (PS)

Dam: BENELKAY Q077

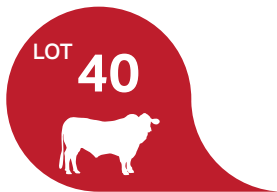
BENELKAY J105 (P)

BENELKAY J013

200D	400D	600D	Mat. Cow	Milk	SS	EMA	Rib	Rump	RBY	IMF (%)
+11	+15	+18	+24		-0.5	-0.7	+0.8	+0.9	-0.7	+0.1
58%	61%	64%	56%		66%	44%	52%	51%	39%	53%

Comments: Stockport (P), Heifers calf. Quality young growthy bull that carries plenty of length with strong bone and breed type. Dam Q077 (P) has had two calves Stockport and weaned a T heifer.

Purchaser:.....\$.....



BENELKAY SPUNK S260 (PS)

21 Months

S Bull

Id No: BEN21MS260

Tattoo: S260

D.O.B: 14/11/2021



WACO ZEUS F154

Sire: YARRAWONGA M134 (PS)

YARRAWONGA F531

BENELKAY HOT SHOT H074 (PP)

Dam: BENELKAY L111 (P)

BENELKAY JILLEROO 1439 (P)

200D	400D	600D	Mat. Cow	Milk	SS	EMA	Rib	Rump	RBY	IMF (%)
+17	+24	+29	+44	+4	-0.7	-0.9	-1.1	-1.3	-0.8	0.0
63%	64%	67%	60%	36%	67%	47%	54%	54%	42%	55%

Comments: Spunk (PS), Young Yarrowonga M134 son, soft style of bull with good growth for age EBV top 15% for growth. Dam L111(P) has had three recorded calves with one other sale bull selling to the Hood family for \$6,000 in 2019.

Purchaser..... \$.....

BENELKAY SOHO S250 (PP)

20 Months

S Bull

Id No: BEN21MS250

Tattoo: S250

D.O.B: 20/12/2021

41^{LOT}



WACO ZEUS F154

Sire: YARRAWONGA M134 (PS)

YARRAWONGA F531

BENELKAY LEXUS 1524 (PP)

Dam: BENELKAY K087 (P)

BENELKAY KALINDA (P)

200D	400D	600D	Mat. Cow	Milk	SS	EMA	Rib	Rump	RBY	IMF (%)
+20	+34	+39	+46	+5	+0.5	+1.3	+0.1	-0.2	-0.3	+0.2
64%	65%	68%	61%	39%	68%	47%	55%	55%	42%	56%

Comments: Soho (PP), Homozygous poll, young bull with plenty of style and thickness typical of the Yarrowonga M134 bulls. Dam K087 (P) has had six calves, two sale bulls. Soho and one other sale bull selling to Pleavy for \$8,000.

Purchaser:.....\$.....

LOT
42



BENELKAY SORCERY S272 (PP)

20 Months

S Bull

Id No: BEN21MS272

Tattoo: S272

D.O.B: 17/11/2021



YARRABEE DUKE 1201 (P)

SUJO FIRST CLASS 366 (P)

Sire: YARRABEE INFORCE 1459 (P)

Dam: BENELKAY J127 (P)

YARRABEE CARLA 6091

BENELKAY IDA 1181 (P)

200D	400D	600D	Mat. Cow	Milk	SS	EMA	Rib	Rump	RBY	IMF (%)
+6	+7	+13	+3	+5	+0.7	+2.9	+0.7	+0.5	+1.0	-0.3
60%	61%	65%	58%	44%	64%	45%	51%	50%	40%	52%

Comments: Sorcery (PP), Homozygous poll nice style of young bull, good spring of rib with strong thickness over his top line. Dam J127 (P) has had eight calves with two sale bulls. Sorcery and Quicksand selling to Grassbrook for \$14,000 in 2021.

Purchaser..... \$.....

BENELKAY S132 (PP)

26 Months

Herd Bull

Id No: BEN21MS132

Tattoo: S132

D.O.B: 4/6/2021

43^{LOT}



WACO CHEVRON H1305 (P)

WIGHTFIELDS ZINZAN F69 (PS)

Sire: BURRAMURRA BOSS 152 (PP)

Dam: BENELKAY H071 (P)

KULOOMBA 265 (P)

BENELKAY LIZ (P)

200D	400D	600D	Mat. Cow	Milk	SS	EMA	Rib	Rump	RBY	IMF (%)
+4	-3	+1	-3	+2	-0.2	+2.0	-0.9	-1.5	+0.9	-0.2
67%	66%	69%	62%	39%	57%	47%	55%	55%	43%	56%

Comments: Benelkay S132 (PP), Homozygous poll, carries the breeders recommendation for use over heifers. Dam H071 (P) has been a good breeder and has always thrown small calves. She has had seven calves including Qbex (P) a sire of some of the sale team.

Purchaser:.....\$.....

LOT
44



BENLKAY SOMERVILLE S150 (P)

25 Months

S Bull

Id No: BEN21MS150

Tattoo: S150

D.O.B: 23/7/2021



DANGARFIELD YOUNG GUN Y264 (PS)

YARRAWONGA M134 (PS)

Sire: BENLKAY QUILPIE Q002 (P)

Dam: BENLKAY P165 (P)

BENLKAY J027 (P)

BENLKAY J222 (P)

200D	400D	600D	Mat. Cow	Milk	SS	EMA	Rib	Rump	RBY	IMF (%)
0	+9	-3	-1		+0.2	+0.1	+0.2	0.0	-0.3	+0.4
57%	59%	64%	54%		64%	42%	50%	49%	38%	51%

Comments: Somerville (P), Heifers calf, desirable neat sheath, very efficient style of bull. Dam P165 (P) was a heifer when she had Somerville and has weaned a T heifer.

Purchaser..... \$.....

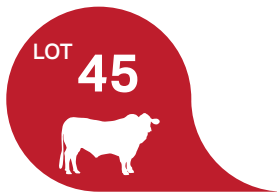


Keith Saunders
Director

Suite 2/202 Hume St
(PO Box 521)
Toowoomba QLD 4350

M 0417 463 079
P 07 4688 8200

E keith@calibreadvisors.com.au
W calibreadvisors.com.au



BENLKAY SAMSUNG S026 (PP)

26 Months

S Bull

Id No: BEN21MS026

Tattoo: S026

D.O.B: 8/6/2021



WAVE HILL DAPTO D564 (PS)

BENLKAY HOT SHOT H074

Sire: BENLKAY PAMPAS P018 (P)

Dam: BENLKAY M023 (P)

BENLKAY F25 (P)

BENLKAY JILLEROO 1439 (P)

200D	400D	600D	Mat. Cow	Milk	SS	EMA	Rib	Rump	RBY	IMF (%)
+8	+8	+15	+31	+3	-0.8	+1.5	-0.5	-0.4	+0.5	-0.2
62%	61%	65%	59%	42%	46%	45%	51%	51%	41%	53%

Comments: Samsung (PP), Homozygous poll, very dark cherry red. Sires outlook with good thickness throughout his body. Dam M023 (P) has had three calves recorded with Samsung being her first sale bull.

Purchaser..... \$.....

BENLKAY SPECTACULAR S230 (PP)

23 Months

S Bull

Id No: BEN21MS230

Tattoo: S230

D.O.B: 13/9/2021

46^{LOT}



WACO CHEVRON H1305 (P)

BENLKAY HALFBACK H076 (PP)

Sire: BURRAMURRA BOSS 152 (PP)

Dam: BENLKAY M005 (P)

KULOOMBA 265 (P)


BENLKAY LINDFIELD (P)

200D	400D	600D	Mat. Cow	Milk	SS	EMA	Rib	Rump	RBY	IMF (%)
+11	+6	+15	+25	+3	-1.2	+2.6	+0.8	+0.7	+0.5	+0.3
66%	64%	67%	59%	35%	68%	47%	55%	54%	42%	56%

Comments: Spectacular (PP), Homozygous poll, plenty of growth and length in this bull, tropical skin type with a great constitution, desirable light sheath Dam M005 (P) has had five calves three recorded one other sale bull.

Purchaser:.....\$.....

LOT **47**



BENELKAY SEAL S110 (PP)

26 Months

S Bull

Id No: BEN21MS110

Tattoo: S110

D.O.B: 12/6/2021



WACO CHEVRON H1305 (P)

WAVE HILL DAPTO D564 (P)

Sire: BURRAMURRA BOSS 152 (PP)

Dam: BENELKAY N077 (P)

KULOOMBA 265 (P)

BENELKAY LULU

200D	400D	600D	Mat. Cow	Milk	SS	EMA	Rib	Rump	RBY	IMF (%)
+2	+2	+12	+13	0	0.0	+1.7	-0.7	-1.3	+1.1	-0.3
66%	64%	67%	59%	37%	55%	46%	54%	54%	42%	55%

Comments: Seal (PP), Homozygous poll, long bodied tropical bull, breeders recommendation to use over heifers. Dam N077 (P) has had four calves with one female retained within the stud.

Purchaser..... \$.....

BENELKAY SADLER S068 (PS)

25 Months

S Bull

Id No: BEN21MS068

Tattoo: S068

D.O.B: 20/6/2021

48^{LOT}



YARRAWONGA M134 (PS)

MACAIRE HALLMARK H37 (P)

Sire: BENELKAY QBEX Q072 (PP)

Dam: BENELKAY P033

BENELKAY H071 (P)

BENELKAY H025 (P)

200D	400D	600D	Mat. Cow	Milk	SS	EMA	Rib	Rump	RBY	IMF (%)
+14	+21	+22	+25		+0.1	+1.4	-1.5	-2.1	+0.6	-0.4
57%	59%	64%	55%		64%	43%	50%	50%	38%	52%

Comments: Sadler (PS), Mid-maturity style young bull with a strong carcase and top line, Very athletic , free moving and well balanced bull. Dam P033 had Sandler as a heifer and has weaned a nice T heifer.

Purchaser:.....\$.....

LOT
49



BENELKAY SONNY BOY S126 (PP)

26 Months

S Bull

Id No: BEN21MS126

Tattoo: S126

D.O.B: 9/6/2021



WACO CHEVRON H1305 (P)

MACAIRE HALLMARK H37 (P)

Sire: BURRAMURRA BOSS 152 (PP)

Dam: BENELKAY L157 (P)

KULOOMBA 265 (P)

BENELKAY E39 (P)

200D	400D	600D	Mat. Cow	Milk	SS	EMA	Rib	Rump	RBY	IMF (%)
+6	+8	+12	+6	+2	-0.6	+3.0	+0.6	+0.6	+0.3	+0.2
67%	66%	69%	62%	36%	56%	47%	55%	55%	42%	56%

Comments: Sonny Boy (PP), Homozygous poll, thick set with good length of carcass, dark coated bull. Dam L157 (P) has had five calves and one other sale bull sold to James Wipple in 2021.

Purchaser..... \$.....

BENELKAY SNAZZY S280 (PS)

20 Months

S Bull

Id No: BEN21MS280

Tattoo: S280

D.O.B: 10/12/2021

50^{LOT}



WACO CHEVRON H1305 (P)

BENELKAY HOT SHOT H074 (PP)

Sire: BURRAMURRA BOSS 152 (PP)

Dam: BENELKAY M259 (P)

KULOOMBA 265 (P)

BENELKAY F15 (P)

200D	400D	600D	Mat. Cow	Milk	SS	EMA	Rib	Rump	RBY	IMF (%)
+1	-2	+4	+8		-0.2	+1.6	+0.4	+0.1	+0.5	+0.4
63%	64%	67%	60%		68%	46%	55%	54%	42%	56%

Comments: Snazzy (PS), very young bull in the sale team, soft style of bull, carries the breeders recommendation for use over heifers as we nearly kept him to use ourselves as a heifer bull. Dam M259 (P), has had four calves one other sale bull who sold in 2021 for \$11,000 to the Knapmans.

Purchaser:.....\$.....

Dugald Geddes

'Violet Banks' 3044 Orange Grove Road
Gunnedah NSW 2380



STOCK TRANSPORT

Mob 0429 432 552

Roar

Fully Insured for Stud Stock

Truck Combinations

18 Foot 30 Foot 26 Foot 52 Foot

Thank you



BUYERS INSTRUCTION SLIP

Bid Card Number

PIC Number

Buyer

Postal Address

..... Postcode

Client Name

Client Phone Number Mobile

Client Email Address

Agents Name Mobile

Agents Company

Agency Address

Lots Purchased

Total Number of Lots Purchased

Is a Stud Transfer Required? Yes No

If 'Yes' please state name to be transferred to

..... Stud Number

Delivery

Delivery Day/Date Time

Destination

(If different from postage address)

Carrier's Name & Travel Arrangements

.....

Signature Date

We wish to thank you for attending our 12th Annual Benelkay Poll Santa Bull Sale in 2023

Thank you to the Emerald Hill Progress Association for catering and The Coffee Float for their Coffee and Tea

We appreciate all our friends Agents and Clients, the successful purchases as well as the under bidders who made the day what it has been.

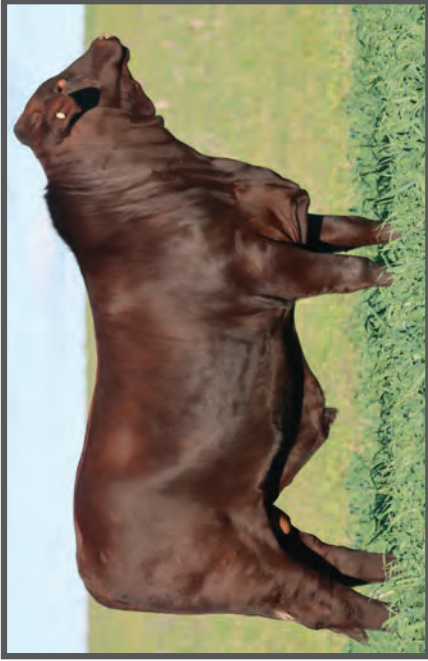
Please have a safe trip home and we invite you back on Thursday 15th August 2024 for our 13th Annual Sale.

2023 Sale Summary

Category	Num.	Total	Average	Top Price
S Bulls				
Herd Bulls				
Gross				

**Freight Incentives available please
enquire Andrew 0427435201**

Value for money in 2022



\$9,000



\$9,000



\$7,000



\$9,000

Andrew & Jules Orman
Benelkay SG Stud
Phone: 0427 435 201



SCAN ME

Please Bring This Catalogue to the Sale

www.benelkaysantas.com.au