



# GYRANDA

SANTA GERTRUDIS



## 2022 SALE

# SATURDAY 17th September

Commencing 12 noon

*Comprising:*

**71 Classified Santa Gertrudis Bulls**  
**30 Purebred Santa Gertrudis Bulls**



We offer appealing rebate options to all outside agents who introduce clients. Enquire at your local agent of choice or alternatively contact the settling agents below.

**Peter & Nikki Mahony**

Gyranda, Theodore Q 4719

(07) 4993 7144 0438 931 657 [peter@gyranda.com.au](mailto:peter@gyranda.com.au)

[www.gyranda.com.au](http://www.gyranda.com.au)



Taroom | Ph (07) 4627 3027 Fax (07) 4627 3048

Graeme McAdam 0428 273 028 | Jordan Wenham 0437 715 017

GDL Stud Stock | Mark Duthie 0448 016 950 | Georgie Connor 0428 347 550

Peter Daniel 0428 790 967 | Geoff Maslin 0427 697 527

Jack Burgess 0427 576 949 | James Bensley 0447 879 300

## The Gyranda Operation

### Gyranda History – A Family Affair

The Gyranda property originally formed part of the Joyce & Joyce operation founded by Fitzpierce and Eileen Joyce and, later, run in partnership with his sons E.B. 'Barney' Joyce and Raoul Joyce. In 1967, the Eidsvold Station based partnership was divided. Gyranda Pastoral Company was established as a partnership between Raoul and Ida Joyce and their four sons to run the Properties situated on the Dawson River.

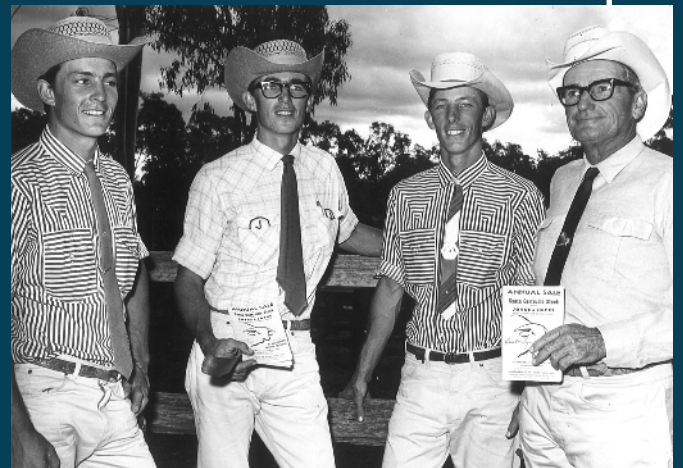
Gyranda Pastoral Company was owned and operated by Burnett and Louise Joyce until 2011 when the fourth generation - Peter and Nikki Mahony took over the reins.

### Gyranda & Santa Gertrudis

In 1953 three Santa Gertrudis bulls were purchased by Joyce & Joyce from King Ranch Australia (imported from the ranch headquarters in Texas, USA). In 1954 purebred Santa Gertrudis females were imported from the Armstrong Ranch, Texas, USA.

This was the beginning of the Santa Gertrudis operation on Gyranda. A grading-up program was commenced using existing high quality Hereford females. A subsequent crossbreeding and grading-up program was begun in 1972.

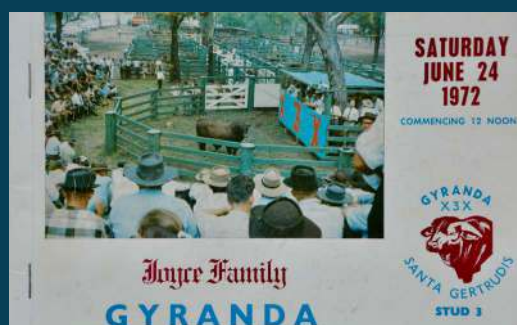
Purebred Brahman bulls were used over Santa Gertrudis females. Their progeny was crossed back to Classified Santa Gertrudis Bulls and the best of the third cross animals were introduced back into the stud herd.



*Burnett Joyce, Anthony Coates, Donald Joyce and Raoul Joyce*

The first Gyranda on property sale was held in February 1968 to much fanfare. Newspapers at the time reported that 750 cattlemen and their families attended. At a time when the median Australian house cost \$24,000, the top price Gyranda

bull sold for \$4750 to Mr. Doug McNicol of Blackall and 64 bulls (including second and third cross) sold for an average just over \$1000 each. With one exception we have continued to host an annual sale every year since.





Over the decades Gyranda has participated in a variety of competitions to benchmark the genetics produced. From the showing to the slaughterroom it is important to know where we stand.

A highlight of the showing was Sydney Royal Show of 2002. In the Jubilee year a record 167 Santas were paraded with Gyranda cattle taking out three of the four Championship ribbons. Gyranda Crackerjack V532 went on win again at Brisbane and become a key part of some of the best Gyranda genetics of the last 20 years.



In recent years we have focussed more on commercial competitions like Australia's largest head-to-head feedlot competition the RNA Paddock to Palate where Gyranda cattle have won the nation's top weight gain in 2015, 2017 and 2020.

In 2021 Gyranda again won the Santa Society's national steer trophy for best commercial performance in the breed.





## What makes us tick

### So you want a quiet, poll bull...

What drives you drives us, although the bull you buy today is the result of genetic decisions we made three years ago and to a real extent we have to be able to either predict where the market is going, or be brave enough to lead it.

Most clients tell us that they like to keep it relatively simple. To be able to pick the bulls they like, perhaps with a little reference to data, but overwhelmingly to be able to trust that we have done the groundwork. That the bull we put before them has some core non-negotiables when it comes to performance, fertility and longevity. We take our responsibility to deliver this very seriously.

### Fertility

Long the bedrock of the Gyranda herd. We believe it remains the primary determinant of profitability in the northern beef herd. It is also nature's way of keeping a check on what we do with growth and carcass.

Gyranda females are run lean. This, along with generations of a short joining period of 10 weeks to three months in ticky, predominately Ironbark and Box country has forced the cream to the top.

### **The average Gyranda Dam is in the top 20% of the breed for their Days to Calving EBV.**

These cows remain our engine room for performance but their extreme fertility also allows us to utilise some bulls which may not have as much fertility but carry other traits we are searching for.



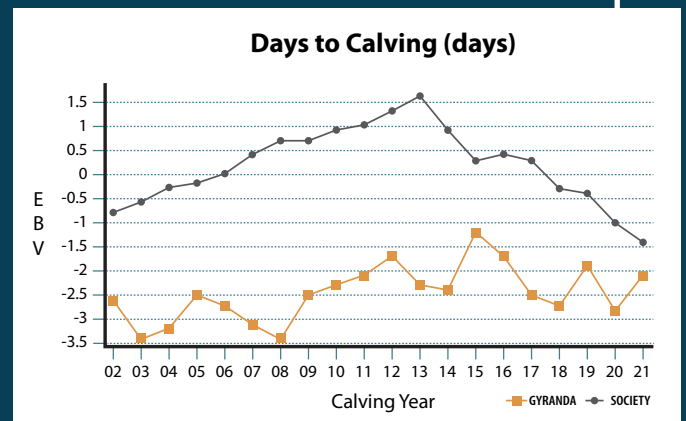


The recorded portion of the Santa breed has made large inroads into fertility over recent years, to the point where the breed average has almost reached the Gyranda herd average. We will continue to push fertility, but not at the expense of all else.

We are heavily involved in a number of research projects which are breaking down the fertility question more and more. It is hoped that these insights will give us an increasing array of tools to address specific issues like two year old heifers getting back into calf.

For your selection the Days to Calving (DTC) EBV remains the most important when selecting for fertility in the daughters of the bull you buy. Remember that the lower the better with this EBV. I always look at the calving record of the dam also. Sometimes this may conflict with the DTC EBV.

Scrotal size is correlated to early puberty. Look for good SC data if you want higher pregnancy rates in your heifers – especially if joining as yearlings.



## What makes us tick

### Inherent Fertility of the Bull you Buy

Can the bull you buy physically mate cows, and when he does can his semen inseminate them with reliability?

Many clients are of the belief that all bulls for sale should meet this criteria, but unfortunately this is not the case. It is very much an example of buyer beware and, along with genetics, feeding grain is the largest factor in bulls failing for fertility.

**Semen Morphology** was demonstrated in the broad-based Bullpower 1 and Bullpower 2. projects to be the single figure most closely correlated to calves on the ground. That is why we will not sell a bull without having passed a genuine semen morphology test.



A pass for semen morphology is 50%, but 70% plus is ideal, especially if you are single sire mating or using limited bulls.

A full Bull Breeding Soundness Evaluation (BBSE) is able to identify most problems that might impede your bull's function like a dysfunctional penis, deformed testes, bad feet or eyes. All Gyranda bulls are sold with a BBSE.



**Libido, or Sex Drive**, is somewhat harder to measure. What we do know from the research projects is that dominant bulls beget dominant bulls. It is a heritable trait.

Gyranda is the only Santa herd to DNA test all of our calves, and we have been doing it since 2009. Our sires are usually joined in multi-sire herds of between three and eight sires. Through DNA we are able to

track which bulls actually compete for cows and produce calves on the ground. By selecting these more dominant sire lines you are able to select a sire with more sex drive than the normal bull.

You may notice a relatively new EBV called Percent Normal Sperm. This figure is of interest to those looking to produce their own bulls from this sire. It is thought that it also correlates to other fertility traits, but there is still research to be done on this one.



## Growth

Improving growth rates are critical to ongoing profitability. Being able to turn cattle off earlier enhances everything from your bottom line to your carbon account. But as any north Australian cattleman knows dead cattle don't bring in much income.

There are four critical caveats to concentrating on growth:

- **Fertility**
- **Survivability – especially in variable seasons**
- **Birthweight**
- **Mature Cow size and efficiency**

Here at Gyranda we make no apologies for providing you with a selection of bulls with higher growth rates year after year. We also make no apologies for working to ensure that this higher growth doesn't bring with it nasty surprises.

## Birthweight

For a long time Gyranda was the only Santa stud to measure birthweights. It is an expensive and difficult trait to measure, but recently other studs like Cree, Nioa and Jamally have also been weighing calves and it has improved the available information.

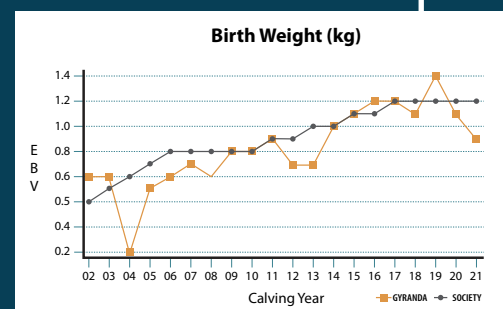
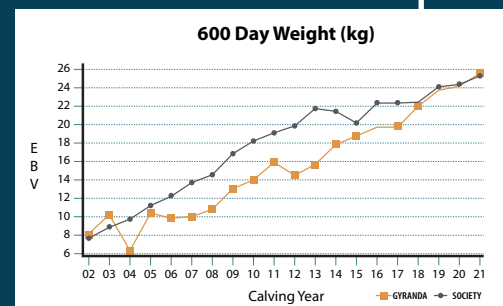
What we know is that birthweight is highly correlated to growth. Understandable then that a growing number of Bos Indicus breeders who thought themselves immune to calving difficulty have learnt otherwise in recent years.

The only way to identify the **curvebenders** that deliver low birthweight and high growth is to measure it. EBV data shows that here at Gyranda we have been able to reduce our birthweight whilst maintaining growth by using sires with genuine curvebending capability.

In addition, we are able to identify those sale bulls that are suited to clients who are purposely chasing low birthweight bulls. Most of these are low birthweight, high growth sires meaning that you sacrifice nothing by ensuring your heifers are given the best chance of survival.



Those low birthweight bulls are designated in the catalogue with this logo. This is not a guarantee. Dam genetics, structure and nutrition, especially a flush in the second trimester, are important factors also affecting birthweight.





# GYRANDA

SANTA GERTRUDIS

## What makes us tick

### Carcase

It may be that carcass is down the priority list for many northern producers but we find that more and more clients are shifting their focus – especially if they feel they are on top of fertility and growth.



While never likely to compete with Wagyu, a Santa is capable of delivering MSA grades on par with other Taurus breeds and we have an ever increasing portion of our herd at that premium end. A drive to push eye muscle in combination with IMF has been a large part for our ongoing interest in U.S. genetics, and it is starting to pay dividends.

The U.S. Santas also measure feed intake more than we do in Australia. Given that the downside of high IMF is often lower growth and feed efficiency we thought it pertinent to chase down improved IMF in the Gyranda herd with both eyes open. Red Doc. Diablo is a prime example of one of those rare curvebenders that combines high IMF with great feed efficiency.



You will find bulls in the Gyranda lineup that suit your individual requirement. Some at the very top of the breed for fats and EMA and increasingly without sacrificing growth or fertility.

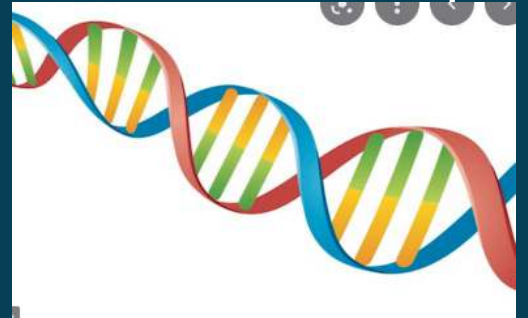




## DNA

### What does DNA analysis deliver?

1. An accurate pedigree which ensures a more consistent performance and more accurate EBV data.
2. A more accurate evaluation of horn status.
3. In combination with ongoing recording of traits and research projects the capacity to deliver targeted selection tools which can be utilised on younger animals.



Burnett Joyce pioneered the use of DNA technology in Beef Cattle over 30 years ago. Gyranda has DNA tested their entire herd since 2008 and continues to work closely with researchers to enhance this tool.





# GYRANDA

SANTA GERTRUDIS



## Temperament

How your bull handles is the result of both the environment and his genetics. In the belief that both are critically important we spend considerable time on both aspects.

At weaning all cattle are run through an intensive process which teaches them safety in the mob, how to walk out, to stop and eat when they hit a paddock and how to take pressure. To re-enforce this process we run a Low Stress Stock school every two years here at Gyranda for both new staff and others.

The way in which calves of your bull behave is a different matter. For this the Flight Time EBV is irreplaceable. Utilise it as would other EBV's. If temperament is a trait you would like to improve in your herd then look to select a sire in the top 25% or better of the breed.



## Nutrition and Constitution

One of the most consistent points of feedback is that Gyranda bulls continue to grow after sale day and can maintain condition where others fall away.

Genetics has a large role to play in this constitution but there is no EBV or other benchmark to select for. Rather it is the result of multiple generations of selection for animals that perform (especially by falling pregnant and weaning a good calf each year) across the full gamut of seasonal conditions in a herd run lean.

In the bull you buy an even plain of nutrition also has a role to play. We will look after our weaners for some time from the point of weaning. In years when we have had to early wean this means providing a full silage based diet until they reach an acceptable weight where they can look after themselves.



Gyranda weaner bulls usually spend their first winter on crop based on a mix of lucerne, radish, wheat, barley, oates, forage rape and vetch. We realise how fortunate we are to have the water and infrastructure to give these bulls this non-grain diet. Their second summer will be on grass and crop (improved grass and lucerne). The winter before sale day they are finished on irrigated oates or barley with limited grain supplementation.





# GYRANDA

SANTA GERTRUDIS

## Introducing the **MacArthur Family's Normanby Stud #1131**

Andrew MacArthur is well recognised throughout the Santa world. A Classifier for several years before working as a senior manager with Stanbroke and over recent years developing the successful Plasvacc business in Australia, U.S.A and the U.K. Alastair, Fergus and Callum MacArthur also have diverse Beef industry experience and together they have revitalised their Normanby Stud now based at "Rock Point" near Boonah.

In the dry of 2017 we were forced to sell down a large number of cattle, including our entire commercial cow herd, some stud cows and a generation of heifers. The MacArthurs bought most of those cows and today Gyranda bloodlines dominate the Normanby prefix.

Last year Gyranda purchased the Normanby weaner bulls. A step we took again in 2022 and would hope to do for the next few years. DNA tested, with accurate birthdates and pedigrees, and carefully selected by the MacArthur family, these bulls fit nicely into the Gyranda offering. In the 16 months we have them here we measure and test so that they carry a very similar level of certainty to the regular Gyranda bulls you buy.





## Group BreedPLAN EBVs

### July 2022 Santa Gertrudis GROUP BREEDPLAN - Percentile Bands for all 2020 born animals

Use this table as a guide to compare individual animals with the current genetic level of the breed

	Birth		Growth				Fert				Carcase				Extra		Indexes		
	GL	Bwt	200	400	600	Mwt	Milk	SS	DC	Cwt	EMA	Rib	Rump	RBY	IMF	FT	PNS	DOM	EXP
	days		kg				cm	days	kg	sq.cm	mm	%			secs	%	\$		
High 1%	-3.6	-2.0	+26	+38	+55	+73	+5	+3.2	-13.6	+24	+5.3	+2.4	+2.6	+1.9	+0.8	+0.40	+8.1	+\$ 34	+\$ 48
High 5%	-1.9	-0.8	+21	+32	+44	+59	+4	+2.5	-9.8	+20	+4.2	+1.7	+1.6	+1.5	+0.5	+0.26	+5.5	+\$ 29	+\$ 40
High 10%	-1.4	-0.3	+19	+29	+39	+52	+3	+2.1	-7.9	+18	+3.7	+1.4	+1.3	+1.3	+0.4	+0.19	+4.2	+26	+36
High 20%	-1.0	+0.3	+16	+25	+34	+43	+2	+1.6	-5.4	+15	+3.1	+1.0	+0.7	+1.0	+0.3	+0.13	+2.6	+\$ 23	+\$ 31
High 30%	-0.7	+0.7	+14	+22	+30	+38	+1	+1.4	-3.4	+13	+2.7	+0.7	+0.4	+0.9	+0.3	+0.09	+1.6	+\$ 21	+\$ 27
High 40%	-0.5	+1.0	+12	+19	+26	+33	+1	+1.2	-1.9	+11	+2.4	+0.6	+0.2	+0.8	+0.2	+0.07	+0.9	+\$ 19	+\$ 23
50%	-0.4	+1.3	+11	+17	+23	+28	+0	+0.9	-0.8	+9	+2.1	+0.4	+0.0	+0.7	+0.1	+0.05	+0.2	+\$ 16	+\$ 20
Low 40%	-0.3	+1.5	+9	+15	+21	+25	+0	+0.7	+0.2	+8	+1.9	+0.2	-0.2	+0.6	+0.0	+0.03	-0.2	+\$ 14	+\$ 17
Low 30%	-0.1	+1.8	+8	+13	+18	+21	-1	+0.6	+1.3	+6	+1.6	+0.0	-0.4	+0.4	+0.0	+0.01	-0.7	+\$ 12	+\$ 15
Low 20%	+0.0	+2.2	+6	+10	+15	+17	-2	+0.3	+2.7	+5	+1.3	-0.2	-0.7	+0.3	-0.1	-0.02	-1.3	+\$ 10	+\$ 12
Low 10%	+0.2	+2.7	+4	+7	+10	+9	-3	+0.0	+4.7	+2	+0.8	-0.5	-1.1	+0.0	-0.2	-0.06	-2.2	+\$ 7	+\$ 7
Low 5%	+0.5	+3.2	+1	+4	+6	+2	-4	-0.4	+6.9	+0	+0.3	-0.8	-1.4	-0.2	-0.3	-0.10	-3.1	+\$ 2	+\$ 0
Low 1%	+1.3	+4.2	-4	-3	-3	-10	-5	-1.1	+14.3	-6	-0.6	-1.3	-2.1	-0.6	-0.5	-0.19	-5.6	-\$ 8	-\$ 18

### GROUP BREEDPLAN EBVS – HOW TO USE THEM

BREEDPLAN is a genetic evaluation system for beef cattle that uses all pedigree and performance information known about an animal and its relatives to calculate Estimated Breeding Values (EBVs). EBVs are the best estimate of the genetic merit of an animal for each trait measured. EBVs are free from environmental influences that play a significant part in the observed performance of an animal. Units of measurement for EBVs depend on the trait; for example, growth traits are in kilograms and fat depth in millimeters.

The GROUP analysis for Santa Gertrudis BREEDPLAN is processed by ABRI (Agricultural Business Research Institute) from the integrated pedigree/performance database of the Santa Gertrudis Breeder's (Australia) Association.

NB: GROUP BREEDPLAN EBVs can be compared with animals in other Santa Gertrudis Herds but not with animals in other breeds. It is important when assessing GROUP EBVs of a particular animal, to compare them with the average of the breed. The average of 2020 drop calves is used as the measurement of the current genetic level of the breed.

#### Average EBVs for the 2020 born animals analysed in the July 2022 Santa Gertrudis GROUP BREEDPLAN

200D	400D	600D	MWT	MILK	SS	DTC	
+11	+18	+24	+30	+0	+1.0	-1.0	
EMA	RIB	RUMP	IMF	FLIGHT TIME	PNS	DOMESTIC	EXPORT
+2.2	+0.4	+0.1	+0.1	+0.06	+0.0	+\$ 16	+\$ 20



## HOW TO USE EBVs

The first step is to decide what characteristics are important in your breeding program, and then select EBVs which fit the bill for your herd. For example, if you are selling 14 month old steers and the last draft you sold could have been heavier without prejudicing your market, then you should look for a bull with a high EBV for 400 day weight.

## ARE BULLS WITH BELOW AVERAGE EBVS WORTH BUYING?

Yes. They can be. EBVs are a guide to help in selection – not the only selection criteria you should use.

## 200 DAY MILK AND GROWTH

The vealer producer should place emphasis on the 200 day growth and milk genes. If the bull is to be used as a terminal sire, growth is most important. If the bull is to be used to breed replacement heifers and superior milking and mothering ability is required then pay close attention to the EBVs for milk (kg). The estimate in kg milk is not the yield of milk of the dam, but the growth of the calf due to more milk and better mothering in the dam.

## 400 DAY WEIGHT

400 Day Weight EBVs are a measure of the animal's ability to grow to 400 days of age (can be measured from 301 – 500 days). It should be used by producers who wish to turn off yearling cattle.

## 600 DAY WEIGHT

600 Day Weight EBVs are computed for growth to 600 days of age (can be measured at 501 – 900 days of age). In production systems for heavy steers, this is important. It is the best prediction of an animal's ability to grow on to maturity.

## SCROTAL SIZE

Scrotal Size EBV is an indicator of male fertility in regards to semen quality and quantity. Higher (positive) EBVs indicate higher fertility. There is also a small negative correlation with age at puberty of female progeny.

## DAYS TO CALVING

Days to Calving EBV is an indicator of female fertility based on the time between a cow's first exposure to a bull and when she subsequently calves. Cows that calve late in the season or fail to calve are penalised. This is more useful as a sire trait. Lower, or more negative, Days to Calving EBVs are generally more favourable. For example, a bull with a Days to Calving EBV of -5 days would be expected to produce daughters that conceive earlier in the joining period than the daughters of a bull with a Days to Calving EBV of +5 days.

## CARCASE EBVS

Carcase EBVs are currently calculated from scanning information on live animals. Fat scans at rib and rump are used to calculate fat depth EBVs. Scanned eye muscle area at 12/13 rib section is used to calculate EMA (eye muscle area) EBV. Scanned fat, scanned EMA and liveweight are used to estimate Meat Yield EBVs.

## FAT DEPTH

Usually expressed as a single EBV for Rump Fat (P8) in mm and adjusted to 450 days of age. An EBV above the GROUP average indicates animals which will breed progeny fatter or fattening earlier than the Santa Gertrudis average. An EBV below the GROUP average will indicate animals that tend to produce progeny leaner or fattening later than the Santa Gertrudis average. While emphasis in the industry is towards the production of lean carcasses, it must be remembered that selection for extreme leanness may result in breeding females with reduced drought tolerance and lower fertility in harsh environments.

### **EYE MUSCLE AREA (EMA)**

Expressed in square cm, predicts the size of eye muscle in progeny at 450 days of age. The EMA EBV is adjusted for age. Therefore high EBV values are generally derived more from high growth rate potential (i.e. total weight), rather than from heavy muscling. Because of a positive association with liveweight, EMA EBV is seen more as a predictor of Total Yield than an indicator of muscling.

### **ESTIMATED TOTAL MEAT YIELD (ETMY)**

Predicts the total meat yield produced by progeny at 450 days of age. Prediction of total meat yield is based on liveweight and scan EMA. Total meat yield has a high positive correlation with 450 day weight EBV. Initially this EBV should be used to fine tune selection decisions, i.e. for animals of desired growth and fertility, select the highest ETMY EBV.

### **FLIGHT TIME EBVS**

Flight Time EBV's are estimates of genetic differences between animals in temperament. Flight Time EBV's are expressed as differences in the number of seconds taken for an animal to travel approximately 2.0 metres after leaving the crush. Higher (i.e. Longer) Flight Time EBV's are more favourable. That is, higher EBVs indicate a longer time taken to exit the crush and hence better temperament. For example, a bull with an EBV of +0.80 would be expected to on average produce progeny that took 0.7 of a second longer to exit the crush than a bull with an EBV of -0.60.

### **PERCENT NORMAL SPERM**

PNS is a new EBV that predicts the likelihood of your bull's sons having higher or lower semen morphology. This figure is really only relevant to those producing bulls, but research is continuing into the correlation of this figure with female fertility traits, to which it is generally assumed they are closely correlated.

### **SELECTION INDEXES**

There are currently two different selection indexes calculated for Australian Santa Gertrudis animals. These are:

- Domestic Production Index
- Export Production Index

Each selection index describes a different production/market scenario and relates to a typical, self replacing Santa Gertrudis herd targeting the following specifications. Domestic Production Index - Estimates the genetic differences between animals in net profitability per cow joined for an example self replacing commercial herd (run in a temperate environment) producing steers for the domestic trade. This Index assumes that the steer progeny are pasture grown and finished and marketed at 500 kg live weight (280 kg HSCW and 12 mm P8 fat depth) at 16 months of age. Daughters are retained for breeding.

### **EXPORT PRODUCTION INDEX**

Estimates the genetic differences between animals in net profitability per cow joined for an example commercial herd (run in a sub-tropical environment) producing steers for the export trade. This Index assumes that the steer progeny are pasture grown and finished and are marketed at 620 kg live weight (340 kg HSCW and 15 mm P8 fat depth) at 28 months of age. Daughters are retained for breeding. All selection indexes are reported as an EBV, in units of relative earning capacity (\$) for a given production/market scenario. They reflect both the short term profit generated by a sire through the sale of his progeny, and the longer term profit generated by his daughters in a self replacing cow herd. All selection index values have been derived using Breed Object technology.

### **ACCURACY**

An accuracy on EBVs gives an indication of the amount of information that has been used in the calculation of that EBV. The higher the accuracy, the less the animal's EBVs are likely to change as more information is analysed for that animal and its relatives.





# GYRANDA

SANTA GERTRUDIS

## Homozygous Poll (PP) Gene Test

PP

Most of the poll bulls in this catalogue have been genetically tested for the homozygous poll gene. Those that are genetically PP with a double poll gene will deliver more poll calves than a normal (heterozygous) poll bull and substantially more than a horned bull. Just how many poll calves are born depends on your cows but it is not uncommon for a PP bull to father all poll calves.

## Suitable for Heifers



At Gyranda we have been weighing first calf heifers and closely monitoring their performance for six years. This has allowed us to build up a good understanding of what characteristics dictate that a bull is suitable to put across heifers. Especially those higher growth bulls that we may have traditionally steered away from. It is not a guarantee, but useful information utilising all of the available data (sire, dam, their actual birthweight) available to us.



## Important Notices

The Selling Agent, its members, subsidiary or related corporations, officers, agents and employees for themselves and for those for whom they act, while exercising due care, provide all information without responsibility and give no guarantee whatsoever as to its accuracy.

All persons who attend the sale do so entirely at their risk and the Selling Agent, its members, subsidiary or related corporations, officers, agents employees and its principals, for themselves and for those for whom they act, do not assume or accept any responsibility or liability of whatever nature for any injury or damage whatsoever which may occur.

### NOTICE TO BUYERS

In the interest of buyers all instructions covering the delivery of cattle purchased at the sale must be given in writing and signed by the buyer or his representative.

### HEALTH

Gyranda herds are situated in a TB and C AB free area and all bulls have been inoculated for Redwater (Tickfever) and 5 in 1. They have also been inoculated for Vibriosis, Botulism and Three Day Sickness (Bovine Ephemeral Fever; yearly booster recommended due June 2023). The Gyranda herd was tested negative for BJD in May 2021 and currently carries a JBAS 7 standard.

### REBATE

The vendor agrees to pay 4% rebate on Bull Purchases to outside agents under the following conditions:

- Buyers must be accompanied in person by the agent to either the sale or the open day and noted as such.
- Invoices must be paid in full by 5pm on 30th September 2022.

Alternatively the vendor agrees to pay 3% rebate on Bull Purchases to outside agents under the following conditions:

- Buyers must be introduced in writing to Gyranda Pastoral Company or Selling Agents at least 24 hours prior to sale.
- Invoices must be paid in full by 5pm on 30th September 2022.

**Note: VENDOR will pay rebate after invoices have been paid in full. Rebate will not be allowed outside these conditions.**







## Important Notices

### FREE FREIGHT AND FREIGHT REBATE

Gyranda will deliver bulls free to local areas including Theodore, Moura, Biloela, Monto, Eidsvold and Taroom. For those outside of these areas we offer a freight rebate to those purchasing five or more bulls of up to \$500, GST inclusive, upon presentation of the paid freight invoice to either their preferred agent or Gyranda Pastoral Co.

### SEMEN MORPHOLOGY TESTING

A Semen morphology examination on the sale bulls was conducted by Ms. Kelli Prosser (Australian Cattle Veterinarians Sperm Morphology Accreditation Number SME0709).

The Total Normal Percentage of sperm for each bull is stated on the supplementary sheet. All bulls with abnormal sperm percentages above the recommended Australian Cattle Veterinarians' thresholds for specific and total abnormalities have been removed from the sale.

Bulls with morphology results from 70% - 100% Normal Sperm are deemed as fertile for single sire mating. Bulls with results from 50% - 69% Normal Sperm are deemed as acceptable for multiple sire mating.

Evidence supports that sperm morphology is highly related to fertility and reflects the status of the testes and the transportation and maturation process in the epididymis.

The Bull Power Project found that semen quality, particularly the percentage of normal sperm, was consistently related to the number of calves sired by the bull in a limited joining period.

### OUR GUARANTEE

All bulls have undergone rigorous and independent assessment for structural soundness and fertility, including a semen morphology test and physical evaluation of the bull's reproductive tract.

On top of this we offer one of the strongest guarantees of any Santa Gertrudis seed stock breeders.

All bulls sold by us are fertile and structurally sound to the best of our knowledge.

If a bull becomes infertile or breaks down due to reasons other than injury or misadventure, at any time within nine months from date of sale we will:

- Provide you with a satisfactory replacement if available, or
- Issue you with a credit (equal to the purchase price minus salvage value) that may be used to purchase any bull at our next sale.

This is not a life insurance policy. Normal care needs to be taken as we cannot replace an animal that is injured or dies for any reason. We recommend you insure animals for full loss of use – an insurance service will be available on Sale Day.

The guarantee strictly covers the purchase value of the bull, without interest cost and damages.

Given the often ambiguous nature of claims, a veterinary inspection (and appropriate testing) of the bulls and a certificate / letter from the vet confirming the infertility or physical 'break down' must accompany any guarantee claim.

This guarantee is in addition to normal terms and conditions governing livestock auctions, printed in your catalogue and such the vendor's decision will be final.

## Important Notices

### YOUR OBLIGATIONS

Our guarantee is not a replacement for good management. It is aimed at appropriately covering the performance of the bull where the cows are diligently managed to recognised industry standards including vaccination for reproductive diseases. The bull owner has a duty to observe joining, monitor late cycling, and communicate any problems with the vendor as soon as possible, to resolve problems.

We outline below a number of factors you may wish to consider in the management of fertility in your investment in Gyranda sires, because like any investment bulls should be looked after to perform to their maximum, to improve the productivity of your herd.

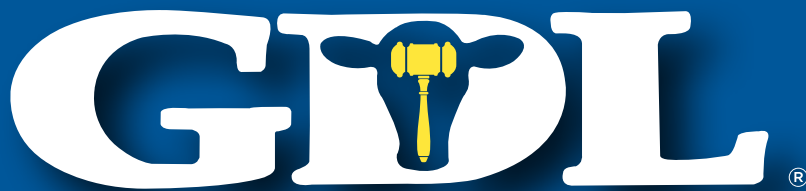
### TREATMENTS

#### 5 in 1, 3 Germ Blood, Vibriosis, Botulism.

- All bulls have been vaccinated with 5 in 1, 3 germ blood, Botulism (Long Acting) and Vibriosis.
- An annual booster is recommended for Botulism and Vibriosis and will be due in June 2023.
- If a bull suffers extreme stress, it can take 70 days before normal sperm is delivered again.
- Whilst these bulls have been vet checked with a positive semen test, it is a known fact that if management changes, bull fertility levels can change. Some changes that can cause stress include: mixing with new and particularly older bulls, a change of diet, transport, different stock handling techniques and personnel, exposure to new diseases and a different environment and temperature.
- Allow your bull to acclimatize before mating, and avoid mixing different age bulls. Their ability to cope will depend largely on temperament, genotype and body condition.
- Bulls, like any high performance athletes, do benefit from an "off-season". If at all possible, spell the bulls after mating to let them re-gain body weight and ultimately health. You may be surprised with the extra years and fertility you can obtain from your bulls.







A NUTRIEN AG SOLUTIONS PARTNER

**Proud Supporter of the  
Santa Gertrudis Breed**

# STUD SALES

Australia



**LIVE AUCTIONS & ONLINE SALES  
BULLS, FEMALES & GENETICS**

**PRIVATE SALES, COMMERCIAL SALES, FEEDLOT SALES**

**The Most Progressive Livestock Agents in Australia.**



Peter Brazier  
0407 525 983

Harvey Weyman-Jones  
0414 941 788

Mark Duthie  
0448 016 950

Georgie Connor  
0428 347 550

Josh Heck  
0409 732 676

Nikita Duthie  
0400 434 085

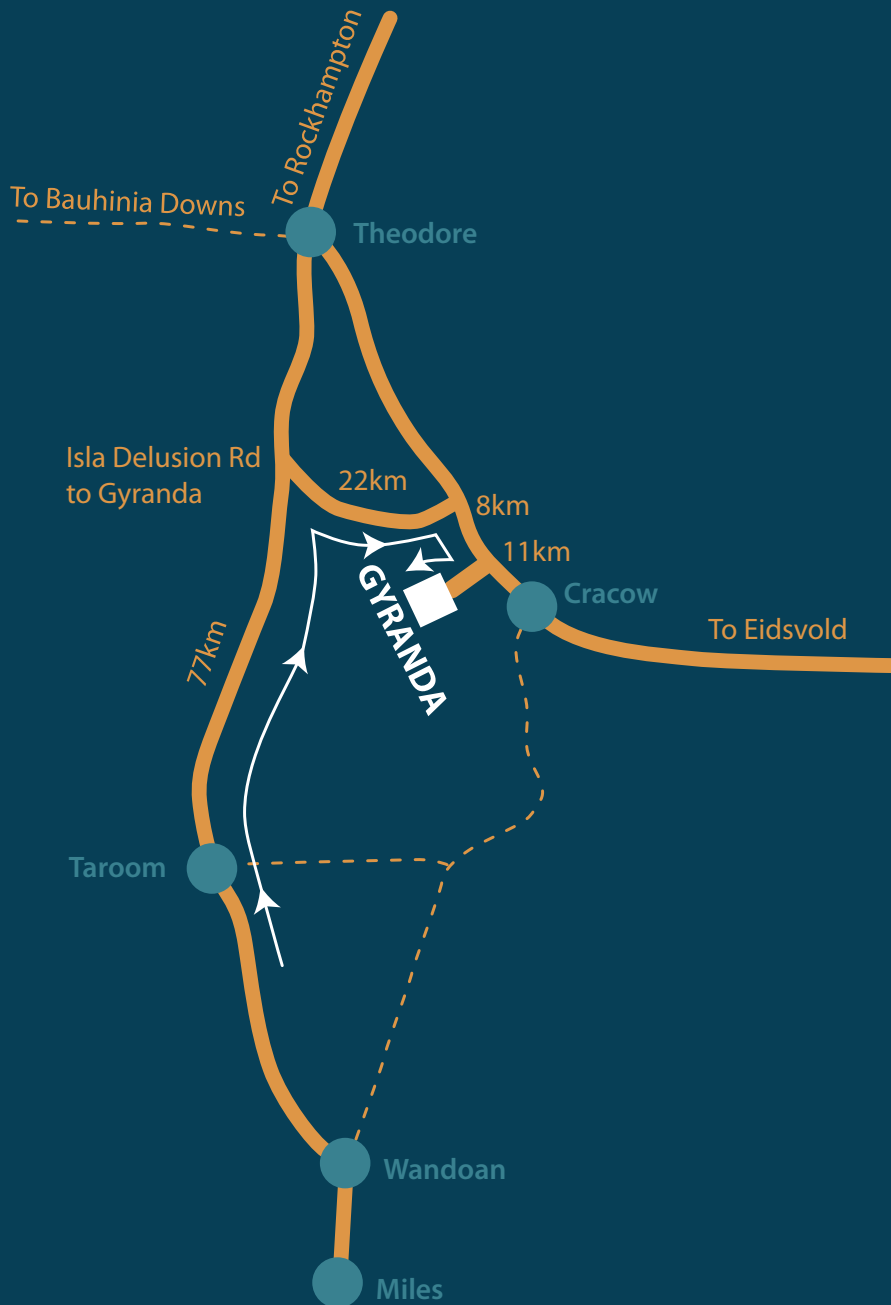
[www.gdlrural.com.au](http://www.gdlrural.com.au)



# GYRANDA

SANTA GERTRUDIS

## Directions to Gyranda



Cracow to Gyranda Grid <i>(Saleyards 5km in from Grid)</i>	11km
Eidsvold to Gyranda	105km
Theodore to Gyranda	43km
Wandoan to Gyranda via Cracow	124km
Rockhampton to Gyranda	249km

**Gyranda all weather Light Airstrip**  
 Strip 1000m  
 East – West  
 Latitude 25° 15"  
 Longitude 150° 11"





# AuctionsPlus

## How to Register and Bid on AuctionsPlus

- 1 Go to [www.auctionsplus.com.au](http://www.auctionsplus.com.au) to register at least 48 hours before the sale.
- 2 Select “**Sign Up**” in the top right hand corner.
- 3 Fill out your name, mobile number, email address and create a password.
- 4 Go to your emails and confirm the account.
- 5 Return to AuctionsPlus and log in.
- 6 Select “**Dashboard**” and then select “**Request Approval to Buy**”.
- 7 Fill in buyer details and once completed go back to Dashboard.
- 8 Complete buyer induction module (approx. 30 minutes).
- 9 AuctionsPlus will email you to let you know that your account has been approved.
- 10 Log in on sale day and connect to auction.
- 11 Bid using the two-step process – unlock the bid button and bid at that price.
- 12 If you are successful, the selling agent will contact you post sale to organise delivery and payment.

For more information please contact us on:

Phone: (02) 9262 4222

Email: [info@auctionsplus.com.au](mailto:info@auctionsplus.com.au)



# GYRANDA

SANTA GERTRUDIS

## Sire Reference



### Cree Niagara N040 (P)

CRE17MN040 DOB 05/10/2016

**CALVES:**

2019 – 12  
2020 – 14  
2021 – 40

**SIRE OF LOTS:**

1, 20, 22, 27, 44, 73,  
82, 89, 97, 99

		GROWTH	
GROWTH	BWT	+4.1	70%
	200D	+30	89%
	400D	+36	87%
	600D	+52	88%
MILK	MWT	+66	79%
	MILK	+5	58%
	SS	+2.3	84%
FERTILITY	DTC	-0.7	63%
	EMA	+3.5	68%
CARCASS	RIB	-0.6	73%
	RUMP	-1.5	72%
	RBV	+1.0	59%
	IMF	-0.2	73%
\$ INDEX	PNS	-2.1	57%
	Flight Time	-0.01	90%
\$ INDEX	DOM	+\$ 27	
	EXP	+\$ 36	

WIGHTFIELDS DOWNPOUR G21 (P)

**ROSEVALE KING K88**

ROSEVALE JADE D175

TOP GUN 244

**CREE F083 (AI)**

CREE Z209

Purchased at the 2018 Cree sale for \$22,000 he was my pick of the first draft of Rosevale King K88 calves – himself the highest priced horned bull in Santa Gertrudis. Niagara brings power from his sire line, but an outcross on his Dam side which has delivered some sterling results for Cree. He stands with EBV data for Growth in the top 1-5% of the breed, combined with very good fertility data & plenty of muscle. This first draft of Niagara calves provide an exciting glimpse into the next generation of ever improving growth, fertility & carcass here at Gyranda.



### Gyranda Moby Dick M224 (PP)

GYR16MM224 DOB 05/08/2015

**CALVES:**

2018 – 20  
2019 – 25  
2020 – 52  
2021 – 12

**SIRE OF LOTS:**

15, 25, 62, 90



		GROWTH	
GROWTH	BWT	+1.9	80%
	200D	+23	90%
	400D	+27	91%
	600D	+40	91%
MILK	MWT	+41	83%
	MILK	-1	66%
	SS	0.0	88%
FERTILITY	DTC	+9.3	75%
	EMA	+5.0	74%
CARCASS	RIB	+2.6	79%
	RUMP	+3.4	78%
	RBV	+0.1	66%
	IMF	-0.1	79%
\$ INDEX	PNS	+4.7	59%
	Flight Time	+0.27	93%
\$ INDEX	DOM	+\$ 13	
	EXP	+\$ 10	

ROSEVALE MATLOCK W20 (AI)(P)

**DANGARFIELD PENROSE (P)**

DANGARFIELD 7064

ROSEVALE GUMPER X546 (P)

**GYRANDA F249 (P)**

GYR16MM224

A tremendous carcass bull with Eye Muscle and fats both in the top 5% of the breed. This quiet, dark coated, homozygous poll sire is an early maturing bull packing plenty of growth. As he reaches the peak of his career Moby Dick has become one of our most consistent performers.



## Sire Reference



ROSEVALE GALLIPOLI G128 (P)  
**ROSEVALE GALLIPOLI K468 (P)**  
 ROSEVALE BRIDE G451 (P)  
 DANGARFIELD TYCOON (P)  
**GREENUP K117 (P)**  
 GREENUP Y73

Pascal was the top priced bull at the 2019 Greenup/Eidsvold Station sale. He is a medium framed sire who does not immediately strike you as the performer he has turned out to be. But in this, his first crop of calves, his sons are amongst the heaviest with the highest Eye Muscle area in the cohort (make that the breed). Clean coated with a very tidy sheath and quiet disposition this young sire is difficult to fault.

### FIRST RELEASE SIRE

#### Greenup Pascal P356 (PP)

GUP18MP356 DOB 04/12/2017

CALVES:  
 2020 – 12  
 2021 – 7



SIRE OF LOTS:  
 18, 32, 37, 43

GROWTH	BWT	+2.2	64%
	200D	+23	77%
	400D	+46	77%
	600D	+55	77%
	MWT	+64	70%
MILK	MILK	+2	53%
	SS	+2.0	79%
	DTC	-5.6	54%
FERTILITY	EMA	+6.3	60%
	RIB	+1.7	67%
	RUMP	+1.9	66%
	RBV	+1.4	52%
	IMF	+0.2	64%
CARCASS	PNS	-	-
	Flight Time	+0.07	75%
	DOM	+\$614	
\$ INDEX	EXP	+\$614	



ROSEVALE DEMOCRAT G268 (P)  
**GYRANDA KENNY K592 (PS)**  
 GYRANDA F445 (P)  
 ROSEVALE BANDANNA F216  
**BIARA 2046**  
 BIARA 499

A young, medium framed bull with a slick coat that I like more and more over time. Purchased at the 2019 Biara sale in Western Australia he was my pick of the first drop of Gyranda Kenny K592 (PS) calves. Kenny has gone on to become a cornerstone of the Biara stud with 174 calves to his name. Northampton 7089 carries a certain style. Long in the body, an unmissable hindquarter and a lovely tidy sheath.

### FIRST RELEASE SIRE

#### Biara Northampton 7089 (PS)

BIA17M7089 DOB 12/05/2017

CALVES:  
 2020 – 29  
 2021 – 12

SIRE OF LOTS:  
 3, 14, 47, 51, 52, 55,  
 56, 72, 92

GROWTH	BWT	+0.3	67%
	200D	+9	85%
	400D	+18	85%
	600D	+24	85%
	MWT	+28	77%
MILK	MILK	0	55%
	SS	+1.7	80%
	DTC	-4.8	62%
FERTILITY	EMA	+4.0	65%
	RIB	+0.3	69%
	RUMP	-0.4	68%
	RBV	+1.6	55%
	IMF	-0.5	70%
CARCASS	PNS	-	-
	Flight Time	-0.01	87%
	DOM	+\$26	
\$ INDEX	EXP	+\$32	



# GYRANDA

SANTA GERTRUDIS

## Sire Reference

FIRST RELEASE SIRE

### Red Doc Diablo 6306 (P)

20164169 DOB 04/23/2016



KR 282/08 1273676

**KR 189/11 1293527 [189/11]**

KR 363/5 5A 1252806 [363/5]

KR 189/11 1293527 [189/11]

**RED DOC 3167 20132957 [3167]**

O.X MACKENZIE 767 1294444

#### CALVES:

2020 – 30

#### SIRE OF LOTS:

7, 9, 10, 11, 13, 41,  
42, 75, 76, 79, 80, 84

When I went to America in 2018 I wasn't too sure what to expect, but a solid three weeks on the road allowed me cut through the froth and bubble to determine which bloodlines were working consistently well throughout the country. My primary aim was to track down some good carcass genetics in an efficient package. Red Doc run their cattle in some pretty tough country down in New Mexico and one bull in particular caught my eye. Diablo. We bought him in partnership with Wiley Ranch for the top price of \$26,000 in 2018. His first sons sold at the Red Doc sale in 2020 to a top of \$59,000 and this year the first of his sons sell here in Australia. Red Doc. sold a bull in April 2022 for the U.S. record price of \$206,000.

You will notice a consistency of type in the Diablo calves: medium framed, clean sheathed, built like a barrel and heavy as lead. At 400 days the heaviest five bulls (admittedly also the oldest by two weeks) were all RD Diablo calves. That is something extraordinary in a high growth herd like Gyranda. High muscle combined with excellent IMF data and exceptional feed efficiency data (from the U.S.) make him a true curvebender with potential to genuinely shift beef production possibilities. Fertility data is still an unknown, but of his 12 daughters, one wasn't joined and ten are PTIC as yearlings, so I'd be optimistic.

Unfortunately this bull has got caught up in the politics and personal vendettas that have long plagued the Australian Santa Gertrudis society. It means this bull with six generations of pedigree is not available for classification or stud duties, but his sons should be on the radar of every commercial cattleman looking to change the game.

	GROWTH	
	BWT	+3.7 65%
200D	+29 78%	
400D	+43 79%	
600D	+53 81%	
MWT	+63 67%	
MILK	- -	
	FERTILITY	
	SS	+0.1 79%
	DTC	+3.0 44%
EMA	+2.6 56%	
	CARCASS	
	RIB	+1.3 60%
	RUMP	+1.2 59%
	RBV	-1.2 44%
IMF	+0.9 62%	
PNS	- -	
Flight Time	+0.04 81%	
\$ INDEX	DOM	+\$ 19
	EXP	+\$ 22



## Sire Reference



### Rowanlea Kluger K32 (P)

ROW14MK32 DOB 14/09/2013

#### CALVES:

2016 – 19    2019 – 68  
2017 – 15    2020 – 21  
2018 – 51    2021 – 22

#### SIRE OF LOTS:

4, 16, 19, 53, 54, 60,  
64, 71, 88

	GROWTH	
	BWT	+2.2 84%
200D	+24 94%	
400D	+39 94%	
600D	+55 94%	
MWT	+84 90%	
MILK	-3 82%	
	FERTILITY	
	SS	+2.7 93%
DTC	-2.5 83%	
EMA	+2.1 78%	
RIB	-1.0 83%	
RUMP	-1.7 82%	
RBV	+0.2 71%	
IMF	+0.4 83%	
PNS	+7.5 63%	
Flight Time	+0.39 95%	
\$ INDEX	DOM	+\$ 27
	EXP	+\$ 41

ROSEVALE BATTALION B150 (P)  
**ROSEVALE BATTALION E622 (P)**  
ROSEVALE AFRA B37 (P)  
ROWANLEA ATOMIC A02 (P)  
**ROWANLEA E31**  
ROWANLEA Y73

As consistent as the day is long, Kluger may be coming to the end of an illustrious career but he continues to deliver quiet, poll calves with exceptional growth and very good fertility. He is still one of the four or five highest growth sires in the breed but with his clean lines and short gestation period his calves don't cause any issues for the cows he goes across.



### Gyranda Mulga Bill M482 (P)

GYR16MM482 DOB 09/09/2015

#### CALVES:

2018 – 17  
2019 – 28  
2020 – 60  
2021 – 8

#### SIRE OF LOTS:

2, 5, 28, 38, 50, 69,  
77, 78, 81, 100, 101

	GROWTH	
	BWT	+0.4 83%
200D	+13 90%	
400D	+19 91%	
600D	+31 91%	
MWT	+56 83%	
MILK	+1 67%	
	FERTILITY	
	SS	+2.3 90%
DTC	+0.7 70%	
EMA	+0.4 73%	
RIB	+0.4 79%	
RUMP	+0.1 78%	
RBV	-0.2 64%	
IMF	+0.3 78%	
PNS	+3.4 61%	
Flight Time	+0.40 92%	
\$ INDEX	DOM	+\$ 9
	EXP	+\$ 18

ROSEVALE NODDY A18 (P)  
**GYRANDA FRANKLIN F238 (P)**  
GYRANDA C361 (P)  
270 MSMU M  
**GYRANDA Z131**

With their slick coat, tidy underline, deep body and breed character the progeny of Mulga Bill have an exceptional record at classification. A grandson of the famous Tyndale Noddy you can see where he gets the coat, frame and style from. It is his Dam, however – Gyranda Z131 – that provides the horsepower. She weaned eleven calves in eleven years, including another sire – Garfield G302 (P). A low birthweight sire with smooth lines, his sons should be good to use across heifers.



# GYRANDA

SANTA GERTRUDIS

## Sire Reference



### Gyranda Monto M272 (P)

GYR16MM272 DOB 10/08/2015

**CALVES:**

- 2018 – 41
- 2019 – 66
- 2020 – 24
- 2021 – 23

**SIRE OF LOTS:**

65, 87

		GROWTH	
GROWTH	BWT	+2.1	89%
	200D	+16	92%
	400D	+12	92%
	600D	+20	92%
	MWT	+43	86%
FERTILITY	MILK	-4	72%
	SS	+0.9	90%
	DTC	-3.9	77%
CARCASE	EMA	+4.0	75%
	RIB	+1.0	80%
	RUMP	+0.7	79%
	RBV	+1.6	67%
	IMF	-0.3	80%
	PNS	-2.9	56%
	Flight Time	-0.09	94%
\$ INDEX	DOM	+\$ 22	
	EXP	+\$ 30	

RAYTEK DEMOCRAT (P)

**ROSEVALE DEMOCRAT G268 (P)**

ROSEVALE HONEY Y165

GYRANDA CRACKERJACK V532

**GYRANDA D549**

MARSTON 1123 (P)

A prolific sire with a slick, dark coat, very tidy sheath and good muscle definition. Monto is another excellent carcass bull with both muscle and fat data right at the top of the breed. His sons consistently carry the coat, underline and eye-catching muscle of their dad.



## FIRST RELEASE SIRE

### Gyranda Paymaster P156 (P)

GYR18MP156 DOB 09/09/2017

**CALVES:**

- 2020 – 70
- 2021 – 35

**SIRE OF LOTS:**

12, 21, 57, 58

		GROWTH	
GROWTH	BWT	-2.2	90%
	200D	+12	88%
	400D	+23	87%
	600D	+34	86%
	MWT	+32	78%
FERTILITY	MILK	+2	51%
	SS	+1.5	82%
	DTC	+4.1	63%
CARCASE	EMA	+3.7	69%
	RIB	-0.2	74%
	RUMP	-0.9	73%
	RBV	+0.8	60%
	IMF	-0.2	74%
	PNS	+1.5	41%
	Flight Time	+0.13	90%
\$ INDEX	DOM	+\$ 16	
	EXP	+\$ 16	

WARENDA D696 (P)

**GYRANDA LONGSHOT L110 (AI)(P)**

GYRANDA H663

GYRANDA EDITOR E572

**GYRANDA M513**

GYRANDA F1049

It's a hell of a job to sire 70 calves as a two year old in a multi-sire mob, but Paymaster managed it in the dry summer 2019/20. A genuine low birthweight, high growth sire with a sleek coat, great sheath and calm demeanour. This bull is a powerful package oozing both style and functionality. His first generation of sons have impressed so much that two of them are retained for stud duties this year.





# GYRANDA

SANTA GERTRUDIS

## Sire Reference

### FIRST RELEASE SIRE



### Gyranda Plato P368 (PP)

GYR18MP368 DOB 04/09/2017

**CALVES:**

2020 – 32  
2021 – 51

**SIRE OF LOTS:**

31, 61, 74, 91, 93

GROWTH	BWT	-0.8	68%
	200D	-1	90%
	400D	-4	87%
	600D	+12	86%
	MWT	+6	78%
MILK	MILK	+3	53%
	SS	-0.3	82%
	DTC	-8.4	63%
FERTILITY	EMA	+2.1	66%
	RIB	+1.2	71%
	RUMP	+0.9	70%
	RBV	+1.2	57%
	IMF	0.0	71%
CARCASE	PNS	+6.4	55%
	Flight Time	-0.47	92%
	DOM	+\$ 12	
\$ INDEX	EXP	+\$ 28	

1944MULT12

**CREE KOMATSU K144 (PP)**

CREE H017 (PS)

GYRANDA ALFIE (P)

**GYRANDA F259 (P)**

GYRANDA B709

Plato is an exciting young sire by Cree Komatsu. His slick coat, tidy sheath and siry outlook leave a mark on his sons. In 2020 Komatsu was joined to some of the elite cows in the Gyranda herd. You'll see that their performance data is what is driving the performance of Plato's sons making them some of the standout young bulls of the sale.



### Gyranda Manchester M516 (P)

GYR16MM516 DOB 01/09/2015

**CALVES:**

2018 – 29  
2019 – 27  
2020 – 18  
2021 – 44

**SIRE OF LOTS:**

31, 61, 74, 91, 93

GROWTH	BWT	+4.0	76%
	200D	+18	92%
	400D	+34	89%
	600D	+41	89%
	MWT	+64	80%
MILK	MILK	-2	56%
	SS	+0.7	85%
	DTC	+0.9	65%
FERTILITY	EMA	+1.4	68%
	RIB	+1.2	72%
	RUMP	+0.8	71%
	RBV	+0.2	58%
	IMF	+0.5	71%
CARCASE	PNS	+4.0	57%
	Flight Time	-0.21	93%
	DOM	+\$614	
\$ INDEX	EXP	+\$614	

ROSEVALE NODDY A18 (P)

**GYRANDA HOMER H344 (P)**

GYRANDA FANTASIA Y579

EIDSVOLD STATION W650

**GYRANDA B851**

A large framed, deep bodied sire with a lovely dark coat and excellent sheath, Manchester has somewhat flown under the radar until now. Last year's crop were commercial calves but he was upgraded, and continues to deliver large numbers of calves that carry excellent growth, fats and respectable fertility. His Dam B851 weaned ten calves for a perfect record.



## GYRANDA SOVIET S450 (PS)

'S' BULL  
GYR21MS450 4/10/2020 (24 mths)



WIGHTFIELDS DOWNPOUR G21 (P)  
ROSEVALE KING K88  
ROSEVALE JADE D175  
**CREE NIAGARA N040 (PS)**  
CREE F083

ROSEVALE NODDY A18 (P)  
GYRANDA FRANKLIN F238 (P)  
GYRANDA C361 (P)  
**GYRANDA M495 (P)**  
GYRANDA ALCATRAZ A140 (P)  
GYRANDA F359 (P)  
GYRANDA X413

Notes: This is a standout young sire with real eye appeal. A well muscled tropical bull, plenty of frame and ample hindquarter. A powerful combination of growth and fertility. Dam M495 (P) has weaned 4/5 and her Dam F359 10/11.

		BWT	-	-
GROWTH	200D	+19	66%	
	400D	+26	65%	
	600D	+36	68%	
	MWT	+35	62%	
	MILK	+4	47%	
FERTILITY	SS	+2.8	68%	
	DTC	-5.3	50%	
CARCASE	EMA	+2.3	52%	
	RIB	-0.2	58%	
	RUMP	-0.7	58%	
	RBY	+0.7	47%	
	IMF	-0.3	58%	
\$ INDEX	PNS	+1.2	-	
	Flight Time	+0.08	66%	
\$ INDEX	DOM	+25		
	EXP	+34		

Dam C.I.: 487 days

Morphology: 92%

Wt \_\_\_\_\_

Sc \_\_\_\_\_

\$ \_\_\_\_\_



## GYRANDA SIRLOIN S218 (P)

'S' BULL  
GYR21MS218 15/9/2020 (24 mths)



ROSEVALE NODDY A18 (P)  
GYRANDA FRANKLIN F238 (P)  
GYRANDA C361 (P)  
**GYRANDA MULGA BILL M482 (P)**  
MARSTON MULTI SIRE  
GYRANDA Z131

EIDSVOLD STATION W62  
GYRANDA FREDERICK F190  
GYRANDA Z333  
**GYRANDA K103**  
DANGARFIELD PENROSE P194 (P)  
GYRANDA H339 (P)  
GYRANDA D217

Notes: An eye catching poll bull with an outstanding combination of growth and fertility. This placid son of Gyranda Mulga Bill has plenty of fertility credentials with a large scrotal, 81% morphology and a Dam K103 - who has weaned 5/6. Her Dam H339 weaned 8/9.

		BWT	-	-
GROWTH	200D	+14	67%	
	400D	+24	68%	
	600D	+36	70%	
	MWT	+61	62%	
	MILK	-1	50%	
FERTILITY	SS	+2.7	70%	
	DTC	-7.8	53%	
CARCASE	EMA	+2.5	53%	
	RIB	-0.4	60%	
	RUMP	-1.2	59%	
	RBY	+1.2	47%	
	IMF	+0.1	59%	
\$ INDEX	PNS	+4.8	-	
	Flight Time	+0.28	68%	
\$ INDEX	DOM	+28		
	EXP	+44		

Dam C.I.: 430 days

Morphology: 81%

Wt \_\_\_\_\_

Sc \_\_\_\_\_

\$ \_\_\_\_\_





## GYRANDA SCARFACE S204 (P)

GYR21MS204 18/8/2020 (25 mths) **'S' BULL**



	BWT	-	-
GROWTH	200D	+24	65%
	400D	+31	66%
	600D	+45	68%
	MWT	+73	60%
	MILK	-3	45%
FERTILITY	SS	+2.1	68%
	DTC	+3.3	50%
CARCASE	EMA	+5.5	51%
	RIB	-0.9	58%
	RUMP	-1.6	57%
	RBY	+2.3	46%
	IMF	-0.6	58%
PNS	-	-	
Flight Time	+0.13	66%	
\$ INDEX	DOM	+30	
	EXP	+34	

ROSEVALE DEMOCRAT G268 (P)  
GYRANDA KENNY K592 (PS)  
GYRANDA F445 (P)  
**BIARA NORTHAMPTON 7089(PS)**  
ROSEVALE BANDANNA F216  
BIARA 2046

ROSEVALE DEMOCRAT G268 (P)  
GYRANDA KIT K154 (P)  
GYRANDA A635 (P)  
**GYRANDA P275(P)**  
GYRANDA BOMBER B276  
GYRANDA G379  
GYRANDA V341

Dam C.I.: N/A

Morphology: 93%

Wt \_\_\_\_\_

Sc \_\_\_\_\_

\$ \_\_\_\_\_

**Notes:** Packing plenty of power in a long frame. Deep from flank to girth. Good sheath and lovely loose skin with a prominent hindquarter. This bull carries an EMA EBV in the top 1% of the breed, growth in the best 5% and a morphology of 93%. His Dam P275(P) only had the one calf but her dam G379 calved at three before weaning six calves in six years.



## GYRANDA SENTINEL S400 (P)

GYR21MS400 2/9/2020 (25 mths) **'S' BULL**



	BWT	-	-
GROWTH	200D	+13	67%
	400D	+25	68%
	600D	+36	69%
	MWT	+58	62%
	MILK	-2	52%
FERTILITY	SS	+0.7	70%
	DTC	-4.4	55%
CARCASE	EMA	+1.7	54%
	RIB	+0	60%
	RUMP	-0.3	59%
	RBY	+0.4	49%
	IMF	+0.3	60%
PNS	+4.7	-	
Flight Time	+0.08	68%	
\$ INDEX	DOM	+22	
	EXP	+34	

ROSEVALE BATTALION E622 (P)  
**ROWANLEA KLUGER K32 (P)**  
ROWANLEA E31 (P)

CREE MULTI SIRE  
CREE KOMATSU K144 (PP)  
CREE H107 (P)  
**GYRANDA N657 (P)**  
GYRANDA DYNAMIC D444 (P)  
GYRANDA J165  
GYRANDA B613

Dam C.I.: 372 days

Morphology: 80%

Wt \_\_\_\_\_

Sc \_\_\_\_\_

\$ \_\_\_\_\_

**Notes:** A beautifully presented package - growth, carcase and a lovely slick coat.





## GYRANDA SABRE S222 (P)

GYR21MS222 18/8/2020 (25 mths) **'S' BULL**



GROWTH	BWT	-	-
	200D	+9	66%
	400D	+21	68%
	600D	+28	69%
	MWT	+60	62%
MILK	MILK	+1	48%
	SS	+0.8	70%
FERTILITY	DTC	+1	53%
	EMA	+1.8	52%
CARCASE	RIB	-0.9	59%
	RUMP	-1.3	58%
	RBY	+1	47%
	IMF	+0.1	58%
\$ INDEX	PNS	+1.2	-
	Flight Time	+0.64	68%
	DOM	+17	
EXP	+22		



ROSEVALE NODDY A18 (P)  
 GYRANDA FRANKLIN F238 (P)  
 GYRANDA C361 (P)  
**GYRANDA MULGA BILL M482 (P)**  
 MARSTON MULTI SIRE  
 GYRANDA Z131

EIDSVOLD STATION ZORO Z188 (PS)  
 EIDSVOLD STATION FLETCH F24  
 GYRANDA ESA395  
**GYRANDA K593**  
 GYRANDA CRACKERJACK V532  
 GYRANDA C849  
 GYRANDA Z203

Dam C.I.: 362 days

Morphology: 86%

Wt \_\_\_\_\_

Sc \_\_\_\_\_

\$ \_\_\_\_\_

Notes: A superb bull with genuine sire potential. One of my picks of the sale. This beautiful dark bull with a tidy sheath, maintains a backline you could sleep on and carries a real sire presence. His dam Gyranda K593 calved at three, but has weaned five calves in the five years since.



## GYRANDA SALVADORE S522 (P)

GYR21MS522 14/11/2020 (22 mths) **'S' BULL**



GROWTH	BWT	-	-
	200D	+21	64%
	400D	+41	64%
	600D	+53	66%
	MWT	+76	60%
MILK	MILK	+1	50%
	SS	+3.2	66%
FERTILITY	DTC	-9.5	55%
	EMA	+1.7	52%
CARCASE	RIB	-0.3	58%
	RUMP	-0.5	57%
	RBY	+0.5	47%
	IMF	+0.6	58%
\$ INDEX	PNS	+5.2	-
	Flight Time	+0.36	68%
	DOM	+36	
EXP	+53		



ROSEVALE EMPIRE E464  
**ROSEVALE LENNOX L256 (PS)**  
 ROSEVALE SCARLET E247 (P)

EIDSVOLD STATION DONALD D34  
 GREENUP GIZZA G218 (P)  
 GREENUP DAPHNE D133 (P)  
**GYRANDA P247**  
 GYRANDA L553 (P)  
 GYRANDA C931

Dam C.I.: 402 days

Morphology: 82%

Wt \_\_\_\_\_

Sc \_\_\_\_\_

\$ \_\_\_\_\_

Notes: A very quiet, dark coated poll bull with an extraordinary array of data. Data that combines top 1% growth with top 5% of the breed for fertility, temperament and IMF. This is a younger bull, but will be one of the heavier bulls in the sale. His Dam P247 has weaned 3/3. Her Dam L553 (P) weaned 5/6 and her Dam C931 also calved at two and weaned thirteen calves in thirteen years.





## GYRANDA SERGEANT S112 (P) (AI)

**PUREBRED**

GYR21MS112 30/7/2020 (26 mths)



GROWTH	BWT	+0.4	70%
	200D	+15	66%
	400D	+26	65%
	600D	+33	67%
	MWT	+45	58%
MILK	MILK	+0	33%
	SS	+0.3	68%
FERTILITY	DTC	-0.5	43%
	EMA	+2.8	47%
CARCASE	RIB	+0	55%
	RUMP	-0.4	53%
	RBY	+0.2	41%
	IMF	+0.5	55%
PNS	PNS	-	-
	Flight Time	+0.09	65%
\$ INDEX	DOM	+18	
	EXP	+23	

KR 282/08 1273676  
 KR 189/11 1293527 [189/11]  
 KR 363/5 5A 1252806 [363/5]  
**RED DOC DIABLO 6306**  
 KR 189/11 1293527 [189/11]  
 RED DOC 3167 20132957 [3167]  
 O.X MACKENZIE 767 1294444

STRATHMORE STR/D182  
 ROCKINGHAM JACE J228  
 MACAIRE MCA/F41  
**GYRANDA P327**  
 GYRANDA D176  
 GYRANDA L715 (PS)  
 GYRANDA X485

Dam C.I.: 460 days

Morphology: 91%

Wt \_\_\_\_\_

Sc \_\_\_\_\_

\$ \_\_\_\_\_

**Notes:** An extraordinary Red Doc Galf with real presence. One of the heaviest bulls in the sale. Tidy sheath, medium frame & yet built like a keg. For early maturing calves carrying a top quality carcass - and plenty of it - these bulls are hard to go past & S112 is a superb example of the next generation tropical beef animal. Dam P327 (P) calved at three & has 2/2. Her Dam Gyranda L715 calved at two & has weaned 6/6 including a \$9500 bull sold to Alistair Chapman in 2020 & a \$26,000 bull sold to Garth Christianson last year.



## GYRANDA SAGE S302

**PUREBRED**

GYR21MS302 25/8/2020 (25 mths)



GROWTH	BWT	-	-
	200D	+23	56%
	400D	+36	58%
	600D	+56	60%
	MWT	+73	52%
MILK	MILK	+1	32%
	SS	+3.3	63%
FERTILITY	DTC	-4.7	39%
	EMA	+3.3	41%
CARCASE	RIB	-0.1	50%
	RUMP	-0.9	49%
	RBY	+1.3	37%
	IMF	-0.1	49%
PNS	PNS	-	-
	Flight Time	+0.05	59%
\$ INDEX	DOM	+34	
	EXP	+49	

CREE MULTI SIRE  
 CREE KOMATSU K144 (PP)  
 CREE H107 (P)  
**GYRANDA PUZZLE P596 (P)**  
 ROSEVALE NODDY A18 (P)  
 GYRANDA H285  
 GYRANDA C219

ROSEVALE BATTALLION E622 (P)  
 ROWANLEA KLUGER K32 (P)  
 ROWANLEA E31 (P)  
**GYRANDA PERTH P245 (P)**  
 GYRANDA ASSASSIN A406  
 GYRANDA F215  
 GYRANDA Y503

Dam C.I.: 358 days

Morphology: 90%

Wt \_\_\_\_\_

Sc \_\_\_\_\_

\$ \_\_\_\_\_

**Notes:** Long, tall & dark. This Puzzle son carries plenty of weight & the frame to keep growing out. Extraordinary growth data with the muscle to match it & scrotal in the top 1% of the breed. Big testicles unfortunately proved his downfall with the classifier putting it as the reason for rejection. His Dam Gyranda Perth P245 (P) is a show heifer with a perfect calving record, weaning three calves in three years & pregnant again. Her dam F215 has weaned 10/11 & will calve out for the last time this year with her 12th.





## GYRANDA SCIPIO S316 (P) (AI)

PUREBRED

GYR21MS316 4/8/2020 (26 mths)



KR 282/08 1273676  
 KR 189/11 1293527 [189/11]  
 KR 363/5 5A 1252806 [363/5]  
**RED DOC DIABLO 6306**  
 KR 189/11 1293527 [189/11]  
 RED DOC 3167 20132957 [3167]  
 O.X MACKENZIE 767 1294444

GYRANDA ALIBI A546  
 GYRANDA EDITOR E572  
 GYRANDA C653  
**GYRANDA N461 (P)**  
 GYRANDA ALCATRAZ A140 (P)  
 GYRANDA F767  
 GYRANDA D229 (P)

**Notes:** This young sire is one of my picks of the Red Doc. line for 2022. A beautifully quiet bull, but just a meat machine! Built like a barrel and likely to be one of the heaviest bulls in the sale. He has the growth EBV's to back it up (top 2% of the breed) and exceptional carcas data including IMF in the top 5% of the breed. Dam N461 (P) has weaned 3/4 to date.

GROWTH	BWT	-	-
	200D	+25	62%
	400D	+39	64%
	600D	+51	64%
	MWT	+60	56%
MILK	MILK	+0	31%
	SS	+0.7	67%
FERTILITY	DTC	+0.5	42%
	EMA	+3.2	46%
CARCASE	RIB	+0.3	51%
	RUMP	+0	50%
	RBY	-0.2	39%
	IMF	+0.6	49%
PNS	PNS	-	-
	Flight Time	+0.15	64%
\$ INDEX	DOM	+24	
	EXP	+30	

Dam C.I.: 375 days

Morphology: 88%

Wt \_\_\_\_\_

Sc \_\_\_\_\_

\$ \_\_\_\_\_



## GYRANDA SAINT S116 (PP) (AI)

PUREBRED

GYR21MS116 2/8/2020 (26 mths)



KR 282/08 1273676  
 KR 189/11 1293527 [189/11]  
 KR 363/5 5A 1252806 [363/5]  
**RED DOC DIABLO 6306**  
 KR 189/11 1293527 [189/11]  
 RED DOC 3167 20132957 [3167]  
 O.X MACKENZIE 767 1294444

ROSEVALE EMPIRE E464  
 ROSEVALE LENNOX L256 (PS)  
 ROSEVALE SCARLET E247 (P)  
**GYRANDA P535 (P)**  
 EIDSVOLD STATION FLETCH F24  
 GYRANDA K487 (P)  
 GYRANDA F291 (P)

**Notes:** Massive growth & packing muscle from tip to toe. This is a lighter coloured, slick coated sire with a lovely underline & topline you could sleep on. S116 has long been one of my picks & would almost certainly have stayed in the stud but for the politics of a breed society. This is a great example of the genetics Red Doc Diablo brings to Australia. A very stylish bull, early maturing with growth data in the top 1% of the breed & homozygous poll to boot. Dam P535 only had the one calf while her dam Gyranda K487 weaned 5/6.

GROWTH	BWT	+4.4	69%
	200D	+28	66%
	400D	+40	65%
	600D	+55	68%
	MWT	+71	58%
MILK	MILK	-1	30%
	SS	+0.6	67%
FERTILITY	DTC	+5.1	43%
	EMA	+4	48%
CARCASE	RIB	-0.6	56%
	RUMP	-1.1	55%
	RBY	+0.9	42%
	IMF	+0.1	56%
PNS	PNS	-	-
	Flight Time	+0.13	65%
\$ INDEX	DOM	+26	
	EXP	+29	

Dam C.I.: N/A

Morphology: 93%

Wt \_\_\_\_\_

Sc \_\_\_\_\_

\$ \_\_\_\_\_





# GYRANDA SOMALIA S630 (P) (AI)

PUREBRED

GYR21MS630 1/9/2020 (25 mths)



GROWTH	BWT	-	-
	200D	+29	60%
	400D	+43	57%
	600D	+56	58%
	MWT	+67	50%
MILK	MILK	+3	30%
	SS	+1.3	65%
FERTILITY	DTC	+3.4	39%
	EMA	+4.2	42%
CARCASE	RIB	+0.2	46%
	RUMP	-0.4	45%
	RBY	+0.2	35%
	IMF	+0.4	46%
PNS	PNS	-	-
	Flight Time	+0	55%
\$ INDEX	DOM	+25	
	EXP	+29	

KR 282/08 1273676  
 KR 189/11 1293527 [189/11]  
 KR 363/5 5A 1252806 [363/5]  
**RED DOC DIABLO 6306**  
 KR 189/11 1293527 [189/11]  
 RED DOC 3167 20132957 [3167]  
 O.X MACKENZIE 767 1294444

WARENDA D696 (P)  
 GYRANDA LONGSHOT L110(P)(AI)  
 GYRANDA H663  
**GYRANDA P163(P)**  
 GYRANDA JEREMIAH J164 (PS)  
 GYRANDA M109 (P)  
 GYRANDA K463

Dam C.I.: 369 days

Morphology: 76%

Wt \_\_\_\_\_

Sc \_\_\_\_\_

\$ \_\_\_\_\_

Notes: Dark & mysterious. Proud, powerful & full of promise. Somalia is something special. Consistently one of the heaviest bulls since branding with a hindquarter that has to be seen to be believed. This Red Doc Diablo power keg is a medium framed bull as wide as house, neat in the underline & good to handle. His EBV data ranks him at the very top of the breed for growth, muscle & IMF - a rare combination. Dam P163 (P) calved at three & has weaned 2/2 since.



# GYRANDA SARDONIC S124 (P)

'S' BULL

GYR21MS124 3/9/2020 (25 mths)



GROWTH	BWT	-0.8	75%
	200D	+13	67%
	400D	+27	67%
	600D	+34	68%
	MWT	+34	60%
MILK	MILK	+1	44%
	SS	+1.8	68%
FERTILITY	DTC	-4.7	50%
	EMA	+3.7	52%
CARCASE	RIB	+0.7	59%
	RUMP	+0.4	58%
	RBY	+0.6	46%
	IMF	-0.1	59%
PNS	PNS	-	-
	Flight Time	-0.01	66%
\$ INDEX	DOM	+26	
	EXP	+33	



WARENDA D696 (P)  
 GYRANDA LONGSHOT L110(P)(AI)  
 GYRANDA H663  
**GYRANDA PAYMASTER P156 (P)**  
 GYRANDA EDITOR E572  
 GYRANDA M513  
 GYRANDA F1049 (P)

TOOKEY CREEK GURU G34 (P)  
 GYRANDA LORAX L794 (PP)  
 GYRANDA J359  
**GYRANDA Q613 (P)**  
 ROWANLEA DUNTROON D24 (PS)  
 GYRANDA J363  
 GYRANDA Y243

Dam C.I.: 381 days

Morphology: 89%

Wt \_\_\_\_\_

Sc \_\_\_\_\_

\$ \_\_\_\_\_

Notes: A quiet, dark coated poll bull with a clean sheath. A low birthweight, high growth son of Gyranda Paymaster with plenty of potential. Exceptional birthweight, growth, fertility and carcass data. His Dam Gyranda Q614 (P) maintains a perfect record, weaning two from two, while her Dam J363 is a Rowanlea Duntroon cow that has weaned 6/7 after calving as a two year old.





## GYRANDA SENTINEL S118 (P) (AI)

PUREBRED

GYR21MS118 4/8/2020 (26 mths)



KR 282/08 1273676  
 KR 189/11 1293527 [189/11]  
 KR 363/5 5A 1252806 [363/5]  
**RED DOC DIABLO 6306**  
 KR 189/11 1293527 [189/11]  
 RED DOC 3167 20132957 [3167]  
 O.X MACKENZIE 767 1294444

TOOKEY CREEK GURU G34 (P)  
 GYRANDA LORAX L794 (PP)  
 GYRANDA J359  
**GYRANDA P611(P)**  
 GYRANDA COMMANDER C240  
 GYRANDA F717  
 GYRANDA Z133

GROWTH	BWT	+3.6	69%
	200D	+24	66%
	400D	+37	65%
	600D	+51	67%
	MWT	+47	58%
MILK	MILK	+2	33%
	SS	-0.1	68%
FERTILITY	DTC	+2.6	43%
	EMA	+3.5	48%
CARCASE	RIB	+0.5	55%
	RUMP	+0.5	53%
	RBY	-0.1	41%
	IMF	+0.3	55%
PNS	PNS	-	-
	Flight Time	+0.15	65%
\$ INDEX	DOM	+21	
	EXP	+25	

Dam C.I.: N/A

Morphology: 96%

Wt \_\_\_\_\_

Sc \_\_\_\_\_

\$ \_\_\_\_\_

**Notes:** A standout sire that should be peaking on sale day to be one of the real finds of 2022. A Red Doc Diablo special. Dark coat, tidy sheath, plenty of weight and carcass, and perhaps the quietest bull in the draft. I recall having to push him out of the way as a weaner...and nothing has changed. This is a standout bull, with the data to back it up. The first and only calf of dam P611 (P).



## GYRANDA SPEARHEAD S404 (P)

'S' BULL

GYR21MS404 21/9/2020 (24 mths)



ROSEVALE DEMOCRAT G268 (P)  
 GYRANDA KENNY K592 (PS)  
 GYRANDA F445 (P)  
**BIARA NORTHAMPTON 7089(PS)**  
 ROSEVALE BANDANNA F216  
 BIARA 2046

DANGARFIELD DF/ULTRA  
 DANGARFIELD X-CEL X325 (P)  
 DANGARFIELD DF/0514  
**GYRANDA P169 (P)**  
 GYRANDA FRANKLIN F238 (P)  
 GYRANDA M495 (P)  
 GYRANDA F359 (P)

GROWTH	BWT	-	-
	200D	+12	64%
	400D	+21	65%
	600D	+24	66%
	MWT	+26	59%
MILK	MILK	-1	41%
	SS	+2.4	67%
FERTILITY	DTC	-10.4	47%
	EMA	+1.2	49%
CARCASE	RIB	+1.1	57%
	RUMP	+0.8	56%
	RBY	+0.3	44%
	IMF	+0.1	57%
PNS	PNS	-	-
	Flight Time	-0.01	65%
\$ INDEX	DOM	+26	
	EXP	+36	

Dam C.I.: 381 days

Morphology: 75%

Wt \_\_\_\_\_

Sc \_\_\_\_\_

\$ \_\_\_\_\_

**Notes:** A real pocket rocket. This smaller framed, but extremely heavy polled bull is the ideal efficient commercial package. Slick, clean coat, tidy sheath and plenty of character. Fertility data is right at the top of the breed. His dam P169 calved at three and has weaned 2/2.



## GYRANDA SAM S166 (P)

'S' BULL  
GYR21MS166 13/10/2020 (23 mths)



WARENDA D696 (P)  
GYRANDA LONGSHOT L110(P)(AI)  
GYRANDA H663  
**GYRANDA PAYMASTER P156 (P)**  
GYRANDA EDITOR E572  
GYRANDA M513  
GYRANDA F1049 (P)

DANGARFIELD PENROSE P194 (P)  
GYRANDA MOBY DICK M224 (P)  
GYRANDA F249 (P)  
**GYRANDA Q345 (P)**  
GYRANDA ENIGMA E124  
GYRANDA L439 (P)  
GYRANDA E211

Notes: A beautiful dark, slick coated bull with a tidy sheath. Deep in the girth, exhibiting superb muscling throughout. Backed by growth and carcass data at the very top of the breed combined with average birth weight. Dam Q345 (P) missed her rebreed but is pregnant again.

GROWTH	BWT	+1.4	74%
	200D	+22	67%
	400D	+30	66%
	600D	+50	68%
	MWT	+52	60%
MILK	MILK	-1	40%
	SS	+1	67%
FERTILITY	DTC	+2.9	47%
	EMA	+3.9	51%
CARCASS	RIB	+0.1	58%
	RUMP	-0.1	58%
	RBY	+0.7	46%
	IMF	-0.3	58%
PNS	PNS	-	-
	Flight Time	+0.12	66%
\$ INDEX	DOM	+21	
	EXP	+28	

Dam C.I.: N/A

Morphology: 91%

Wt \_\_\_\_\_

Sc \_\_\_\_\_

\$ \_\_\_\_\_



## GYRANDA SQUIRE S580 (PP)

'S' BULL  
GYR21MS580 30/10/2020 (23 mths)



ROSEVALE BATTALION E622 (P)  
**ROWANLEA KLUGER K32 (P)**  
ROWANLEA E31 (P)

ROSEVALE GUMPER X546 (P)  
GYRANDA DEADLY D178 (PS)  
GYRANDA A157  
**GYRANDA K705 (P)**  
GYRANDA ASSASSIN A406  
GYRANDA F215  
GYRANDA Y503

Notes: A homozygous poll sire with that sought after combination of growth and fertility. A younger bull retaining plenty of frame to grow into as he finishes growing over the coming year. Dam K705 has weaned five calves, including a \$14,000 bull sold to David Hutchinson and his family at Moura.

GROWTH	BWT	-	-
	200D	+16	67%
	400D	+27	68%
	600D	+33	70%
	MWT	+40	63%
MILK	MILK		
	SS	+0.7	70%
FERTILITY	DTC	-2.4	57%
	EMA	+2.8	54%
CARCASS	RIB	-0.4	61%
	RUMP	-0.9	61%
	RBY	+0.7	49%
	IMF	-0.1	59%
PNS	PNS	+4.2	-
	Flight Time	+0.09	69%
\$ INDEX	DOM	+23	
	EXP	+27	

Dam C.I.: 469 days

Morphology: 79%

Wt \_\_\_\_\_

Sc \_\_\_\_\_

\$ \_\_\_\_\_





## GYRANDA SKIPPER S106 (PP) (AI)

PUREBRED

GYR21MS106 25/7/2020 (26 mths)



RDF 8052 1274224  
 KR 800/11 1293846 [800/11]  
 KR 307/06 4B 1259421 [307/06]  
**KING RANCH 921/15**  
 WAUKARAU GOLD MINE 6151 99904724  
 KR 110N/09 110/09 N6 1280743 [110/09]  
 KR 23/001 1229754

TYNDALE REPLAY 167 (AI) (P)  
 GYRANDA GARFIELD G302 (P)  
 GYRANDA Z131  
**GYRANDA P437 (PP)**  
 SANTA GERTRUDIS MULTIPLE SIRE  
 SANTA GERTRUDIS MULTIPLE DAM  
 SANTA GERTRUDIS MULTIPLE DAM

GROWTH	BWT	-	-
	200D	+8	59%
	400D	+12	60%
	600D	+18	63%
	MWT	+24	54%
MILK	MILK	-	-
	SS	-0.4	65%
FERTILITY	DTC	+2.8	38%
	EMA	+1	43%
CARCASS	RIB	+0.6	52%
	RUMP	+0.3	50%
	RBV	-0.8	38%
	IMF	+1	52%
PNS	PNS	-	-
	Flight Time	+0.02	60%
\$ INDEX	DOM	+1	
	EXP	+3	

Dam C.I.: N/A

Morphology: 81%

Wt \_\_\_\_\_

Sc \_\_\_\_\_

\$ \_\_\_\_\_

Notes: A solid commercial prospect. Big, quiet and packing real carcass. This lighter coloured bull is by USA Sire King Ranch El Rey and carries some of the highest IMF in the breed to complement his good growth and PP status. Dam Gyranda P437 (PP) calved at three and has had 2/2.



## GYRANDA S564 (P)

'S' BULL

GYR21MS564 18/11/2020 (22 mths)



ROSEVALE GALLIPOLI G218 (P)  
 ROSEVALE GALLIPOLI K468 (P)  
 ROSEVALE BRIDE G451 (P)  
**GREENUP PASCAL P356 (P)**  
 DANGARFIELD TYCOON T190 (P)  
 GREENUP K117 (P)  
 GREENUP Y73

CANOWINDRA CENTURION (P)  
 GYRANDA DYNAMIC D444 (P)  
 GYRANDA 82V  
**GYRANDA M413**  
 ROSEVALE NODDY A18 (P)  
 GYRANDA G327  
 GYRANDA C183

GROWTH	BWT	-	-
	200D	+27	63%
	400D	+42	65%
	600D	+62	66%
	MWT	+91	60%
MILK	MILK	+2	45%
	SS	+2.6	68%
FERTILITY	DTC	-3.6	48%
	EMA	+5.1	50%
CARCASS	RIB	+1.2	58%
	RUMP	+1.2	57%
	RBV	+1.4	45%
	IMF	-0.1	55%
PNS	PNS	-	-
	Flight Time	+0.27	65%
\$ INDEX	DOM	+39	
	EXP	+53	

Dam C.I.: 387 days

Morphology: 72%

Wt \_\_\_\_\_

Sc \_\_\_\_\_

\$ \_\_\_\_\_

Notes: A lighter coloured coat. Tremendous weight & muscle in a medium frame. This bull carries the highest 600 day growth EBV figure in the sale, & is the third highest in the breed for the 2021 drop. His Eye Muscle EBV is similarly at the very top of the breed. What is extraordinary is that S564 also carries fat EBVs in the top 10% of the breed & fertility in the top 30%. This Greenup Pascal calf is another example of just what we are able to produce in the latest generation of genetics. Dam Gyranda M413 has weaned 3/4.



## GYRANDA S448

GYR21MS448 16/9/2020 (24 mths)

'S' BULL

ROSEVALE BATTALLION E622 (P)

### ROWANLEA KLUGER K32 (P)

ROWANLEA E31 (P)

CANOWINDRA CENTURION (P)  
GYRANDA DYNAMIC D444 (P)  
GYRANDA 82V

### GYRANDA J157

GYRANDA COLUMBUS V290  
GYRANDA A571  
MARSTON FP320

Notes: A dark, large framed bull with a very tidy sheath. Long and quiet, this Kluger calf retains some excellent fat data including IMF in the top 1% of the breed. Dam J157 has weaned 7/8.

Dam C.I.: 429 days Morphology: 96%

Wt \_\_\_\_\_ Sc \_\_\_\_\_

		GROWTH	
GROWTH	BWT	-	-
	200D	+16	67%
	400D	+21	68%
	600D	+31	70%
	MWT	+47	64%
MILK	MILK	+0	55%
	SS	+1.3	70%
FERTILITY	DTC	-1.3	56%
	EMA	+1.3	55%
CARCASE	RIB	+1.1	61%
	RUMP	+1.2	60%
	RBY	-0.8	50%
	IMF	+0.8	60%
	PNS	+4.8	-
\$ INDEX	Flight Time	+0.23	69%
	DOM	+10	
	EXP	+19	

\$



## GYRANDA S130

GYR21MS130 11/9/2020 (24 mths)

'S' BULL



WARENDA D696 (P)  
GYRANDA LONGSHOT L110(P)(AI)  
GYRANDA H663

### GYRANDA PAYMASTER P156 (P)

GYRANDA EDITOR E572  
GYRANDA M513  
GYRANDA F1049 (P)

ROSEVALE BATTALLION E622 (P)  
ROWANLEA KLUGER K32 (P)  
ROWANLEA E31 (P)

### GYRANDA Q523

GREENUP GIZZA G218 (P)  
GYRANDA K159 (P)  
GYRANDA Z243

Notes: A low birthweight, high growth bull with excellent muscle definition and frame. Like all of the Paymaster calves this dark coated young bull is quiet and carries excellent data throughout. Dam Q523 weaned this bull as a two year old and has gone on to wean another to be 2/2. Her Dam K159 weaned 4/5.

Dam C.I.: 403 days Morphology: 90%

Wt \_\_\_\_\_ Sc \_\_\_\_\_

		GROWTH	
GROWTH	BWT	+0.3	74%
	200D	+17	67%
	400D	+33	66%
	600D	+45	68%
	MWT	+44	60%
MILK	MILK	+2	44%
	SS	+1.7	68%
FERTILITY	DTC	+2.8	49%
	EMA	+3.5	51%
CARCASE	RIB	-0.7	58%
	RUMP	-1.4	57%
	RBY	+0.7	46%
	IMF	-0.2	58%
	PNS	-	-
\$ INDEX	Flight Time	+0.07	66%
	DOM	+22	
	EXP	+25	

\$



## GYRANDA S570

GYR21MS570 23/10/2020 (23 mths)

'S' BULL



WIGHTFIELDS DOWNPOUR G21 (P)  
ROSEVALE KING K88  
ROSEVALE JADE D175  
**CREE NIAGARA N040 (PS)**

CREE F083

CANOWINDRA CENTURION (P)  
GYRANDA DYNAMIC D444 (P)  
GYRANDA 82V  
**GYRANDA M297**

TYNDALE REPLAY 167 (AI) (P)  
GYRANDA G319  
GYRANDA Y303

Notes: A solid, muscly bull with tidy sheath and a clean coat. Excellent growth and fertility data. Dam M297 has weaned 4/5.

		GROWTH	
GROWTH	BWT	-	-
	200D	+24	64%
	400D	+34	65%
	600D	+49	67%
	MWT	+66	60%
MILK	MILK	+5	46%
	SS	+1.7	68%
FERTILITY	DTC	-1	49%
	EMA	+2.6	51%
CARCASE	RIB	+0.6	58%
	RUMP	+0.5	57%
	RBY	+0	46%
	IMF	+0.1	56%
	PNS	-0.2	-
\$ INDEX	Flight Time	+0.11	65%
	DOM	+22	
	EXP	+32	

Dam C.I.: 532 days

Morphology: 86%

Wt \_\_\_\_\_

Sc \_\_\_\_\_

\$





# GYRANDA S410

**'S' BULL**  
GYR21MS410 21/9/2020 (24 mths)



GROWTH	BWT	-	-
	200D	+19	65%
	400D	+23	66%
	600D	+39	68%
	MWT	+62	62%
MILK	MILK	+2	46%
	SS	+1.5	69%
FERTILITY	DTC	-4.6	49%
	EMA	+1.8	51%
CARCASE	RIB	-0.5	59%
	RUMP	-1.1	58%
	RBY	+1	46%
	IMF	-0.3	57%
PNS	PNS	-2.2	-
	Flight Time	+0.05	65%
\$ INDEX	DOM	+22	
	EXP	+37	

WIGHTFIELDS DOWNPOUR G21 (P)  
ROSEVALE KING K88  
ROSEVALE JADE D175  
**CREE NIAGARA N040 (PS)**  
CREE F083

GYRANDA B422  
ROWANLEA HARRISON H74  
ROWANLEA ANITA A07  
**GYRANDA L287 (P)**  
EIDSVOLD STATION A166 (PS)  
GYRANDA E755 (P)  
GYRANDA B183 (PS)

Dam C.I.: 366 days

Morphology: 60%

Wt \_\_\_\_\_

Sc \_\_\_\_\_

\$ \_\_\_\_\_

Notes: Deep and thick throughout with a very tidy underline and slick coat. Great growth, fertility and temperament. Dam L287 (P) calved at three but has weaned 5/5 since.



# GYRANDA S452 (PP)

**'S' BULL**  
GYR21MS452 20/9/2020 (24 mths)



GROWTH	BWT	-	-
	200D	+9	61%
	400D	+14	62%
	600D	+24	64%
	MWT	+38	56%
MILK	MILK	-1	40%
	SS	+2.3	67%
FERTILITY	DTC	-7.4	45%
	EMA	+0	47%
CARCASE	RIB	+0.7	55%
	RUMP	+0.2	54%
	RBY	+0.4	43%
	IMF	+0.5	55%
PNS	PNS	+4	-
	Flight Time	+0	63%
\$ INDEX	DOM	+17	
	EXP	+31	



ROSEVALE EMPIRE E464  
**ROSEVALE LENNOX L256 (PS)**  
ROSEVALE SCARLET E247 (P)

SANTA GERTRUDIS MULTIPLE SIRE  
**SANTA GERTRUDIS MULTIPLE DAM**  
SANTA GERTRUDIS MULTIPLE SIRE  
SANTA GERTRUDIS MULTIPLE DAM  
SANTA GERTRUDIS MULTIPLE DAM

Dam C.I.: N/A

Morphology: 93%

Wt \_\_\_\_\_

Sc \_\_\_\_\_

\$ \_\_\_\_\_



Notes: A quiet, dark coated power pack. Deep and wide with fantastic fertility, good fats and PP to add into the equation. His 93% morphology is what you would expect from his sire line which harks back to Rosevale Empire E464.



CREE MULTI SIRE  
CREE KOMATSU K144 (PP)  
CREE H107 (P)  
**GYRANDA PLATO P368 (PP)**  
GYRANDA ALFIE A280 (P)  
GYRANDA F259 (P)  
GYRANDA B709

EIDSVOLD STATION A166 (PS)  
GYRANDA ENIGMA E124  
GYRANDA B303  
**GYRANDA L409**  
EIDSVOLD STATION B296  
GYRANDA F229  
GYRANDA C213

GROWTH	BWT	-	-
	200D	+13	65%
	400D	+19	67%
	600D	+27	68%
	MWT	+19	62%
MILK	MILK	+1	46%
	SS	+1	69%
FERTILITY	DTC	-11.2	50%
	EMA	+4.3	52%
CARCASS	RIB	+2	59%
	RUMP	+2.4	58%
	RBV	+0.5	46%
	IMF	+0.8	58%
PNS	PNS	+1.4	-
	Flight Time	+0.17	65%
\$ INDEX	DOM	+28	
	EXP	+40	

Dam C.I.: 370 days

Morphology: 88%

Wt \_\_\_\_\_

Sc \_\_\_\_\_

\$ \_\_\_\_\_

Notes: A big framed, poll scur bull with a slick coat & tidy sheath. Well muscled & extraordinary fertility data. This might come into focus when you understand that his dam is one of our Elite cows & has a perfect calving of 6/6. L409 also has quite a record. Her bull calf from last year R110 sold for \$45,000 to Andrew & Kate Chapman, which would have been a Gyranda record except that Rosevale paid \$85,000 for another bull in the same sale.

GYR21MS616 18/12/2020 (21 mths)

**'S' BULL**

ROSEVALE MATLOCK W20  
DANGARFIELD PENROSE P194 (P)  
DANGARFIELD 7064  
**GYRANDA MOBY DICK M224 (P)**  
ROSEVALE GUMPER X546 (P)  
GYRANDA F249 (P)  
GYRANDA V285  
  
EIDSVOLD STATION DONALD D34  
GREENUP GIZZA G218 (P)  
GREENUP DAPHNE D133 (P)  
**GYRANDA N327**  
ROWANLEA DUNTRON D24 (PS)  
GYRANDA G757  
GYRANDA B237

Notes: A stylish polled bull with plenty of length, clean coat and a good sheath. A great combination of growth, fertility and fat EBVs with some of the best flight time data in the sale. Dam N327 has weaned 3/4. Her Dam G757 weaned ten calves in ten years and is actually pregnant again to calve out her 11th and last calf this year.

Dam C.I.: 412 days Morphology: 50%

Wt \_\_\_\_\_ Sc \_\_\_\_\_

GROWTH	BWT	-	-
	200D	+14	64%
	400D	+22	64%
	600D	+33	65%
	MWT	+36	60%
MILK	MILK	+0	50%
	SS	+1.4	60%
FERTILITY	DTC	-5.6	54%
	EMA	+1.8	52%
CARCASS	RIB	+1.7	57%
	RUMP	+1.9	56%
	RBV	+0.3	46%
	IMF	-0.1	56%
PNS	PNS	+2.3	-
	Flight Time	+0.54	66%
\$ INDEX	DOM	+22	
	EXP	+33	

\$ \_\_\_\_\_

GYR21MS146 27/9/2020 (24 mths)

**'S' BULL**

ROSEVALE DEMOCRAT G268 (P)  
GYRANDA KIT K154 (P)  
GYRANDA A635 (P)  
**GYRANDA Q186 (PS)**  
GYRANDA GARWOOD G684 (PS)  
GYRANDA M611  
GYRANDA K145 (PS)  
  
ROSEVALE NODDY A18 (P)  
GYRANDA HOMER H344 (P)  
GYRANDA FANTASIA Y579  
**GYRANDA QUININE Q475 (P)**  
EIDSVOLD STN DANCER D164 (PS)  
GYRANDA H527  
GYRANDA F473

Notes: A lighter coloured, growthy bull. Tall and well defined with plenty of frame to fill out. Dam Gyranda Quinine Q475 (P) has weaned 2/2 and her Dam H527 weaned 9/10.

Dam C.I.: 388 days Morphology: 78%

Wt \_\_\_\_\_ Sc \_\_\_\_\_

GROWTH	BWT	+3.7	73%
	200D	+25	62%
	400D	+37	63%
	600D	+43	61%
	MWT	+51	55%
MILK	MILK	+2	42%
	SS	+2.7	67%
FERTILITY	DTC	+9.6	47%
	EMA	+3.3	47%
CARCASS	RIB	-0.1	56%
	RUMP	-0.5	55%
	RBV	+0.8	43%
	IMF	-0.6	55%
PNS	PNS	-	-
	Flight Time	+0.01	55%
\$ INDEX	DOM	+20	
	EXP	+12	

\$ \_\_\_\_\_





## GYRANDA S346 (P)

GYR21MS346 19/8/2020 (25 mths)

'S' BULL

WIGHTFIELDS DOWNPOUR G21 (P)  
ROSEVALE KING K88  
ROSEVALE JADE D175

### CREE NIAGARA N040 (PS)

CREE F083

EIDSVOLD STATION V162 (PS)  
EIDSVOLD STATION A166 (PS)  
EIDSVOLD STATION U85

### GYRANDA M331

EIDSVOLD STATION ESX476  
GYRANDA C283  
GYRANDA W117

Notes: A framey bull carrying loose skin and a clean coat. Excellent fertility and carcase data. Dam M331 weaned 4/5 and her Dam C283 weaned 10/10.

Dam C.I.: 478 days Morphology: 83%

Wt \_\_\_\_\_ Sc \_\_\_\_\_

		GROWTH	
GROWTH	BWT	-	-
	200D	+17	65%
	400D	+22	63%
	600D	+31	66%
	MWT	+50	59%
	MILK	+1	47%
FERTILITY	SS	+1.7	58%
	DTC	-10.9	50%
CARCASE	EMA	+2.4	50%
	RIB	+0.2	55%
	RUMP	-0.3	55%
	RBY	+0.7	45%
	IMF	+0.3	54%
	PNS	+0.2	-
\$ INDEX	DOM	+27	
	EXP	+43	

\$



## GYRANDA S162

GYR21MS162 6/10/2020 (24 mths)

'S' BULL

ROSEVALE BATTALION F446 (P)  
GYRANDA MEDICINE MAN M236(P)  
GYRANDA F349 (P)

### GYRANDA QUICKFIRE Q600 (PS)

TYNDALE REPLAY 167 (AI) (P)  
GYRANDA F461 (P)  
GYRANDA B461

ROSEVALE BATTALION E622 (P)  
ROWANLEA KLUGER K32 (P)  
ROWANLEA E31 (P)

### GYRANDA QUINTANA Q517 (P)

GYRANDA GAMBLE G680 (P)  
GYRANDA K803 (PS)  
GYRANDA F789 (P)

Notes: Long bull with a tidy sheath and great hindquarter. Exceptional data throughout, low birthweight, high growth, plenty of carcase. Dark coat and loose skin. Dam Gyranda Quintana Q517 (P) has weaned 2/2 and her Dam K803 4/5.

Dam C.I.: N/A Morphology: 98%

Wt \_\_\_\_\_ Sc \_\_\_\_\_

		GROWTH	
GROWTH	BWT	+1	70%
	200D	+16	56%
	400D	+30	58%
	600D	+38	54%
	MWT	-	-
	MILK	+2	30%
FERTILITY	SS	+3.8	63%
	DTC	-6.2	38%
CARCASE	EMA	+3	39%
	RIB	+0.9	50%
	RUMP	+0.4	49%
	RBY	+0.3	36%
	IMF	+0.6	50%
	PNS	-	-
\$ INDEX	DOM	+28	
	EXP	+37	

\$



## GYRANDA S140 (P)

GYR21MS140 22/9/2020 (24 mths)

'S' BULL

ROSEVALE NODDY A18 (P)  
GYRANDA FRANKLIN F238 (P)  
GYRANDA C361 (P)

### GYRANDA MULGA BILL M482 (P)

MARSTON MULTI SIRE  
GYRANDA Z131

GYRANDA C834  
GYRANDA FITZROY F322  
GYRANDA X483

### GYRANDA J209

GYRANDA COLUMBUS V290  
GYRANDA A539 (P)  
MARSTON J1812 (P)

Notes: A quiet, stylish poll bull with a slick coat, breed character and a tidy sheath. Dam J209 calved at two and has weaned 7/8. Her Dam Gyranda A539 weaned 12/12 for an unblemished record.

Dam C.I.: 427 days Morphology: 72%

Wt \_\_\_\_\_ Sc \_\_\_\_\_



		GROWTH	
GROWTH	BWT	+0.7	69%
	200D	+9	68%
	400D	+13	68%
	600D	+19	70%
	MWT	+25	63%
	MILK	+1	50%
FERTILITY	SS	+1.9	70%
	DTC	+4.3	51%
CARCASE	EMA	+1.9	53%
	RIB	-0.6	60%
	RUMP	-1.6	59%
	RBY	+1.5	47%
	IMF	-0.5	59%
	PNS	-0.9	-
\$ INDEX	DOM	+12	
	EXP	+10	

\$





JESTER J20 (AI) (P)  
WARENDA D696 (P)  
KIT KAT K19 (P)  
**GYRANDA LONGSHOT L110(P)(AI)**  
GYRANDA BOMBER B276  
GYRANDA H663  
GYRANDA Z537

WARRILLEE W/684 (P)  
GYRANDA CESAR C422 (PS)  
GYRANDA A219  
**GYRANDA L143**  
EIDSVOLD STATION W62  
GYRANDA E501  
GYRANDA V245

**Notes:** A medium framed bull, lighter coloured with a sleek coat. A much younger bull than his mates and could fly under the radar. He carries, however, some exceptional data for growth, fertility and IMF. Given that he is a Gyranda Longshot calf he is likely to be a good birthweight bull as well. Dam L143 is one of our AA cows and has weaned five calves in five years.

	BWT	-	-
GROWTH	200D	+16	65%
	400D	+28	68%
	600D	+37	66%
	MWT	+53	63%
	MILK	+3	51%
FERTILITY	SS	+2.1	70%
	DTC	-3.2	55%
CARCASE	EMA	+2.2	54%
	RIB	-0.2	61%
	RUMP	-0.9	60%
	RBY	+0.5	49%
	IMF	+0.4	60%
\$ INDEX	PNS	+1.4	-
	Flight Time	+0.01	63%
\$ INDEX	DOM	+22	
	EXP	+31	

Dam C.I.: 358 days

Morphology: 83%

Wt \_\_\_\_\_

Sc \_\_\_\_\_

\$ \_\_\_\_\_



ROSEVALE NODDY A18 (P)  
GYRANDA HOMER H344 (P)  
GYRANDA FANTASIA Y579  
**GYRANDA MANCHESTER M516 (P)**  
EIDSVOLD STATION W650  
GYRANDA B851

RAYTEK DEMOCRAT D46 (P)  
ROSEVALE DEMOCRAT G268 (P)  
ROSEVALE HONEY Y165  
**GYRANDA M681 (P)**  
GYRANDA BOMBER B276  
GYRANDA H663  
GYRANDA Z537

**Notes:** Tall, clean coated bull with a good combination of growth, fertility and carcass traits. Dam M681 (P) calved at two and has weaned four calves in the last five years.

	BWT	-	-
GROWTH	200D	+12	65%
	400D	+20	65%
	600D	+27	67%
	MWT	+38	60%
	MILK	-1	45%
FERTILITY	SS	+0.5	67%
	DTC	-0.6	50%
CARCASE	EMA	+2.9	51%
	RIB	+0.4	58%
	RUMP	+0.1	57%
	RBY	+0.8	45%
	IMF	+0.1	56%
\$ INDEX	PNS	-1	-
	Flight Time	-0.03	67%
\$ INDEX	DOM	+19	
	EXP	+23	

Dam C.I.: 477 days

Morphology: 78%

Wt \_\_\_\_\_

Sc \_\_\_\_\_

\$ \_\_\_\_\_





ROSEVALE GALLIPOLI G218 (P)  
ROSEVALE GALLIPOLI K468 (P)  
ROSEVALE BRIDE G451 (P)  
**GREENUP PASCAL P356 (P)**  
DANGARFIELD TYCOON T190 (P)  
GREENUP K117 (P)  
GREENUP Y73

GYRANDA CRACKERJACK V532  
GYRANDA BANJO B256  
GYRANDA V461  
**GYRANDA J551**  
EIDSVOLD STATION ESX476  
GYRANDA D347  
GYRANDA A607

GROWTH	BWT	-	-
	200D	+10	64%
	400D	+26	65%
	600D	+29	67%
	MWT	+52	60%
MILK	MILK	+0	47%
	SS	+1	69%
FERTILITY	DTC	-7.3	48%
	EMA	+4.9	51%
CARCASS	RIB	+0.5	58%
	RUMP	+0.2	57%
	RBV	+2.3	45%
	IMF	+0.1	56%
PNS	PNS	-	-
	Flight Time	+0.52	65%
\$ INDEX	DOM	+38	
	EXP	+44	

Dam C.I.: 369 days

Morphology: 86%

Wt \_\_\_\_\_

Sc \_\_\_\_\_

\$ \_\_\_\_\_

Notes: A lovely quiet package. Medium framed, deep in the girth with an exceptionally tidy underline. Excellent fertility, muscle and IMF data as you would expect from a Greenup Pascal calf and a dam (J551) with a perfect 8/8 record. Her Dam Gyranda D347 weaned 10/10 and her dam in turn Gyranda A607 weaned 9/9.

GYR21MS370 19/8/2020 (25 mths)

'S' BULL

WACO FREEMAN (P)  
TYNDALE REPLAY 167 (AI) (P)  
BOWENFELS DANELLE 2ND  
**GYRANDA GARFIELD G302 (P)**  
MARSTON MULTI SIRE  
GYRANDA Z131



EIDSVOLD STATION S134 SUPERMAN  
EIDSVOLD STATION W62  
EIDSVOLD STATION T779  
**GYRANDA F751**  
SANTA GERTRUDIS MULTIPLE SIRE  
HARTWOOD 442  
SANTA GERTRUDIS MULTIPLE DAM

Notes: A quiet, polled bull with slick, dark coat. A deep bull with excellent fertility largely derived from the fact that his dam Gyranda F751 has weaned 11 calves in 11 years including a \$10,000 bull sold to Rob and Annie Donoghue in 2019.

Dam C.I.: 362 days Morphology: 89%

Wt \_\_\_\_\_ Sc \_\_\_\_\_

GROWTH	BWT	-	-
	200D	-5	68%
	400D	-8	69%
	600D	+2	71%
	MWT	-25	65%
MILK	MILK	+4	57%
	SS	+0.3	71%
FERTILITY	DTC	-6.7	58%
	EMA	+1.1	55%
CARCASS	RIB	+2.8	62%
	RUMP	+2.8	61%
	RBV	+0	50%
	IMF	+0.5	60%
PNS	PNS	-0.1	-
	Flight Time	-0.14	69%
\$ INDEX	DOM	+3	
	EXP	+12	

\$ \_\_\_\_\_

GYR21MS228 1/9/2020 (25 mths)

'S' BULL

GREENUP GAFFER G74 (P)  
TOOKEY CREEK KOFU K60  
TOOKEY CREEK C68 (P)  
**GLEN LEIGH NUTCRACKER N156 (P)**  
ROSEVALE SCRIBE F56  
GLEN LEIGH JULIA J155  
GLEN LEIGH DEE DEE D193



GYRANDA ALIBI A546  
GYRANDA EDITOR E572  
GYRANDA C653  
**GYRANDA P419 (P)**  
GYRANDA D562 (PS)  
GYRANDA H321 (P)  
GYRANDA C735 (P)

Notes: A lovely quiet homozygous poll bull with good growth and a very tidy sheath. Dam P419 (P) calved at three but has weaned 2/2 since. Her Dam H321 weaned 8/9.

Dam C.I.: 399 days Morphology: 70%

Wt \_\_\_\_\_ Sc \_\_\_\_\_

GROWTH	BWT	-	-
	200D	+11	63%
	400D	+20	64%
	600D	+26	66%
	MWT	+29	59%
MILK	MILK	-1	40%
	SS	+2	67%
FERTILITY	DTC	+0.5	46%
	EMA	+2.1	49%
CARCASS	RIB	+0.3	56%
	RUMP	-0.1	55%
	RBV	+0	43%
	IMF	+0.3	56%
PNS	PNS	-	-
	Flight Time	+0.06	63%
\$ INDEX	DOM	+13	
	EXP	+16	

\$ \_\_\_\_\_



## GYRANDA S418 (P)

GYR21MS418 9/9/2020 (25 mths)

'S' BULL

ROSEVALE EMPIRE E464  
ROSEVALE LACOSTE L252  
ROSEVALE JAG A205 (P)

### GLEN RUFUS PARK OHIO P98

WIGHTFIELDS CRACKERJACK C75 (PS)(AI)  
ROSEVALE ROWENA H297  
ROSEVALE ROWENA D231

TYNDALE NODDY O28 (P)  
ROSEVALE NODDY A18 (P)  
ROSEVALE JADE V219

### GYRANDA L507 (P)

GBL 447  
HARTWOOD B-550  
HARTWOOD 699

Notes: Medium framed, thick bull with a tidy sheath. Dark coat and good data for temperament and fertility. Dam L507 (P) retains a perfect record, weaning six calves in six years.

Dam C.I.: 363 days Morphology: 78%

Wt \_\_\_\_\_ Sc \_\_\_\_\_

GROWTH	BWT	-	-	
	200D	+5	63%	
	400D	+8	65%	
	600D	+8	66%	
MWT	MWT	+19	60%	
	MILK	-2	47%	
	FERTILITY	SS	+0.1	67%
		DTC	-10.1	48%
CARCASE	EMA	+1.4	50%	
	RIB	+2	54%	
	RUMP	+2.2	53%	
	RBV	+0.6	45%	
	IMF	+0.3	56%	
	PNS	+4.5	-	
\$ INDEX	DOM	+20		
	EXP	+29		
Flight Time		+0.19	64%	

\$



## GYRANDA S248 (P)

GYR21MS248 5/9/2020 (25 mths)

'S' BULL

ROSEVALE EMPIRE E464

### ROSEVALE LENNOX L256 (PS)

ROSEVALE SCARLET E247 (P)

TOOKEY CREEK GURU G34 (P)  
GYRANDA LORAX L794 (PP)  
GYRANDA J359

### GYRANDA P271 (P)

ROSEVALE GUMPER X546 (P)  
GYRANDA E237  
GYRANDA Y461

Notes: Extremely well muscled young bull with a good sheath and a clean coat. Dam P271 calved at three and has weaned 2/2. Her Dam Gyranda E237 weaned 7/8.

Dam C.I.: 430 days Morphology: 96%

Wt \_\_\_\_\_ Sc \_\_\_\_\_

GROWTH	BWT	-	-	
	200D	+11	66%	
	400D	+20	67%	
	600D	+33	69%	
MWT	MWT	+51	62%	
	MILK	+1	50%	
	FERTILITY	SS	+1.6	69%
		DTC	-3	55%
CARCASE	EMA	-0.3	54%	
	RIB	-1.6	60%	
	RUMP	-2.2	59%	
	RBV	+0.6	48%	
	IMF	-0.2	60%	
	PNS	+6.3	-	
\$ INDEX	DOM	+16		
	EXP	+28		
Flight Time		+0.11	68%	

\$



## GYRANDA S214 (P)

GYR21MS214 8/9/2020 (25 mths)

'S' BULL



ROSEVALE GALLIPOLI G218 (P)  
ROSEVALE GALLIPOLI K468 (P)  
ROSEVALE BRIDE G451 (P)  
**GREENUP PASCAL P356 (P)**  
DANGARFIELD TYCOON T190 (P)  
GREENUP K117 (P)  
GREENUP Y73

WARRILLEE W/684 (P)  
GYRANDA CESAR C422 (PS)  
GYRANDA A219  
**GYRANDA M625 (P)**  
GYRANDA DYNAMIC D444 (P)  
GYRANDA K623 (P)  
GYRANDA C123

Dam C.I.: 539 days

Morphology: 94%

Wt \_\_\_\_\_

Sc \_\_\_\_\_

\$

GROWTH	BWT	-	-	
	200D	+11	63%	
	400D	+26	64%	
	600D	+27	65%	
MWT	MWT	+39	60%	
	MILK	+2	44%	
	FERTILITY	SS	+1.6	67%
		DTC	-4.8	46%
CARCASE	EMA	+3.7	48%	
	RIB	+1.8	56%	
	RUMP	+2	55%	
	RBV	+0.4	44%	
	IMF	+0.5	55%	
	PNS	-	-	
\$ INDEX	DOM	+26		
	EXP	+30		
Flight Time		+0.18	63%	

Notes: A tremendous carcass bull. Quiet, loose skin, tidy sheath and plenty of growth in a medium frame. EBV data puts his muscle, fats and temperament all in the top 10% of the breed. His fertility data is not too shabby either and 94% morphology should see to plenty of calves on the ground.





# GYRANDA S462 (P)

'S' BULL  
GYR21MS462 16/9/2020 (24 mths)



ROSEVALE NODDY A18 (P)  
GYRANDA FRANKLIN F238 (P)  
GYRANDA C361 (P)  
**GYRANDA MULGA BILL M482 (P)**  
MARSTON MULTI SIRE  
GYRANDA Z131

EIDSVOLD STN ES/D648 DINGO  
GYRANDA GARWOOD G684 (PS)  
GYRANDA E165 (P)  
**GYRANDA L339 (P)**  
CLANRICARD CONARA Z408  
GYRANDA F911  
GYRANDA Y513

GROWTH	BWT	-	-
	200D	+8	67%
	400D	+8	68%
	600D	+19	70%
	MWT	+5	63%
MILK	MILK	-1	48%
	SS	+1.8	70%
FERTILITY	DTC	+0.2	53%
	EMA	+0.9	54%
CARCASS	RIB	+0.5	58%
	RUMP	+0	57%
	RBV	+0.4	48%
	IMF	-0.2	59%
\$ INDEX	PNS	+3.1	-
	Flight Time	+0.18	68%
\$ INDEX	DOM	+8	
	EXP	+12	

Dam C.I.: 363 days

Morphology: 85%

Wt \_\_\_\_\_

Sc \_\_\_\_\_

\$ \_\_\_\_\_

Notes: A dark coated bull with plenty of style and a good sheath. Dam L339 (P) calved at three and has weaned five calves in five years including a \$14,000 bull sold to Arraby in 2020.



# GYRANDA S238 (PP) (AI)

GYR21MS238 18/8/2020 (25 mths)

PUREBRED

RDF 8052 1274224  
KR 800/11 1293846 [800/11]  
KR 307/06 4B 1259421 [307/06]

**KING RANCH 921/15**

Waukarau Gold Mine 6151 99904724  
KR 110N/09 110/09 N6 1280743 [110/09]  
KR 23/001 1229754

STRATHMORE WARDEN W152 (P)  
GYRANDA COSMIC C476  
GYRANDA X499

**GYRANDA P517 (P)**

GYRANDA GAMBLE G680 (P)  
GYRANDA K803 (PS)  
GYRANDA F789 (P)



GROWTH	BWT	-	-
	200D	+18	61%
	400D	+23	60%
	600D	+33	65%
	MWT	+39	55%
MILK	MILK	+1	35%
	SS	+0.7	66%
FERTILITY	DTC	+2.3	43%
	EMA	+2.2	45%
CARCASS	RIB	-0.9	53%
	RUMP	-1.6	52%
	RBV	+0.4	41%
	IMF	+0.2	54%
\$ INDEX	PNS	-	-
	Flight Time	-0.01	62%
\$ INDEX	DOM	+14	
	EXP	+17	

Notes: A lovely soft, King Ranch bull with a good topline and tidy sheath. Homozygous poll and 92% morphology.

Dam C.I.: N/A Morphology: 92%

Wt \_\_\_\_\_ Sc \_\_\_\_\_

\$ \_\_\_\_\_







GROWTH	BWT	-	-
	200D	+16	60%
	400D	+22	61%
	600D	+34	64%
	MWT	+46	55%
MILK	MILK	-3	31%
	SS	+1.3	65%
FERTILITY	DTC	-1.9	42%
	EMA	+2.2	45%
CARCASS	RIB	-0.2	53%
	RUMP	-0.9	52%
	RBV	+0.5	40%
	IMF	+0.3	54%
\$ INDEX	PNS	-	-
	Flight Time	+0.29	62%
\$ INDEX	DOM	+18	
	EXP	+27	

RDF 8052 1274224  
 KR 800/11 1293846 [800/11]  
 KR 307/06 4B 1259421 [307/06]  
**KING RANCH 921/15**  
 WAUKARAU GOLD MINE 6151 99904724  
 KR 110N/09 110/09 N6 1280743 [110/09]  
 KR 23/001 1229754

ROWANLEA DUNTRON D24 (PS)  
 GYRANDA LIGNUM L164 (P)  
 GYRANDA E177  
**GYRANDA P257**  
 RAYTEK DEMOCRAT D46 (P)  
 GYRANDA K147 (P)  
 GYRANDA E209

Dam C.I.: 433 days

Morphology: 89%

Wt \_\_\_\_\_

Sc \_\_\_\_\_

\$ \_\_\_\_\_

Notes: Packing plenty of weight and carcass into a medium frame, this King Ranch son is a tremendous commercial prospect. Combining growth with carcass and a lovely quiet nature. His Dam P257 has weaned 2/2 and her Dam Gyranda K147 weaned 6/7.

GYR21MS464 12/8/2020 (25 mths)

KR 282/08 1273676  
 KR 189/11 1293527 [189/11]  
 KR 363/5 5A 1252806 [363/5]  
**RED DOC DIABLO 6306**  
 KR 189/11 1293527 [189/11]  
 RED DOC 3167 20132957 [3167]  
 O.X MACKENZIE 767 1294444

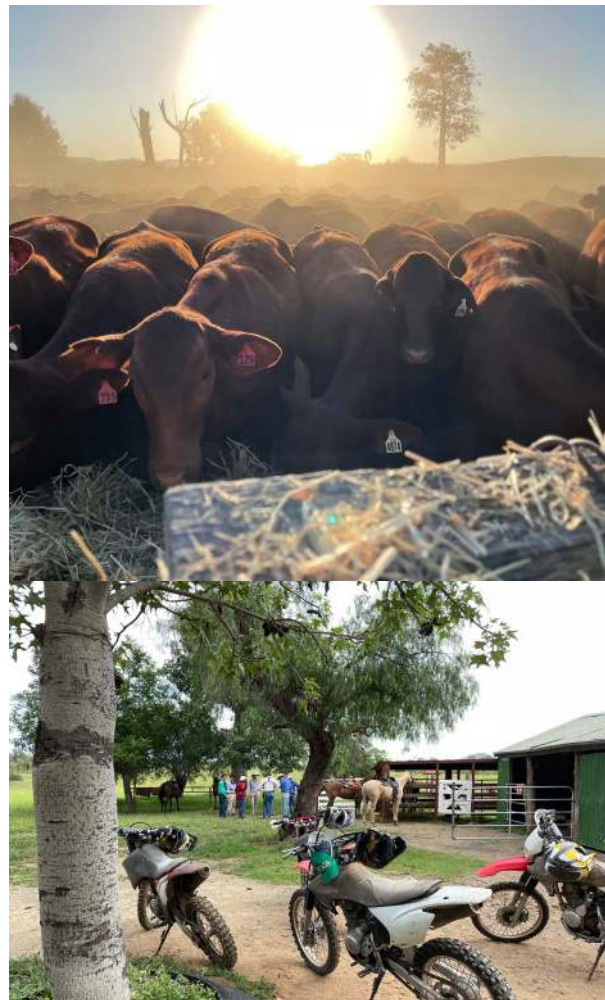
GYRANDA ALIBI A546  
 GYRANDA EDITOR E572  
 GYRANDA C653  
**GYRANDA N465**  
 GYRANDA ARNHAM A110  
 GYRANDA H709  
 GLENAAN R101

Notes: Medium framed, slick coated bull. Slightly lighter in colour. Tremendous muscle throughout - power and performance in a neat package. Dam Gyranda N465 calved as two year old and has weaned 3/4.

Dam C.I.: 555 days Morphology: -

Wt \_\_\_\_\_ Sc \_\_\_\_\_

GROWTH	BWT	-	-
	200D	+20	63%
	400D	+23	64%
	600D	+35	67%
	MWT	+40	58%
MILK	MILK	-2	31%
	SS	-0.7	67%
FERTILITY	DTC	+0.6	45%
	EMA	+1.4	48%
CARCASS	RIB	+1.3	55%
	RUMP	+1.3	54%
	RBV	-1	42%
	IMF	+0.9	56%
\$ INDEX	PNS	-	-
	Flight Time	-0.03	63%
\$ INDEX	DOM	+9	
	EXP	+16	





42

## GYRANDA S380 (P)

PUREBRED

GYR21MS380 5/8/2020 (26 mths)



KR 282/08 1273676  
 KR 189/11 1293527 [189/11]  
 KR 363/5 5A 1252806 [363/5]  
**RED DOC DIABLO 6306**  
 KR 189/11 1293527 [189/11]  
 RED DOC 3167 20132957 [3167]  
 O.X MACKENZIE 767 1294444

RAYTEK DEMOCRAT D46 (P)  
 ROSEVALE DEMOCRAT G268 (P)  
 ROSEVALE HONEY Y165  
**GYRANDA P113**  
 DANGARFIELD PENROSE P194 (P)  
 GYRANDA E195  
 GYRANDA C141

	BWT	-	-
GROWTH	200D	+15	63%
	400D	+16	64%
	600D	+16	65%
	MWT	+24	57%
	MILK	-2	34%
FERTILITY	SS	+0	67%
	DTC	+1.3	44%
CARCASE	EMA	+0.4	47%
	RIB	+0.9	52%
	RUMP	+0.7	51%
	RBY	-0.5	40%
	IMF	+0.2	53%
	PNS	-	-
	Flight Time	+0	65%
\$ INDEX	DOM	+7	
	EXP	+6	

Dam C.I.: N/A

Morphology: 85%

Wt \_\_\_\_\_

Sc \_\_\_\_\_

\$ \_\_\_\_\_

Notes: Another classy Red Doc. calf carrying plenty of carcass and a tidy sheath. Dam P113 calved at three and has weaned 2/2 since. Her Dam E195 weaned 8/9.

43

## GYRANDA S138 (PP)

PUREBRED

GYR21MS138 22/9/2020 (24 mths)



PP

ROSEVALE GALLIPOLI G218 (P)  
 ROSEVALE GALLIPOLI K468 (P)  
 ROSEVALE BRIDE G451 (P)  
**GREENUP PASCAL P356 (P)**  
 DANGARFIELD TYCOON T190 (P)  
 GREENUP K117 (P)  
 GREENUP Y73

**GYRANDA L353 (P)**  
 GYRANDA C634  
 GYRANDA F1029  
 GYRANDA D563

	BWT	+1.5	64%
GROWTH	200D	+17	64%
	400D	+27	64%
	600D	+36	66%
	MWT	+42	57%
	MILK	+2	40%
FERTILITY	SS	+0.2	66%
	DTC	-5.1	45%
CARCASE	EMA	+4.5	47%
	RIB	+2.2	55%
	RUMP	+2.8	54%
	RBY	+0.4	41%
	IMF	+0.4	52%
	PNS	-	-
	Flight Time	+0.16	61%
\$ INDEX	DOM	+27	
	EXP	+35	

Dam C.I.: 464 days

Morphology: -

Wt \_\_\_\_\_

Sc \_\_\_\_\_

\$ \_\_\_\_\_

Notes: A lighter coloured, homozygous poll bull, packing real performance into a medium frame. This bull has an extraordinary set of data. Growth and fertility in the top 20% of the breed combined with muscle and fats in the best 5%. Dam L353 (P) weaned 5/6 to date.



## GYRANDA S416 (PS)

GYR21MS416 9/9/2020 (24 mths)

PUREBRED

WIGHTFIELDS DOWNPOUR G21 (P)  
ROSEVALE KING K88  
ROSEVALE JADE D175

CREE NIAGARA N040 (PS)

CREE F083

EIDSVOLD STATION A166 (PS)  
GYRANDA ENIGMA E124  
GYRANDA B303

GYRANDA L479 (P)

GYRANDA GRIFFIN Z182  
GYRANDA E363  
GYRANDA Y619

Notes: A growthy poll scur bull with sloping rump, quiet disposition and plenty of carcass in a medium frame. A tremendous combination of growth and fertility EBVs and out of a dam (L479) with a perfect calving record of six calves in six years. Her Dam E363 weaned 11/12.

Dam C.I.: 374 days Morphology: 91%

Wt \_\_\_\_\_ Sc \_\_\_\_\_

GROWTH	BWT	-	-
	200D	+18	66%
	400D	+27	67%
GROWTH	600D	+37	69%
	MWT	+67	63%
	MILK	+2	47%
FERTILITY	SS	+0.3	69%
	DTC	-3.9	51%
CARCASS	EMA	+1.3	53%
	RIB	-1.8	60%
	RUMP	-2.4	59%
	RBV	+1.2	47%
	IMF	-0.3	58%
PNS	PNS	-0.5	-
	Flight Time	+0.14	66%
\$ INDEX	DOM	+24	
	EXP	+35	

\$



## GYRANDA X3X5251 (P)

GYR21MX3X5251 15/10/2020 (23 mths)

PUREBRED

CELAMBA ZACK

FISHINGTON JEOGLA J031 (PP)

FISHINGTON CORA E046 (P)

SANTA GERTRUDIS MULTIPLE SIRE

GYRANDA X3X2785

Notes: A stylish commercial bull carrying plenty of punch and a tidy sheath. His EBV data rank this bull in the top 5% of the breed for growth and fat data. His Dam (2785) is a commercial 3X cow with a 3/3 weaning record.

Dam C.I.: 359 days Morphology: 90%

Wt \_\_\_\_\_ Sc \_\_\_\_\_

GROWTH	BWT	-	-
	200D	+18	61%
	400D	+25	61%
GROWTH	600D	+43	63%
	MWT	+55	55%
	MILK	-1	42%
FERTILITY	SS	+0.8	65%
	DTC	-1.3	45%
CARCASS	EMA	+3	46%
	RIB	+2.2	53%
	RUMP	+2.3	52%
	RBV	+0.6	41%
	IMF	+0.1	54%
PNS	PNS	-	-
	Flight Time	-0.16	63%
\$ INDEX	DOM	+22	
	EXP	+33	

\$



## GYRANDA X3X5290 (P)

GYR21MX3X5290 15/9/2020 (24 mths)

PUREBRED

ROSEVALE FRONTIER F584 (P)

ROSEVALE KINSMAN K162 (P)

ROSEVALE CEPRANO W553

TYNDALE REPLAY 167 (AI) (P)  
GYRANDA GARFIELD G302 (P)  
GYRANDA Z131

GYRANDA M359 (COM)

EIDSVOLD STATION X512  
GYRANDA A497  
GYRANDA X473

Notes: A lighter coloured commercial bull with genuine style. Clean coat and a good sheath. Excellent fat data.

Dam C.I.: 553 days Morphology: 70%

Wt \_\_\_\_\_ Sc \_\_\_\_\_

GROWTH	BWT	-	-
	200D	+10	63%
	400D	+12	65%
GROWTH	600D	+29	66%
	MWT	+27	60%
	MILK	-1	43%
FERTILITY	SS	+1.5	68%
	DTC	-3	49%
CARCASS	EMA	+2.4	49%
	RIB	+2.5	57%
	RUMP	+2.8	56%
	RBV	-0.3	45%
	IMF	+0.3	56%
PNS	PNS	-3.9	-
	Flight Time	-0.07	65%
\$ INDEX	DOM	+11	
	EXP	+24	

\$



## GYRANDA S388 (PP)

GYR21MS388 2/9/2020 (25 mths)

PUREBRED

ROSEVALE DEMOCRAT G268 (P)  
GYRANDA KENNY K592 (P)  
GYRANDA F445 (P)

BIARA NORTHAMPTON 7089(PS)

ROSEVALE BANDANNA F216  
BIARA 2046

ROSEVALE NODDY A18 (P)  
GYRANDA FRANKLIN F238 (P)  
GYRANDA C361 (P)

GYRANDA P367 (PP)

STRATHMORE WARDEN W152 (P)  
GYRANDA C349 (P)  
GYRANDA BRIDGET

Notes: A slick coated sire with muscle to burn and a tidy sheath. Homozygous polled, this bull excels at carcass while retaining plenty of growth. His Dam P367 (PP) retains a perfect weaning record of 2/2 since calving at three.

Dam C.I.: 421 days Morphology: 61%

Wt \_\_\_\_\_ Sc \_\_\_\_\_

GROWTH	BWT	-	-
	200D	+14	65%
	400D	+22	66%
GROWTH	600D	+25	68%
	MWT	+30	60%
	MILK	-3	46%
FERTILITY	SS	+1.9	68%
	DTC	+1.6	50%
CARCASS	EMA	+4.5	
	RIB	+0.5	58%
	RUMP	+0.2	57%
	RBV	+1.3	45%
	IMF	-0.4	58%
PNS	PNS	-	-
	Flight Time	+0.07	66%
\$ INDEX	DOM	+23	
	EXP	+20	

\$





# GYRANDA S544

GYR21MS544 6/11/2020 (23 mths)

PUREBRED

ROSEVALE EMPIRE E464

ROSEVALE LENNOX L256 (PS)

ROSEVALE SCARLET E247 (P)

ROSEVALE BATTALLION E622 (P)  
ROWANLEA KLUGER K32 (P)  
ROWANLEA E31 (P)

**GYRANDA N309 (P)**

GYRANDA FOLSOM Y186  
GYRANDA F399  
GLENAAN R089

Notes: A soft bull with a slick coat and exceptional fertility data. Dam N309 has weaned 3/4.

Dam C.I.: 565 days Morphology: 86%

Wt \_\_\_\_\_ Sc \_\_\_\_\_

GROWTH	BWT	-	-	
	200D	+18	66%	
	400D	+29	67%	
	600D	+35	69%	
MWT	MWT	+66	62%	
	MILK	+0	50%	
	FERTILITY	SS	+3.1	69%
		DTC	-11.9	56%
CARCASE	EMA	+0.1	53%	
	RIB	+0.2	60%	
	RUMP	-0.2	59%	
	RBY	-0.3	48%	
	IMF	+0.9	60%	
	PNS	+3.9	-	
\$ INDEX	DOM	+26		
	EXP	+44		

\$



# GYRANDA X3X5269 (P)

GYR21MX3X5269 3/10/2020 (24 mths)

PUREBRED

ROSEVALE BATTALION B150 (P)  
ROSEVALE BATTALION F446 (P)  
ROSEVALE BALSAMIC B209 (P)

**GYRANDA MEDICINE MAN M236(P)**

GYRANDA C834  
GYRANDA F349 (P)  
GYRANDA A189 (P)

CYNCOED X-HAUST (P)  
CYNCOED KARL BENZ B340 (PS)  
ROBENLEA XANTHIPPE

**GYRANDA G737 (COM)**

GYRANDA FLYNN Y226  
GYRANDA D707 (P)  
GYRANDA Z279 (P)

Notes: A lovely presentable package, yielding all you want for growth, fertility and temperament. Out of a commercial cow that will calve out for the tenth time in September.

Dam C.I.: 364 days Morphology: 85%

Wt \_\_\_\_\_ Sc \_\_\_\_\_

GROWTH	BWT	-	-	
	200D	+15	63%	
	400D	+22	65%	
	600D	+27	63%	
MWT	MWT	+47	58%	
	MILK	-2	45%	
	FERTILITY	SS	+1.1	67%
		DTC	-2.7	50%
CARCASE	EMA	+1.4	49%	
	RIB	+0.7	53%	
	RUMP	+0.2	52%	
	RBY	+0.7	42%	
	IMF	-	-	
	PNS	-2.1	-	
\$ INDEX	DOM	+21		
	EXP	+26		

\$



# GYRANDA S254 (P)

PUREBRED  
GYR21MS254 14/9/2020 (24 mths)



ROSEVALE NODDY A18 (P)  
GYRANDA FRANKLIN F238 (P)  
GYRANDA C361 (P)  
**GYRANDA MULGA BILL M482 (P)**  
MARSTON MULTI SIRE  
GYRANDA Z131

EIDSVOLD STATION ZORO Z188 (PS)  
EIDSVOLD STATION FLETCH F24  
GYRANDA ESA395  
**GYRANDA K617**  
GYRANDA C224  
GYRANDA F579  
GYRANDA A293

GROWTH	BWT	-	-	
	200D	+15	66%	
	400D	+26	67%	
	600D	+42	68%	
MWT	MWT	+61	62%	
	MILK	+1	48%	
	FERTILITY	SS	+1	70%
		DTC	+2.6	51%
CARCASE	EMA	+2	51%	
	RIB	-0.5	58%	
	RUMP	-0.8	57%	
	RBY	+0.5	46%	
	IMF	-0.2	57%	
	PNS	+2.2	-	
\$ INDEX	DOM	+16		
	EXP	+24		

Dam C.I.: 376 days

Morphology: 78%

Wt \_\_\_\_\_

Sc \_\_\_\_\_

\$

Notes: For those seeking the traditional Santa type with plenty of frame, clean coat and a lovely loose skin this bull is well worth a look. One of the heaviest bulls in the sale and carrying the data to back it up, this quiet, poll sire will make a good impression on any herd of cows. Dam K617 calved at three but has weaned 6/6 since. Her Dam F579 also calved at three and then weaned 9/9.



# GYRANDA S304

'S' BULL

GYR21MS304 21/8/2020 (25 mths)



GROWTH	BWT	-	-
	200D	+15	62%
	400D	+27	61%
	600D	+39	63%
	MWT	+44	57%
MILK	MILK	+1	45%
	SS	+1.1	55%
FERTILITY	DTC	+0.3	49%
	EMA	+3.8	49%
CARCASE	RIB	-0.2	53%
	RUMP	-0.6	52%
	RBV	+1.4	42%
	IMF	-0.6	53%
PNS	PNS	-	-
	Flight Time	+0.13	65%
\$ INDEX	DOM	+25	
	EXP	+30	

ROSEVALE DEMOCRAT G268 (P)  
 GYRANDA KENNY K592 (PS)  
 GYRANDA F445 (P)  
**BIARA NORTHAMPTON 7089(PS)**  
 ROSEVALE BANDANNA F216  
 BIARA 2046

CREE MULTI SIRE  
 CREE KOMATSU K144 (PP)  
 CREE H107 (P)  
**GYRANDA PLATINUM P521 (P)**  
 DANGARFIELD PENROSE P194 (P)  
 GYRANDA J631  
 GYRANDA D213

Dam C.I.: 411 days

Morphology: 75%

Wt \_\_\_\_\_

Sc \_\_\_\_\_

\$ \_\_\_\_\_

Notes: A lovely big framed bull with excellent topline and thickness throughout. Good sheath and muscle throughout. Dam Gyranda Platinum P521(P) calved at three and has weaned 2/2 since. Her Dam Gyranda J631 weaned 7/8 so far.



# GYRANDA S480

GYR21MS480 30/9/2020 (24 mths)

'S' BULL

ROSEVALE DEMOCRAT G268 (P)  
 GYRANDA KENNY K592 (PS)  
 GYRANDA F445 (P)  
**BIARA NORTHAMPTON 7089(PS)**  
 ROSEVALE BANDANNA F216  
 BIARA 2046

CELAMBA ZACK  
 FISHINGTON JEGLA J031 (PP)  
 FISHINGTON CORA E046 (P)  
**GYRANDA N675 (P)**  
 CUMBERLAND WARRIOR W220  
 GYRANDA C995  
 SANTA GERTRUDIS MULTIPLE DAM

Notes: An eye catching bull with length and carcass. Medium framed, clean coated and loose skinned. EBV data at the top of the breed for growth and muscle. Dam Gyranda N675 calved at two and has weaned 3/4. Her Dam C995 weaned nine calves in nine years.

Dam C.I.: 548 days Morphology: 70%

Wt \_\_\_\_\_ Sc \_\_\_\_\_

GROWTH	BWT	-	-
	200D	+23	62%
	400D	+34	64%
	600D	+43	63%
	MWT	+65	57%
MILK	MILK	+1	45%
	SS	+1.8	66%
FERTILITY	DTC	+2.4	49%
	EMA	+3	49%
CARCASE	RIB	-1	57%
	RUMP	-1.8	56%
	RBV	+1.2	44%
	IMF	-0.5	56%
PNS	PNS	-	-
	Flight Time	-0.04	66%
\$ INDEX	DOM	+25	
	EXP	+28	

\$ \_\_\_\_\_



# GYRANDA S368

GYR21MS368 23/9/2020 (24 mths)

'S' BULL

ROSEVALE BATTALLION E622 (P)  
**ROWANLEA KLUGER K32 (P)**  
 ROWANLEA E31 (P)

GYRANDA ALIBI A546  
 GYRANDA EDITOR E572  
 GYRANDA C653  
**GYRANDA N387 (P)**  
 GYRANDA ALCATRAZ A140 (P)  
 GYRANDA F1053  
 GYRANDA C625 (P)

Notes: A lovely dark bull with a tidy sheath and clean coat. A great set of EBV data across the board with the perfect combination of growth, fertility and carcass. His Dam N387 (P) retains a perfect record weaning 4/4 so far.

Dam C.I.: 364 days Morphology: 86%

Wt \_\_\_\_\_ Sc \_\_\_\_\_

GROWTH	BWT	-	-
	200D	+14	67%
	400D	+23	68%
	600D	+31	69%
	MWT	+43	62%
MILK	MILK	-3	53%
	SS	+2.2	70%
FERTILITY	DTC	-10	57%
	EMA	+2.8	54%
CARCASE	RIB	+1.5	61%
	RUMP	+1.4	60%
	RBV	+0.2	49%
	IMF	+0.5	60%
PNS	PNS	+4	-
	Flight Time	+0.14	67%
\$ INDEX	DOM	+27	
	EXP	+41	

\$ \_\_\_\_\_





ROSEVALE BATTALLION E622 (P)

**ROWANLEA KLUGER K32 (P)**

ROWANLEA E31 (P)

EIDSVOLD STATION ESX476  
GYRANDA BOMBER B276  
GYRANDA V199**GYRANDA G391**SANTA GERTRUDIS MULTIPLE SIRE  
GYRANDA X481

	BWT	-	-
GROWTH	200D	+6	68%
	400D	+15	69%
	600D	+24	70%
	MWT	+40	64%
	MILK	-2	54%
FERTILITY	SS	+1.5	71%
	DTC	-13.1	57%
CARCASE	EMA	+2.5	55%
	RIB	+0.7	61%
	RUMP	+0	60%
	RBY	+0.7	49%
	IMF	+0.8	59%
	PNS	+2.8	-
	Flight Time	-0.03	68%
\$ INDEX	DOM	+26	
	EXP	+44	

Dam C.I.: 417 days

Morphology: 58%

Wt \_\_\_\_\_

Sc \_\_\_\_\_

\$ \_\_\_\_\_

Notes: A powerful package in a medium frame. Quiet, tidy sheath, slick coat and well defined hindquarter. Exceptional fertility data in a bull whose Dam G391 weaned 8/9. Her Dam X481 weaned eleven in eleven years.



ROSEVALE DEMOCRAT G268 (P)

GYRANDA KENNY K592 (PS)

GYRANDA F445 (P)

**BIARA NORTHAMPTON 7089(PS)**

ROSEVALE BANDANNA F216

BIARA 2046

**GYRANDA L553 (P)**

EIDSVOLD STATION V132

GYRANDA C931

SANTA GERTRUDIS MULTIPLE DAM

	BWT	-	-
GROWTH	200D	+9	66%
	400D	+22	67%
	600D	+20	68%
	MWT	+28	62%
	MILK	+2	48%
FERTILITY	SS	+3.2	69%
	DTC	-8.1	51%
CARCASE	EMA	+2.6	52%
	RIB	+0.1	59%
	RUMP	-0.5	58%
	RBY	+0.8	46%
	IMF	-0.1	57%
	PNS	-	-
	Flight Time	+0.25	66%
\$ INDEX	DOM	+27	
	EXP	+32	

Dam C.I.: 452 days

Morphology: 90%

Wt \_\_\_\_\_

Sc \_\_\_\_\_

\$ \_\_\_\_\_

Notes: A lovely heavy bull with great thickness across the shoulders and excellent fertility data. Dam Gyranda L553 (P) has weaned 5/6, while her Dam Gyranda C931 weaned 13 calves in 13 years.



## GYRANDA S626 (P)

GYR21MS626 20/9/2020 (24 mths)

'S' BULL

ROSEVALE DEMOCRAT G268 (P)  
GYRANDA KENNY K592 (PS)  
GYRANDA F445 (P)

### BIARA NORTHAMPTON 7089(PS)

ROSEVALE BANDANNA F216  
BIARA 2046

TYNDALE REPLAY 167 (AI) (P)  
GYRANDA HUMMER H274 (P)  
GYRANDA D363 (P)

### GYRANDA P643(P)

GYRANDA C160  
GYRANDA F543  
GYRANDA B509

Notes: An exceptionally well muscled bull with an expansive hindquarter and clean coat. Tremendous EBV data for growth and EMA without sacrificing any fertility. Dam P643 (P) calved at three and has weaned 2/2 since. Her Dam Gyranda F543 weaned 9/10.

Dam C.I.: 429 days Morphology: 67%

Wt \_\_\_\_\_ Sc \_\_\_\_\_

GROWTH	BWT	-	-
	200D	+17	62%
400D	+29	63%	
600D	+41	63%	
MWT	+48	58%	
MILK	+1	45%	
FERTILITY	SS	+1.9	56%
	DTC	-2.2	49%
EMA	+5	49%	
CARCASE	RIB	+0	56%
	RUMP	-0.9	55%
	RBV	+2.2	44%
	IMF	-0.5	56%
PNS	-	-	
Flight Time	-0.03	66%	
\$ INDEX	DOM	+34	
	EXP	+39	

\$



## GYRANDA S132 (P)

GYR21MS132 14/9/2020 (24 mths)

'S' BULL

WARENDA D696 (P)  
GYRANDA LONGSHOT L110(P)(AI)  
GYRANDA H663

### GYRANDA PAYMASTER P156 (P)

GYRANDA EDITOR E572  
GYRANDA M513  
GYRANDA F1049 (P)

ROSEVALE BATTALLION E622 (P)  
ROWANLEA KLUGER K32 (P)  
ROWANLEA E31 (P)

### GYRANDA Q507

CLANRICARD CONARA Z408  
GYRANDA F911  
GYRANDA Y513

Notes: A heavy, stylish bull with tidy underline, smooth coat and excellent days to calving data. This bull is a Paymaster calf out of a maiden heifer but he was a hefty 43kg when born. Dam Q507 missed her rebreed but will calve out again later this year. Her Dam F911 weaned 9/10.

Dam C.I.: N/A Morphology: 88%

Wt \_\_\_\_\_ Sc \_\_\_\_\_

GROWTH	BWT	+2.4	74%
	200D	+16	67%
400D	+22	66%	
600D	+36	68%	
MWT	+38	60%	
MILK	-1	43%	
FERTILITY	SS	+2.2	68%
	DTC	-8.1	49%
EMA	+1.5	51%	
CARCASE	RIB	+0	58%
	RUMP	-0.8	58%
	RBV	+0.6	46%
	IMF	+0.1	58%
PNS	-	-	
Flight Time	+0.05	65%	
\$ INDEX	DOM	+24	
	EXP	+39	

\$



## GYRANDA S122 (P)

GYR21MS122 2/9/2020 (25 mths)

'S' BULL

WARENDA D696 (P)  
GYRANDA LONGSHOT L110(P)(AI)  
GYRANDA H663

### GYRANDA PAYMASTER P156 (P)

GYRANDA EDITOR E572  
GYRANDA M513  
GYRANDA F1049 (P)

ROWANLEA DUNTRON D24 (PS)  
GYRANDA LIGNUM L164 (P)  
GYRANDA E177

### GYRANDA Q541

GYRANDA CESAR C422 (PS)  
GYRANDA G165  
GYRANDA X383

Notes: A verified low birthweight & high growth young sire. Lighter in the coat carrying great muscle throughout. This is the type of next generation sire that Gyranda is able to produce via years of collecting data. A 33kg calf from a maiden heifer he carries both birthweight & 600 day growth data in the top 5% of the breed, alongside exceptional fertility, muscle & temperament data. Dam Gyranda Q541 calved at two & maintains a perfect record of 2/2 & pregnant again. Her Dam G165 also calved at two & has weaned 9/10 so far.

Dam C.I.: 398 days Morphology: -

Wt \_\_\_\_\_ Sc \_\_\_\_\_

GROWTH	BWT	-0.5	74%
	200D	+17	66%
400D	+32	66%	
600D	+46	64%	
MWT	+58	59%	
MILK	+3	43%	
FERTILITY	SS	+2.6	68%
	DTC	-5.4	49%
EMA	+3.5	51%	
CARCASE	RIB	-0.2	56%
	RUMP	-1	55%
	RBV	+1.3	44%
	IMF	-0.3	55%
PNS	-	-	
Flight Time	+0.26	66%	
\$ INDEX	DOM	+32	
	EXP	+44	

\$



## GYRANDA S244

GYR21MS244 25/8/2020 (25 mths)

'S' BULL

ROSEVALE EMPIRE E464  
ROSEVALE LACOSTE L252  
ROSEVALE JAG A205 (P)

### GLEN RUFUS PARK OHIO P98

WIGHTFIELDS CRACKERJACK C75 (PS)(AI)  
ROSEVALE ROWENA H297  
ROSEVALE ROWENA D231

WACO FREEMAN (P)  
TYNDALE REPLAY 167 (AI) (P)  
BOWENFELS DANELLE 2ND

### GYRANDA K537

WACO FREEMAN D551 (P)  
IBROX FARMS A14  
KELLY WALLAH TINKERBEL

Notes: A well muscled bull with a lighter coat. Dam K537 calved at two and has weaned five from six, including a \$5000 bull sold to Bev Conway and a \$9000 bull sold to Scott Bridle in 2020.

Dam C.I.: 423 days Morphology: 84%

Wt \_\_\_\_\_ Sc \_\_\_\_\_

GROWTH	BWT	-	-
	200D	+8	64%
400D	+11	65%	
600D	+20	67%	
MWT	+28	61%	
MILK	+3	50%	
FERTILITY	SS	+0.9	69%
	DTC	-4.6	50%
EMA	+2.1	51%	
CARCASE	RIB	+1.3	58%
	RUMP	+1	57%
	RBV	+1.1	47%
	IMF	+0	58%
PNS	+3.4	-	
Flight Time	+0.01	65%	
\$ INDEX	DOM	+18	
	EXP	+26	

\$





## GYRANDA S394

GYR21MS394 9/9/2020 (25 mths)

'S' BULL

ROSEVALE BATTALION E622 (P)

### ROWANLEA KLUGER K32 (P)

ROWANLEA E31 (P)

GYRANDA COLUMBUS V290  
GYRANDA C834  
MARSTON IP471 (P)

### GYRANDA G195

GYRANDA CRACKERJACK V532  
GYRANDA C153  
GYRANDA Z411

Notes: A good square bull. Muscle throughout with a dark coat and tidy sheath. This Kluga calf carries some of the best fertility data in the sale with scrotal and DTC data in the top 1% of the breed and 81% morphology. His Dam Gyranda G195 has weaned nine calves in ten years, including a \$22,000 bull sold last year to the Knudsens.

Dam C.I.: 413 days Morphology: 81%

Wt \_\_\_\_\_ Sc \_\_\_\_\_

GROWTH	BWT	-	-
	200D	+6	68%
	400D	+15	69%
	600D	+25	71%
	MWT	+55	64%
	MILK	-2	55%
FERTILITY	SS	+3	71%
	DTC	-12.5	58%
CARCASE	EMA	+0.7	55%
	RIB	-0.3	62%
	RUMP	-1.4	61%
	RBY	+1.2	50%
	IMF	+0.2	60%
	PNS	+3.7	-
\$ INDEX	DOM	+26	
	EXP	+46	

\$



## GYRANDA S712 (P)

GYR21MS712 5/12/2020 (22 mths)

'S' BULL

ROSEVALE MATLOCK W20  
DANGARFIELD PENROSE P194 (P)  
DANGARFIELD 7064

### GYRANDA MOBY DICK M224 (P)

ROSEVALE GUMPER X546 (P)  
GYRANDA F249 (P)  
GYRANDA V285

EIDSVOLD STATION A166 (PS)  
GYRANDA FOR REAL F136 (PS)  
GYRANDA CALAMITY C113

### GYRANDA K635

GYRANDA FAWKES Y146  
GYRANDA F299  
GYRANDA X459

Notes: A medium framed bull with plenty of growth, a clean coat and loose skin. Excellent growth and carcass data. His Dam K635 calved at two and has weaned six calves in seven years.

Dam C.I.: 450 days Morphology: 84%

Wt \_\_\_\_\_ Sc \_\_\_\_\_

GROWTH	BWT	-	-
	200D	+21	63%
	400D	+27	67%
	600D	+37	65%
	MWT	+45	61%
	MILK	-3	49%
FERTILITY	SS	+0.3	59%
	DTC	+6	54%
CARCASE	EMA	+3.2	52%
	RIB	+1.7	60%
	RUMP	+2.2	59%
	RBY	+0.3	47%
	IMF	-0.2	59%
	PNS	+3.8	-
\$ INDEX	DOM	+16	
	EXP	+15	

\$



## GYRANDA S430 (P)

GYR21MS430 2/9/2020 (25 mths)

'S' BULL

ROSEVALE NODDY A18 (P)  
GYRANDA HOMER H344 (P)  
GYRANDA FANTASIA Y579

### GYRANDA MANCHESTER M516 (P)

EIDSVOLD STATION W650  
GYRANDA B851

EIDSVOLD STN ES/V162  
EIDSVOLD STN DANCER D164 (PS)  
EIDSVOLD STN ES/X141

### GYRANDA H527

GYRANDA X126  
GYRANDA F473  
MARSTON D424

Notes: An impressive big bull with lovely lines. Maintaining a 97% morphology score, fertility in the top 20% of the breed and some extraordinary fat data. This stylish bull will go a long way towards balancing up a herd of cows that may be looking for that bit more finish. His Dam H527 has weaned 8/9.

Dam C.I.: 421 days Morphology: 97%

Wt \_\_\_\_\_ Sc \_\_\_\_\_

GROWTH	BWT	-	-
	200D	+9	67%
	400D	+15	68%
	600D	+17	69%
	MWT	+20	63%
	MILK	-1	48%
FERTILITY	SS	+1.3	69%
	DTC	-4.9	51%
CARCASE	EMA	+0.9	52%
	RIB	+1.3	59%
	RUMP	+1.1	58%
	RBY	-0.1	46%
	IMF	+0.6	57%
	PNS	+3.7	-
\$ INDEX	DOM	+15	
	EXP	+20	

\$





GROWTH	BWt	+0.9	74%
	200D	+14	65%
	400D	+20	63%
	600D	+34	66%
	MWT	+31	57%
MILK	MILK	+1	43%
	SS	+1.2	65%
FERTILITY	DTC	-1.7	46%
	EMA	+3.4	48%
CARCASE	RIB	+0.3	55%
	RUMP	-0.2	54%
	RBY	+1.1	43%
	IMF	-0.3	55%
\$ INDEX	PNS	-	-
	Flight Time	+0.01	63%
	DOM	+21	
EXP	+28		



WARENDA D696 (P)  
GYRANDA LONGSHOT L110(P)(AI)  
GYRANDA H663  
**GYRANDA PHOENIX P154 (PS)**  
GYRANDA FOR REAL F136 (PS)  
GYRANDA MIRAGE M375 (P)  
GYRANDA F1053

TOOKEY CREEK GURU G34 (P)  
GYRANDA LORAX L794 (PP)  
GYRANDA J359  
**GYRANDA Q153 (P)**  
GYRANDA FLYNN Y226  
GYRANDA E569  
GYRANDA A127

Dam C.I.: N/A

Morphology: 53%

Wt \_\_\_\_\_

Sc \_\_\_\_\_

\$ \_\_\_\_\_

Notes: A lovely slick coated poll bull with a tidy sheath. Low birthweight, good growth and great carcase with a standout hindquarter.

GYR21MS706 25/10/2020 (23 mths)

**'S' BULL**



ROSEVALE BATTALLION E622 (P)

**ROWANLEA KLUGER K32 (P)**

ROWANLEA E31 (P)

EIDSVOLD STATION Z342 (P)  
GYRANDA EGON E232 (PS)  
GYRANDA Z663  
**GYRANDA J125 (P)**  
GYRANDA CRACKERJACK V532  
GYRANDA C167  
GYRANDA Z423

GROWTH	BWT	-	-
	200D	+9	67%
	400D	+17	67%
	600D	+24	70%
	MWT	+45	63%
MILK	MILK	-2	54%
	SS	+2.1	70%
FERTILITY	DTC	-6.9	57%
	EMA	+1.5	55%
CARCASE	RIB	-0.2	60%
	RUMP	-1.2	60%
	RBY	+1.3	50%
	IMF	+0	60%
\$ INDEX	PNS	+5.2	-
	Flight Time	+0.25	68%
	DOM	+24	
EXP	+35		

Notes: Clean coated poll bull with genuine eye appeal. A tidy sheath, deep in the flank and good topline. A Kluger calf so growth and a quiet disposition are a given on this impressive Homozygous poll sire. Dam J125 (P) has weaned seven calves in eight years, including a \$13,000 bull sold to David Jenkinson in 2020.

Dam C.I.: 423 days Morphology: 87%

Wt \_\_\_\_\_ Sc \_\_\_\_\_

\$ \_\_\_\_\_







# GYRANDA S296 (P)

GYR21MS296 31/8/2020 (25 mths) **'S' BULL**



RAYTEK DEMOCRAT D46 (P)  
ROSEVALE DEMOCRAT G268 (P)  
ROSEVALE HONEY Y165  
**GYRANDA MONTA M272 (P)**  
GYRANDA CRACKERJACK V532  
GYRANDA D549  
MARSTON G1123 (P)

GYRANDA COMMANCHEE V178  
GYRANDA D176  
GYRANDA ZODIAC 655  
**GYRANDA L715 (PS)**  
SANTA GERTRUDIS MULTIPLE SIRE  
GYRANDA X485

GROWTH	BWT	-	-
	200D	+15	68%
	400D	+16	69%
	600D	+27	70%
	MWT	+44	64%
MILK	MILK	+2	52%
	SS	+1.4	70%
FERTILITY	DTC	-11.3	56%
	EMA	+3.2	55%
CARCASS	RIB	+1.2	61%
	RUMP	+1	60%
	RBY	+0.5	49%
	IMF	+0.7	60%
PNS	PNS	+0.9	-
	Flight Time	-0.02	69%
\$ INDEX	DOM	+23	
	EXP	+41	

Dam C.I.: 361 days

Morphology: 95%

Wt \_\_\_\_\_

Sc \_\_\_\_\_

\$ \_\_\_\_\_

Notes: A long bull with a lovely sleek coat, loose skin & good temperament. Tremendous carcass & fertility data with morphology at 95%. Both Days to Calving & IMF data are in the top 5% of the breed with muscle & feta data not far behind. Dam L715 (PS) retains a perfect calving record with 5/5 to date including her last bull calf Gyranda Rafiki R136, bought by Garth Christianson last year for \$26,000. Her Dam Gyranda X485 weaned 13/13.



# GYRANDA S290 (PP)

GYR21MS290 30/8/2020 (25 mths)

**'S' BULL**

CREE MULTI SIRE  
CREE KOMATSU K144 (PP)  
CREE H107 (P)  
**GYRANDA PLATO P368 (PP)**  
GYRANDA ALFIE A280 (P)  
GYRANDA F259 (P)  
GYRANDA B709  
  
GYRANDA COLUMBUS V290  
GYRANDA C834  
MARSTON IP471 (P)  
**GYRANDA G171 (P)**  
SANTA GERTRUDIS MULTIPLE SIRE  
GYRANDA V435



GROWTH	BWT	-	-
	200D	+11	65%
	400D	+17	67%
	600D	+32	68%
	MWT	+24	62%
MILK	MILK	+7	49%
	SS	+0.9	69%
FERTILITY	DTC	-2.4	52%
	EMA	+2.4	52%
CARCASS	RIB	-1	60%
	RUMP	-1.9	59%
	RBY	+1.4	47%
	IMF	-0.1	58%
PNS	PNS	+5.2	-
	Flight Time	+0	66%
\$ INDEX	DOM	+19	
	EXP	+27	

Notes: A clean coated homozygous poll bull with a tidy sheath and plenty of frame. Dam G171 (P) calved at three and has weaned 8/8. Her Dam V435 weaned 12/12.

Dam C.I.: 361 days Morphology: 77%

Wt \_\_\_\_\_ Sc \_\_\_\_\_

\$ \_\_\_\_\_



# GYRANDA S172

GYR21MS172 21/10/2020 (23 mths)

**'S' BULL**

TYNDALE REPLAY 167 (AI) (P)  
GYRANDA GARFIELD G302 (P)  
GYRANDA Z131  
**GYRANDA KALVIN K582 (P)**  
SANTA GERTRUDIS MULTIPLE SIRE  
GYRANDA C735 (P)  
GYRANDA A523 (P)  
  
WATASANTA FIDDESTICKS 1504(P)  
GYRANDA MUSTAFAR M576 (P)  
GYRANDA J359  
**GYRANDA Q663 (P)**  
YARRABEE BLITZ 58 (P)  
GYRANDA N311 (P)  
GYRANDA K393

Notes: A medium framed horned bull with a slick coat. This bull is somewhat younger than his contemporaries. Out of a maiden heifer but a large 45kg calf so best on cows only. Dam Q663 (P) maintains a perfect 2/2 record. Her Dam N311 weaned 3/3. While her Dam K393 has a perfect 7/7 record and her Dam in turn, Gyranda Y243, weaned 13/13.

Dam C.I.: 382 days Morphology: 87%

Wt \_\_\_\_\_ Sc \_\_\_\_\_

\$ \_\_\_\_\_

GROWTH	BWT	+3.2	74%
	200D	+16	68%
	400D	+22	67%
	600D	+39	69%
	MWT	+34	61%
MILK	MILK	+0	38%
	SS	+2.3	68%
FERTILITY	DTC	+3.2	51%
	EMA	+3	52%
CARCASS	RIB	+1.1	59%
	RUMP	+0.7	58%
	RBY	+0.6	46%
	IMF	+0.1	59%
PNS	PNS	+0.7	-
	Flight Time	+0.12	68%
\$ INDEX	DOM	+16	
	EXP	+21	



# NORMANBY 123

NOR21M123 14/11/2020 (22 mths)

'S' BULL

## STRATHMORE MASTER M326 (AI)

CANOWINDRA CENTURION (P)  
GYRANDA DYNAMIC D444 (P)  
GYRANDA 82V

### GYRANDA L373

THE LAKES J1  
GYRANDA C315  
GYRANDA Y161

Notes: A slick coated, medium framed Normanby bull. Excellent carcass characteristics with good muscle definition. A younger bull and well worth checking out.

Dam C.I.: N/A Morphology: 71%

Wt \_\_\_\_\_ Sc \_\_\_\_\_

GROWTH	BWT	-	-
	200D	+12	59%
	400D	+20	61%
	600D	+24	59%
	MWT	+36	55%
	MILK	-2	45%
FERTILITY	SS	-	-
	DTC	+7.4	47%
CARCASS	EMA	+3.1	47%
	RIB	+0.7	54%
	RUMP	+0.6	54%
	RBV	+0.1	43%
	IMF	+0.1	52%
	PNS	+1.5	-
\$ INDEX	DOM	+9	
	EXP	+4	
Flight Time		+0.09	52%

\$



# GYRANDA S618 (PS)

GYR21MS618 12/12/2020 (21 mths)

'S' BULL

SUJO DASHING 184  
ROWANLEA DUNTRON D24 (PS)  
ROWANLEA XCUSE X105  
**GYRANDA LIGNUM L164 (P)**  
EIDSVOLD STATION B188  
GYRANDA E177  
GYRANDA C167

EIDSVOLD STATION A166 (PS)  
GYRANDA ENIGMA E124  
GYRANDA B303  
**GYRANDA L647 (P)**  
ROSEVALE BRIGADIER B422 (P)  
GYRANDA G349  
GYRANDA V457

Notes: Long and deep. Loose skin and a slick coat. A younger bull with a good combination of growth and fertility. Dam L647 (P) calved at two and has weaned 7/7 including a \$10,000 bull sold to Greg Hutton in 2020. Her Dam Gyranda G349 weaned 7/7 before being found dead and her Dam V457 weaned 11/11.

Dam C.I.: N/A Morphology: 74%

Wt \_\_\_\_\_ Sc \_\_\_\_\_

GROWTH	BWT	-	-
	200D	+11	64%
	400D	+22	67%
	600D	+30	65%
	MWT	+26	61%
	MILK	-1	50%
FERTILITY	SS	+1.4	60%
	DTC	-6.6	55%
CARCASS	EMA	+1.9	53%
	RIB	-0.8	60%
	RUMP	-1.3	59%
	RBV	+1.3	48%
	IMF	-0.4	59%
	PNS	-6.4	-
\$ INDEX	DOM	+27	
	EXP	+36	
Flight Time		+0.39	60%

\$



# GYRANDA S468 (PP)

GYR21MS468 7/10/2020 (23 mths)

'S' BULL

ROSEVALE NODDY A18 (P)  
GYRANDA FRANKLIN F238 (P)  
GYRANDA C361 (P)  
**GYRANDA MULGA BILL M482 (P)**  
MARSTON MULTI SIRE  
GYRANDA Z131



TYNDALE NODDY 028 (P)  
ROSEVALE NODDY A18 (P)  
ROSEVALE JADE V219  
**GYRANDA H297 (P)**  
EIDSVOLD STATION A166 (PS)  
GYRANDA D307  
GYRANDA B289

Notes: Framy, clean coated bull with a lovely temperament. A homozygous poll bull with 82% morphology. Dam H297 has weaned eight calves in eight years, but two of these was a set of twins. Owen Anderson bought one of her bull calves for \$11,000 in 2018 and John Knights bought a bull calf last year for \$11,000. Her Dam D307 weaned 11/11.

Dam C.I.: 434 days Morphology: 82%

Wt \_\_\_\_\_ Sc \_\_\_\_\_

GROWTH	BWT	-	-
	200D	+7	68%
	400D	+13	69%
	600D	+17	71%
	MWT	+39	65%
	MILK	-4	53%
FERTILITY	SS	+1.4	71%
	DTC	+1.9	56%
CARCASS	EMA	+1	55%
	RIB	-0.2	62%
	RUMP	-0.6	61%
	RBV	+0.6	50%
	IMF	-0.1	60%
	PNS	+2.2	-
\$ INDEX	DOM	+10	
	EXP	+12	
Flight Time		+0.29	69%

\$



# GYRANDA S472

GYR21MS472 23/9/2020 (24 mths)

'S' BULL

ROSEVALE BATTALLION E622 (P)  
**ROWANLEA KLUGER K32 (P)**  
ROWANLEA E31 (P)

EIDSVOLD STATION S134 SUPERMAN  
EIDSVOLD STATION W62  
EIDSVOLD STATION T779  
**GYRANDA F193**  
GYRANDA DOWN UNDER W130  
GYRANDA Z189  
GYRANDA 4S

Notes: Medium framed, thick bull with good slick coat & tidy sheath. An amazing combination of growth & fertility data sees him with an Export index in the TOP 1% of the breed. In fact his fertility credentials would be hard to beat. On sale day he will have a scrotal over 40cm & days to calving EBV in the top 5% of the breed. Just as importantly, his Dam Gyranda F193 has weaned eleven calves in eleven years & came in pregnant again this year to calve out for her 12th & last calf in September. Her Dam Z189 weaned 6/6 & her Dam Gyranda 4S weaned 13 calves in 13 years!

Dam C.I.: 363 days Morphology: 76%

Wt \_\_\_\_\_ Sc \_\_\_\_\_

GROWTH	BWT	-	-
	200D	+13	69%
	400D	+23	69%
	600D	+38	71%
	MWT	+61	65%
	MILK	+2	57%
FERTILITY	SS	+1	71%
	DTC	-10.5	59%
CARCASS	EMA	+2	56%
	RIB	-1.2	62%
	RUMP	-1.9	61%
	RBV	+1.1	51%
	IMF	+0.1	60%
	PNS	+6.9	-
\$ INDEX	DOM	+28	
	EXP	+48	
Flight Time		+0.07	70%

\$





# GYRANDA S268

GYR21MS268 23/8/2020 (25 mths) **'S' BULL**



ROSEVALE DEMOCRAT G268 (P)  
GYRANDA KENNY K592 (PS)  
GYRANDA F445 (P)  
**BIARA NORTHAMPTON 7089(PS)**  
ROSEVALE BANDANNA F216  
BIARA 2046

SANTA GERTRUDIS MULTIPLE SIRE

**SANTA GERTRUDIS MULTIPLE DAM**

SANTA GERTRUDIS MULTIPLE SIRE  
SANTA GERTRUDIS MULTIPLE DAM  
SANTA GERTRUDIS MULTIPLE DAM

GROWTH	BWT	-	-
	200D	+12	59%
	400D	+17	61%
	600D	+28	63%
	MWT	+29	54%
MILK	MILK	-1	32%
	SS	+0.1	65%
FERTILITY	DTC	+0.4	39%
	EMA	+4.1	44%
CARCASS	RIB	+0.4	52%
	RUMP	+0	51%
	RBY	+1.5	39%
	IMF	-0.3	52%
PNS	PNS	-	-
	Flight Time	+0	60%
\$ INDEX	DOM	+20	
	EXP	+24	

Dam C.I.: N/A

Morphology: 80%

Wt \_\_\_\_\_

Sc \_\_\_\_\_

\$ \_\_\_\_\_

Notes: Grand muscle and lovely loose skin throughout. Slick coat, tight sheath, easy to handle. He is a son of young sire Biara Northampton 7089, who continues to impress with the muscle expression and type of his calves.



# GYRANDA S434

GYR21MS434 9/9/2020 (25 mths)

**'S' BULL**

WIGHTFIELDS DOWNPOUR G21 (P)  
ROSEVALE KING K88  
ROSEVALE JADE D175  
**CREE NIAGARA N040 (PS)**  
CREE F083

RAYTEK DEMOCRAT D46 (P)  
ROSEVALE DEMOCRAT G268 (P)  
ROSEVALE HONEY Y165  
**GYRANDA K293**  
GYRANDA ALCATRAZ A140 (P)  
GYRANDA F373  
GYRANDA V273

Notes: A big framed bull with muscle from tip to toe. Out of a dam (K293) that has never missed, weaning 7/7 this bull carries fertility data (DTC) in the top 10% of the breed.

Dam C.I.: 356 days Morphology: 73%

Wt \_\_\_\_\_ Sc \_\_\_\_\_

GROWTH	BWT	-	-
	200D	+20	66%
	400D	+29	67%
	600D	+34	69%
	MWT	+62	62%
MILK	MILK	+1	49%
	SS	+1.1	69%
FERTILITY	DTC	-7.9	51%
	EMA	+2.7	51%
CARCASS	RIB	-1.1	59%
	RUMP	-1.8	58%
	RBY	+1.4	46%
	IMF	-0.2	58%
PNS	PNS	-1.6	-
	Flight Time	+0.32	66%
\$ INDEX	DOM	+32	
	EXP	+42	

\$ \_\_\_\_\_





ROSEVALE NODDY A18 (P)  
GYRANDA HOMER H344 (P)  
GYRANDA FANTASIA Y579  
**GYRANDA MANCHESTER M516 (P)**  
EIDSVOLD STATION W650  
GYRANDA B851

SUJO DASHING 184  
ROWANLEA DUNTRON D24 (PS)  
ROWANLEA XCUSE X105  
**GYRANDA H175**  
SANTA GERTRUDIS MULTIPLE SIRE  
GYRANDA ENCHANTED X603  
GYRANDA X-CESS

GROWTH	BWT	-	-
	200D	+6	67%
	400D	+18	67%
	600D	+26	69%
	MWT	+35	63%
MILK	+3	49%	
FERTILITY	SS	+0.3	69%
	DTC	-7.5	51%
CARCASS	EMA	+0.6	51%
	RIB	+0.8	58%
	RUMP	+0.6	57%
	RBV	+0.7	46%
IMF	-0.1	58%	
PNS	+0.8	-	
Flight Time	-0.06	68%	
\$ INDEX	DOM	+21	
	EXP	+33	

Dam C.I.: 369 days

Morphology: 85%

Wt \_\_\_\_\_

Sc \_\_\_\_\_

\$ \_\_\_\_\_

Notes: A lighter coloured bull with a slick coat, excellent hindquarter & spring of rib. A good combination of growth, fertility & fats. His Dam Gyranda H175 is a Rowanlea Duntroon D24 cow that calved at three but has weaned 8/8 since. Her Dam Gyranda Enchanted X60 weaned 9/9. Her Dam Gyranda X-cess weaned 11/11 & her Dam Gyranda I38 (born in 1983) weaned 11/12. These are the types of female lines that really demonstrate what longevity is about.

GYR21MS292 17/8/2020 (25 mths)

**PUREBRED**

KR 282/08 1273676  
KR 189/11 1293527 [189/11]  
KR 363/5 5A 1252806 [363/5]  
**RED DOC DIABLO 6306**  
KR 189/11 1293527 [189/11]  
RED DOC 3167 20132957 [3167]  
O.X MACKENZIE 767 1294444

CREE MULTI SIRE  
CREE KOMATSU K144 (PP)  
CREE H107 (P)  
**GYRANDA P569 (P)**  
ROSEVALE NODDY A18 (P)  
GYRANDA J287  
GYRANDA A737

Notes: Take a look at the width in this bull!  
From shoulder to flank there is a thickness that delivers meat in spades. A Red Doc calf with growth data in the top 1% of the breed. His Dam P569 (P) calved at three but has weaned 2/2. Her Dam J287 has weaned 7/8 and her Dam A737 weaned 7/7.

Dam C.I.: 463 days Morphology: 94%

Wt \_\_\_\_\_ Sc \_\_\_\_\_

GROWTH	BWT	-	-
	200D	+27	63%
	400D	+41	64%
	600D	+57	67%
	MWT	+69	58%
MILK	+0	32%	
FERTILITY	SS	+0.5	67%
	DTC	+9.1	44%
CARCASS	EMA	+3.2	48%
	RIB	-0.4	56%
	RUMP	-1	55%
	RBV	+0.6	42%
IMF	-0.3	56%	
PNS	-	-	
Flight Time	+0.06	64%	
\$ INDEX	DOM	+21	
	EXP	+20	

\$ \_\_\_\_\_

GYR21MS212 18/8/2020 (25 mths)

**PUREBRED**

KR 282/08 1273676  
KR 189/11 1293527 [189/11]  
KR 363/5 5A 1252806 [363/5]  
**RED DOC DIABLO 6306**  
KR 189/11 1293527 [189/11]  
RED DOC 3167 20132957 [3167]  
O.X MACKENZIE 767 1294444

DANGARFIELD PENROSE P194 (P)  
GYRANDA HOUSTON H402 (PS)  
GYRANDA B251  
**GYRANDA P713 (PP)**  
WACO YAN E8  
GYRANDA J617 (P)  
GYRANDA F519

Notes: Thick set bull, great topline in a medium framed carcass. Another Diablo calf displaying plenty of carcass potential. Dam P713 (PP) calved at three, but has weaned two in two years since and is pregnant again.

Dam C.I.: 413 days Morphology: 81%

Wt \_\_\_\_\_ Sc \_\_\_\_\_

GROWTH	BWT	-	-
	200D	+15	60%
	400D	+24	62%
	600D	+27	60%
	MWT	+32	53%
MILK	-	-	
FERTILITY	SS	+0.6	66%
	DTC	-0.6	39%
CARCASS	EMA	-	-
	RIB	-	-
	RUMP	-	-
	RBV	-	-
IMF	-	-	
PNS	-	-	
Flight Time	-0.07	63%	
\$ INDEX	DOM	+17	
	EXP	+18	

\$ \_\_\_\_\_





## GYRANDA S486 (P)

GYR21MS486 7/10/2020 (24 mths)

PUREBRED

ROSEVALE NODDY A18 (P)  
GYRANDA FRANKLIN F238 (P)  
GYRANDA C361 (P)

**GYRANDA MULGA BILL M482 (P)**  
MARSTON MULTI SIRE  
GYRANDA Z131



ROSEVALE BATTALLION E622 (P)  
ROWANLEA KLUGER K32 (P)  
ROWANLEA E31 (P)  
**GYRANDA N361 (P)**  
GYRANDA ALCATRAZ A140 (P)  
GYRANDA G185  
GYRANDA 38V

Notes: Tall, dark and handsome. Great temperament, coupled with a dam who has a perfect calving record at 4/4 so far.

Dam C.I.: 359 days Morphology: 89%

Wt \_\_\_\_\_ Sc \_\_\_\_\_

		BWT	
		—	—
GROWTH	200D	+10	65%
	400D	+14	66%
	600D	+20	68%
	MWT	+32	60%
	MILK	+0	47%
FERTILITY	SS	+1.9	69%
	DTC	-3.6	53%
	EMA	+2.1	52%
CARCASE	RIB	+1	59%
	RUMP	+0.7	58%
	RBY	+0.1	47%
	IMF	+0.2	59%
	PNS	+4.6	—
\$ INDEX	Flight Time	+0.17	67%
	DOM	+13	
EXP	+21		

\$



## GYRANDA S556 (P)

GYR21MS556 24/11/2020 (22 mths)

PUREBRED

ROSEVALE NODDY A18 (P)  
GYRANDA FRANKLIN F238 (P)  
GYRANDA C361 (P)

**GYRANDA MULGA BILL M482 (P)**  
MARSTON MULTI SIRE  
GYRANDA Z131



EIDSVOLD STN ES/D648 DINGO  
GYRANDA GARWOOD G684 (PS)  
GYRANDA E165 (P)  
**GYRANDA N345**  
EIDSVOLD STATION ESX476  
GYRANDA F919  
GYRANDA Z401

Notes: A dark coated poll bull, deep in the flank, loose skin with a good sheath. A much younger bull than many of his colleagues and with an easy doing attitude. Dam N345 has weaned 3/4.

Dam C.I.: 391 days Morphology: 80%

Wt \_\_\_\_\_ Sc \_\_\_\_\_

		BWT	
		—	—
GROWTH	200D	+4	66%
	400D	+11	66%
	600D	+13	68%
	MWT	+13	60%
	MILK	-2	49%
FERTILITY	SS	+2	67%
	DTC	-4.8	53%
	EMA	-0.1	52%
CARCASE	RIB	+0.5	59%
	RUMP	+0	58%
	RBY	-0.6	47%
	IMF	+0.4	58%
	PNS	+5.7	—
\$ INDEX	Flight Time	+0.14	67%
	DOM	+8	
EXP	+15		

\$



## GYRANDA S258 (AI)

PUREBRED  
GYR21MS258 3/8/2020 (26 mths)



KR 282/08 1273676  
KR 189/11 1293527 [189/11]  
KR 363/5 5A 1252806 [363/5]  
**RED DOC DIABLO 6306**  
KR 189/11 1293527 [189/11]  
RED DOC 3167 20132957 [3167]  
O.X MACKENZIE 767 1294444

CREE MULTI SIRE  
CREE KOMATSU K144 (PP)  
CREE H107 (P)  
**GYRANDA P379(P)**  
GYRANDA FAWKES Y146  
GYRANDA COFFEE C671  
GYRANDA FANTASIA Y579

		BWT	
		—	—
GROWTH	200D	+27	64%
	400D	+42	65%
	600D	+53	67%
	MWT	+63	58%
	MILK	+0	32%
FERTILITY	SS	+1.3	68%
	DTC	+4.4	44%
	EMA	+4	48%
CARCASE	RIB	+0.8	56%
	RUMP	+0.5	55%
	RBY	+0.3	42%
	IMF	+0.1	56%
	PNS	—	—
\$ INDEX	Flight Time	+0.09	65%
	DOM	+26	
EXP	+27		

Dam C.I.: 484 days

Morphology: 95%

Wt \_\_\_\_\_

Sc \_\_\_\_\_

\$

Notes: Another Red Doc calf. Exceptionally thick, medium framed and with growth in spades. Clean coat, lighter coloured and sporting a good sheath. His Dam P379 calved at three and has weaned 2/2.



# GYRANDA S104 (AI)

PUREBRED

GYR21MS104 25/7/2020 (26 mths)



GROWTH	BWT	-	-
	200D	+15	63%
	400D	+25	64%
	600D	+25	66%
	MWT	+38	58%
MILK	MILK	+1	31%
	SS	+0.9	67%
FERTILITY	DTC	-1.6	44%
	EMA	+0.2	48%
CARCASS	RIB	+1.1	56%
	RUMP	+0.9	55%
	RBV	-1.1	42%
	IMF	+0.7	56%
PNS	PNS	-	-
	Flight Time	+0	64%
\$ INDEX	DOM	+11	
	EXP	+14	

KR 282/08 1273676  
 KR 189/11 1293527 [189/11]  
 KR 363/5 5A 1252806 [363/5]  
**RED DOC DIABLO 6306**  
 KR 189/11 1293527 [189/11]  
 RED DOC 3167 20132957 [3167]  
 O.X MACKENZIE 767 1294444

WATASANTA BIG BANANA (P)  
 WATASANTA FIDDESTICKS 1504(P)  
 WATASANTA X459 (P)  
**GYRANDA P669(P)**  
 GYRANDA HOSEA H286 (PS)  
 GYRANDA L787  
 GYRANDA J605 (P)

Dam C.I.: 481 days

Morphology: 95%

Wt \_\_\_\_\_

Sc \_\_\_\_\_

\$ \_\_\_\_\_

Notes: Another powerful package in a medium frame. Good tidy sheath and quiet demeanor. Exceptional fats and IMF data. Dam P669 (P) calved at three and has weaned 2/2. Her Dam L787 has weaned 6/6.



# GYRANDA S636 (P)

GYR21MS636 9/11/2020 (22 mths)

PUREBRED

ROSEVALE NODDY A18 (P)  
 GYRANDA FRANKLIN F238 (P)  
 GYRANDA C361 (P)  
**GYRANDA MULGA BILL M482 (P)**  
 MARSTON MULTI SIRE  
 GYRANDA Z131



ROSEVALE GUMPER X546 (P)  
 GYRANDA C224  
 GYRANDA Z179  
**GYRANDA F269**  
 GYRANDA 43N  
 GYRANDA 49Q  
 GYRANDA L26

Notes: Big framed bull. A dark, slick coat with exceptional growth and production potential. He carries a good balance of EBVs across the board. His Dam line is a study in longevity. Dam F269 has weaned 10/11 and will calve out for the last time in September. Her Dam Gyranda 49Q weaned 13/13.

Dam C.I.: 402 days Morphology: 72%

Wt \_\_\_\_\_ Sc \_\_\_\_\_

GROWTH	BWT	-	-
	200D	+17	64%
	400D	+27	68%
	600D	+41	66%
	MWT	+55	61%
MILK	MILK	+3	48%
	SS	+2.4	70%
FERTILITY	DTC	-3.3	53%
	EMA	+2.7	53%
CARCASS	RIB	-0.4	61%
	RUMP	-0.8	60%
	RBV	+0.7	48%
	IMF	+0.1	59%
PNS	PNS	+1.2	-
	Flight Time	+0.3	63%
\$ INDEX	DOM	+23	
	EXP	+34	

\$ \_\_\_\_\_



# GYRANDA X3X4322

GYR21MX3X4322 10/9/2020 (24 mths)

PUREBRED

WIGHTFIELDS DOWNPOUR G21 (P)  
 ROSEVALE KING K88  
 ROSEVALE JADE D175  
**CREE NIAGARA N040 (PS)**  
 CREE F083

EIDSVOLD STATION ZORO Z188 (PS)  
 EIDSVOLD STATION FLETCH F24  
 GYRANDA ESA395  
**GYRANDA L745 (P)**  
 DANGARFIELD PENROSE P194 (P)  
 GYRANDA H341  
 GYRANDA C123

Notes: A clean coated bull with muscle throughout and a good sheath. Out of the commercial herd but his dam (L745) is a classified cow with a perfect calving record weaning 7/7. His EBV data is strong across the board but growth a highlight in the top 5% of the breed.

Dam C.I.: 350 days Morphology: 81%

Wt \_\_\_\_\_ Sc \_\_\_\_\_

GROWTH	BWT	-	-
	200D	+23	63%
	400D	+33	64%
	600D	+47	62%
	MWT	+61	56%
MILK	MILK	+3	42%
	SS	+1	68%
FERTILITY	DTC	-2.2	45%
	EMA	-	-
CARCASS	RIB	-	-
	RUMP	-	-
	RBV	-	-
	IMF	-	-
PNS	PNS	+0.4	-
	Flight Time	+0.11	64%
\$ INDEX	DOM	+29	
	EXP	+38	

\$ \_\_\_\_\_





# GYRANDA S100 (PS) (AI)

PUREBRED

GYR21MS100 23/7/2020 (26 mths)



GROWTH	BWT	+0	65%
	200D	+2	63%
	400D	+4	62%
	600D	+3	65%
	MWT	+12	56%
MILK	MILK	-1	33%
	SS	-0.2	66%
FERTILITY	DTC	-8	42%
	EMA	-1.1	45%
CARCASS	RIB	+0.2	53%
	RUMP	-0.4	52%
	RBV	-0.9	40%
	IMF	+1.2	53%
\$ INDEX	PNS	-	-
	Flight Time	+0.03	61%
\$ INDEX	DOM	+4	
	EXP	+13	

RDF 8052 1274224  
 KR 800/11 1293846 [800/11]  
 KR 307/06 4B 1259421 [307/06]  
**KING RANCH 921/15**  
 WAUKARAU GOLD MINE 6151 99904724  
 KR 110N/09 110/09 N6 1280743 [110/09]  
 KR 23/001 1229754

ROSEVALE BATTALLION E622 (P)  
 ROWANLEA KLUGER K32 (P)  
 ROWANLEA E31 (P)  
**GYRANDA N261 (P)**  
 GYRANDA C834  
 GYRANDA F351  
 GYRANDA W579

Dam C.I.: 548 days

Morphology: 93%

Wt \_\_\_\_\_

Sc \_\_\_\_\_

\$ \_\_\_\_\_

Notes: Dark poll scur commercial bull, well muscled throughout and carrying tremendous IMF. Dam N261 (P) calved at two and has weaned three calves in four years. Her Dam Gyranda F351 weaned nine calves in nine years.



# GYRANDA S420 (PS) (AI)

GYR21MS420 5/8/2020 (26 mths)

PUREBRED

KR 282/08 1273676  
 KR 189/11 1293527 [189/11]  
 KR 363/5 5A 1252806 [363/5]  
**RED DOC DIABLO 6306**  
 KR 189/11 1293527 [189/11]  
 RED DOC 3167 20132957 [3167]  
 O.X MACKENZIE 767 1294444

**GYRANDA N127**  
 ROWANLEA HARRISON H74  
 GYRANDA L231 (P)  
 GYRANDA E1005

Notes: This is a very quiet, very soft and very heavy young bull. A Red Doc calf that is somewhat hairier than the average Gyranda animal but sporting all the right data in all the right places. His Dam N127 has weaned three calves.

Dam C.I.: 670 days Morphology: 94%

Wt \_\_\_\_\_ Sc \_\_\_\_\_

GROWTH	BWT	-	-
	200D	+27	64%
	400D	+35	64%
	600D	+44	67%
	MWT	+53	58%
MILK	MILK	+1	31%
	SS	+1.2	67%
FERTILITY	DTC	+3.4	45%
	EMA	+2.3	48%
CARCASS	RIB	+1.2	55%
	RUMP	+0.9	54%
	RBV	-0.7	42%
	IMF	+0.5	56%
\$ INDEX	PNS	-	-
	Flight Time	-0.01	64%
\$ INDEX	DOM	+16	
	EXP	+18	



\$ \_\_\_\_\_



# GYRANDA X3X5249

PUREBRED

GYR21MX3X5249 23/9/2020 (24 mths)



GROWTH	BWT	-	-
	200D	+7	65%
	400D	+20	65%
	600D	+24	67%
	MWT	+44	61%
MILK	MILK	-2	50%
	SS	+0.9	68%
FERTILITY	DTC	-3.4	53%
	EMA	+3	52%
CARCASE	RIB	+1.4	59%
	RUMP	+1	58%
	RBV	+0.7	47%
	IMF	+0.3	57%
PNS	PNS	-3.2	-
	Flight Time	+0.04	67%
\$ INDEX	DOM	+22	
	EXP	+27	

EIDSVOLD STATION ESX476  
 GYRANDA D562 (PS)  
 GYRANDA A497  
**GYRANDA HARVARD H394**  
 GYRANDA CRACKERJACK V532  
 GYRANDA C831  
 GYRANDA Z303

GYRANDA CESAR C422 (PS)  
 GYRANDA JEREMIAH J164 (PS)  
 GYRANDA COFFEE C671  
**GYRANDA N177(P)**  
 HARTWOOD B-382  
 GYRANDA E667  
 HARTWOOD 711

Dam C.I.: 365 days

Morphology: 83%

Wt \_\_\_\_\_

Sc \_\_\_\_\_

\$ \_\_\_\_\_

Notes: Stylish, large frame bull with loose skin and a tidy sheath. Excellent growth and well muscled. Out of the commercial herd, but a Classified cow that has weaned three calves in three years.



# GYRANDA S688 (P)

GYR21MS688 17/11/2020 (22 mths)

'S' BULL

## SANTA GERTRUDIS MULTIPLE SIRE

SANTA GERTRUDIS MULTIPLE SIRE

## SANTA GERTRUDIS MULTIPLE DAM

SANTA GERTRUDIS MULTIPLE SIRE  
 SANTA GERTRUDIS MULTIPLE DAM  
 SANTA GERTRUDIS MULTIPLE DAM  
 SANTA GERTRUDIS MULTIPLE DAM

Notes: A tidy bull with a slick coat, neat sheath and good hindquarter. DNA got lost in processing but should have some EBVs at sale. His raw data would suggest that this bull has plenty of growth and muscle.

Dam C.I.: N/A Morphology: 74%

Wt \_\_\_\_\_ Sc \_\_\_\_\_

GROWTH	BWT	-	-
	200D	-	-
	400D	-	-
	600D	-	-
	MWT	-	-
MILK	MILK	-	-
	SS	-	-
FERTILITY	DTC	-	-
	EMA	-	-
CARCASE	RIB	-	-
	RUMP	-	-
	RBV	-	-
	IMF	-	-
PNS	PNS	-	-
	Flight Time	-	-
\$ INDEX	DOM	-	-
	EXP	-	-

\$ \_\_\_\_\_



# GYRANDA S298

GYR21MS298 1/9/2020 (25 mths)

'S' BULL

## GYRANDA MONTO M272 (P)

GYRANDA CRACKERJACK V532  
 GYRANDA D549  
 MARSTON G1123 (P)

## GYRANDA J259

WACO FREEMAN (P)  
 TYNDALE REPLAY 167 (AI) (P)  
 BOWENFELS DANELLE 2ND  
 TYNDALE REPLAY 167 (AI) (P)  
 GYRANDA E331  
 GYRANDA Z497

Notes: A big frame, dark coat and massive growth data with 91% morphology. What more could you ask for? His Dam J259 weaned six calves.

Dam C.I.: 526 days Morphology: 91%

Wt \_\_\_\_\_ Sc \_\_\_\_\_

GROWTH	BWT	-	-
	200D	+28	67%
	400D	+26	68%
	600D	+43	70%
	MWT	+64	64%
MILK	MILK	-1	51%
	SS	+1	70%
FERTILITY	DTC	+5.7	53%
	EMA	+3.9	55%
CARCASE	RIB	-0.2	61%
	RUMP	-0.6	60%
	RBV	+1.1	50%
	IMF	-0.4	60%
PNS	PNS	-2.8	-
	Flight Time	+0.06	69%
\$ INDEX	DOM	+17	
	EXP	+22	

\$ \_\_\_\_\_





## GYRANDA S606

GYR21MS606 26/10/2020 (23 mths)

'S' BULL

ROSEVALE BATTALION E622 (P)

### ROWANLEA KLUGER K32 (P)

ROWANLEA E31 (P)

GYRANDA ALIBI A546  
GYRANDA EDITOR E572  
GYRANDA C653

### GYRANDA M325

GYRANDA ALCATRAZ A140 (P)  
GYRANDA F377 (P)  
GYRANDA V199

Notes: Slick coated, young de-horned bull with a very tidy sheath. Dam Gyranda M325 has weaned 4/5, and her Dam weaned nine calves in nine years.

Dam C.I.: 472 days Morphology: 80%

Wt \_\_\_\_\_ Sc \_\_\_\_\_

GROWTH	BWT	-	-
	200D	+11	65%
	400D	+18	66%
GROWTH	600D	+27	65%
	MWT	+47	60%
	MILK	-1	53%
FERTILITY	SS	+1	68%
	DTC	-7.6	56%
CARCASE	EMA	+1.6	52%
	RIB	+0	59%
	RUMP	-0.3	58%
	RBY	+0.3	48%
	IMF	+0.4	58%
	PNS	+4.3	-
\$ INDEX	DOM	+19	
	EXP	+33	
Flight Time	+0.3	68%	

\$



## GYRANDA S678 (PS)

GYR21MS678 3/12/2020 (22 mths)

'S' BULL

ROSEVALE MATLOCK W20  
DANGARFIELD PENROSE P194 (P)  
DANGARFIELD 7064

### GYRANDA MOBY DICK M224 (P)

ROSEVALE GUMPER X546 (P)  
GYRANDA F249 (P)  
GYRANDA V285

EIDSVOLD STATION V162 (PS)  
EIDSVOLD STATION A166 (PS)  
EIDSVOLD STATION U85

### GYRANDA K257

GYRANDA FINNEGAN Y240  
GYRANDA B709  
GYRANDA FANTASY Y327

Notes: A stylish long, dark bull with a good sheath. Exceptional growth and carcass data. Dam K257 calved at two and has weaned five calves in six years. Her Dam B709 weaned eight calves in eight years.

Dam C.I.: 437 days Morphology: 60%

Wt \_\_\_\_\_ Sc \_\_\_\_\_

GROWTH	BWT	-	-
	200D	+21	63%
	400D	+26	66%
GROWTH	600D	+37	64%
	MWT	+55	61%
	MILK	-2	50%
FERTILITY	SS	+0.8	59%
	DTC	+4.7	51%
CARCASE	EMA	+3.5	51%
	RIB	+1	55%
	RUMP	+1.2	54%
	RBY	+0.4	45%
	IMF	-0.1	53%
	PNS	+2.9	-
\$ INDEX	DOM	+16	
	EXP	+18	
Flight Time	+0.24	62%	

\$



## GYRANDA S230 (P)

GYR21MS230 25/8/2020 (25 mths)

'S' BULL

WIGHTFIELDS DOWNPOUR G21 (P)  
ROSEVALE KING K88  
ROSEVALE JADE D175

### CREE NIAGARA N040 (PS)

CREE F083

GYRANDA CRACKERJACK V532  
GYRANDA BANJO B256  
GYRANDA V461

### GYRANDA J561

SANTA GERTRUDIS MULTIPLE SIRE  
GYRANDA X491

Notes: A tall, polled bull with a tidy sheath, smooth coat, clean lines and exceptional fertility characteristics. His Dam Gyranda J561 has weaned seven calves in seven years and her Dam Gyranda X491 weaned 11 calves in 12 years.

Dam C.I.: 361 days Morphology: 75%

Wt \_\_\_\_\_ Sc \_\_\_\_\_

GROWTH	BWT	-	-
	200D	+7	67%
	400D	+9	68%
GROWTH	600D	+14	70%
	MWT	+18	64%
	MILK	+2	52%
FERTILITY	SS	+1.8	71%
	DTC	-11.1	53%
CARCASE	EMA	+1.7	54%
	RIB	+0.4	61%
	RUMP	-0.5	60%
	RBY	+1.4	48%
	IMF	-0.1	59%
	PNS	-2.8	-
\$ INDEX	DOM	+23	
	EXP	+35	
Flight Time	+0.05	67%	

\$





ROSEVALE NODDY A18 (P)  
GYRANDA HOMER H344 (P)  
GYRANDA FANTASIA Y579  
**GYRANDA MANCHESTER M516 (P)**  
EIDSVOLD STATION W650  
GYRANDA B851

CANOWINDRA CENTURION (P)  
GYRANDA DYNAMIC D444 (P)  
GYRANDA 82V  
**GYRANDA L329**  
GYRANDA ALIBI A546  
GYRANDA E591  
GYRANDA C497

Notes: A well covered young bull with a very tidy sheath and slick coat. Fantastic fat data. Out of a Dam Gyranda L329 that has weaned 6/6 so far.

GROWTH	BWT	-	-
	200D	+14	65%
	400D	+27	66%
	600D	+25	64%
	MWT	+59	60%
MILK	MILK	-1	46%
	SS	+1.4	68%
FERTILITY	DTC	-3.2	50%
	EMA	+1.2	50%
CARCASE	RIB	+1.8	54%
	RUMP	+1.8	53%
	RBY	-0.1	42%
	IMF	+0.7	51%
PNS	PNS	+2.8	-
	Flight Time	+0.09	67%
\$ INDEX	DOM	+21	
	EXP	+25	

Dam C.I.: 352 days

Morphology: 79%

Wt \_\_\_\_\_

Sc \_\_\_\_\_

\$ \_\_\_\_\_



ROSEVALE DEMOCRAT G268 (P)  
GYRANDA KENNY K592 (PS)  
GYRANDA F445 (P)  
**BIARA NORTHAMPTON 7089(PS)**  
ROSEVALE BANDANNA F216  
BIARA 2046

GYRANDA D562 (PS)  
GYRANDA HARVARD H394  
GYRANDA C831  
**GYRANDA P265**  
GYRANDA ALCATRAZ A140 (P)  
GYRANDA F779 (P)  
GYRANDA D177

Notes: Check this bull out for an extraordinary combination of muscle (Top 1% of the breed) and fertility (Top 15%). Two normally combative traits. Another son of impressive new sire Biara Northampton with a tidy sheath, good breed character and plenty of beef. Dam P265 calved at three and has weaned 2/2 since. Her Dam Gyranda F779 weaned 9/10.

GROWTH	BWT	-	-
	200D	+13	64%
	400D	+19	65%
	600D	+28	67%
	MWT	+25	60%
MILK	MILK	-1	45%
	SS	+1.7	68%
FERTILITY	DTC	-6.6	50%
	EMA	+5.2	51%
CARCASE	RIB	+0.7	58%
	RUMP	+0.2	57%
	RBY	+1.4	45%
	IMF	-0.1	58%
PNS	PNS	-	-
	Flight Time	-0.03	66%
\$ INDEX	DOM	+28	
	EXP	+37	

Dam C.I.: 379 days

Morphology: 72%

Wt \_\_\_\_\_

Sc \_\_\_\_\_

\$ \_\_\_\_\_





## GYRANDA S432

GYR21MS432 30/9/2020 (24 mths)

'S' BULL

ROSEVALE NODDY A18 (P)  
GYRANDA HOMER H344 (P)  
GYRANDA FANTASIA Y579  
**GYRANDA MANCHESTER M516 (P)**  
EIDSVOLD STATION W650  
GYRANDA B851

ROSEVALE NODDY A18 (P)  
GYRANDA FRANKLIN F238 (P)  
GYRANDA C361 (P)  
**GYRANDA K445**  
EIDSVOLD STATION T438  
GYRANDA Y509

Notes: A dark coated bull with a good sheath and thick across the loin. Great temperament and fertility data with a dam - K445 that has weaned 7/7. Her Dam - Y509 weaned 9/10.

Dam C.I.: 365 days Morphology: 78%

Wt \_\_\_\_\_ Sc \_\_\_\_\_

GROWTH	BWT	-	-
	200D	+5	67%
	400D	+10	68%
	600D	+14	70%
	MWT	+21	63%
	MILK	-1	49%
FERTILITY	SS	-0.2	70%
	DTC	-4.9	52%
CARCASE	EMA	+1.3	52%
	RIB	+0.5	59%
	RUMP	+0.3	58%
	RBV	+0.6	46%
	IMF	+0.4	58%
	PNS	+5.6	-
\$ INDEX	DOM	+15	
	EXP	+21	

\$



## GYRANDA S234

GYR21MS234 1/9/2020 (25 mths)

'S' BULL

STRATHMORE E23

**STRATHMORE M230 MANUEL (PS)**

STRATHMORE G705

GYRANDA CRACKERJACK V532  
GYRANDA C160  
GYRANDA Z131  
**GYRANDA G849**  
GYRANDA COMMANCHEE V178  
GYRANDA C855  
GYRANDA V277

Notes: Long as a train. Good clean coat and plenty of power. This bull carries growth and EMA EBVs in the top 10% of the breed...and what you see is what you get. Dam G849 has weaned 8/9 including a bull sold to Donald Joyce in 2019 for \$12,000 and an \$11,000 bull sold to Darcy and Kara Knudsen last year.

Dam C.I.: 405 days Morphology: 82%

Wt \_\_\_\_\_ Sc \_\_\_\_\_

GROWTH	BWT	-	-
	200D	+19	67%
	400D	+31	69%
	600D	+40	70%
	MWT	+66	63%
	MILK	+1	45%
FERTILITY	SS	+0.8	71%
	DTC	+2.4	50%
CARCASE	EMA	+4.2	53%
	RIB	-1.6	60%
	RUMP	-2.3	59%
	RBV	+1.5	47%
	IMF	-0.1	58%
	PNS	-	-
\$ INDEX	DOM	+25	
	EXP	+28	

\$



## NORMANBY 129

NOR21M129 15/10/2020 (23 mths)

'S' BULL

**STRATHMORE MASTER M326 (AI)**

FISHINGTON CECIL  
FISHINGTON GILLIGAN G051 (P)  
FISHINGTON E020  
**GYRANDA L205 (P)**  
EIDSVOLD STATION ESX476  
GYRANDA G287  
GYRANDA Y315

Notes: A very dark bull with a tidy sheath and genuine breed character. Long, square and packing plenty of punch, this Normanby son of Strathmore Master delivers plenty of the growth and carcass you are looking for.

Dam C.I.: N/A Morphology: 78%

Wt \_\_\_\_\_ Sc \_\_\_\_\_

GROWTH	BWT	-	-
	200D	+13	58%
	400D	+25	61%
	600D	+28	57%
	MWT	+32	54%
	MILK	+3	42%
FERTILITY	SS	-	-
	DTC	+2.4	43%
CARCASE	EMA	+3.4	45%
	RIB	+1.3	52%
	RUMP	+0.9	52%
	RBV	+0.3	41%
	IMF	+0.2	51%
	PNS	-	-
\$ INDEX	DOM	+17	
	EXP	+15	

\$



## GYRANDA S192 (PP)

GYR21MS192 19/11/2020 (22 mths)

'S' BULL



TYNDALE REPLAY 167 (AI) (P)  
GYRANDA GARFIELD G302 (P)  
GYRANDA Z131

**GYRANDA KALVIN K582 (P)**

SANTA GERTRUDIS MULTIPLE SIRE  
GYRANDA C735 (P)  
GYRANDA A523 (P)

GYRANDA CESAR C422 (PS)  
GYRANDA JEREMIAH J164 (PS)  
GYRANDA COFFEE C671  
**GYRANDA Q483 (P)**  
CANOWINDRA CENTURION (P)  
GYRANDA E721 (P)  
MARSTON D539

Notes: Lovely looking, medium framed bull with a great sheath and good carcass. A younger homozygous poll calf with excellent fat data. Dam Q483 has weaned 2/2 and is pregnant again. Grand Dam E721 weaned 9/10.

Dam C.I.: 329 days Morphology: 84%

Wt \_\_\_\_\_ Sc \_\_\_\_\_

GROWTH	BWT	-	-
	200D	+8	65%
	400D	+12	67%
	600D	+21	68%
	MWT	+27	61%
	MILK	+1	46%
FERTILITY	SS	+0.6	69%
	DTC	+0.8	54%
CARCASE	EMA	+2.4	53%
	RIB	+1.3	60%
	RUMP	+1	59%
	RBV	+0.3	47%
	IMF	+0.2	59%
	PNS	+1.5	-
\$ INDEX	DOM	+10	
	EXP	+14	

\$



# GYRANDA S574 (P)

GYR21MS574 6/11/2020 (22 mths)

'S' BULL

WIGHTFIELDS DOWNPOUR G21 (P)  
ROSEVALE KING K88  
ROSEVALE JADE D175

**CREE NIAGARA N040 (PS)**

CREE F083

EIDSVOLD STATION V162 (PS)  
EIDSVOLD STATION A166 (PS)  
EIDSVOLD STATION U85

**GYRANDA M407**

TYNDALE REPLAY 167 (AI) (P)  
GYRANDA E439  
GYRANDA Z143

**Notes:** Framey, clean coated bull with plenty of growth potential. Dam M407 weaned four calves in five years and her Dam E439 weaned nine calves in ten years.

Dam C.I.: 456 days    Morphology: 90%

Wt \_\_\_\_\_ Sc \_\_\_\_\_

GROWTH	BWT	-	-
	200D	+11	62%
	400D	+15	62%
	600D	+19	63%
	MWT	+19	59%
	MILK	+4	47%
FERTILITY	SS	+1.3	58%
	DTC	-3.2	50%
	EMA	+1.1	50%
CARCASS	RIB	+0.8	54%
	RUMP	+0.7	53%
	RBV	+0.1	43%
	IMF	+0.2	51%
	PNS	-2.1	-
\$ INDEX	Flight Time	+0.12	66%
	DOM	+13	
	EXP	+17	



# GYRANDA S312 (P)

'S' BULL



JESTER J20 (AI) (P)  
WARENDA D696 (P)  
KIT KAT K19 (P)  
**GYRANDA LONGSHOT L110(P)(AI)**  
GYRANDA BOMBER B276  
GYRANDA H663  
GYRANDA Z537

ROSEVALE NODDY A18 (P)  
GYRANDA HOSEA H286 (PS)  
GYRANDA BUBBLES B157  
**GYRANDA N119 (PP)**  
GYRANDA CESAR C422 (PS)  
GYRANDA L131 (P)  
GYRANDA E105

GROWTH	BWT	-0.1	65%
	200D	+13	66%
	400D	+19	67%
	600D	+27	67%
	MWT	+31	60%
	MILK	+3	47%
FERTILITY	SS	+0.7	70%
	DTC	+2.5	53%
	EMA	+2.4	52%
CARCASS	RIB	+1	57%
	RUMP	+0.6	56%
	RBV	+0.3	46%
	IMF	+0	56%
PNS	PNS	+0	-
	Flight Time	-0.05	67%
\$ INDEX	DOM	+12	
	EXP	+13	

Dam C.I.: 369 days

Morphology: 92%

Wt \_\_\_\_\_

Sc \_\_\_\_\_

\$ \_\_\_\_\_

**Notes:** A very impressive bull by Gyranda Longshot L110. Plenty of meat, lovely fat cover and 92% morphology. Dam N119 (P) has weaned 4/4. Her Dam Gyranda L131 was sold to Normanby Stud in 2017 and interestingly her weaner bull calf has come back up to Gyranda this year for sale next year.



99

**GYRANDA S350 (PS)**

**'S' BULL**  
GYR21MS350 2/9/2020 (25 mths)



	BWT	-	-
GROWTH	200D	+10	67%
	400D	+17	68%
	600D	+21	70%
	MWT	+44	64%
	MILK	+3	52%
FERTILITY	SS	+1.5	70%
	DTC	-7.2	52%
CARCASE	EMA	+0.3	53%
	RIB	-0.3	60%
	RUMP	-1.1	59%
	RBV	+0.6	48%
	IMF	+0.2	59%
	PNS	-2.4	-
	Flight Time	+0.14	67%
\$ INDEX	DOM	+18	
	EXP	+29	

WIGHTFIELDS DOWNPOUR G21 (P)  
ROSEVALE KING K88  
ROSEVALE JADE D175  
**CREE NIAGARA N040 (PS)**  
CREE F083

GYRANDA COLUMBUS V290  
GYRANDA C834  
MARSTON IP471 (P)  
**GYRANDA H207**  
GYRANDA CRACKERJACK V532  
GYRANDA B285  
GYRANDA 67S

Dam C.I.: 369 days

Morphology: 78%

Wt \_\_\_\_\_

Sc \_\_\_\_\_

\$ \_\_\_\_\_

Notes: An impressive big bull. Dark shoulders, sleek coat and a good sheath. Dam H207 maintains a perfect record (8/8) including an \$11,000 bull sold to John Cruikshank in 2019.

100

**GYRANDA S208**

**'S' BULL**  
GYR21MS208 11/9/2020 (24 mths)



	BWT	-	-
GROWTH	200D	+16	66%
	400D	+24	67%
	600D	+39	69%
	MWT	+45	62%
	MILK	+0	45%
FERTILITY	SS	+1.2	70%
	DTC	+1.6	51%
CARCASE	EMA	+1.7	52%
	RIB	-0.6	59%
	RUMP	-1.2	58%
	RBV	+0.2	46%
	IMF	+0.1	57%
	PNS	-1.7	-
	Flight Time	+0.03	67%
\$ INDEX	DOM	+14	
	EXP	+21	



ROSEVALE NODDY A18 (P)  
GYRANDA FRANKLIN F238 (P)  
GYRANDA C361 (P)  
**GYRANDA MULGA BILL M482 (P)**  
MARSTON MULTI SIRE  
GYRANDA Z131

WARENDA CLIFTON  
TOOKEY CREEK GURU G34 (P)  
TOOKEY CREEK 5409 (P)  
**GYRANDA L829 (P)**  
GYRANDA FERNANDO F804  
GYRANDA J311  
GYRANDA X595

Dam C.I.: 366 days

Morphology: 83%

Wt \_\_\_\_\_

Sc \_\_\_\_\_

\$ \_\_\_\_\_

Notes: Big growthy bull with a slick coat and loose skin. An impressive hindquarter and great growth data. Dam Gyranda L829 (P) calved at two and retains a perfect 6/6 weaning record. Her last bull calf sold to Garth Christianson for \$15,000 last year.



# GYRANDA S246 (PS)

GYR21MS246 1/9/2020 (25 mths)

'S' BULL



ROSEVALE NODDY A18 (P)  
GYRANDA FRANKLIN F238 (P)  
GYRANDA C361 (P)

**GYRANDA MULGA BILL M482 (P)**  
MARSTON MULTI SIRE  
GYRANDA Z131

HARDIGREEN PARK MOUNTAIN (PS)  
TRIPLE S J14 (PS)  
TRIPLE S D19

**GYRANDA M311 (P)**  
GYRANDA FLYNN Y226  
GYRANDA G527  
GYRANDA D109

Notes: A big growthy poll scur bull. Slick coat and plenty of loose skin to grow into. A quiet bull with a massive scrotal, 80% morphology and an impressive combination of growth and fertility data. Dam Gyranda M311 (P) has had four calves in five years, including a \$16,000 bull sold to Finn Hewitt last year.

Dam C.I.: 476 days    Morphology: 80%

Wt \_\_\_\_\_ Sc \_\_\_\_\_

GROWTH	BWT	-	-
	200D	+19	66%
	400D	+22	67%
	600D	+39	69%
MILK	MWT	+51	61%
	MILK	+0	46%
	SS	+2.7	69%
FERTILITY	DTC	-0.5	52%
	EMA	+0.7	52%
CARCASS	RIB	+0.5	60%
	RUMP	+0	59%
	RBV	+0.2	47%
	IMF	+0	58%
	PNS	+0	-
\$ INDEX	Flight Time	+0.2	68%
	DOM	+15	
	EXP	+26	

\$

## SALE SUMMARY 2022

### GYRANDA ELITE BULLS

NO.	GROSS \$	TOP \$	AVG \$

### CLASSIFIED 'S' BULLS

NO.	GROSS \$	TOP \$	AVG \$

### PUREBRED HERD BULLS

NO.	GROSS \$	TOP \$	AVG \$

### SALE TOTAL

NO.	GROSS \$	TOP \$	AVG \$



**"Thank you for your support"**

Patrick, Dominic, Peter, Nikki, Josephine and Christopher Mahony



# STUD STOCK – AUCTION TERMS & CONDITIONS OF SALE

## IMPORTANT NOTICE: All bids shall be treated as offers made upon the following Terms and Conditions of Sale and all persons present are admitted to attend the sale on the basis that they have notice of these Terms and Conditions.

- The highest bidder shall, subject to Condition 2, be the Purchaser provided that the Vendor reserves the right to bid either by himself or through his Agent or Auctioneer and should any dispute arise among the bidders for any lot, during or immediately after the sale of the lot, it shall be settled at the Auctioneer's absolute discretion who may, should one of the disputants advance, put the lot or lots up again. The bidding from time to time shall be regulated by the Auctioneer and no bid shall be retracted.
- The sale will be conducted on a "Sale" or "No Sale" basis whereby the lot for sale shall be knocked down to the highest bidder, but the sale will be subject to the acceptance of the highest bid by the Vendor who will immediately after the fall of the hammer declare "Sale" or "No Sale". Should the Vendor reject the bid of the highest bidder such bidder will have the right of first refusal of the lot at the Vendor's nominated price for one hour after the lot has been passed out of the ring on the Terms and Conditions herein set forth in so far as they shall apply.
- The details of the Purchaser, the purchase price and the lot sold as recorded by the sale clerk for and on behalf of the Auctioneer shall be equally binding on both Purchaser and Vendor.
- The Auctioneer expressly reserves the right, without giving any reasons therefore, to:
  - Refuse to acknowledge any bid;
  - Withdraw any lot or lots before or during the sale;
  - Exclude any person from the auction venue should it think fit.
- Each lot in all cases shall be at the risk and expense of the Purchaser upon acceptance of his bid by the Vendor or upon acceptance of the highest bidder's offer by the Vendor whichever shall be the earlier.
- Except as expressly provided in these Terms and Conditions of Sale no guarantee or warranty shall be given in respect of any lot sold under these Conditions as to pedigree, sex, age, breeding condition or otherwise howsoever, and no guarantee, warranty or condition whatsoever shall be implied from any affirmation made before or at the time of the sale, or from any circumstances of the sale, but in all cases where a guarantee is intended the same shall attach and be enforceable only if reduced to writing before delivery of the lot and signed by the Vendor or by the Auctioneer acting as agent for the Vendor, and the absence of such writing shall be conclusive evidence in case of dispute that no guarantee, warranty or condition whatsoever was given or implied.
- In the event of any dispute in respect to the sale of any lot:
  - The Purchaser shall nevertheless be obliged to pay to the Auctioneer the full purchase price and any other monies or interest payable by the Purchaser in accordance with these terms and conditions;
  - The Vendor and the Purchaser shall resolve the dispute between themselves;
  - The Auctioneer shall have no liability or responsibility in regard to the dispute; and
  - No lot shall be returned to the Auctioneer and the Purchaser shall indemnify the Auctioneer for all costs, expenses and damages which the Auctioneer is put to or incurs by reason of the Purchaser so doing.
- The name of the Vendor for whom the Auctioneer acts is acknowledged to have been furnished to Purchasers prior to the sale and further particulars will in all cases be furnished to a Purchaser if required. In the case of any disputes the remedy of the Purchaser shall be against the Vendor only and in no case or under any circumstances against the Auctioneer who is to be regarded for all intents and purposes as agent for a disclosed principal.
- PAYMENT** — Unless prior credit arrangements have been made in writing with the Auctioneer the full purchase price for each lot shall be due and payable to the Auctioneer in cash upon acceptance of the highest bid or the highest bidder's offer by the Vendor and prior to delivery. Notwithstanding that delivery is given to or possession obtained by the purchaser or his representative prior to the payment of the purchase money in full the property in any lot which is sold shall not pass to the Purchaser until the full purchase price and all cheques, promissory notes, bills of exchange, acceptance orders or drafts given in connection with such payment have been paid and liquidated, and until property shall pass, the Purchaser shall hold such lot as bailee, provided that in all cases should such payment not have been made and liquidated within 14 days of the date of the sale the Auctioneer reserves the right to—
    - Rescind the contract on behalf of the Vendor and repossess and resell any lot;
    - Recover from the Purchaser interest upon the purchase price at a rate per annum which aggregates the AMBA Bill Rate plus two per centum. For the purposes of this condition, the expression "the AMBA Bill Rate" is the rate published by the Australian Merchant Bankers Association in good faith as at the date of the sale as its bill rate for 180 day bills of exchange expressed as a percentage per annum. If at any time the AMBA Bill Rate becomes unavailable for any reason, the Auctioneer shall determine and advise the Purchaser of the interest rate to apply for the purposes of this condition.
  - The Auctioneer is selling as the del credere agent of the Vendor and the full purchase price of any lot sold shall be payable by the Purchaser to the Auctioneer and be fully recoverable by the Auctioneer in its own name.
- If the Purchaser shall neglect or fail to comply with any of the within conditions, any lot purchased by him may be immediately resold by public auction or private contract, with or without notice, at the risk of the former Purchaser, who will be held responsible for all loss and expenses arising out of such resale, and shall not participate in any profit accruing therefrom.
- Any Vendor or Purchaser removing the sale number from any lot after it has been sold will fully indemnify all affected parties for any loss, costs or damage should the lot be wrongly delivered.
- The Purchasers, if any more than one, shall be jointly and severally bound by these Terms and Conditions, and shall jointly and severally carry out and perform same.
- Any person who advances a bid on a lot shall do so on the expressed condition and understanding that should that person's bid be the highest bid and such bid is accepted by the Vendor, then that person will be held personally liable for the price so agreed upon, regardless of the fact that that person may be acting on behalf of another party, either disclosed or undisclosed to the Vendor or Auctioneer, provided however, that this Condition shall not in any way negate the Vendor's right to claim against any principal and in such case the bidder's liability shall be construed to be by way of guarantee.
- The Auctioneer may, should it think fit, make arrangements on a Purchaser's behalf for the feeding, watering, trucking, shipping of and general attendance to any lot after sale but no responsibility will be accepted by the Auctioneer and all such service will be at the Purchaser's risk and expense.
- No lot will be delivered until the sales invoice has been checked and signed by the Purchaser or his duly authorised representative.
- Each lot in all cases shall be sold with all faults, if any, and excepting those conditions and warranties implied by the Trade Practices Act or any applicable State legislation which cannot be contractually excluded and excepting conditions and warranties expressly contained in these Terms and Conditions of Sale, any express or implied condition, statement of warranty, statutory or otherwise, is hereby excluded. The Auctioneer is not liable in respect of any error, misdescription or omission in any particulars appearing or stated regarding the description of pedigrees of any lot offered for sale and no such error, misdescription or omission shall entitle the Purchaser to annul the sale or reject the lot or claim any compensation, damage or abatement in price.
  - Each lot will be sold subject to passing all veterinary tests required by the law of the state or country to which the Purchaser intends to transport that particular lot, such tests to be undertaken at the Purchaser's expense and concluded immediately following the sale. In the event of a lot failing to pass these tests, the sale shall be null and void, any purchase moneys paid by the Purchaser shall be refunded and property in the lot shall revert to or remain with the Vendor.
- Guarantees of Fertility—**
  - BULLS** - Save and except for calves at foot, all bulls are guaranteed breeders and to so prove by the later of:
    - six months after the date of sale or
    - the animal reaching the age of 24 months
  - FEMALES** - Save and except for female calves at foot, all females are guaranteed to be in calf or go into calf by the later of:
    - 6 months of the date of sale
    - the animal reaching the age of 30 monthsA positive pregnancy test certified by a qualified veterinary surgeon shall be sufficient evidence that the animal is in calf.
  - Claims under Clauses 17(1) and 17(2).** A claim that an animal has failed to satisfy a guarantee of fertility under Clause 17(1) or 17(2) must be made to the Vendor within the relevant guarantee period but prior to the animal entering a quarantine area other than on the Vendor's property.
    - All claims must be accompanied by a certificate from a registered veterinarian surgeon in accordance with the guidelines established by the Australian Association of Cattle Veterinarians which must clearly identify the basis of the claim.
    - Subject to Clause 17(9), infertility resulting from injury or disease occurring after the sale of the animal is not covered by this guarantee.
    - The Vendor retains the right to have the animal placed on a property nominated by him or returned to his own property for further assessment of fertility for a period not exceeding six months. If the animal proves fertile within the period such status must be confirmed by a certificate issued by a registered veterinary surgeon in accordance with the guideline established by the Australian Association of Cattle Veterinarians and costs incurred must be borne by the Purchaser. If the animal is not proven fertile within the period, the costs incurred must be borne by the Vendor.
  - LIABILITY OF A VENDOR** - Except for costs defined elsewhere in the conditions of sale, the liability of a Vendor in respect of claims relating to fertility shall not exceed the purchase price of the animal(s) or provide mutually agreed upon replacement animal(s).
  - In the event of a claim being substantiated:
    - The purchase price shall be refunded within 14 days unless a mutually agreed upon replacement animal has been provided.
    - The animal(s) which are the subject of the claim shall automatically become the property of the Vendor and be returned to him or disposed of according to his instruction at his expense.
  - Subject to Clause 17(9), this guarantee is of no effect if:
    - The animal is returned to the Vendor.
      - In poor physical condition or with any injury;
      - Tests carried out on behalf of the Vendor within fourteen days of such return proved positive to any diseases which may affect the animal's fertility or ability to breed naturally; or
    - The Purchaser has collected and stored semen from a bull or
    - The Purchaser attempted any form of embryo collection from a female.
  - In the event of a dispute as to whether a lot is a breeder, such dispute shall be resolved by the Vendor and the Purchaser. The Auctioneer, while he will use his best endeavours to assist, shall have no liability or responsibility in that regard. If an animal is alleged or proved not to be a breeder, the Purchaser must nevertheless pay the Auctioneer the full purchase price and any other monies or interest payable by the Purchaser in accordance with these Terms and Conditions.
  - EVIDENCE OF FERTILITY** — A Certificate issued by a registered veterinary surgeon at or before the time of sale than an animal is fertile (unless it is a certificate stating in respect of a female that she is in calf at the time of sale) does not, of itself, satisfy or discharge the Vendor's obligations under the guarantee of fertility given under this Clause 17. All animals, except calves at foot, must prove their fertility within the relevant guarantee period.
  - RELIEF FROM GUARANTEE** — If the Vendor seeks to be relieved from the obligations which would otherwise be imposed upon him by this clause by virtue of Clauses 17(3)(b) or 17(6)(a), the onus of proof is upon the Vendor to establish that:
    - The animal suffered the injury or disease or is in poor physical condition due to circumstances and events occurring after the sale, and
    - The injury, disease of physical condition is the sole cause of the animal's infertility or failure to prove fertility within the guarantee period.
  - DEFINITION** — For the purpose of this Clause 17, the expression "guarantee period" means:
    - in relation to bulls — the period specified in Clause 17(1) as being the period in which the bull must prove his fertility; and
    - in relation to females — the period specified in Clause 17(2) as being the period in which the female must go into calf.
- Each lot shall be at the risk of the Vendor in respect of any damage or injury, whether by disease, accident or otherwise, or whether caused by the negligence of the Auctioneer for the period that the lot be in the custody of the Auctioneer, unless such lots shall have been sold in which latter case such lot shall be at the risk of the Purchaser in all such respects.
  - If any Vendor brings to the sale premises any lot which is dangerous, or infected with any disease, that Vendor shall be liable for all injury, damages, costs, losses or expenses which the Auctioneer may sustain, incur or be put to either directly or indirectly as a result of the Vendor so doing. The Auctioneer reserves the right, at its absolute discretion, to exclude from the sale, or put out of the sale venue or dispose of, any lot which in its opinion shows signs of any disease, whether infectious, contagious or not, or of any serious fault or of being dangerous.
- DELIVERY** — Except at the discretion of the Auctioneer no lot shall be delivered to the Purchaser unless payment of the purchase money together with any additional charges incurred including those expenses incurred by the Auctioneer pursuant to Condition 14 hereof, is first made by the Purchaser to the Auctioneer. Release of lots may be withheld by the Auctioneer until personal cheques are cleared.
- In these Conditions—
  - References to "Auctioneer" shall be taken to mean as the context so admits, the Selling Agent or any member, subsidiary or related corporation or body, officer, agent or employee thereof, authorised by the Vendor to conduct the sale of the lot;
  - "Purchaser" shall have the meaning ascribed to it in Condition 1;
  - "Vendor" shall mean the person or corporation upon whose account lots are offered for sale and where a stud or farm is named shall mean the proprietor of that stud or farm;
  - "Lot" shall be taken to mean the animal offered for sale and/or sold by the Auctioneer on behalf of a Vendor.

## IMPORTANT NOTICE

The Selling Agent, its members, subsidiary or related corporations, officers, agents, and employees for themselves and for those for whom they act while exercising due care provide all information without responsibility and give no guarantee whatsoever as to its accuracy.

All persons who attend the Sale do so entirely at their risk and the Selling Agent, its members, subsidiary or related corporations, officers, agents, employees and its principals, for themselves and for those for whom they act, do not assume or accept any responsibility or liability of whatever nature for any injury or damage whatsoever which may occur.

The hammer price is exclusive of GST but GST will be applied to the final hammer price and included in the invoice.