



**2021 SALE**  
**SATURDAY 18th September**  
Commencing 12 noon

*Comprising:*

**84 Classified Santa Gertrudis Bulls**  
**11 Purebred Santa Gertrudis Bulls**

**Information Day & Pre-Sale Inspection**  
**Thursday 12th August 2021**  
**9.00 am at Gyranda Saleyards**

Enquiries:

**Peter & Nikki Mahony**  
Gyranda, Theodore Q 4719  
(07) 4993 7144 0438 931 657  
peter@gyranda.com.au  
[www.gyranda.com.au](http://www.gyranda.com.au)



**We offer appealing rebate options to all outside agents who introduce clients. Enquire at your local agent of choice or alternatively contact the settling agents below.**

Selling Agents:



Taroom - Ph (07) 4627 3027 Fax (07) 4627 3048  
Graeme McAdam 0428 273 028 | Jordan Wenham 0437 715 017  
GDL Stud Stock - Mark Duthie 0448 016 950 | Georgie Connor 0428 347 550



## The Gyranda Blue Ribbon Guarantee



70<sup>+</sup>%

All bulls have passed a stringent soundness evaluation. Over a decade of selection at Gyranda means that our bulls naturally and consistently meet these breeding standards at a younger age.



Four and a half star (out of 5) rating for data accuracy. We measure more traits, more accurately, more often and our herd has been measured longer ensuring that the figures presented are a true representation of the animal purchased.



We have utilised EBV data for selection for nearly 30 years... and it shows. Figures for growth, fertility and carcass characteristics are consistently in the top tier of the breed and improving annually.

### Classified 'S'

Most bulls sold at the Gyranda annual sale have been classified.

### Structure and Temperament

Few other studs have been more rigorous for longer in selecting against poor structure and temperament than Gyranda. Feet, leg structure, sheath and temperament are consistently good across the herd.

### Fertility

The bull you buy comes from a cow whose primary selection criteria has been her capacity to produce a calf every year. Joined as a yearling she has demonstrated the capacity to fall pregnant early and be back in calf after a three month joining period.



### Libido

All Gyranda stud sires are joined in multi-sire herds that replicate the joining conditions faced by the vast majority of their sons. They must be able to compete for cows and deliver calves in this environment or they are culled. This sex drive has been demonstrated to be highly heritable. Gyranda is unique in pressuring our bulls in this way, and we have been doing it since 2009.

**The bulls presented at this sale are selected to perform within your herd;** to improve your genetic gain and your profitability. A Gyranda bull is an indispensable tool for bettering your business.

We take pride in being able to offer a blue ribbon guarantee on all bulls provided at the Gyranda sale. Our measurement and selection pressure on this bull and the generations of cattle before him leave you free to sharpen your selection criteria and choose the bull best suited to your herd based on EBV data, coat, poll characteristics, muscling, weight for age, depth of body, frame score or other criteria you may have.

The bulls presented here today are well balanced animals; a trait we see as essential to push the barriers of growth and yield whilst working within the boundaries of nature. They are young herd builders with the full genetic toolbox of the Gyranda herd at their disposal and maintain an enviable variety of characteristics within what remains a distinctly Santa Gertrudis herd of superior growth and adaptability.

**We commend them to you.**



# The Gyranda Operation

## Gyranda History – A Family Affair

The Gyranda property originally formed part of the Joyce & Joyce operation founded by Fitzpierce and Eileen Joyce and, later, run in partnership with his sons E.B. 'Barney' Joyce and Raoul Joyce. In 1967, the Eidsvold Station based partnership was divided. Gyranda Pastoral Company was established as a partnership between Raoul and Ida Joyce and their four sons to run the Properties situated on the Dawson River.

Gyranda Pastoral Company was owned and operated by Burnett and Louise Joyce until 2011 when the fourth generation - Peter and Nikki Mahony took over the reins.

## Gyranda & Santa Gertrudis

In 1953 three Santa Gertrudis bulls were purchased by Joyce & Joyce from King Ranch Australia (imported from the ranch headquarters in Texas, USA). In 1954 purebred Santa Gertrudis females were imported from the Armstrong Ranch, Texas, USA.

This was the beginning of the Santa Gertrudis operation on Gyranda. A grading-up program was commenced using existing high quality Hereford females. A subsequent crossbreeding and grading-up program was begun in 1972.

Purebred Brahman bulls were used over Santa Gertrudis females. Their progeny was crossed back to Classified Santa Gertrudis Bulls and the best of the third cross animals were introduced back into the stud herd.

Our current operation retains Gyranda Bulls as sires in the Stud herd as well as the substantial commercial herds. Progressive bloodlines from other Santa Gertrudis Studs are also sourced.



**First Cross Yearlings 1955**

## Our Current Operation & Future

Our business is ultimately about the production of high quality beef; in our own commercial operation and those of our clients. The highest priority is placed on increased productivity and decreased costs. In our management this translates to selection for high performance in reproduction and growth under paddock conditions.

Carcass traits are monitored through ultrasound scanning and feedback from slaughter cattle. Feedlot daily weight gains and feed conversion ratios are monitored from several hundred steers and heifers finished in feedlots annually.

Our stud operation functions as a tool through which a high standard of excellence is achieved and maintained across the entire herd.

Growth, fertility and carcass EBV's generated since 1985 through Breedplan provide a valuable tool for our own selection of cattle and to aid our clients in more accurately selecting for their operation.

Ongoing involvement in research, including trials run by the CRC (Co-operative Research Centre), the DPI and The University of Queensland, reflect our commitment to the future of the beef industry and give direction to our commercial and stud operations. Results have helped us identify more accurate and progressive ways to refine our selection for highly fertile, fast growing, efficient beef cattle.

All Sires used in the Gyranda breeding herd undergo a series of fertility evaluations prior to joining.

In multiple sire herds all calves are assigned sires using DNA technology.

This creates a direct link between the test results and the number of calves each bull actually sires.

Bulls must pass a thorough soundness evaluation prior to being offered for sale.



**First Gyranda Sale 1968**

# Important Notices

The Selling Agent, its members, subsidiary or related corporations, officers, agents and employees for themselves and for those for whom they act, while exercising due care, provide all information without responsibility and give no guarantee whatsoever as to its accuracy.

All persons who attend the sale do so entirely at their risk and the Selling Agent, its members, subsidiary or related corporations, officers, agents employees and its principals, for themselves and for those for whom they act, do not assume or accept any responsibility or liability of whatever nature for any injury or damage whatsoever which may occur.

**NOTICE TO BUYERS:** In the interest of buyers all instructions covering the delivery of cattle purchased at the sale must be given in writing and signed by the buyer or his representative.

**HEALTH:** Gyranda herds are situated in a TB and C AB free area and all bulls have been inoculated for Redwater (Tickfever) and 5 in 1. They have also been inoculated for Vibriosis, Botulism and Three Day Sickness (Bovine Ephemeral Fever; yearly booster recommended due June 2021). The Gyranda herd was tested negative for Bovine Johnes Disease BJD in May 2019 and currently carries a JBAS 7 standard.

**REBATE: The vendor agrees to pay 4% rebate on Bull Purchases to outside agents under the following conditions:**

- **Buyers must be accompanied in person by the agent to either the sale or the open day and noted as such.**
- **Invoices must be paid in full by 5pm on 1st October 2021.**

**Alternatively the vendor agrees to pay 3% rebate on Bull Purchases to outside agents under the following conditions:**

- **Buyers must be introduced in writing to Gyranda Pastoral Company or Selling Agents at least 24 hours prior to sale.**
- **Invoices must be paid in full by 5pm on 1st October 2021.**

**Note: VENDOR will pay rebate after invoices have been paid in full. Rebate will not be allowed outside these conditions.**

**FREE FREIGHT AND FREIGHT REBATE: Gyranda will deliver bulls free to local areas including Theodore, Moura, Biloela, Monto, Eidsvold and Taroom. For those outside of these areas we offer a freight rebate to those purchasing five or more bulls of up to \$500, GST inclusive, upon presentation of the paid freight invoice to either their preferred agent or Gyranda Pastoral Co.**

## SEMEN MORPHOLOGY TESTING

A Semen morphology examination on the sale bulls was conducted by Ms. Kelli Prosser (Australian Cattle Veterinarians Sperm Morphology Accreditation Number SME0709). The Total Normal Percentage of sperm for each bull is stated on the supplementary sheet. All bulls with abnormal sperm percentages above the recommended Australian Cattle Veterinarians' thresholds for specific and total abnormalities have been removed from the sale.

Bulls with morphology results from 70% - 100% Normal Sperm are deemed as fertile for single sire mating. Bulls with results from 50% - 69% Normal Sperm are deemed as acceptable for multiple sire mating.

Evidence supports that sperm morphology is highly related to fertility and reflects the status of the testes and the transportation and maturation process in the epididymis.

The Bull Power Project found that semen quality, particularly the percentage of normal sperm, was consistently related to the number of calves sired by the bull in a limited joining period.

### Our Guarantee

All bulls have undergone rigorous and independent assessment for structural soundness and fertility, including a semen morphology test and physical evaluation of the bull's reproductive tract.

On top of this we offer one of the strongest guarantees of any Santa Gertrudis seed stock breeders.

All bulls sold by us are fertile and structurally sound to the best of our knowledge.

If a bull becomes infertile or breaks down due to reasons other than injury or misadventure, at any time within nine month from date of sale we will:

- Provide you with a satisfactory replacement if available, or
- Issue you with a credit (equal to the purchase price minus salvage value) that may be used to purchase any bull at our next sale.

This is not a life insurance policy. Normal care needs to be taken as we cannot replace an animal that is injured or dies for any reason. We recommend you insure animals for full loss of use – an insurance service will be available on Sale Day.

The guarantee strictly covers the purchase value of the bull, without interest cost and damages.

Given the often ambiguous nature of claims, a veterinary inspection (and appropriate testing) of the bulls and a certificate / letter from the vet confirming the infertility or physical 'break down' must accompany any guarantee claim.

This guarantee is in addition to normal terms and conditions governing livestock auctions, printed in your catalogue and such the vendor's decision will be final.



# After Today – Our Guarantee – Your Obligations

## Your Obligations

Our guarantee is not a replacement for good management. It is aimed at appropriately covering the performance of the bull where the cows are diligently managed to recognised industry standards including vaccination for reproductive diseases. The bull owner has a duty to observe joining, monitor late cycling, and communicate any problems with the vendor as soon as possible, to resolve problems.

We outline below a number of factors you may wish to consider in the management of fertility in your investment in Gyranda sires, because like any investment bulls should be looked after to perform to their maximum, to improve the productivity of your herd.

### Treatments: 5 in 1, 3 Germ Blood, Vibriosis, Botulism.

- All bulls have been vaccinated with 5 in 1, 3 germ blood, Botulism (Long Acting) and Vibriosis.
- An annual booster is recommended for Botulism and Vibriosis and will be due in June 2022.
- If a bull suffers extreme stress, it can take 70 days before normal sperm is delivered again.
- Whilst these bulls have been vet checked with a positive semen test, it is a known fact that if management changes, bull fertility levels can change. Some changes that can cause stress include: mixing with new and particularly older bulls, a change of diet, transport, different stock handling techniques and personnel, exposure to new diseases and a different environment and temperature.
- Allow your bull to acclimatize before mating, and avoid mixing different age bulls. Their ability to cope will depend largely on temperament, genotype and body condition.
- Bulls, like any high performance athletes, do benefit from an “off-season”. If at all possible, spell the bulls after mating to let them re-gain body weight and ultimately health. You may be surprised with the extra years and fertility you can obtain from your bulls.





## July 2021 Santa Gertrudis GROUP BREEDPLAN - Percentile Bands for all 2019 born animals

Use this table as a guide to compare individual animals with the current genetic level of the breed

	Birth			Growth				Fert				Carcase				Extra			Indexes		
	GL	Bwt	200	400	600	Mwt	Milk	SS	DC	kg	days	kg	sq.cm	Rib	Rump	RBV	IMF	FT	PNS	DOM	EXP
	days		kg	kg	cm	cm	days	mm	%	secs	%	%	secs	%	\$						
High 1%	-3.9	-1.9	+25	+40	+54	+73	+6	+3.1	-13.1	+24	+4.9	+2.3	+2.5	+1.8	+0.8	+0.8	+0.41	+8	+\$34	+\$48	
High 5%	-2.1	-1	+21	+33	+45	+58	+4	+2.4	-9.5	+20	+4.1	+1.6	+1.6	+1.4	+0.5	+0.25	+5.6	+\$29	+\$39		
High 10%	-1.5	-0.5	+19	+29	+40	+52	+3	+2.1	-7.6	+18	+3.6	+1.3	+1.1	+1.2	+0.4	+0.19	+4.2	+\$27	+\$36		
High 20%	-1	+0.2	+16	+25	+34	+43	+2	+1.7	-5.2	+15	+3.1	+0.9	+0.7	+1	+0.3	+0.13	+2.5	+\$23	+\$31		
High 30%	-0.7	+0.7	+14	+22	+30	+38	+1	+1.4	-3.5	+13	+2.7	+0.6	+0.4	+0.9	+0.2	+0.09	+1.4	+\$21	+\$27		
High 40%	-0.6	+1.1	+13	+20	+27	+33	+1	+1.2	-2.3	+12	+2.4	+0.4	+0.2	+0.8	+0.1	+0.07	+0.8	+\$19	+\$24		
50%	-0.4	+1.4	+11	+18	+24	+29	0	+1	-1.3	+10	+2.1	+0.3	0	+0.7	+0.1	+0.04	+0.2	+\$17	+\$21		
Low 40%	-0.3	+1.7	+10	+15	+21	+25	0	+0.8	-0.2	+9	+1.8	+0.1	-0.2	+0.6	0	+0.02	-0.3	+\$15	+\$18		
Low 30%	-0.2	+1.9	+8	+13	+18	+21	-1	+0.6	+0.8	+7	+1.5	0	-0.4	+0.5	-0.1	0	-0.8	+\$13	+\$16		
Low 20%	0	+2.3	+6	+10	+15	+16	-2	+0.3	+2	+5	+1.2	-0.2	-0.7	+0.4	-0.1	-0.03	-1.4	+\$11	+\$12		
Low 10%	+0.4	+2.8	+2	+5	+8	+8	-3	-0.1	+3.6	+1	+0.7	-0.6	-1.1	+0.2	-0.2	-0.07	-2.2	+\$6	+\$7		
Low 5%	+0.7	+3.4	-1	+1	+4	+3	-4	-0.9	+5.1	-2	+0.4	-0.8	-1.5	-0.1	-0.3	-0.11	-3	+\$3	+\$3		
Low 1%	+1.8	+4.5	-6	-4	-2	-6	-6	-1.4	+7.9	-6	-0.6	-1.4	-2.2	-0.4	-0.5	-0.2	-5.5	-\$1	-\$2		

# Group BreedPLAN EBVs – How to use them

## NOTES ON GROUP BREEDPLAN EBVS

BREEDPLAN is a genetic evaluation system for beef cattle that uses all pedigree and performance information known about an animal and its relatives to calculate Estimated Breeding Values (EBVs). EBVs are the best estimate of the genetic merit of an animal for each trait measured. EBVs are free from environmental influences that play a significant part in the observed performance of an animal. Units of measurement for EBVs depend on the trait; for example, growth traits are in kilograms and fat depth in millimeters.

The GROUP analysis for Santa Gertrudis BREEDPLAN is processed by ABRI (Agricultural Business Research Institute) from the integrated pedigree/performance database of the Santa Gertrudis Breeder's (Australia) Association.

NB: GROUP BREEDPLAN EBVs can be compared with animals in other Santa Gertrudis Herds but not with animals in other breeds. It is important when assessing GROUP EBVs of a particular animal, to compare them with the average of the breed. The average of 2017 drop calves is used as the measurement of the current genetic level of the breed.

**Average EBVs for the 2019 born animals analysed in the July 2021 Santa Gertrudis GROUP BREEDPLAN**

200D	400D	600D	MWT	MILK	SS	DTC	
+11	+18	+24	+29	0	+1	-1.3	
EMA	RIB	RUMP	IMF	FLIGHT TIME	PNS	DOMESTIC	EXPORT
+2.1	+0.3	0	+0.1	+0.04	+0.2	+\$ 17	+\$ 21

## HOW TO USE EBVs:

The first step is to decide what characteristics are important in your breeding program, and then select EBVs which fit the bill for your herd. For example, if you are selling 14 month old steers and the last draft you sold could have been heavier without prejudicing your market, then you should look for a bull with a high EBV for 400 day weight.

## ARE BULLS WITH BELOW AVERAGE EBVs WORTH BUYING?

Yes. They can be. EBVs are a guide to help in selection – not the only selection criteria you should use.

## 200 DAY MILK and GROWTH:

The vealer producer should place emphasis on the 200 day growth and milk genes. If the bull is to be used as a terminal sire, growth is most important. If the bull is to be used to breed replacement heifers and superior milking and mothering ability is required then pay close attention to the EBVs for milk (kg). The estimate in kg milk is not the yield of milk of the dam, but the growth of the calf due to more milk and better mothering in the dam.

## 400 DAY WEIGHT:

400 Day Weight EBVs are a measure of the animal's ability to grow to 400 days of age (can be measured from 301 – 500 days). It should be used by producers who wish to turn off yearling cattle.

## 600 DAY WEIGHT:

600 Day Weight EBVs are computed for growth to 600 days of age (can be measured at 501 – 900 days of age). In production systems for heavy steers, this is important. It is the best prediction of an animal's ability to grow on to maturity.

# Group BreedPLAN EBVs – How to use them

## **SCROTAL SIZE:**

Scrotal Size EBV is an indicator of male fertility in regards to semen quality and quantity. Higher (positive) EBVs indicate higher fertility. There is also a small negative correlation with age at puberty of female progeny.

## **DAYS TO CALVING:**

Days to Calving EBV is an indicator of female fertility based on the time between a cow's first exposure to a bull and when she subsequently calves. Cows that calve late in the season or fail to calve are penalised. This is more useful as a sire trait. Lower, or more negative, Days to Calving EBVs are generally more favourable. For example, a bull with a Days to Calving EBV of -5 days would be expected to produce daughters that conceive earlier in the joining period than the daughters of a bull with a Days to Calving EBV of +5 days.

## **CARCASE EBVS:**

Carcase EBVs are currently calculated from scanning information on live animals. Fat scans at rib and rump are used to calculate fat depth EBVs. Scanned eye muscle area at 12/13 rib section is used to calculate EMA (eye muscle area) EBV. Scanned fat, scanned EMA and liveweight are used to estimate Meat Yield EBVs.

## **FAT DEPTH:**

Usually expressed as a single EBV for Rump Fat (P8) in mm and adjusted to 450 days of age. An EBV above the GROUP average indicates animals which will breed progeny fatter or fattening earlier than the Santa Gertrudis average. An EBV below the GROUP average will indicate animals that tend to produce progeny leaner or fattening later than the Santa Gertrudis average. While emphasis in the industry is towards the production of lean carcasses, it must be remembered that selection for extreme leanness may result in breeding females with reduced drought tolerance and lower fertility in harsh environments.

## **EYE MUSCLE AREA (EMA):**

Expressed in square cm, predicts the size of eye muscle in progeny at 450 days of age. The EMA EBV is adjusted for age. Therefore high EBV values are generally derived more from high growth rate potential (i.e. total weight), rather than from heavy muscling. Because of a positive association with liveweight, EMA EBV is seen more as a predictor of Total Yield than an indicator of muscling.

## **ESTIMATED TOTAL MEAT YIELD (ETMY):**

Predicts the total meat yield produced by progeny at 450 days of age. Prediction of total meat yield is based on liveweight and scan EMA. Total meat yield has a high positive correlation with 450 day weight EBV. Initially this EBV should be used to fine tune selection decisions, i.e. for animals of desired growth and fertility, select the highest ETMY EBV.

## **FLIGHT TIME EBVS:**

Flight Time EBV's are estimates of genetic differences between animals in temperament. Flight Time EBV's are expressed as differences in the number of seconds taken for an animal to travel approximately 2.0 metres after leaving the crush. Higher (i.e. Longer) Flight Time EBV's are more favourable. That is, higher EBVs indicate a longer time taken to exit the crush and hence better temperament. For example, a bull with an EBV of +0.80 would be expected to on average produce progeny that took 0.7 of a second longer to exit the crush than a bull with an EBV of -0.60.

## **Percent Normal Sperm:**

PNS is a new EBV that predicts the likelihood of your bull's sons having higher or lower semen morphology. This figure is really only relevant to those producing bulls, but research is continuing into the correlation of this figure with female fertility traits, to which it is generally assumed they are closely correlated.

## Group BreedPLAN EBVs – How to use them

### SELECTION INDEXES:

There are currently two different selection indexes calculated for Australian Santa Gertrudis animals. These are:

- Domestic Production Index
- Export Production Index

Each selection index describes a different production/market scenario and relates to a typical, self replacing Santa Gertrudis herd targeting the following specifications. Domestic Production Index - Estimates the genetic differences between animals in net profitability per cow joined for an example self replacing commercial herd (run in a temperate environment) producing steers for the domestic trade. This Index assumes that the steer progeny are pasture grown and finished and marketed at 500 kg live weight (280 kg HSCW and 12 mm P8 fat depth) at 16 months of age. Daughters are retained for breeding.

### EXPORT PRODUCTION INDEX:

Estimates the genetic differences between animals in net profitability per cow joined for an example commercial herd (run in a sub-tropical environment) producing steers for the export trade. This Index assumes that the steer progeny are pasture grown and finished and are marketed at 620 kg live weight (340 kg HSCW and 15 mm P8 fat depth) at 28 months of age. Daughters are retained for breeding. All selection indexes are reported as an EBV, in units of relative earning capacity (\$) for a given production/market scenario. They reflect both the short term profit generated by a sire through the sale of his progeny, and the longer term profit generated by his daughters in a self replacing cow herd. All selection index values have been derived using Breed Object technology.

### ACCURACY:

An accuracy on EBVs gives an indication of the amount of information that has been used in the calculation of that EBV. The higher the accuracy, the less the animal's EBVs are likely to change as more information is analysed for that animal and its relatives.

## Homozygous Poll (PP) Gene Test



Most of the poll bulls in this catalogue have been genetically tested for the homozygous poll gene. Those that are genetically PP with a double poll gene will deliver more poll calves than a normal (heterozygous) poll bull and substantially more than a horned bull. Just how many poll calves are born depends on your cows but it is not uncommon for a PP bull to father all poll calves.

## Suitable for Heifers



At Gylanda we have been weighing first calf heifers and closely monitoring their performance for six years. This has allowed us to build up a good understanding of what characteristics dictate that a bull is suitable to put across heifers. Especially those higher growth bulls that we may have traditionally steered away from. It is not a guarantee, but useful information utilising all of the available data (sire, dam, their actual birthweight) available to us.

**CREE NIAGARA N040 (PS)**

CRE17MN040 DOB 05/10/2016



WIGHTFIELDS DOWNPOUR G21 (P)

**SIRE: ROSEVALE KING K88**

ROSEVALE JADE D175

TOP GUN 244

**DAM: CREE F083 (AI)**

CREE Z209

**NOTES:**

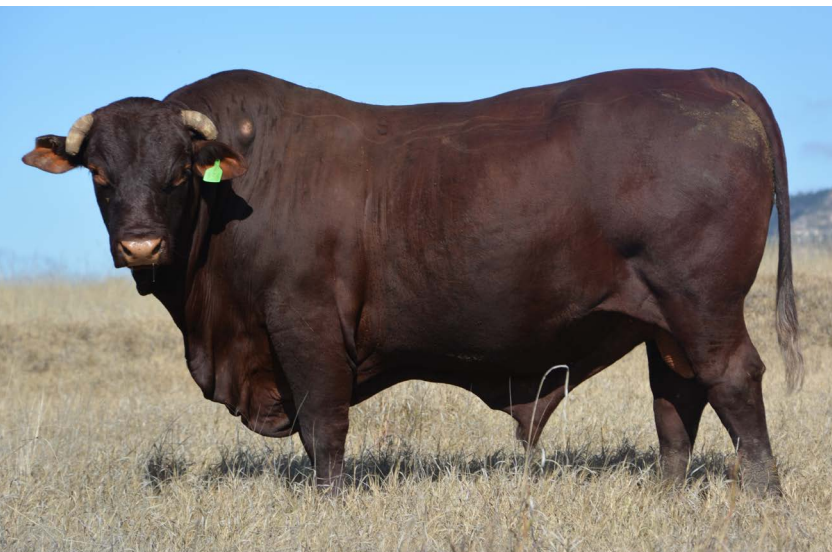
Purchased at the 2018 Cree sale for \$22,000 he was my pick of the first draft of Rosevale King K88 calves – himself the highest priced horned bull in Santa Gertrudis. Niagara brings power from his sire line, but an outcross on his Dam side which has delivered some sterling results for Cree. He stands with EBV data for Growth in the top 1-5% of the breed, combined with very good fertility data & plenty of muscle. This first draft of Niagara calves provide an exciting glimpse into the next generation of ever improving growth, fertility & carcass here at Gyranda.

**SIRE OF LOTS:****4, 56, 71**

GROWTH	200D	+25	83%
	400D	+31	81%
	600D	+47	82%
	MWT	+62	75%
	MILK	+5	56%
FERTILITY	SS	+2.6	77%
	DTC	-4.1	59%
CARCASS	EMA	+3.1	63%
	RIB	-0.4	66%
	RUMP	-1.3	65%
	RBV	+1.0	54%
	IMF	-0.1	67%
Flight Time	PNS	-1.5	55%
	Flight Time	+0.07	81%
\$ INDEX	DOM	+\$ 27	
	EXP	+\$ 40	

## GYRANDA FOR REAL F136 (PS)

287349 DOB 18/08/2009



EIDSVOLD STATION V162 (PS)

**SIRE: EIDSVOLD STATION A166 (PS)**

EIDSVOLD STATION U85

GYRANDA CRACKERJACK V532

**DAM: GYRANDA CALAMITY C113**

GYRANDA Z537

### NOTES:

A deep bodied & very quiet sire with a lovely coat, F136 served us well for a long time delivering 232 calves over a seven year career. His last season was obviously a good one with 12 bulls in this sale draft. His Eidsvold Station A166 sire line delivered plenty of constitution & fertility whilst on his Dam side the indomitable Crackerjack V532 gives eye appeal & performance. As an older sire the growth is not what we are seeing today but his birthweight EBV is smaller than average & with his smooth lines he makes a good heifer bull. Fat data & temperament cannot be faulted.

**SIRE OF LOTS:**

**24, 35, 36, 37, 48, 54, 57, 62, 67, 75, 92, 94**

GROWTH	200D	+8	95%
	400D	+15	95%
	600D	+20	95%
	MWT	+37	90%
	MILK	-7	84%
FERTILITY	SS	+0.8	94%
	DTC	-2.1	87%
CARCASS	EMA	+1.5	80%
	RIB	+1.1	84%
	RUMP	+1.3	83%
	RBV	+0.3	72%
	IMF	+0.1	81%
\$ INDEX	PNS	-0.7	85%
	Flight Time	+0.32	95%
\$ INDEX	DOM	+\$ 15	
	EXP	+\$ 21	

**GYRANDA LIGNUM L164 (PS)**

GYR15ML164 DOB 03/09/2014



SUJO DASHING (PS)

**SIRE: ROWANLEA DUNTRON D24 (PS)**

ROWANLEA XCUSE X105

EIDSVOLD STATION B188

**DAM: GYRANDA E177**

GYRANDA C167

**NOTES:**

By Rowanlea Duntroon D24 and with Gyranda Crackerjack on his Dam side this bull has an impeccable fertility pedigree – and the data to back it up. What catches your eye though is the growth and power of his progeny. Another great combination of growth and fertility.

**SIRE OF LOTS:****10, 50, 59, 81**

GROWTH	200D	+12	9%
	400D	+26	88%
	600D	+37	90%
	MWT	+44	81%
	MILK	+2	66%
FERTILITY	SS	+3.1	87%
	DTC	-9.1	70%
CARCASS	EMA	+1.8	72%
	RIB	-0.2	77%
	RUMP	-0.9	76%
	RBV	+1.0	63%
	IMF	-0.2	76%
\$ INDEX	PNS	-3.3	59%
	Flight Time	+0.58	90%
\$ INDEX	DOM	+\$ 30	
	EXP	+\$ 44	

## GYRANDA MOBY DICK M224 (PP)

GYR16MM224 DOB 05/08/2015



ROSEVALE MATLOCK W20 (AI)(P)

**SIRE: DANGARFIELD PENROSE (P)**

DANGARFIELD 7064

ROSEVALE GUMPER X546 (P)

**DAM: GYRANDA F249 (P)**

GYRANDA V285



### NOTES:

A young carcass sire really hitting his straps. Moby Dick is an early maturing, medium framed bull with both Eye muscle and Fat EBVs in the top 1% of the breed. A generation ago this sort of combination was simply unknown and, given that his growth data is far from shabby, a possible game changer for the breed. A Dangarfield Penrose calf, tight in the sheath and dark in the coat. We have kept another of his sons this year.

**SIRE OF LOTS:**

**21, 32, 53, 73, 87, 90, 95**

GROWTH	200D	+19	88%
	400D	+19	87%
	600D	+31	88%
	MWT	+25	80%
	MILK	-3	62%
FERTILITY	SS	-0.1	84%
	DTC	+4.2	67%
CARCASS	EMA	+4.7	70%
	RIB	+2.3	74%
	RUMP	+3.0	73%
	RBV	+0.1	61%
	IMF	0.0	73%
FERTILITY	PNS	+4.9	59%
	Flight Time	+0.29	90%
\$ INDEX	DOM	+\$ 13	
	EXP	+\$ 13	



**GYRANDA MONTO M272 (P)**

GYR16MM272 DOB 10/08/2015



RAYTEK DEMOCRAT (P)

**SIRE: ROSEVALE DEMOCRAT G268 (P)**

ROSEVALE HONEY Y165

GYRANDA CRACKERJACK V532

**DAM: GYRANDA D549**

MARSTON 1123 (P)

**NOTES:**

A prolific young sire with a slick, dark coat, very tidy sheath and good muscle definition. He has been joined to the Elite cows for some years so it is little wonder that 15 of his sons made the sale – but that could also have something to do with the fact he sired 66 calves in 2018 (after 41 in his first year). Monto's progeny have measured up with excellent carcass characteristics – especially EMA that is easy to see throughout his draft of sons.

**SIRE OF LOTS:****3, 12, 17, 18, 19, 22, 27, 38, 49, 58, 60, 69, 74, 77**

GROWTH	200D	+18	90%
	400D	+12	90%
	600D	+21	91%
	MWT	+34	81%
	MILK	-4	65%
FERTILITY	SS	+1.1	87%
	DTC	+2.1	66%
CARCASS	EMA	+4.4	73%
	RIB	+1.2	77%
	RUMP	+1.0	76%
	RBV	+1.1	63%
	IMF	-0.4	77%
PNS	PNS	-2.8	56%
	Flight Time	-0.12	92%
\$ INDEX	DOM	+\$ 14	
	EXP	+\$ 16	

## GYRANDA MULGA BILL M482 (P)

GYR16MM482 DOB 09/09/2015



ROSEVALE NODDY A18 (P)

**SIRE: GYRANDA FRANKLIN F238 (P)**

GYRANDA C361 (P)

270 MSMU M

**DAM: GYRANDA Z131**

### NOTES:

This is a young sire that impresses us more with each calf on the ground. With their slick coat, tidy underline & deep body, both sons & daughters have a tremendously high rate of classification. A grandson of the famous Tyndale Noddy you can see where he gets the coat, frame & style from. It is his mother however – Gyranda Z131- that provides the horsepower. She weaned eleven calves in eleven years, including another Gyranda Sire Garfield G302 (P) (the highest fat sire in the breed today). Z131 carried an IMF EBV of +1.2 & fats of +3.8 & +3.7 putting her at the very top of the breed. A low birthweight sire with smooth lines, his sons should be good to use across heifers – with the added bonus of having high growth. Three of his sons in the Elite group at the lead of the sale bear testament to the consistency of his breeding.

**SIRE OF LOTS:**

**5, 6, 8, 13, 15, 29, 44, 55, 72, 78, 84**

GROWTH	200D	+12	88%
	400D	+19	87%
	600D	+30	88%
	MWT	+43	79%
	MILK	-1	58%
FERTILITY	SS	+2.3	86%
	DTC	-2.6	65%
CARCASS	EMA	+0.3	68%
	RIB	+0.9	74%
	RUMP	+0.6	73%
	RBV	-0.7	59%
	IMF	+0.6	73%
Flight Time	PNS	+2.9	60%
	Flight Time	+0.27	91%
\$ INDEX	DOM	+\$ 10	
	EXP	+\$ 21	

**ROWANLEA KLUGER K32 (P)**

ROW14MK32 DOB 14/09/2013



ROSEVALE BATTALION B150 (P)

**SIRE: ROSEVALE BATTALION E622 (P)**

ROSEVALE AFRA B37 (P)

ROWANLEA ATOMIC A02 (P)

**DAM: ROWANLEA E31**

ROWANLEA Y73+6

**NOTES:**

As consistent as the day is long, Kluger continues to deliver quiet calves with massive growth... and plenty of them. His 'R' drop was 68 calves... no wonder he has 16 in the sale! Clean coated with growth data that places him in the top five or six sires in Santa Gertrudis this bull also has a short gestation length and average birthweight EBVs.

**SIRE OF LOTS:****9, 16, 23, 25, 26, 39, 40, 45, 47, 52, 64, 66, 68, 83, 86, 93**

GROWTH	200D	+24	93%
	400D	+39	93%
	600D	+57	94%
	MWT	+84	84%
	MILK	0	75%
FERTILITY	SS	+2.3	92%
	DTC	+1.9	77%
CARCASS	EMA	+2.7	76%
	RIB	-1.5	81%
	RUMP	-2.2	80%
	RBV	+0.7	68%
	IMF	+0.1	80%
\$ INDEX	PNS	+7.6	63%
	Flight Time	+0.33	93%
\$ INDEX	DOM	+\$ 25	
	EXP	+\$ 35	

## Sire Reference

### FIRST RELEASE SIRE

# WIGHTFIELDS NESS N65 (PP)

WIG17MN65 DOB 14/10/2016



WIGHTFIELDS DOWNPOUR G21 (P)

**SIRE: ROSEVALE DOWNPOUR K6 (PS)**

ROSEVALE GEMMA G155 (P)

EIDSVOLD STATION C196 (PS)

**DAM: WIGHTFIELDS LISSIE F130**

WIGHTFIELDS LISSIE D36



#### NOTES:

A first release sire with exceptional growth, fertility and carcass – and homozygous poll to boot. This young bull is a little lighter in colour than others but his clean coat, good sheath and great muscle make for sons that have the hummer look... with the horsepower.

SIRE OF LOTS:

**14, 65, 76, 80**

GROWTH	200D	+18	81%
	400D	+32	82%
	600D	+48	83%
	MWT	+55	74%
	MILK	-1	44%
FERTILITY	SS	+2.6	81%
	DTC	-8.6	57%
CARCASS	EMA	+3.6	64%
	RIB	+0.7	70%
	RUMP	+0.5	69%
	RBV	+0.8	56%
	IMF	+0.1	71%
\$ INDEX	PNS	-	-
	Flight Time	-0.02	68%
\$ INDEX	DOM	+\$ 34	
	EXP	+\$ 50	



A NUTRIEN AG SOLUTIONS PARTNER

## Big Enough To Count, Small Enough To Care

- 21 Branches
- Auctions & Private Sales • Feedlot Services
- Rural & Residential Property Sales

### Our Stud Stock Team

Harvey Weyman-Jones	0414 941 788
Mark Duthie	0448 016 950
Peter Brazier	0407 525 983
Georgie Connor	0428 347 550
Josh Heck	0409 732 676
Tony Dwyer	0427 589 437

**Nutrien  
Harcourts**

**GDL**  
A NUTRIEN AG SOLUTIONS PARTNER



[www.facebook.com/GDL1997](http://www.facebook.com/GDL1997)

[gdlrural.com.au](http://gdlrural.com.au)



# GYRANDA RAIDER R122 (PS) (AI)

'S' BULL

GYR20MR122

4/09/2019 (22 mths)



LOT 1.

ROSEVALE BANDITO B8

**SIRE: ROSEVALE JETHRO J208 (AI) (PS)**

ROSEVALE NANCY B161 (P)

TRIPLE S J14 (PS)

**DAM: GYRANDA M311 (P)**

GYRANDA G527



GROWTH	200D	+21	70%
	400D	+31	69%
	600D	+52	71%
	MWT	+50	65%
	MILK	+2	55%
FERTILITY	SS	+2.2	70%
	DTC	-7.1	57%
CARCASE	EMA	+4.3	55%
	RIB	+0.8	62%
	RUMP	+0.6	61%
	RBV	+1.3	50%
	IMF	+0.2	60%
Flight Time	PNS	-0.9	47%
		+0.15	69%
\$ INDEX	DOM	+34	
	EXP	+50	

**Notes:** A dynamic all rounder. This A.I. son of Rosevale Jethro is a medium framed bull absolutely bulging with carcase. A massive hindquarter, thick behind the shoulders and an excellent sheath meshed with great fertility data. It is difficult to find any weakness in his data. Both growth and fertility in the top 5% of the breed and carcase all in the best 20% of recorded Santa animals. Dam Gyranda M311 (P) calved at two and has had three calves in four years. Her dam G527 has just weaned her eighth calf in nine years.

Dam: C.I. 531 days

Morphology: 72%

Wt \_\_\_\_\_

Sc \_\_\_\_\_

\$



# GYRANDA RYDER R544 (P)

'S' BULL

GYR20MR544

18/09/2019 (22 mths)



LOT 2.

ROSEVALE BANDITO B8

**SIRE: ROSEVALE JETHRO J208 (AI) (PS)**

ROSEVALE NANCY B161 (P)

GYRANDA CESAR C422 (PS)

**DAM: GYRANDA L201 (P)**

GYRANDA E115



**Notes:** A bull with real presence. A clean coat, tidy sheath and lovely loose skin. This A.I. son of Rosevale Jethro offers a low birthweight, high growth option and it is difficult to find any weakness in the data. Fertility and IMF EBVs are in the top 1% of the breed. Growth, fat and EMA are not far from that same level. His Dam L201 (P) calved at two and has weaned four calves in five years.

Dam: C.I. 364 days

Morphology: 88%

Wt \_\_\_\_\_

Sc \_\_\_\_\_

GROWTH	200D	+12	69%
	400D	+30	69%
	600D	+38	71%
	MWT	+42	67%
	MILK	+1	56%
FERTILITY	SS	+2.7	71%
	DTC	-11.3	59%
CARCASE	EMA	+3	57%
	RIB	+1	63%
	RUMP	+0.9	62%
	RBV	+0.3	52%
	IMF	+0.6	61%
\$ INDEX	PNS	+5.4	52%
	Flight Time	+0.11	69%
\$ INDEX	DOM	+33	
	EXP	+47	

\$



# GYRANDA RAFIKI R136

'S' BULL

GYR20MR136

9/09/2019 (22 mths)



**LOT 3.**

ROSEVALE DEMOCRAT G268 (P)

**SIRE: GYRANDA MONTO M272 (P)**

GYRANDA D549

GYRANDA D176

**DAM: GYRANDA L715 (PS)**

GYRANDA X485

**Notes:** An extraordinary young sire prospect with the slick dark coat, tidy sheath and muscle definition that make him a 'must have' for anyone looking to make a real impact on the breed. His EBV data reflects perfectly what you see: Extraordinary growth and muscle; POWER from nose to tail. Interestingly his Fertility EBV's are not great but records tell a different story on his dam line. His dam - Gyranda L715 calved at two and maintains a perfect record, weaning five to date. Her dam - Gyranda X485 also had a perfect record, weaning 13 calves before finally coming in empty.

**Dam:** C.I. 352 days

**Morphology:** 81%

Wt \_\_\_\_\_

Sc \_\_\_\_\_

GROWTH	200D	+25	69%
	400D	+26	67%
	600D	+41	69%
	MWT	+61	62%
	MILK	+1	52%
FERTILITY	SS	+1.5	67%
	DTC	+2.9	52%
CARCASS	EMA	+4.5	52%
	RIB	-0.4	57%
	RUMP	-0.8	56%
	RBV	+1.3	45%
	IMF	-0.1	55%
\$ INDEX	PNS	-1.6	39%
	Flight Time	+0.04	68%
\$ INDEX	DOM	+21	
	EXP	+26	

\$





# GYRANDA ROSETTA R526

'S' BULL

GYR20MR526

2/09/2019 (22 mths)



**LOT 4.**

ROSEVALE KING K88

**SIRE: CREE NIAGARA N040 (PS)**

CREE F083

GYRANDA C688 (P)

**DAM: GYRANDA G627**

GYRANDA E211

**Notes:** A slick coated bull with a great topline and playful nature. Exceptional combination of growth and fertility data. Dam - Gyranda G627 - had seven calves in eight years including a \$14,000 bull sold to Stewart and Anna Weir.

GROWTH	200D	+16	66%
	400D	+26	67%
	600D	+39	69%
	MWT	+47	62%
	MILK	+2	46%
FERTILITY	SS	+2.4	67%
	DTC	-6.7	49%
CARCASE	EMA	+2.1	52%
	RIB	-0.5	59%
	RUMP	-1.4	58%
	RBV	+0.9	46%
	IMF	+0	56%
Flight Time	PNS	+0.3	37%
	Flight Time	+0.01	60%
\$ INDEX	DOM	+26	
	EXP	+40	

Dam: C.I. 418 days

Morphology: 85%

Wt \_\_\_\_\_

Sc \_\_\_\_\_

\$



# GYRANDA RANGO R382 (PS)

'S' BULL

GYR20MR382

26/08/2019 (23 mths)



LOT 5.

GYRANDA FRANKLIN F238 (P)

**SIRE: GYRANDA MULGA BILL M482 (P)**

GYRANDA Z131

EIDSVOLD STATION ESX476

**DAM: GYRANDA G211**

GYRANDA B251



GROWTH	200D	+17	66%
	400D	+28	66%
	600D	+40	67%
	MWT	+55	60%
	MILK	+2	49%
FERTILITY	SS	+3.2	67%
	DTC	-7.1	52%
CARCASE	EMA	+1.6	51%
	RIB	+0.9	57%
	RUMP	+0.3	56%
	RBV	+0	45%
	IMF	+0.5	54%
\$ INDEX	PNS	+3	43%
	Flight Time	+0.07	68%
\$ INDEX	DOM	+24	
	EXP	+38	

**Notes:** Rango is a tall bull with a genuine Sirey outlook and depth throughout. He was broken in and shown at the Warwick junior show, so carries a little more weight than his contemporaries, but his EBV data reassures you that genetically he carries plenty of punch. Growth, Fertility and IMF all in the top echelon of the breed. It should also be noted that sire - Gyranda Mulga Bill M482 - is a low birthweight bull so this high growth bull with smooth shoulders should be safe to use over heifers. Dam - Gyranda G211 - calved at two and has weaned seven in nine years.

Dam: C.I. 492 days

Morphology: 82%

Wt \_\_\_\_\_

Sc \_\_\_\_\_

\$



# GYRANDA ROB ROY R402 (PS)

'S' BULL

GYR20MR402

26/08/2019 (23 mths)



**LOT 6.**

GYRANDA FRANKLIN F238 (P)

**SIRE: GYRANDA MULGA BILL M482 (P)**

GYRANDA Z131

ROSEVALE NODDY A18 (P)

**DAM: GYRANDA J275**

GYRANDA E501



**Notes:** A very stylish young bull. Long and deep in the flank. He oozes breed character, Growth in the top 10% of the breed, but out of low birthweight sire Mulga Bill M482 and carrying marbling in the top 5% of the breed. Dam J275 calved at two and has weaned six from seven including two bulls sold to Jim Scott.

GROWTH	200D	+17	67%
	400D	+25	67%
	600D	+39	68%
	MWT	+65	64%
	MILK	+1	53%
FERTILITY	SS	+2.1	62%
	DTC	-4.7	55%
CARCASE	EMA	+0.4	54%
	RIB	+0.7	59%
	RUMP	+0.4	57%
	RBV	-0.4	47%
	IMF	+0.5	56%
	PNS	+4.2	44%
	Flight Time	+0.13	66%
\$ INDEX	DOM	+16	
	EXP	+32	

Dam: C.I. 433 days

Morphology: 61%

Wt \_\_\_\_\_

Sc \_\_\_\_\_

\$



# GYRANDA REMINGTON R546

'S' BULL

GYR20MR546

11/09/2019 (22 mths)



**LOT 7.**

**SIRE: ROSEVALE MAJESTIC M176 (P)**

ROSEVALE ESTELLE J331 (P)

GYRANDA ASSASSIN A406

**DAM: GYRANDA J391**

GYRANDA B763

**Notes:** A lovely soft bull with a slick coat, good sheath and tremendous topline. An A.I. calf to Rosevale Majestic M176 (P) this bull carries the strong growth EBV's of his sire - alongside excellent temperament, fat and fertility data. His Dam - Gyranda J391 - calved at two and has weaned 7/7, including a \$7000 bull calf sold to Arrabury last year. Her Dam - B763 weaned 11/11.

<b>GROWTH</b>	200D	+21	68%
	400D	+34	68%
	600D	+51	70%
	MWT	+63	64%
	MILK	+0	50%
<b>FERTILITY</b>	SS	+0.7	70%
	DTC	-6	53%
<b>CARCASE</b>	EMA	+3.3	53%
	RIB	+1	60%
	RUMP	+1.2	59%
	RBV	+0.2	48%
	IMF	+0.3	58%
<b>\$ INDEX</b>	PNS	-1	47%
	Flight Time	+0.25	69%
<b>\$ INDEX</b>	DOM	+29	
	EXP	+44	

Dam: C.I. 370 days

Morphology: 61%

Wt \_\_\_\_\_

Sc \_\_\_\_\_

\$



# GYRANDA RINGBARK R426 (P)

'S' BULL

GYR20MR426

11/09/2019 (22 mths)



**LOT 8.**

GYRANDA FRANKLIN F238 (P)

**SIRE: GYRANDA MULGA BILL M482 (P)**

GYRANDA Z131

GREENUP GIZZA G218 (P)

**DAM: GYRANDA K787 (P)**

GYRANDA D295



**Notes:** An Eye Catching poll bull oozing sire appeal. Long and deep with a spring of rib and hindquarter you can but admire. Another high growth bull out of low birthweight sire Mulga Bill M482 (P). Dam Gyranda K787 (P) calved at two and has weaned five calves in six years. Her last bull calf being sold to Garth Christianson for \$12,000.

GROWTH	200D	+13	66%
	400D	+27	67%
	600D	<b>+39</b>	<b>69%</b>
	MWT	+48	62%
	MILK	-2	49%
FERTILITY	SS	<b>+2.8</b>	<b>69%</b>
	DTC	-5.8	51%
CARCASE	EMA	+2.6	51%
	RIB	+0.2	59%
	RUMP	-0.2	58%
	RBV	+0.6	46%
	IMF	+0.3	57%
\$ INDEX	PNS	+1	40%
	Flight Time	+0.1	68%
\$ INDEX	DOM	<b>+27</b>	
	EXP	<b>+39</b>	

Dam: C.I. 450 days

Morphology: 84%

Wt \_\_\_\_\_

Sc \_\_\_\_\_

\$



# GYRANDA ROLLESTON R512 (PS)

'S' BULL

GYR20MR512

8/09/2019 (22 mths)



**LOT 9.**

ROSEVALE BATTALLION E622 (P)

**SIRE: ROWANLEA KLUGER K32 (P)**

ROWANLEA E31 (P)

GYRANDA C834

**DAM: GYRANDA G195**

GYRANDA C153

**Notes:** Sire appeal is writ large all over this bull. A dark coat; breed character; long and deep in the flank. Moreover he has data that fully backs up what you see delivering an animal with an exceptional combination of growth, fertility, temperament and IMF. Dam G195 calved at two and has had eight calves in nine years including a \$7500 bull sold to John Knights.

GROWTH	200D	+12	67%
	400D	+25	67%
	600D	+41	69%
	MWT	+72	63%
	MILK	+1	55%
FERTILITY	SS	+3	69%
	DTC	-11	56%
CARCASE	EMA	+0.9	54%
	RIB	-0.5	60%
	RUMP	-1.6	59%
	RBV	+0.9	49%
	IMF	+0.3	58%
\$ INDEX	PNS	+2.8	42%
	Flight Time	+0.23	64%
\$ INDEX	DOM	+28	
	EXP	+51	

Dam: C.I. 413 days

Morphology: 90%

Wt \_\_\_\_\_

Sc \_\_\_\_\_

\$



# GYRANDA ROPER RIVER R636 (P)

'S' BULL

GYR20MR636

9/11/2019 (20 mths)



**LOT 10.**

ROWANLEA DUNTRON D24 (PS)

**SIRE: GYRANDA LIGNUM L164 (P)**

GYRANDA E177

YARRABEE BLITZ 58 (P)

**DAM: GYRANDA N311 (P)**

GYRANDA K393

**Notes:** A beautifully proportioned young bull with a clean coat, tidy underline and well defined hindquarter. Quiet and carrying exceptional fertility data. Dam - Gyranda N311 (P) calved at two and has weaned three calves in three years. Her Dam K393 has weaned 6/6. Her Dam - Gyranda Y243 weaned 13 calves without blemish and her Dam - L21 weaned 12/12.

Dam: C.I. 400 days

Morphology: 53%

Wt \_\_\_\_\_

Sc \_\_\_\_\_

GROWTH	200D	+10	66%
	400D	+22	67%
	600D	+32	69%
	MWT	+26	62%
	MILK	+3	50%
FERTILITY	SS	+2.7	57%
	DTC	-8.8	52%
CARCASE	EMA	+2.6	53%
	RIB	+0.3	59%
	RUMP	-0.2	59%
	RBV	+1	47%
	IMF	+0	59%
\$ INDEX	PNS	-1.5	36%
	Flight Time	+0.23	67%
\$ INDEX	DOM	+28	
	EXP	+40	

\$



# GYRANDA RASPUTIN R110 (P)

'S' BULL

GYR20MR110

3/09/2019 (22 mths)



LOT 11.

WIGHTFIELDS DOWNPOUR G21 (P)

**SIRE: GYRANDA NEWTON N202 (PP)(AI)**

GYRANDA F349 (P)

GYRANDA ENIGMA E124

**DAM: GYRANDA L409**

GYRANDA F229



**Notes:** Wow! What a package. This slick coated, neat sheathed, poll bull carries explosive growth, massive muscle, great temperament and fat. And all in a medium framed package with fertility data in the to 5% of the breed! A birthweight of 36kg and average BW EBVs indicate that he would be safe to use accross heifers. His Dam - Gyranda L409 - calved at two and has delivered five so far for a perfect record, including a bull sold to Ron Sipple for \$8000 and another bull sold last year to Arrabury for \$8000. This is the first of a line of calves by new sire Gyranda Newton N202. They do not disappoint.

Dam: C.I. 364 days

Morphology: 89%

Wt \_\_\_\_\_

Sc \_\_\_\_\_

GROWTH	200D	+22	71%
	400D	+33	69%
	600D	+45	71%
	MWT	+62	64%
	MILK	-2	49%
FERTILITY	SS	+1.3	69%
	DTC	-10.3	50%
CARCASE	EMA	+6.2	53%
	RIB	+1.4	60%
	RUMP	+1.5	59%
	RBV	+1.3	47%
	IMF	+0.7	58%
\$ INDEX	PNS	+3.3	42%
	Flight Time	+0.24	67%
\$ INDEX	DOM	+40	
	EXP	+56	

\$





# GYRANDA RIVERINA R624

'S' BULL

GYR20MR624

16/10/2019 (21 mths)



**LOT 12.**

ROSEVALE DEMOCRAT G268 (P)

**SIRE: GYRANDA MONTO M272 (P)**

GYRANDA D549

GREENUP GIZZA G218 (P)

**DAM: GYRANDA M237**

GYRANDA E249

**Notes:** A well muscled, dark bull with a good sheath. His data is strong across the board, but exceptionally good for carcase with EMA and Fat both in the top 5% of the breed. Dam Gyranda M237 calved at three and has weaned three calves in three years. Her last bull calf sold to Hamish McClymont for \$8000 last year.

GROWTH	200D	+18	67%
	400D	+24	67%
	600D	+35	69%
	MWT	+25	63%
	MILK	+1	51%
FERTILITY	SS	+2.1	69%
	DTC	-3.9	52%
CARCASE	EMA	+4.5	53%
	RIB	+2.1	60%
	RUMP	+2.1	59%
	RBV	+0.5	48%
	IMF	+0.1	58%
FERTILITY	PNS	-2.8	38%
	Flight Time	-0.07	68%
\$ INDEX	DOM	+25	
	EXP	+31	

Dam: C.I. 383 days

Morphology: 85%

Wt \_\_\_\_\_

Sc \_\_\_\_\_

\$



# GYRANDA R398 (P)

'S' BULL

GYR20MR398

26/08/2019 (23 mths)



LOT 13.

GYRANDA FRANKLIN F238 (P)

**SIRE: GYRANDA MULGA BILL M482 (P)**

GYRANDA Z131

GYRANDA ENIGMA E124

**DAM: GYRANDA L411 (PS)**

GYRANDA G119



**Notes:** A beautiful big, soft poll bull. Deep in the flank, heavy boned with loose skin and a sirey outlook. Exceptional growth data and by low birthweight sire Mulga Bill M482 (P). His Dam - Gyranda L411 (PS) weaned four calves in five years and her last bull calf sold to Donald Joyce for \$11,000.

GROWTH	200D	+20	66%
	400D	+35	67%
	600D	+48	68%
	MWT	+73	62%
	MILK	+1	46%
FERTILITY	SS	+2.2	69%
	DTC	+0.7	50%
CARCASE	EMA	+3.6	51%
	RIB	-0.3	59%
	RUMP	-0.6	58%
	RBV	+0.8	46%
	IMF	+0.3	56%
\$ INDEX	PNS	-0.5	39%
	Flight Time	+0.37	66%
\$ INDEX	DOM	+26	
	EXP	+33	

Dam: C.I. 466 days

Morphology: 85%

Wt \_\_\_\_\_

Sc \_\_\_\_\_

\$



# GYRANDA R380 (PS)

'S' BULL

GYR20MR380

23/09/2019 (22 mths)



**LOT 14.**

ROSEVALE DOWNPOUR K6 (PS)

**SIRE: WIGHTFIELDS NESS N65 (PP)**

WIGHTFIELDS LISSIE F130

GYRANDA D176

**DAM: GYRANDA M637**

GYRANDA F751

**Notes:** A beautifully proportioned big bull with a tidy sheath, massive hindquarter and flat across the topline. By new sire Weightfields Ness N65 (PP) this bull will be one of the heaviest in the draft - and carries the EBV's to back it up. In fact it is difficult to find much weakness in his data at all. Dam M637 was a young cow that was pregnant each year but failed to wean a second calf so was culled last year.

GROWTH	200D	+19	63%
	400D	+31	64%
	600D	+46	64%
	MWT	+60	58%
	MILK	+2	42%
FERTILITY	SS	+1.8	66%
	DTC	-4.7	46%
CARCASS	EMA	+4	47%
	RIB	+0.1	53%
	RUMP	-0.1	52%
	RBV	+0.9	42%
	IMF	+0.3	52%
	PNS		
	Flight Time	+0.01	63%
\$ INDEX	DOM	+29	
	EXP	+42	

Dam: C.I. N/A

Morphology: 91%

Wt \_\_\_\_\_

Sc \_\_\_\_\_

\$



# GYRANDA R384

'S' BULL

GYR20MR384

8/09/2019 (22 mths)



**LOT 15.**

GYRANDA FRANKLIN F238 (P)

**SIRE: GYRANDA MULGA BILL M482 (P)**

GYRANDA Z131

GYRANDA FOR REAL F136 (PS)

**DAM: GYRANDA L589**

GYRANDA B613



**Notes:** A tremendous depth of body in this quiet bull. Carcase from tip to toe. Another low birthweight, high growth and fertility son of Mulga Bill. He also carries one of the highest IMF EBV's for marbling in the draft and in the top 1% of the breed. Dam L589 has weaned six calves in five years - her last a pair of twins. Her Dam - B613 - weaned 9/9. Her dam Gyranda 54S weaned 9/9. Her Dam Gyranda 75I weaned 6/6 etc. etc.

GROWTH	200D	+13	66%
	400D	+24	66%
	600D	+32	68%
	MWT	+46	62%
	MILK	-3	47%
FERTILITY	SS	+1.7	68%
	DTC	-7.3	50%
CARCASE	EMA	+1.5	51%
	RIB	+0.8	58%
	RUMP	+0.6	57%
	RBV	-0.2	46%
	IMF	+0.7	56%
Flight Time	PNS	+3.2	40%
	Flight Time	+0.14	67%
\$ INDEX	DOM	+21	
	EXP	+34	

Dam: C.I. 363 days

Morphology: 78%

Wt \_\_\_\_\_

Sc \_\_\_\_\_

\$



# GYRANDA R406

'S' BULL

GYR20MR406

2/09/2019 (22 mths)

ROSEVALE BATTALLION E622 (P)

**SIRE: ROWANLEA KLUGER K32 (P)**

ROWANLEA E31 (P)

ROSEVALE NODDY A18 (P)

**DAM: GYRANDA H297 (P)**

GYRANDA D307

**Notes:** A lovely quiet bull. The ideal sheath, a dark coat and tremendous muscle from head to toe. This bull has growth and EMA data in the top 10% of the breed. Dam H297 (P) calved at three and has weaned seven calves in eight years including an \$11,000 bull sold to Owen Anderson and an \$8000 bull sold to Allan and Maree Green.

GROWTH	200D	+14	68%
	400D	+28	68%
	600D	+39	70%
	MWT	+62	64%
	MILK	-3	56%
FERTILITY	SS	+2.8	70%
	DTC	-1.3	56%
CARCASE	EMA	+3.2	55%
	RIB	-0.4	61%
	RUMP	-0.7	60%
	RBV	+1.1	50%
	IMF	-0.1	60%
	PNS	+4.4	41%
	Flight Time	+0.28	69%
\$ INDEX	DOM	+26	
	EXP	+34	

Dam: C.I. 452 days

Morphology: 83%

Wt \_\_\_\_\_

Sc \_\_\_\_\_

\$





# GYRANDA R634 (P)

'S' BULL

GYR20MR634

8/10/2019 (21 mths)



**LOT 17.**

ROSEVALE DEMOCRAT G268 (P)

**SIRE: GYRANDA MONTO M272 (P)**

GYRANDA D549

ROSEVALE NODDY A18 (P)

**DAM: GYRANDA L517 (P)**

GYRANDA D391

**Notes:** A long bull with a lovely dark coat and 92% morphology! Dam Gyranda L517 weaned six calves in five years - including a set of twins.

GROWTH	200D	+18	67%
	400D	+9	68%
	600D	+27	69%
	MWT	+49	63%
	MILK	-3	51%
FERTILITY	SS	-0.4	70%
	DTC	-0.4	52%
CARCASE	EMA	+2.5	54%
	RIB	+0.1	60%
	RUMP	-0.1	59%
	RBV	+0.9	49%
	IMF	-0.2	59%
\$ INDEX	PNS	-0.1	41%
	Flight Time	-0.04	68%
\$ INDEX	DOM	+10	
	EXP	+23	

Dam: C.I. 379 days

Morphology: 92%

Wt \_\_\_\_\_

Sc \_\_\_\_\_

\$



# GYRANDA R642 (P)

'S' BULL

GYR20MR642

11/10/2019 (21 mths)

ROSEVALE DEMOCRAT G268 (P)

**SIRE: GYRANDA MONTO M272 (P)**

GYRANDA D549

GYRANDA FLYNN Y226

**DAM: GYRANDA E535**

GYRANDA V613

**Notes:** A smooth, dark young polled bull with great muscle definition typical of the Gyranda Monto line. His data backs up what you see with EMA and fat figures at the top of the breed. Dam Gyranda E535 has weaned ten calves in eleven years including a \$10,500 bull sold to the Killens and a \$15,000 bull sold to Stewart and Anna Weir.

Dam: C.I. 412 days

Morphology: 84%

Wt \_\_\_\_\_

Sc \_\_\_\_\_

\$

GROWTH	200D	+14	68%
	400D	+16	69%
	600D	+28	71%
	MWT	+31	64%
	MILK	-3	55%
FERTILITY	SS	+1.3	71%
	DTC	-4.3	53%
CARCASS	EMA	+4	55%
	RIB	+1.1	61%
	RUMP	+0.9	60%
	RBV	+1.2	49%
	IMF	-0.1	59%
	PNS	-4.5	41%
	Flight Time	+0.05	70%
\$ INDEX	DOM	+23	
	EXP	+32	



# GYRANDA R108 (PS)

'S' BULL

GYR20MR108

2/09/2019 (22 mths)

ROSEVALE DEMOCRAT G268 (P)

**SIRE: GYRANDA MONTO M272 (P)**

GYRANDA D549

ROSEVALE GUMPER X546 (P)

**DAM: GYRANDA G423**

GYRANDA Y461

**Notes:** An eye-catching dark bull with excellent muscle definition and a tidy sheath. His Dam - Gyranda G423 - calved at three and has had seven calves in eight years, including her last two bull calves sold in the annual sale to Beauchamps and Dugald Hamilton.

Dam: C.I. 413 days

Morphology: 70%

Wt \_\_\_\_\_

Sc \_\_\_\_\_

\$

GROWTH	200D	+16	68%
	400D	+12	69%
	600D	+18	71%
	MWT	+26	65%
	MILK	-3	55%
FERTILITY	SS	-0.2	71%
	DTC	+1.8	54%
CARCASS	EMA	+3.4	55%
	RIB	+0.1	62%
	RUMP	+0	61%
	RBV	+0.9	49%
	IMF	-0.4	60%
	PNS	-3.1	42%
	Flight Time	-0.02	70%
\$ INDEX	DOM	+12	
	EXP	+13	



# GYRANDA R144 (P)

'S' BULL

GYR20MR144

10/09/2019 (22 mths)

WIGHTFIELDS DOWNPOUR G21 (P)

**SIRE: GYRANDA NEWTON N202 (PP)(AI)**

GYRANDA F349 (P)

DANGARFIELD PENROSE P194 (P)

**DAM: GYRANDA M765**

GYRANDA D347

**Notes:** A clean coated poll bull by new sire Gyranda Newton N202. A big calf (45kg) when born - so stay away from heifers. His dam - Gyranda M765 - calved at two and has weaned three calves in four years. Her Dam - D347 - weaned ten from ten.

Dam: C.I. 522 days

Morphology: 95%

Wt \_\_\_\_\_

Sc \_\_\_\_\_

\$

GROWTH	200D	+20	70%
	400D	+22	68%
	600D	+32	66%
	MWT	+38	60%
	MILK	-3	51%
FERTILITY	SS	-1	69%
	DTC	+0.1	51%
CARCASE	EMA	+4.7	51%
	RIB	+0.3	55%
	RUMP	+0	54%
	RBV	+1.2	44%
	IMF	+0.4	52%
PNS	PNS	+6.4	43%
	Flight Time	+0.03	67%
\$ INDEX	DOM	+22	
	EXP	+26	



# GYRANDA R386 (P)

'S' BULL

GYR20MR386

24/09/2019 (22 mths)

DANGARFIELD PENROSE P194 (P)

**SIRE: GYRANDA MOBY DICK M224 (P)**

GYRANDA F249 (P)

GYRANDA C224

**DAM: GYRANDA F579**

GYRANDA A293

**Notes:** A quiet poll bull with real breed character. Long in the body, loose skin with a good sheath and well proportioned throughout. Excellent fat and fertility data. Dam F579 calved at three but has not missed since, weaning nine so far including a \$6000 bull sold to Murray Davis. Her Dam Gyranda A293 weaned 10/10.

Dam: C.I. 374 days

Morphology: 88%

Wt \_\_\_\_\_

Sc \_\_\_\_\_

\$

GROWTH	200D	+14	67%
	400D	+16	68%
	600D	+29	68%
	MWT	+38	64%
	MILK	+1	54%
FERTILITY	SS	+0.8	69%
	DTC	-7	54%
CARCASE	EMA	+2	53%
	RIB	+1.3	58%
	RUMP	+1.7	57%
	RBV	+0.2	47%
	IMF	+0	55%
PNS	PNS	+4	44%
	Flight Time	+0.15	70%
\$ INDEX	DOM	+18	
	EXP	+33	





# GYRANDA R216 (PP)

'S' BULL

GYR20MR216

29/08/2019 (23 mths)



**LOT 22.**

ROSEVALE DEMOCRAT G268 (P)

**SIRE: GYRANDA MONTO M272 (P)**

GYRANDA D549

GYRANDA JEREMIAH J164 (PS)

**DAM: GYRANDA M145 (P)**

GYRANDA K393



**Notes:** Oozing power with muscle throughout. A growthy Homozygous poll bull with tremendous carcass data. Dam M145 (P) calved at two and has delivered three calves in four years. Her Dam - Gyranda K393 - has weaned six calves in six years for a perfect record, and her dam -Gyranda Y243 maintained a perfect record also, weaning 13 calves. Just for kicks, her Dam Gyranda L21 calved at two and weaned 12 calves in 12 years!

**Dam:** C.I. 580 days

**Morphology:** 86%

Wt \_\_\_\_\_

Sc \_\_\_\_\_

\$

GROWTH	200D	+17	66%
	400D	+18	66%
	600D	+26	67%
	MWT	+33	60%
	MILK	+0	50%
FERTILITY	SS	+1.6	67%
	DTC	-3.4	51%
CARCASS	EMA	+3.2	52%
	RIB	+1.2	57%
	RUMP	+1.2	55%
	RBV	+0.7	45%
	IMF	-0.1	55%
FERTILITY	PNS	-1.1	38%
	Flight Time	+0.03	67%
\$ INDEX	DOM	+20	
	EXP	+27	



# GYRANDA R488 (P)

'S' BULL

GYR20MR488

7/09/2019 (22 mths)



**LOT 23.**

ROSEVALE BATTALLION E622 (P)

**SIRE: ROWANLEA KLUGER K32 (P)**

ROWANLEA E31 (P)

GYRANDA DYNAMIC D444 (P)

**DAM: GYRANDA H431**

GYRANDA A709

**Notes:** A long, dark poll bull, deep in the flank and ready to pour plenty of weight into his progeny. A big, quiet son of Rowanlea Kluger K32 this bull has growth data in the top 5% of the breed. His dam - Gyranda H431 calved at two and has had seven calves in eight years, missing her first last year.

**Dam:** C.I. 360 days

**Morphology:** 79%

Wt \_\_\_\_\_

Sc \_\_\_\_\_

\$

GROWTH	200D	+18	68%
	400D	+28	69%
	600D	+45	71%
	MWT	+58	65%
	MILK	+1	56%
FERTILITY	SS	+1.6	71%
	DTC	+3.3	57%
CARCASE	EMA	+2.4	55%
	RIB	-0.7	62%
	RUMP	-1.3	61%
	RBV	+0.7	49%
	IMF	-0.2	60%
\$ INDEX	PNS	+5.1	41%
	Flight Time	+0.23	63%
\$ INDEX	DOM	+17	
	EXP	+24	



# GYRANDA R280 (PS)

'S' BULL

GYR20MR280

1/09/2019 (22 mths)

EIDSVOLD STATION A166 (PS)

**SIRE: GYRANDA FOR REAL F136 (PS)**

GYRANDA CALAMITY C113

EIDSVOLD STATION Z342 (P)

**DAM: GYRANDA D237**

GYRANDA W193



**Notes:** A stylish dark, poll bull with a deep flank, good sheath and wide across his hindquarter. Extraordinary fertility data. Morphology of 98%. Scrotal and Days to Calving EBV data both in the top five percent of the breed. Combine this with good growth and fats in the top 10% of the breed and you will be hard pressed to fault this bull. As you'd expect his dam - D237 weaned 11 calves in 11 years while her dam Gyranda W193 weaned 6/6.

Dam: C.I. 361 days

Morphology: 98%

Wt \_\_\_\_\_

Sc \_\_\_\_\_

\$

GROWTH	200D	+13	70%
	400D	+24	71%
	600D	+28	72%
	MWT	+42	68%
	MILK	-4	62%
FERTILITY	SS	+3.2	72%
	DTC	-10.3	60%
CARCASS	EMA	+2.2	58%
	RIB	+1.6	64%
	RUMP	+1	63%
	RBV	+0.6	52%
	IMF	+0.4	61%
\$ INDEX	PNS	+5.4	52%
	Flight Time	+0.15	71%
\$ INDEX	DOM	+30	
	EXP	+42	





# GYRANDA R444 (P)

'S' BULL

GYR20MR444

2/09/2019 (22 mths)



**LOT 25.**

ROSEVALE BATTALLION E622 (P)

**SIRE: ROWANLEA KLUGER K32 (P)**

ROWANLEA E31 (P)

TYNDALE REPLAY 167 (AI) (P)

**DAM: GYRANDA J229**

GYRANDA C617 (P)

**Notes:** A long, dark bull ready to grow into his frame. Excellent fat and temperament data. Dam J229 has weaned five calves in six years.

Dam: C.I. 436 days

Morphology: 85%

Wt \_\_\_\_\_

Sc \_\_\_\_\_

\$

GROWTH	200D	+16	68%
	400D	+22	69%
	600D	+35	70%
	MWT	+48	64%
	MILK	+0	55%
FERTILITY	SS	+2	71%
	DTC	-1.6	55%
CARCASE	EMA	+2.5	55%
	RIB	+0.9	61%
	RUMP	+0.5	60%
	RBV	+0.3	50%
	IMF	+0.3	60%
\$ INDEX	PNS	+8	41%
	Flight Time	+0.08	64%
\$ INDEX	DOM	+17	
	EXP	+27	



# GYRANDA R470 (P)

'S' BULL

GYR20MR470

10/10/2019 (21 mths)



**LOT 26.**

ROSEVALE BATTALLION E622 (P)

**SIRE: ROWANLEA KLUGER K32 (P)**

ROWANLEA E31 (P)

GYRANDA ALCATRAZ A140 (P)

**DAM: GYRANDA H677 (P)**

GYRANDA V273

**Notes:** This younger poll bull has a dark coat, excellent sheath and is quiet as a mouse. Plenty of weight and high IMF data. Dam H677 has had six calves in seven years.

Dam: C.I. 440 days

Morphology: 90%

Wt \_\_\_\_\_

Sc \_\_\_\_\_

\$

GROWTH	200D	+10	67%
	400D	+11	67%
	600D	+20	67%
	MWT	+20	64%
	MILK	-1	57%
FERTILITY	SS	+1	61%
	DTC	-9.5	56%
CARCASE	EMA	+1.6	54%
	RIB	+0.3	58%
	RUMP	-0.1	57%
	RBV	+0.4	48%
	IMF	+0.4	56%
\$ INDEX	PNS	+3.7	41%
	Flight Time	+0.24	65%
\$ INDEX	DOM	+18	
	EXP	+32	



# GYRANDA R614

'S' BULL

GYR20MR614

23/10/2019 (21 mths)

ROSEVALE DEMOCRAT G268 (P)

**SIRE: GYRANDA MONTO M272 (P)**

GYRANDA D549

ROSEVALE BRIGADIER B422 (P)

**DAM: GYRANDA E631**

GYRANDA C265

**Notes:** An eyecatching carcass bull. He is strong in the topline with plenty of room in the hindquarter, wrapped up in a lovely slick coat. Great growth and carcass data. His dam - E631 - weaned nine calves in ten years.

Dam: C.I. 416 days

Morphology: 82%

Wt \_\_\_\_\_

Sc \_\_\_\_\_

\$

GROWTH	200D	+20	67%
	400D	+20	68%
	600D	+39	70%
	MWT	+31	64%
	MILK	+1	54%
FERTILITY	SS	+0.6	69%
	DTC	+0	53%
CARCASS	EMA	+4.7	54%
	RIB	+0.7	61%
	RUMP	+0.8	60%
	RBY	+0.8	48%
	IMF	-0.1	59%
	PNS	+2	39%
	Flight Time	-0.18	69%
\$ INDEX	DOM	+19	
	EXP	+27	





# GYRANDA R134 (PS)(AI)

'S' BULL

GYR20MR134

9/09/2019 (22 mths)



**LOT 28.**

WARENDA CHARLTON C526 (PS)

**SIRE: WAVE HILL JAGER J14 (PS)**

WAVE HILL F53

GYRANDA FOR REAL F136 (PS)

**DAM: GYRANDA M275 (P)**

GYRANDA C931



**Notes:** A dark coated poll scur bull by RNA Grand Champion bull Wave Hill Jager. This is a low birthweight bull, well proportioned with a tidy sheath and excellent fat data. His Dam- Gyranda M275 (P). calved at two and has weaned a calf every year since. Her first calf sold to Scott McGuigan for \$7,000. Her dam C931 weaned 12/12 before going missing last year.

**Dam:** C.I. 374 days

**Morphology:** 75%

**Wt** \_\_\_\_\_

**Sc** \_\_\_\_\_

\$

GROWTH	200D	+4	64%
	400D	+12	62%
	600D	+11	63%
	MWT	+16	60%
	MILK	+0	45%
FERTILITY	SS	+1.2	53%
	DTC	-11.5	47%
CARCASE	EMA	+1.8	48%
	RIB	+1.6	52%
	RUMP	+1.5	51%
	RBV	+0.4	41%
	IMF	+0.4	49%
PNS	Flight Time	+0.17	64%
\$ INDEX	DOM	+22	
	EXP	+32	



# GYRANDA R162 (PS)

'S' BULL

GYR20MR162

19/09/2019 (22 mths)

GYRANDA FRANKLIN F238 (P)

**SIRE: GYRANDA MULGA BILL M482 (P)**

GYRANDA Z131

GYRANDA ASSASSIN A406

**DAM: GYRANDA F721 (P)**

GYRANDA A245 (P)



**Notes:** A tidy quiet bull with a good sheath and dark coat. A low birthweight bull suitable for heifers. Excellent fertility data coupled with high IMF. Dam F721 calved at two, has delivered ten calves in ten years and is pregnant again.

Dam: C.I. 362 days

Morphology: 90%

Wt \_\_\_\_\_

Sc \_\_\_\_\_

\$

GROWTH	200D	+7	68%
	400D	+16	67%
	600D	+22	69%
	MWT	+33	62%
	MILK	-1	48%
FERTILITY	SS	+3	69%
	DTC	-9.1	50%
CARCASE	EMA	+0.3	51%
	RIB	+0.5	58%
	RUMP	+0.3	57%
	RBV	-0.4	46%
	IMF	+0.6	56%
PNS	PNS	-2	41%
	Flight Time	+0.17	68%
\$ INDEX	DOM	+16	
	EXP	+30	



# GYRANDA R306 (P)

'S' BULL

GYR20MR306

22/09/2019 (22 mths)

ROSEVALE BATTALION F446 (P)

**SIRE: GYRANDA MEDICINE MAN M236(P)**

GYRANDA F349 (P)

TYNDALE REPLAY 167 (AI) (P)

**DAM: GYRANDA K885**

GLENAAN R093

**Notes:** A clean coated poll bull. Deep through the torso and quiet. Excellent carcass data. Dam - Gylanda K885 - started late but has weaned four calves in four years.

Dam: C.I. 375 days

Morphology: 75%

Wt \_\_\_\_\_

Sc \_\_\_\_\_

\$

GROWTH	200D	+12	66%
	400D	+14	67%
	600D	+22	68%
	MWT	+20	62%
	MILK	+3	46%
FERTILITY	SS	+1.2	68%
	DTC	+1.4	49%
CARCASE	EMA	+2.2	51%
	RIB	+1.1	59%
	RUMP	+0.9	58%
	RBV	+0.2	46%
	IMF	+0.4	57%
PNS	PNS	+0.8	40%
	Flight Time	+0.43	68%
\$ INDEX	DOM	+9	
	EXP	+12	





# GYRANDA R302 (PS)

'S' BULL

GYR20MR302

24/08/2019 (23 mths)



**LOT 31.**

FOREST PARK FOR/7278

**SIRE: FOREST PARK JUDGE 326 (PP)**

FOREST PARK FOR/7769

GYRANDA HUMMER H274 (P)

**DAM: GYRANDA N453**

GYRANDA K689

**Notes:** A big, roomy bull with an abundance of style, a slick coat and excellent carcass data. He carries one of the highest IMF EBV figures in the draft with his sire Forest Park Judge 326 (PP) currently ranked the highest in the breed for marbling. He melds it well with excellent growth, fat and fertility data. Dam Gyranda N453 calved at three and has weaned two calves in two years. Her Dam - K689 - weaned seven calves in six years - including a set of twins.

**Dam:** C.I. 458 days

**Morphology:** 73%

**Wt** \_\_\_\_\_

**Sc** \_\_\_\_\_

\$

<b>GROWTH</b>	<b>200D</b>	+18	63%
	<b>400D</b>	+16	64%
	<b>600D</b>	+28	66%
	<b>MWT</b>	+32	58%
	<b>MILK</b>	+1	31%
<b>FERTILITY</b>	<b>SS</b>	+0.6	68%
	<b>DTC</b>	-2.8	42%
<b>CARCASS</b>	<b>EMA</b>	+2.4	47%
	<b>RIB</b>	+1	55%
	<b>RUMP</b>	+0.7	54%
	<b>RBV</b>	+0.3	42%
	<b>IMF</b>	<b>+0.7</b>	<b>55%</b>
<b>PNS</b>	<b>PNS</b>		
	<b>Flight Time</b>	+0.05	65%
<b>\$ INDEX</b>	<b>DOM</b>	+15	
	<b>EXP</b>	+24	



# GYRANDA R376 (P)

'S' BULL

GYR20MR376

7/09/2019 (22 mths)



**LOT 32.**

DANGARFIELD PENROSE P194 (P)

**SIRE: GYRANDA MOBY DICK M224 (P)**

GYRANDA F249 (P)

GYRANDA FOOTLOOSE F102

**DAM: GYRANDA K515**

GYRANDA G567

**Notes:** A poll bull carrying exceptional carcass. Take a look at his hindquarter & the thickness running all the way through to his shoulders. His EBV for muscle (EMA) is in the top 1% of the breed & one of the top three in this draft of bulls, but his fat data is also in the top 5% of the breed. Two or three generations ago we would never have dreamed of being able to combine two such antagonistic traits - muscle & fat to such a degree. Such is the power of data & selecting curve bending genetics. This bull also has excellent growth & fertility data & a tidy sheath. Dam K515 calved at two & has weaned four calves in five years.

**Dam:** C.I. 480 days

**Morphology:** 84%

**Wt** \_\_\_\_\_

**Sc** \_\_\_\_\_

\$

<b>GROWTH</b>	<b>200D</b>	+16	66%
	<b>400D</b>	+20	67%
	<b>600D</b>	+34	69%
	<b>MWT</b>	+33	63%
	<b>MILK</b>	-1	50%
<b>FERTILITY</b>	<b>SS</b>	+0.9	69%
	<b>DTC</b>	-4.7	51%
<b>CARCASS</b>	<b>EMA</b>	+5.6	52%
	<b>RIB</b>	+2	60%
	<b>RUMP</b>	+2.3	59%
	<b>RBV</b>	+1	47%
	<b>IMF</b>	+0.1	57%
	<b>PNS</b>	+2.8	40%
	<b>Flight Time</b>	+0	69%
<b>\$ INDEX</b>	<b>DOM</b>	+26	
	<b>EXP</b>	+36	



# GYRANDA R142 (P)

'S' BULL

GYR20MR142

10/09/2019 (22 mths)



**LOT 33.**

WATASANTA FIDDLESTICKS 1504(P)

**SIRE: GYRANDA MUSTAFAR M576 (P)**

GYRANDA J359

GYRANDA HARVARD H394

**DAM: GYRANDA P213**

GYRANDA F335



**Notes:** The thickness in this bull starts behind the shoulders and doesn't diminish until his back hocks. An excellent hindquarter and EMA data at the top of the breed simply backs up what you see. This bull is lighter in colour, carries a tidy sheath, loose skin and a great attitude. He was the first calf of Gyranda P213. She failed to rebreed in a dry 2019 but is pregnant again now. Her dam - F335 - calved at two and weaned seven calves in eight years before being culled in 2019.

**Dam:** C.I. N/A

**Morphology:** 86%

**Wt** \_\_\_\_\_

**Sc** \_\_\_\_\_

\$

GROWTH	200D	+11	67%
	400D	+22	65%
	600D	+30	68%
	MWT	+25	59%
	MILK	+1	44%
FERTILITY	SS	+2.4	67%
	DTC	-3.8	48%
CARCASE	EMA	+4.3	50%
	RIB	+1.4	57%
	RUMP	+1	56%
	RBV	+1.1	44%
	IMF	+0.1	56%
PNS	PNS	+2.8	35%
	Flight Time	+0.12	66%
\$ INDEX	DOM	+26	
	EXP	+31	



# GYRANDA R324 (PS)

'S' BULL

GYR20MR324

24/08/2019 (23 mths)



**LOT 34.**

GYRANDA CESAR C422 (PS)

**SIRE: GYRANDA JEREMIAH J164 (PS)**

GYRANDA COFFEE C671

GYRANDA C160

**DAM: GYRANDA G849**

GYRANDA C855

**Notes:** A thick bodied, dark coated young bull, meshing growth, fertility and carcass in a highly presentable package. Dam - Gyranda G849 calved at two and has weaned eight calves in nine years, including her last bull calf which sold to Donald Joyce for \$12,000.

**Dam:** C.I. 411 days

**Morphology:** 90%

**Wt** \_\_\_\_\_

**Sc** \_\_\_\_\_

\$

<b>GROWTH</b>	<b>200D</b>	<b>+20</b>	<b>68%</b>
	<b>400D</b>	<b>+31</b>	<b>69%</b>
	<b>600D</b>	<b>+39</b>	<b>71%</b>
	<b>MWT</b>	<b>+56</b>	<b>65%</b>
	<b>MILK</b>	<b>+3</b>	<b>54%</b>
<b>FERTILITY</b>	<b>SS</b>	<b>+1.9</b>	<b>71%</b>
	<b>DTC</b>	<b>-5</b>	<b>55%</b>
<b>CARCASS</b>	<b>EMA</b>	<b>+3</b>	<b>55%</b>
	<b>RIB</b>	<b>+0.5</b>	<b>61%</b>
	<b>RUMP</b>	<b>+0.1</b>	<b>60%</b>
	<b>RBV</b>	<b>+0.5</b>	<b>49%</b>
	<b>IMF</b>	<b>+0.2</b>	<b>59%</b>
<b>\$ INDEX</b>	<b>PNS</b>	<b>+3.2</b>	<b>47%</b>
	<b>Flight Time</b>	<b>-0.02</b>	<b>69%</b>
<b>\$ INDEX</b>	<b>DOM</b>	<b>+27</b>	
	<b>EXP</b>	<b>+36</b>	

# A LIFE WELL LIVED

## Burnett Joyce ~ 1947-2021

*Burnett's death in May 2021 leaves a big hole in our lives and marks the end of one of the most inspiring of partnerships. For almost 50 years, Louise and Burnett made a formidable team. They loved life, the land, adventure, learning and people; constantly curious about new and better ways. In 2017 they were co-jointly recognised as Modern Pioneers of the Banana Shire as for their contribution to the beef industry, land management, rural education and community. As John Warlters (QCL) expressed in his forward of Louise's book, Sale-O and Smokos "They're not cattle people, they're great people who have made cattle their lives".*

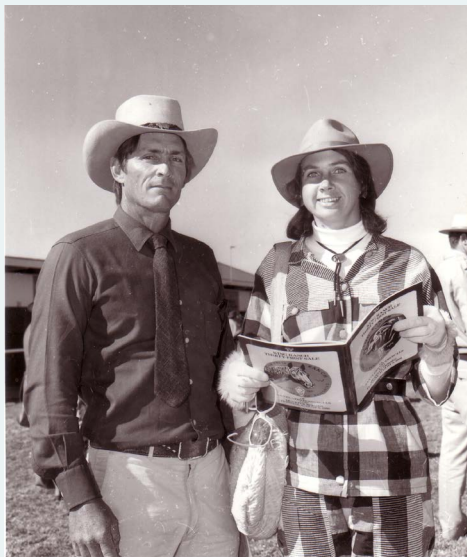
*In 2006, Burnett was awarded the RW Vincent award in recognition of "outstanding contribution to the beef industry of Australia".*

*His love of innovation and research saw our family involved in the introduction of dung beetles to the Dawson Valley, the invention and patenting of the curved de-horning knife, pioneering the use of stock dams to breed Saratoga, many land management initiatives and beef industry research projects. Dr Mike McGowan recalls that undoubtedly one of Burnett's greatest contributions was in initiating the application of DNA typing (parentage testing) to manage breeding herds. He constantly encouraged scientists to think about the research that needed to be done to address critical industry problems. The work that was initiated at Gyrenda in the early '90's is internationally recognised.*



*Additionally, Burnett ...*

- Represented Queensland in gymnastics while boarding at The Southport School;*
- Started the first cutting event in Australia – the Neuestella Cutting and Quarter Mile Racing Club in the late 1960s, along with Chilla Seaney, Paul Robinson and Kerry Williams;*
- Served two years of National Service in the army and was conscripted for a tour of duty in Vietnam.*
- Supplied horses for the annual Camboon Race Meetings then sponsorship for the Camboon Campdraft;*
- Commissioned raised funds and negotiated for the Santa Gertrudis bull statue to be erected in the “Beef Capital of Australia” (Rockhampton) in 1984;*
- Was a board member of Beef Australia for many years, chairman of the Entertainment Committee and President of the Theodore Show Society.;*
- Was the inaugural President of the Callide Dawson Carcass Competition, with Louise seconded to take individual photos of each entrant, so they could follow their entry from hoof to hook.*
- Served the Santa Gertrudis Breeders Association (Aust.) as a Councillor for 31 years, including 3 years as President;*
- Was a sought-after national and international beef cattle judge;*
- Participated in Trade Missions and seen Gyrenda genetics used successfully in many countries of the world.*
- Established and supported youth camps, judging schools and field days;*
- Was a well-respected mentor and role-model to many;*
- Loved fishing, driving his bulldozer, listening to the ABC and a good practical joke;*
- Was an avid collector of “road treasures”, rocks, experiences, stories and friends;*
- Built impressive fences, huge contour banks, weird metal & wood sculptures, a progressive business, solid family foundations, and a lasting legacy.*





*Embracing early succession planning allowed Burnett to hand over the reins with confidence, and embark on new adventures with Louise. Ultimately, it also gave us as a family the freedom to say goodbye without any caveats or hidden clauses when his time came. With the next two generations now back on the land, involved in conservation, research, education, breeding cattle, messing with machinery and challenging the status quo, he would consider that a perfectly executed dismount.*

*Thank you for the continued love and support from far and wide.  
Louise, Nikki, Hayley, Jo & Dan*



*Joyce brothers - Donald, deBurgh, Burnett and Shane*



*The Gylanda Joyce clan - Christmas 2019*





# GYRANDA R236 (PS)

'S' BULL

GYR20MR236

13/09/2019 (22 mths)

EIDSVOLD STATION A166 (PS)

**SIRE: GYRANDA FOR REAL F136 (PS)**

GYRANDA CALAMITY C113

ROSEVALE NODDY A18 (P)

**DAM: GYRANDA K599**

GYRANDA G853



**Notes:** An upstanding dark bull with a good sheath, plenty of length and breed character, Excellent growth, fertility and fat EBVs. Dam Gyranda K599 had three calves in four years before getting bogged in the dry summer of last year. Interestingly she was bogged when we early weaned this bull. He came off at 123kg in January 2020...amazing how they can recover.

Dam: C.I. 564 days

Morphology: 80%

Wt \_\_\_\_\_

Sc \_\_\_\_\_

\$

GROWTH	200D	+14	67%
	400D	+27	68%
	600D	+37	70%
	MWT	+66	65%
	MILK	-3	57%
FERTILITY	SS	+0.4	70%
	DTC	-3.3	58%
CARCASE	EMA	+2.4	54%
	RIB	+0.8	61%
	RUMP	+0.9	60%
	RBV	+0.4	50%
	IMF	+0.3	59%
PNS	PNS	+0.1	51%
	Flight Time	+0.16	69%
\$ INDEX	DOM	+23	
	EXP	+34	



# GYRANDA R238 (PS)

'S' BULL

GYR20MR238

18/09/2019 (22 mths)

EIDSVOLD STATION A166 (PS)

**SIRE: GYRANDA FOR REAL F136 (PS)**

GYRANDA CALAMITY C113

GYRANDA DYNAMIC D444 (P)

**DAM: GYRANDA M413**

GYRANDA G327



**Notes:** A slick coated, large framed poll scurr bull with great fat EBVs. Dam M413 calved at three but has not missed since, weaning three to date.

Dam: C.I. 387 days

Morphology: 75%

Wt \_\_\_\_\_

Sc \_\_\_\_\_

\$

GROWTH	200D	+13	68%
	400D	+21	69%
	600D	+32	70%
	MWT	+63	65%
	MILK	-2	56%
FERTILITY	SS	+1.2	71%
	DTC	+1.3	58%
CARCASE	EMA	+1.4	54%
	RIB	+1.1	62%
	RUMP	+1.2	61%
	RBV	+0.4	48%
	IMF	-0.1	59%
PNS	PNS	-0.1	51%
	Flight Time	+0.29	70%
\$ INDEX	DOM	+15	
	EXP	+22	



# GYRANDA R262 (PS)

'S' BULL

GYR20MR262

15/09/2019 (22 mths)

EIDSVOLD STATION A166 (PS)

**SIRE: GYRANDA FOR REAL F136 (PS)**

GYRANDA CALAMITY C113

GYRANDA C160

**DAM: GYRANDA G421**

GYRANDA C701



**Notes:** A well built dark, poll scurr bull carrying a good sheath. Dam Gyranda G481 has weaned eight calves in eight years and her last bull calf sold to the Kirkwoods last year for \$10,000.

Dam: C.I. 364 days

Morphology: 87%

Wt \_\_\_\_\_

Sc \_\_\_\_\_

\$

GROWTH	200D	+15	69%
	400D	+22	70%
	600D	+29	71%
	MWT	+51	66%
	MILK	-3	58%
FERTILITY	SS	+0.8	72%
	DTC	-0.8	59%
CARCASE	EMA	+2.8	56%
	RIB	+0.6	62%
	RUMP	+0.5	62%
	RBV	+0.6	51%
	IMF	+0.2	60%
PNS	PNS	+0	52%
	Flight Time	+0.06	70%
\$ INDEX	DOM	+19	
	EXP	+25	



# GYRANDA R620 (P)

'S' BULL

GYR20MR620

31/10/2019 (21 mths)

ROSEVALE DEMOCRAT G268 (P)

**SIRE: GYRANDA MONTO M272 (P)**

GYRANDA D549

GYRANDA EGON E232 (PS)

**DAM: GYRANDA L659 (P)**

GYRANDA G723

**Notes:** A lighter coloured, well muscled poll bull with a good sheath. This is a younger bull with excellent growth and EMA data. His Dam - Gyranda L659 (P) - has weaned five from five. Her last bull calf sold to Robert Sullivan last year for \$15,000.

Dam: C.I. 366 days

Morphology: 84%

Wt \_\_\_\_\_

Sc \_\_\_\_\_

\$

GROWTH	200D	+24	67%
	400D	+31	68%
	600D	+44	69%
	MWT	+64	63%
	MILK	-1	51%
FERTILITY	SS	+2.5	69%
	DTC	-0.1	51%
CARCASE	EMA	+4.3	53%
	RIB	-0.7	60%
	RUMP	-1.6	59%
	RBV	+1.7	48%
	IMF	-0.4	58%
PNS	PNS	+0.7	39%
	Flight Time	+0.34	68%
\$ INDEX	DOM	+29	
	EXP	+36	



# GYRANDA R480

**PUREBRED**

GYR20MR480

15/09/2019 (22 mths)

ROSEVALE BATTALLION E622 (P)

**SIRE: ROWANLEA KLUGER K32 (P)**

ROWANLEA E31 (P)

ROSEVALE DEMOCRAT G268 (P)

**DAM: GYRANDA K293**

GYRANDA F373

**Notes:** An early maturing horned bull with plenty of frame. Great data across the board especially for EMA. Dam Gyranda K293 calved at two and has had six calves in six years.

Dam: C.I. 353 days

Morphology: 74%

Wt \_\_\_\_\_

Sc \_\_\_\_\_

\$

GROWTH	200D	+15	68%
	400D	+25	69%
	600D	+34	70%
	MWT	+42	64%
	MILK	-4	55%
FERTILITY	SS	+2.3	70%
	DTC	-4.2	56%
CARCASE	EMA	+4.1	54%
	RIB	+0	61%
	RUMP	-0.5	60%
	RBY	+1.1	48%
	IMF	+0.1	59%
	PNS	+2.8	41%
	Flight Time	+0.33	64%
\$ INDEX	DOM	+28	
	EXP	+35	





# GYRANDA R490

**PUREBRED**

GYR20MR490  
9/09/2019 (22 mths)



**LOT 40.**

ROSEVALE BATTALLION E622 (P)

**SIRE: ROWANLEA KLUGER K32 (P)**

ROWANLEA E31 (P)

DANGARFIELD PENROSE P194 (P)

**DAM: GYRANDA G279**

GYRANDA C305 (CULL)

**Notes:** A real meat machine, carrying carcass from nose to flank and quiet as a mouse. This horned bull has the perfect sheath and plenty of breed character. Typical of the Kluger line his growth and temperament data is in the top 5% of the breed. Dam Gyranda G279 calved at three and has had seven calves in eight years, missing her first last year.

**Dam:** C.I. 368 days

**Morphology:** 78%

Wt \_\_\_\_\_

Sc \_\_\_\_\_

\$

GROWTH	200D	+25	67%
	400D	+37	68%
	600D	+51	69%
	MWT	+71	64%
	MILK	-2	56%
FERTILITY	SS	+1	69%
	DTC	+1.7	57%
CARCASS	EMA	+4.6	55%
	RIB	-0.8	60%
	RUMP	-1.2	60%
	RBV	+1.4	49%
	IMF	-0.3	58%
FERTILITY	PNS	+7.6	42%
	Flight Time	+0.24	64%
\$ INDEX	DOM	+30	
	EXP	+36	



# GYRANDA R218 (P)

**PUREBRED**

GYR20MR218  
5/09/2019 (22 mths)

TOOKEY CREEK GURU G34 (P)

**SIRE: GYRANDA LORAX L794 (PP)**

GYRANDA J359

EIDSVOLD STATION GILBERT G346 (P)

**DAM: GYRANDA L101**

GYRANDA H343

**Notes:** A tall, sirey bull with plenty of length. 93% morphology and fertility EBV data in the top 10% of the breed. His Dam - Gyranda L101 - calved at two and has had four calves in five years.

Dam: C.I. 509 days

Morphology: 93%

Wt \_\_\_\_\_

Sc \_\_\_\_\_

\$

GROWTH	200D	+7	67%
	400D	+14	68%
	600D	+25	69%
	MWT	+25	63%
	MILK	+0	50%
FERTILITY	SS	+0.8	70%
	DTC	-7.1	51%
CARCASE	EMA	+1.8	53%
	RIB	+0.6	60%
	RUMP	+0.4	59%
	RBV	-0.2	47%
	IMF	+0.4	58%
PNS	PNS	+2.4	36%
	Flight Time	-0.11	67%
\$ INDEX	DOM	+15	
	EXP	+28	



# GYRANDA R150 (PP)

**PUREBRED**

GYR20MR150  
9/09/2019 (22 mths)

STRATHMORE F672

**SIRE: ROSEVALE JACKAROO J566 (P)**

ROSEVALE HARMONY F219

GYRANDA GIVEN G498 (PS)

**DAM: GYRANDA M411**

GYRANDA F157



**Notes:** An exciting Homozygous Poll prospect with excellent carcass, medium frame and plenty of punch. His dam calved at two and has weaned three calves in four years.

Dam: C.I. 542 days

Morphology: 86%

Wt \_\_\_\_\_

Sc \_\_\_\_\_

\$

GROWTH	200D	+10	68%
	400D	+24	69%
	600D	+34	70%
	MWT	+37	65%
	MILK	-2	56%
FERTILITY	SS	+0.8	71%
	DTC	-1.4	57%
CARCASE	EMA	+2.6	56%
	RIB	+0.4	62%
	RUMP	+0.5	61%
	RBV	+0.6	51%
	IMF	+0.1	60%
PNS	PNS	+2.1	51%
	Flight Time	+0.36	69%
\$ INDEX	DOM	+21	
	EXP	+27	



# GYRANDA R230 (P)

**PUREBRED**

GYR20MR230  
24/09/2019 (22 mths)



**LOT 43.**

TYNDALE REPLAY 167 (AI) (P)

**SIRE: GYRANDA GARFIELD G302 (P)**

GYRANDA Z131

GREENUP GIZZA G218 (P)

**DAM: GYRANDA K181 (P)**

GYRANDA C585

**Notes:** A long bull; lighter in colour, thick across the loin with loose skin, a good sheath and excellent fat data. Dam - Gyranda K181 (P) calved at two and has had five calves in six years. Her Dam C585 had eleven calves in 12 years.

**Dam:** C.I. 454 days

**Morphology:** 91%

**Wt** \_\_\_\_\_

**Sc** \_\_\_\_\_

\$

<b>GROWTH</b>	<b>200D</b>	+7	68%
	<b>400D</b>	+14	69%
	<b>600D</b>	+27	70%
	<b>MWT</b>	+20	64%
	<b>MILK</b>	+3	54%
<b>FERTILITY</b>	<b>SS</b>	+1.9	70%
	<b>DTC</b>	-2.2	56%
<b>CARCASE</b>	<b>EMA</b>	+2.6	54%
	<b>RIB</b>	+1.8	61%
	<b>RUMP</b>	+1.3	60%
	<b>RBV</b>	+0.2	49%
	<b>IMF</b>	+0.1	59%
<b>\$ INDEX</b>	<b>PNS</b>	+0.5	46%
	<b>Flight Time</b>	-0.1	69%
<b>\$ INDEX</b>	<b>DOM</b>	+13	
	<b>EXP</b>	+22	



# GYRANDA R430 (PS)

**PUREBRED**

GYR20MR430  
1/09/2019 (22 mths)

GYRANDA FRANKLIN F238 (P)

**SIRE: GYRANDA MULGA BILL M482 (P)**

GYRANDA Z131

GYRANDA FLYNN Y226

**DAM: GYRANDA G525**

GYRANDA D501



**Notes:** A sleek coated sire with real eye appeal. Long in the body with an excellent topline and sheath. The data on this bull is extraordinary. He carries fertility and marbling data (IMF) in the top 1% of the breed alongside growth in the top 10% of the breed. If ever a bull had a PROFIT MAKING HERDBUILDER tag this is it. His Dam - Gyranda G525 - calved at two and has weaned eight calves in nine years. Her Dam - D501 weaned 10/10.

Dam: C.I. 413 days

Morphology: 79%

Wt \_\_\_\_\_

Sc \_\_\_\_\_

\$

GROWTH	200D	+15	67%
	400D	+26	67%
	600D	+37	69%
	MWT	+55	63%
	MILK	+0	51%
FERTILITY	SS	+2.2	69%
	DTC	-12.5	51%
CARCASE	EMA	+0	53%
	RIB	+0.6	59%
	RUMP	+0.3	58%
	RBV	-0.4	47%
	IMF	+0.7	57%
PNS	PNS	-3.6	41%
	Flight Time	+0.28	69%
\$ INDEX	DOM	+24	
	EXP	+45	



# GYRANDA R582

**PUREBRED**

GYR20MR582  
23/10/2019 (21 mths)

ROSEVALE BATTALLION E622 (P)

**SIRE: ROWANLEA KLUGER K32 (P)**

ROWANLEA E31 (P)

TYNDALE REPLAY 167 (AI) (P)

**DAM: GYRANDA E439**

GYRANDA Z143

**Notes:** A big framed horned bull with ample loose skin. Square across the hips and flat along the topline. Quiet and plenty of growth potential in his progeny. Dam - Gyranda E439 - calved at two and weaned nine calves in ten years.

Dam: C.I. 415 days

Morphology: 77%

Wt \_\_\_\_\_

Sc \_\_\_\_\_

\$

GROWTH	200D	+13	68%
	400D	+20	69%
	600D	+35	70%
	MWT	+38	65%
	MILK	+4	54%
FERTILITY	SS	+1.2	70%
	DTC	+3.7	54%
CARCASE	EMA	+1.7	55%
	RIB	-0.5	61%
	RUMP	-1.1	60%
	RBV	+0.6	50%
	IMF	-0.1	59%
PNS	PNS	+1.7	39%
	Flight Time	+0.12	69%
\$ INDEX	DOM	+11	
	EXP	+16	



# GYRANDA R102 (AI)

**PUREBRED**

GYR20MR102  
1/09/2019 (22 mths)



**LOT 46.**

ROSEVALE JETHRO J208 (AI) (PS)  
**SIRE: ROSEVALE MAVERICK M102 (P)**  
 ROSEVALE BORONIA B63  
 GREENUP GIZZA G218 (P)  
**DAM: GYRANDA L149**  
 GLENAAN S181

**Notes:** A medium framed standout carcass bull. Long in the body and with a lovely tight sheath, this A.I. calf by Rosevale Maverick is by a dam - Gyranda L149 - who has delivered five calves for a perfect record. Her dam was a Glenaan cow that had nine calves in ten years.

**Dam:** C.I. 368 days

**Morphology:** 90%

**Wt** \_\_\_\_\_

**Sc** \_\_\_\_\_

\$

<b>GROWTH</b>	<b>200D</b>	+15	72%
	<b>400D</b>	+22	70%
	<b>600D</b>	+36	72%
	<b>MWT</b>	+27	66%
	<b>MILK</b>	+3	54%
<b>FERTILITY</b>	<b>SS</b>	+1.8	71%
	<b>DTC</b>	-10.2	56%
<b>CARCASS</b>	<b>EMA</b>	+1.7	55%
	<b>RIB</b>	+0.8	62%
	<b>RUMP</b>	+0.9	61%
	<b>RBV</b>	+0.9	50%
	<b>IMF</b>	-0.1	61%
<b>\$ INDEX</b>	<b>PNS</b>	+4.5	49%
	<b>Flight Time</b>	+0.36	69%
<b>\$ INDEX</b>	<b>DOM</b>	+28	
	<b>EXP</b>	+44	





# GYRANDA R560

**PUREBRED**

GYR20MR560  
25/09/2019 (22 mths)

ROSEVALE BATTALLION E622 (P)

**SIRE: ROWANLEA KLUGER K32 (P)**

ROWANLEA E31 (P)

GYRANDA CESAR C422 (PS)

**DAM: GYRANDA JAWON J183**

GYRANDA X345

**Notes:** A large framed and quiet Kluger calf with a great combination of growth, fertility and carcase data. Unfortunately he missed the classification muster so has missed an 'S' for no reason other than being late... Dam Gyranda Jawon J183 has had seven calves in six years including a set of twins. Her last two calves sold to Beauchamps for \$5000 and a paddock bull to Rodney Rideout.

Dam: C.I. 363 days

Morphology: 90%

Wt \_\_\_\_\_

Sc \_\_\_\_\_

\$

GROWTH	200D	+15	65%
	400D	+28	64%
	600D	+38	65%
	MWT	+55	61%
	MILK	+1	54%
FERTILITY	SS	+1.7	59%
	DTC	-2.4	55%
CARCASE	EMA	+2.3	52%
	RIB	-0.8	57%
	RUMP	-1.3	56%
	RBV	+0.5	46%
	IMF	+0.2	53%
	PNS	+3.7	42%
	Flight Time	+0.07	68%
\$ INDEX	DOM	+22	
	EXP	+30	



# GYRANDA R338 (PS)

**PUREBRED**

GYR20MR338  
11/09/2019 (22 mths)

EIDSVOLD STATION A166 (PS)

**SIRE: GYRANDA FOR REAL F136 (PS)**

GYRANDA CALAMITY C113

ROSEVALE NODDY A18 (P)

**DAM: GYRANDA H285**

GYRANDA C219

**Notes:** Tall, dark and Handsome. A quiet bull with plenty of frame and a good sheath. His Dam - Gyranda H285 maintains a perfect calving record, having just weaned her eighth calf. Her last bull calf sold to the Cruickshank family for \$12,000. Her dam - Gyranda C219 - weaned nine calves in nine years.

Dam: C.I. 369 days

Morphology: 91%

Wt \_\_\_\_\_

Sc \_\_\_\_\_

\$



GROWTH	200D	+12	68%
	400D	+18	69%
	600D	+29	70%
	MWT	+58	65%
	MILK	-4	57%
FERTILITY	SS	-0.8	71%
	DTC	+0.3	57%
CARCASE	EMA	+1.7	55%
	RIB	+0.5	61%
	RUMP	+0.8	61%
	RBV	+0.8	50%
	IMF	-0.2	59%
	PNS	-1	51%
	Flight Time	+0.28	69%
\$ INDEX	DOM	+16	
	EXP	+24	



# GYRANDA R314 (PS)

**PUREBRED**

GYR20MR314  
20/08/2019 (23 mths)



**LOT 49.**

GLEN RUFUS PARK JULIAN J1083

**SIRE: CATHNAL UPTON 92 (P)**

CATHNALO CATHNAL PENNY 181

**DAM: GYRANDA X3X4291**

**Notes:** A very impressive young bull. Long , deep, with a slick coat and excellent sheath. His commercial Dam is the only reason that this bull wasn't put up for classification.

Dam: C.I. N/A

Morphology: 88%

Wt \_\_\_\_\_

Sc \_\_\_\_\_

\$

GROWTH	200D	+18	59%
	400D	+25	60%
	600D	+39	62%
	MWT	+46	53%
	MILK	+	%
FERTILITY	SS	+1.3	65%
	DTC	-2.6	35%
CARCASE	EMA	+3.6	41%
	RIB	+1.5	50%
	RUMP	+1.6	48%
	RBV	+0.4	36%
	IMF	+0.6	50%
PNS	Flight Time	+0.17	62%
\$ INDEX	DOM	+22	
	EXP	+32	



# GYRANDA RASPUTIN R208 (PP)

'S' BULL

GYR20MR208

23/08/2019 (23 mths)



**LOT 50.**

ROWANLEA DUNTRON D24 (PS)

**SIRE: GYRANDA LIGNUM L164 (P)**

GYRANDA E177

GYRANDA KENNY K592 (PS)

**DAM: GYRANDA N489 (PP)**

GYRANDA G555 (P)



**Notes:** A lovely, quiet, Homozygous poll bull with clean lines and a slick coat. 90% morphology and excellent fertility data. His Dam - Gyranda N489 (PP) was pregnant as a yearling but failed to wean a calf. She has successfully weaned two since and is pregnant again. Her Dam D293 calved at two and weaned ten calves in eleven years.

**Dam:** C.I. 445 days

**Morphology:** 90%

Wt \_\_\_\_\_

Sc \_\_\_\_\_

\$

GROWTH	200D	+13	64%
	400D	+20	63%
	600D	+26	64%
	MWT	+29	59%
	MILK	-3	49%
FERTILITY	SS	+2.9	63%
	DTC	-4.9	51%
CARCASE	EMA	+2.5	50%
	RIB	-0.5	55%
	RUMP	-1.1	54%
	RBV	+1.2	43%
	IMF	-0.2	54%
FLIGHT TIME	PNS	-3.1	36%
	Flight Time	+0.43	65%
\$ INDEX	DOM	+25	
	EXP	+31	



# GYRANDA R308 (P)

'S' BULL

GYR20MR308

5/09/2019 (22 mths)



**LOT 51.**

ROSEVALE DEMOCRAT G268 (P)

**SIRE: GYRANDA KIT K154 (P)**

GYRANDA A635 (P)

GYRANDA GAMBLE G680 (P)

**DAM: GYRANDA K803 (PS)**

GYRANDA F789 (P)

**Notes:** A stylish bull with an eye-catching topline and sirey outlook. A well muscled bull and the EMA data to back up what you see. His Dam calved at two and has had five calves in six years.

**Dam:** C.I. 479 days

**Morphology:** 70%

**Wt** \_\_\_\_\_

**Sc** \_\_\_\_\_

\$

GROWTH	200D	+14	67%
	400D	+20	68%
	600D	+26	70%
	MWT	+29	63%
	MILK	-2	49%
FERTILITY	SS	+1.5	69%
	DTC	+2.2	53%
CARCASE	EMA	+3.2	52%
	RIB	+0.3	60%
	RUMP	+0	59%
	RBV	+1	47%
	IMF	-0.1	58%
\$ INDEX	PNS	+1.1	43%
	Flight Time	+0.06	69%
\$ INDEX	DOM	+18	
	EXP	+17	



# GYRANDA R182

'S' BULL

GYR20MR182

17/09/2019 (22 mths)

ROSEVALE BATTALLION E622 (P)

**SIRE: ROWANLEA KLUGER K32 (P)**

ROWANLEA E31 (P)

ROSEVALE DEMOCRAT G268 (P)

**DAM: GYRANDA L365 (P)**

GYRANDA D169

**Notes:** A big framed, growthy bull with a fine sheath. Growth data in the top 5% of the breed and , typical of the Kluger line, a gentle giant. Dam - Gyranda L365 (P) calved at two and has had four calves in five years.

Dam: C.I. 486 days

Morphology: 56%

Wt \_\_\_\_\_

Sc \_\_\_\_\_

\$

GROWTH	200D	+23	67%
	400D	+37	68%
	600D	+50	69%
	MWT	+91	63%
	MILK	-2	52%
FERTILITY	SS	+0.5	69%
	DTC	+3	54%
CARCASE	EMA	+2.3	54%
	RIB	-1.4	60%
	RUMP	-1.8	60%
	RBY	+0.5	49%
	IMF	+0.1	59%
	PNS	+3.2	39%
	Flight Time	+0.1	68%
\$ INDEX	DOM	+22	
	EXP	+29	





# GYRANDA R424 (P)

'S' BULL

GYR20MR424

9/09/2019 (22 mths)



**LOT 53.**

DANGARFIELD PENROSE P194 (P)

**SIRE: GYRANDA MOBY DICK M224 (P)**

GYRANDA F249 (P)

GYRANDA FOR REAL F136 (PS)

**DAM: GYRANDA LULU L545 (P)**

GYRANDA E369

**Notes:** A stylish poll bull, lighter in colour, carrying plenty of growth and a morphology result of 97%. Another very good carcass bull by Gyranda Moby dick M224 (P). Dam - Gyranda Lulu L545 (P) - is painfully quiet and has calved out four times in five years.

**Dam:** C.I. 477 days

**Morphology:** 97%

**Wt** \_\_\_\_\_

**Sc** \_\_\_\_\_

\$

GROWTH	200D	+18	66%
	400D	+29	66%
	600D	+36	68%
	MWT	+47	61%
	MILK	-4	48%
FERTILITY	SS	+1.5	68%
	DTC	+1.4	50%
CARCASS	EMA	+2.6	52%
	RIB	+1.4	59%
	RUMP	+1.6	58%
	RBV	+0.1	46%
	IMF	+0.1	57%
\$ INDEX	PNS	+1.1	41%
	Flight Time	+0.31	68%
\$ INDEX	DOM	+20	
	EXP	+22	



# GYRANDA R234

'S' BULL

GYR20MR234

28/08/2019 (23 mths)

EIDSVOLD STATION A166 (PS)

**SIRE: GYRANDA FOR REAL F136 (PS)**

GYRANDA CALAMITY C113

GYRANDA EDITOR E572

**DAM: GYRANDA K281**

GYRANDA E481

**Notes:** An eye appealing long bull with plenty of frame and a good sheath. Very quiet and sleek coated. Dam Gyranda K281 calved at two and has weaned five calves in six years. Her Dam Gyranda E481 had nine calves in nine years before being culled last year.

Dam: C.I. 459 days

Morphology: 90%

Wt \_\_\_\_\_

Sc \_\_\_\_\_

\$

GROWTH	200D	+19	68%
	400D	+33	69%
	600D	+49	70%
	MWT	+66	65%
	MILK	-3	57%
FERTILITY	SS	+1.3	71%
	DTC	-2.4	58%
CARCASE	EMA	+3.6	55%
	RIB	+0	61%
	RUMP	-0.1	61%
	RBV	+0.8	50%
	IMF	+0.2	59%
	PNS	-1.3	50%
	Flight Time	+0.14	69%
\$ INDEX	DOM	+28	
	EXP	+40	





# GYRANDA R392 (P)

'S' BULL

GYR20MR392

16/09/2019 (22 mths)



**LOT 55.**

GYRANDA FRANKLIN F238 (P)

**SIRE: GYRANDA MULGA BILL M482 (P)**

GYRANDA Z131

EIDSVOLD STATION FLETCH F24

**DAM: GYRANDA K617**

GYRANDA F579



**Notes:** A big framed, upstanding poll bull with some of the highest growth data in the breed. He is long, has plenty of carcase and is by low birthweight sire Mulga Bill M482. Dam - Gyranda K617 - calved at three but has had five calves in five years since. Her Dam F579 also calved at three and weaned 9/9.

**Dam:** C.I. 379 days

**Morphology:** 70%

Wt \_\_\_\_\_

Sc \_\_\_\_\_

\$

GROWTH	200D	+23	66%
	400D	+36	67%
	600D	+57	68%
	MWT	+87	62%
	MILK	+2	48%
FERTILITY	SS	+2.1	69%
	DTC	-0.5	49%
CARCASE	EMA	+2.7	51%
	RIB	-0.8	58%
	RUMP	-1.2	57%
	RBV	+0.6	45%
	IMF	+0.1	57%
\$ INDEX	PNS	+3.1	39%
	Flight Time	+0.4	68%
\$ INDEX	DOM	+25	
	EXP	+39	





# GYRANDA R504

'S' BULL

GYR20MR504

4/10/2019 (21 mths)

ROSEVALE KING K88

**SIRE: CREE NIAGARA N040 (PS)**

CREE F083

ROSEVALE NODDY A18 (P)

**DAM: GYRANDA H261 (P)**

GYRANDA C367 (P)

**Notes:** A slick coated Cree Niagara calf, lighter in colour with plenty of room to grow. Dam H261 (P) calved at three and delivered six calves in six years. Her Dam C367 had a perfect record, weaning 11/11.

Dam: C.I. 380 days

Morphology: 93%

Wt \_\_\_\_\_

Sc \_\_\_\_\_

\$

GROWTH	200D	+13	66%
	400D	+21	66%
	600D	+24	68%
	MWT	+44	62%
	MILK	+0	50%
FERTILITY	SS	+1.4	68%
	DTC	+0.6	51%
CARCASE	EMA	+1.7	52%
	RIB	-0.7	59%
	RUMP	-1.4	58%
	RBY	+1.4	47%
	IMF	-0.3	58%
PNS	PNS	-1	41%
	Flight Time	+0.16	60%
\$ INDEX	DOM	+20	
	EXP	+21	



# GYRANDA R264

'S' BULL

GYR20MR264

14/09/2019 (22 mths)

EIDSVOLD STATION A166 (PS)

**SIRE: GYRANDA FOR REAL F136 (PS)**

GYRANDA CALAMITY C113

GYRANDA ENIGMA E124

**DAM: GYRANDA K285**

GYRANDA Caramel C431



**Notes:** This is a lovely quiet, horned bull. Square in the body, slick in the coat - which is a little lighter in colour - and plenty of loose skin. a good combination of growth and fertility EBVs with fat data in the top 10% of the breed. Dam K285 calved at two and has weaned five calves in six years.

Dam: C.I. 480 days

Morphology: 78%

Wt \_\_\_\_\_

Sc \_\_\_\_\_

\$

GROWTH	200D	+15	69%
	400D	+19	70%
	600D	+29	71%
	MWT	+45	67%
	MILK	-3	59%
FERTILITY	SS	+1.2	72%
	DTC	-3.7	60%
CARCASE	EMA	+2.9	56%
	RIB	+1.1	63%
	RUMP	+1.2	62%
	RBY	+0.7	51%
	IMF	+0.3	60%
PNS	PNS	-0.4	51%
	Flight Time	+0.21	70%
\$ INDEX	DOM	+21	
	EXP	+30	



# GYRANDA R524

'S' BULL

GYR20MR524

10/09/2019 (22 mths)



**LOT 58.**

ROSEVALE DEMOCRAT G268 (P)

**SIRE: GYRANDA MONTO M272 (P)**

GYRANDA D549

GYRANDA HOSEA H286 (PS)

**DAM: GYRANDA L787**

GYRANDA J605 (P)

**Notes:** A lighter coloured horned bull. Square across the top with a tidy sheath. Extraordinary carcass data : Both muscle (EMA) and fat in the top 1% of the breed. Dam - Gyranda L787 - calved at two and has weaned 5/5.

**Dam:** C.I. 366 days

**Morphology:** 84%

Wt \_\_\_\_\_

Sc \_\_\_\_\_

\$

GROWTH	200D	+19	68%
	400D	+15	68%
	600D	+29	70%
	MWT	+35	64%
	MILK	-2	51%
FERTILITY	SS	+1.3	70%
	DTC	-2.6	52%
CARCASS	EMA	+5.3	54%
	RIB	+2.7	61%
	RUMP	+2.9	60%
	RBV	+0.9	48%
	IMF	-0.1	60%
PNS	PNS	+0.1	37%
	Flight Time	+0	63%
\$ INDEX	DOM	+20	
	EXP	+29	



# GYRANDA R646 (P)

'S' BULL

GYR20MR646

8/11/2019 (20 mths)

ROWANLEA DUNTRON D24 (PS)

**SIRE: GYRANDA LIGNUM L164 (P)**

GYRANDA E177

GYRANDA FOR REAL F136 (PS)

**DAM: GYRANDA N415**

GYRANDA C213

**Notes:** A lighter coloured poll bull with a slick coat, good sheath and a great temperament. Fertility data is exceptional and 89% morphology backs it up. So too does the fact that his Dam - Gyranda N415 has weaned 3/3 so far and her Dam C213 weaned 12/12.

Dam: C.I. 397 days

Morphology: 89%

Wt \_\_\_\_\_

Sc \_\_\_\_\_

\$ \_\_\_\_\_

GROWTH	200D	+7	65%
	400D	+24	65%
	600D	+28	67%
	MWT	+34	60%
	MILK	-1	47%
FERTILITY	SS	+3.3	68%
	DTC	-10	50%
CARCASE	EMA	+2.1	51%
	RIB	-0.4	58%
	RUMP	-0.9	57%
	RBV	+1	46%
	IMF	+0.1	57%
	PNS	-3	38%
	Flight Time	+0.6	66%
\$ INDEX	DOM	+31	
	EXP	+41	





# GYRANDA R612 (P)

'S' BULL

GYR20MR612

30/10/2019 (21 mths)



**LOT 60.**

ROSEVALE DEMOCRAT G268 (P)

**SIRE: GYRANDA MONTO M272 (P)**

GYRANDA D549

GYRANDA FENWICK F582 (P)

**DAM: GYRANDA L193 (P)**

GYRANDA H373 (P)

**Notes:** A lovely long, poll bull with loose skin, a deep flank and a well defined hindquarter. Here is another bull with extraordinary carcass data that we are beginning to accept as normal here at Gyranda - when traditionally it has been far from it. EMA data in the top 5% of the breed combined with fat data in the top 15%. Meld that with excellent growth and fertility and you have a real all rounder. Dam - Gyranda L193 (P) calved at two and has weaned five calves in five years. Her dam - H373 - has weaned 8/8 so far.

**Dam:** C.I. 364 days

**Morphology:** 79%

**Wt** \_\_\_\_\_

**Sc** \_\_\_\_\_

\$

GROWTH	200D	+20	67%
	400D	+22	67%
	600D	+34	69%
	MWT	+46	63%
	MILK	-1	50%
FERTILITY	SS	+2.2	69%
	DTC	-5	50%
CARCASS	EMA	+4.6	53%
	RIB	+1.1	60%
	RUMP	+0.9	59%
	RBV	+1	47%
	IMF	+0	58%
\$ INDEX	PNS	-0.2	37%
	Flight Time	+0.01	68%
\$ INDEX	DOM	+26	
	EXP	+37	



# GYRANDA R106 (P)(AI)

'S' BULL

GYR20MR106

1/09/2019 (22 mths)

## SIRE: ROSEVALE MAJESTIC M176 (P)

ROSEVALE ESTELLE J331 (P)

GYRANDA DEADLY D178 (PS)

## DAM: GYRANDA J217 (P)

GLENAAN S180

**Notes:** A powerful, dark poll bull with a tight sheath, clean coat & exceptional carcass. An A.I. calf by Rosevale Majestic it is difficult to find any weakness in his data at all. At 32 kg a lower birthweight calf but progressing to have growth & fat data in the top 5% of the breed, EMA in the top 10% & fertility data in the top 25% of the breed. Interestingly this bull is a twin. His twin sister is a freemartin but their dam - Gyranda J217 - raised both calves. She calved at two & had seven calves in eight years, including a bull calf sold last year to Wilf Edwards for \$8000. Her dam - Glenaan S180 - had six calves in six years.

Dam: C.I. 364 days

Morphology: 78%

Wt \_\_\_\_\_

Sc \_\_\_\_\_

\$

GROWTH	200D	+20	65%
	400D	+35	65%
	600D	+47	66%
	MWT	+57	62%
	MILK	-3	53%
FERTILITY	SS	+1.7	60%
	DTC	-5.3	54%
CARCASS	EMA	+3.9	51%
	RIB	+2	56%
	RUMP	+2	55%
	RBV	+0.3	45%
	IMF	+0.1	53%
	PNS	+2.9	48%
	Flight Time	+0.1	69%
\$ INDEX	DOM	+32	
	EXP	+43	





# GYRANDA R250 (PP)

'S' BULL

GYR20MR250

20/09/2019 (22 mths)



**LOT 62.**

EIDSVOLD STATION A166 (PS)

**SIRE: GYRANDA FOR REAL F136 (PS)**

GYRANDA CALAMITY C113

GREENUP GIZZA G218 (P)

**DAM: GYRANDA L135 (P)**

GYRANDA E541 (P)



**Notes:** A tall, homozygous poll bull with beautiful lines and a clean, dark coat. Another powerful combination of growth and fertility EBVs. Dam Gyranda L135 calved at three and has weaned four from four. Her dam E541 calved at two before weaning 10/10.

**Dam:** C.I. 373 days

**Morphology:** 90%

**Wt** \_\_\_\_\_

**Sc** \_\_\_\_\_

\$

GROWTH	200D	+16	67%
	400D	+25	68%
	600D	+37	69%
	MWT	+57	65%
	MILK	-7	56%
FERTILITY	SS	+3	70%
	DTC	-6.5	57%
CARCASE	EMA	+1.9	54%
	RIB	+0.8	61%
	RUMP	+0.5	60%
	RBV	+0.5	49%
	IMF	+0.2	59%
\$ INDEX	PNS	-3.3	49%
	Flight Time	+0.11	68%
\$ INDEX	DOM	+26	
	EXP	+40	



# GYRANDA R164 (PP)

'S' BULL

GYR20MR164

17/09/2019 (22 mths)



**LOT 63.**

WARENDA D696 (P)

**SIRE: GYRANDA LONGSHOT L110(P)(AI)**

GYRANDA H663

GYRANDA FOR REAL F136 (PS)

**DAM: GYRANDA POCAHONTAS P551(P)**

GYRANDA K131 (P)



**Notes:** Tremendous muscling throughout this bull. A quiet, homozygous poll with clean lines, a tidy sheath and a curve-bending combination of low birthweight and high growth. With EMA data in the top 1% of the breed and growth up there as well he is sure to deliver commercial kilos of beef to your herd. Dam Gyranda Pocahontas P551 (P) was a show heifer led by Christopher at the 2019 Junior Show. She calved at two, has had two calves and is pregnant again.

**Dam:** C.I. 434 days

**Morphology:** 79%

**Wt** \_\_\_\_\_

**Sc** \_\_\_\_\_

\$

GROWTH	200D	+20	64%
	400D	+29	64%
	600D	+45	65%
	MWT	+52	59%
	MILK	-1	47%
FERTILITY	SS	+1.2	66%
	DTC	+8.1	51%
CARCASE	EMA	+5.8	51%
	RIB	+0.2	57%
	RUMP	-0.2	56%
	RBV	+1.8	45%
	IMF	-0.4	57%
\$ INDEX	PNS	+0.3	41%
	Flight Time	+0.15	68%
\$ INDEX	DOM	+23	
	EXP	+22	



# GYRANDA R502 (PP)

'S' BULL

GYR20MR502

16/09/2019 (22 mths)



**LOT 64.**

ROSEVALE BATTALLION E622 (P)  
**SIRE: ROWANLEA KLUGER K32 (P)**  
 ROWANLEA E31 (P)  
 GREENUP GIZZA G218 (P)  
**DAM: GYRANDA M239 (P)**  
 GYRANDA G829 (P)



**Notes:** A big, long, homozygous poll bull. Exceptionally quiet and carrying an amazing combination of growth and fertility. Fat, flight time and IMF also in the top 5% of the breed. Dam M239 (P) is a young cow with a perfect calving record, weaning four to date.

**Dam:** C.I. 368 days

**Morphology:** 86%

Wt \_\_\_\_\_

Sc \_\_\_\_\_

\$

GROWTH	200D	+14	67%
	400D	+28	68%
	600D	+38	70%
	MWT	+57	64%
	MILK	+1	54%
FERTILITY	SS	+2.5	70%
	DTC	-12.6	55%
CARCASE	EMA	+2.4	54%
	RIB	+1.3	61%
	RUMP	+1.1	60%
	RBV	+0.3	49%
	IMF	+0.6	60%
FLIGHT TIME	PNS	+3.4	39%
	Flight Time	+0.23	63%
\$ INDEX	DOM	+31	
	EXP	+50	





## GYRANDA R682 (P)

'S' BULL

GYR20MR682

1/11/2019 (20 mths)

ROSEVALE DOWNPOUR K6 (PS)

**SIRE: WIGHTFIELDS NESS N65 (PP)**

WIGHTFIELDS LISSIE F130

GYRANDA FOR REAL F136 (PS)

**DAM: GYRANDA J351**

GYRANDA V285

**Notes:** A deep bodied, lighter coloured bull with excellent sheath and well defined hindquarter. He carries a powerful combination of growth, fertility and carcass EBV data. Dam Gyranda J351 calved at three but has weaned six calves in six years. Her dam V285 weaned 12/12, including a \$16,000 bull sold to the Cowpers in 2010.

Dam: C.I. 369 days

Morphology: 69%

Wt \_\_\_\_\_

Sc \_\_\_\_\_

\$

GROWTH	200D	+13	65%
	400D	+23	66%
	600D	+37	67%
	MWT	+52	60%
	MILK	-4	45%
FERTILITY	SS	+1.6	68%
	DTC	-8.4	48%
CARCASS	EMA	+2.5	50%
	RIB	+1.2	57%
	RUMP	+1.2	56%
	RBY	+0.5	45%
	IMF	+0.2	57%
PNS	PNS	+	%
	Flight Time	+0.07	64%
\$ INDEX	DOM	+26	
	EXP	+43	



## GYRANDA R584

'S' BULL

GYR20MR584

5/11/2019 (20 mths)

ROSEVALE BATTALLION E622 (P)

**SIRE: ROWANLEA KLUGER K32 (P)**

ROWANLEA E31 (P)

TYNDALE REPLAY 167 (AI) (P)

**DAM: GYRANDA F461 (P)**

GYRANDA B461

**Notes:** A lovely coat, lighter in colour. Long and quiet with massive growth data typical of the Rowanlea Kluger line. This bull also carries excellent marbling data for IMF. His Dam - Gyranda F461 (P) - weaned eight calves in nine years with her last bull calf sold last year to Blue Luke for \$18,000.

Dam: C.I. 418 days

Morphology: 78%

Wt \_\_\_\_\_

Sc \_\_\_\_\_

\$

GROWTH	200D	+14	69%
	400D	+21	69%
	600D	+35	71%
	MWT	+45	65%
	MILK	+2	53%
FERTILITY	SS	+0.3	71%
	DTC	-0.1	56%
CARCASS	EMA	+1.8	55%
	RIB	+0	62%
	RUMP	-0.3	61%
	RBY	+0.3	50%
	IMF	+0.2	60%
PNS	PNS	+5.1	42%
	Flight Time	+0.27	70%
\$ INDEX	DOM	+14	
	EXP	+23	



# GYRANDA R240 (PS)

'S' BULL

GYR20MR240

26/09/2019 (22 mths)

EIDSVOLD STATION A166 (PS)

**SIRE: GYRANDA FOR REAL F136 (PS)**

GYRANDA CALAMITY C113

GYRANDA CESAR C422 (PS)

**DAM: GYRANDA L515**

GYRANDA FLAME Y625



**Notes:** This bull has a tremendous hindquarter, carrying loads of muscle from tip to toe. A powerful combination of growth and fertility, with good carcass EBVs to balance out. Dam Gyranda L515 calved at two and has weaned five calves in five years. Her Dam - Gyranda Flame Y625 weaned 10 calves in eleven years.

Dam: C.I. 349 days

Morphology: 76%

Wt \_\_\_\_\_

Sc \_\_\_\_\_

\$

GROWTH	200D	+16	68%
	400D	+22	68%
	600D	+35	70%
	MWT	+59	65%
	MILK	-2	56%
FERTILITY	SS	+1.3	70%
	DTC	-3.1	57%
CARCASS	EMA	+2.5	55%
	RIB	+0.2	61%
	RUMP	+0.3	61%
	RBV	+0.5	50%
	IMF	+0	59%
	PNS	+2.5	50%
	Flight Time	+0.1	68%
\$ INDEX	DOM	+20	
	EXP	+32	



# GYRANDA R270 (P)

'S' BULL

GYR20MR270

11/09/2019 (22 mths)

ROSEVALE BATTALLION E622 (P)

**SIRE: ROWANLEA KLUGER K32 (P)**

ROWANLEA E31 (P)

ROSEVALE BRIGADIER B422 (P)

**DAM: GYRANDA E613 (P)**

GYRANDA C245

**Notes:** A tremendous loin on this calf. Growthy, patient and burdened with beef! Quiet and carrying IMF data in the top 10% of the breed. Dam E613 (P) died last year after weaning her ninth calf in ten years.

Dam: C.I. 408 days

Morphology: 78%

Wt \_\_\_\_\_

Sc \_\_\_\_\_

\$

GROWTH	200D	+13	68%
	400D	+21	69%
	600D	+26	71%
	MWT	+43	65%
	MILK	+1	56%
FERTILITY	SS	+0.3	71%
	DTC	-2.6	57%
CARCASS	EMA	+2.1	55%
	RIB	+0.1	62%
	RUMP	-0.2	61%
	RBV	+0.6	50%
	IMF	+0.3	60%
	PNS	+4.2	42%
	Flight Time	+0.15	70%
\$ INDEX	DOM	+19	
	EXP	+24	



# GYRANDA R652

'S' BULL

GYR20MR652

12/10/2019 (21 mths)

ROSEVALE DEMOCRAT G268 (P)

**SIRE: GYRANDA MONTO M272 (P)**

GYRANDA D549

GYRANDA HARVARD H394

**DAM: GYRANDA L349**

GYRANDA A529

**Notes:** A well put together bull with a dark coat and good sheath. Dam L349 calved at two and has weaned five calves in five years. Her dam A529 weaned 11/11.

Dam: C.I. 361 days

Morphology: 93%

Wt \_\_\_\_\_

Sc \_\_\_\_\_

\$

GROWTH	200D	+13	67%
	400D	+14	68%
	600D	+18	70%
	MWT	+29	64%
	MILK	+0	52%
FERTILITY	SS	+1.6	69%
	DTC	-2.5	53%
CARCASE	EMA	+3.3	54%
	RIB	+0.3	61%
	RUMP	-0.2	60%
	RBY	+0.6	49%
	IMF	+0.1	60%
	PNS	-4.4	37%
	Flight Time	-0.15	69%
\$ INDEX	DOM	+15	
	EXP	+20	



Dan Joyce, Louise Joyce, Nikki Mahony, Hayley Webster, Jo Joyce



# GYRANDA RUSTY R654 (P)

'S' BULL

GYR20MR654

22/10/2019 (21 mths)



**LOT 70.**

TYNDALE REPLAY 167 (AI) (P)

**SIRE: GYRANDA GARFIELD G302 (P)**

GYRANDA Z131

ROWANLEA DUNTRON D24 (PS)

**DAM: GYRANDA G739 (P)**

GYRANDA C923

**Notes:** An early maturing bull, much younger than many of his contemporaries, with exceptional fertility, fat and IMF data. Dam G739 (P) is a Duntroon cow that calved at two and has weaned nine calves in nine years, including her last bull calf sold last year to Trevor Watson for \$16,000. Her Dam - Gyranda C923 weaned 10/10.

**Dam:** C.I. 363 days

**Morphology:** 96%

**Wt** \_\_\_\_\_

**Sc** \_\_\_\_\_

\$

GROWTH	200D	-1	67%
	400D	+2	68%
	600D	+9	67%
	MWT	-11	64%
	MILK	+3	57%
FERTILITY	SS	+3	71%
	DTC	-7.8	58%
CARCASE	EMA	+0.4	54%
	RIB	+2.2	58%
	RUMP	+1.8	57%
	RBV	-0.4	47%
	IMF	+0.4	54%
	PNS	-0.4	48%
	Flight Time	+0.11	69%
\$ INDEX	DOM	+8	
	EXP	+17	



# GYRANDA R684

'S' BULL

GYR20MR684

25/10/2019 (21 mths)



**LOT 71.**

ROSEVALE KING K88

**SIRE: CREE NIAGARA N040 (PS)**

CREE F083

GYRANDA GARWOOD G684 (PS)

**DAM: GYRANDA K431 (P)**

GYRANDA F493

**Notes:** This is a really thick younger bull with muscle all the way through from shoulder to loin, a tidy sheath and a slick coat. Growth and fertility data are both in the top 10% of the breed. Dam Gyranda K431 (P) has weaned four calves in five years.

**Dam:** C.I. 488 days

**Morphology:** 88%

**Wt** \_\_\_\_\_

**Sc** \_\_\_\_\_

\$

GROWTH	200D	+21	65%
	400D	+31	66%
	600D	+44	67%
	MWT	+48	60%
	MILK	+1	46%
FERTILITY	SS	+2.6	67%
	DTC	-4.4	49%
CARCASE	EMA	+3.6	50%
	RIB	-0.1	56%
	RUMP	-0.8	55%
	RBV	+0.9	44%
	IMF	-0.1	55%
	PNS	+0.1	38%
	Flight Time	+0.01	66%
\$ INDEX	DOM	+29	
	EXP	+39	

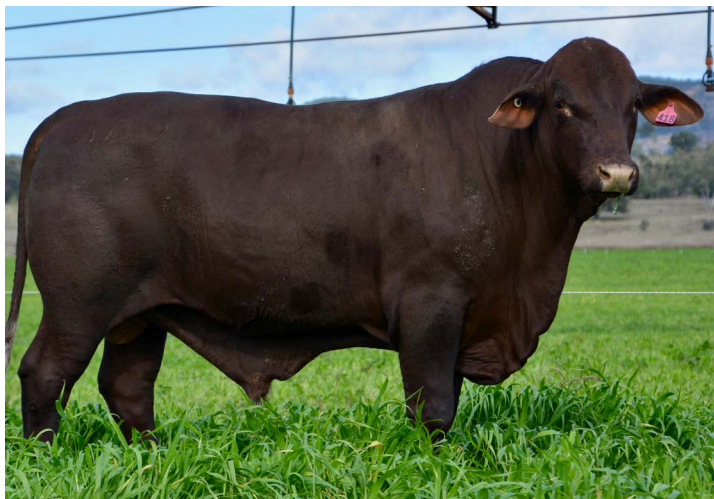


# GYRANDA R418 (P)

'S' BULL

GYR20MR418

23/09/2019 (22 mths)



**LOT 72.**

GYRANDA FRANKLIN F238 (P)

**SIRE: GYRANDA MULGA BILL M482 (P)**

GYRANDA Z131

GYRANDA GARWOOD G684 (PS)

**DAM: GYRANDA L339 (P)**

GYRANDA F911



**Notes:** A dark poll bull with plenty of frame and a great attitude. A tidy sheath and well proportioned. Dam Gyranda L339 (P) first calved at three and has weaned four calves in four years, including her first bull calf sold last year to Arrabury for \$14,000.

**Dam:** C.I. 354 days

**Morphology:** 74%

**Wt** \_\_\_\_\_

**Sc** \_\_\_\_\_

\$

GROWTH	200D	+10	67%
	400D	+21	67%
	600D	+31	69%
	MWT	+14	63%
	MILK	+2	47%
FERTILITY	SS	+2.9	69%
	DTC	-7.2	50%
CARCASE	EMA	+0.9	52%
	RIB	+1.1	59%
	RUMP	+0.6	58%
	RBV	-0.7	46%
	IMF	+0.6	57%
PNS	PNS	+1.1	40%
	Flight Time	-0.04	68%
\$ INDEX	DOM	+17	
	EXP	+28	



# GYRANDA R694 (P)

'S' BULL

GYR20MR694

18/10/2019 (21 mths)



**LOT 73.**

DANGARFIELD PENROSE P194 (P)

**SIRE: GYRANDA MOBY DICK M224 (P)**

GYRANDA F249 (P)

GYRANDA CESAR C422 (PS)

**DAM: GYRANDA L189**

GYRANDA B171

**Notes:** An appealing dark poll bull with amazing carcass. He is medium framed but carries all the meat you'd ever need. Dam Gyranda L189 has had five calves in five years.

**Dam:** C.I. 351 days

**Morphology:** 88%

**Wt** \_\_\_\_\_

**Sc** \_\_\_\_\_

\$

<b>GROWTH</b>	<b>200D</b>	+16	66%
	<b>400D</b>	+22	66%
	<b>600D</b>	+34	68%
	<b>MWT</b>	+30	62%
	<b>MILK</b>	+2	48%
<b>FERTILITY</b>	<b>SS</b>	+0.1	68%
	<b>DTC</b>	+0.9	50%
<b>CARCASS</b>	<b>EMA</b>	+3.9	52%
	<b>RIB</b>	+0.4	59%
	<b>RUMP</b>	+0.6	58%
	<b>RBV</b>	+0.9	46%
	<b>IMF</b>	-0.3	57%
<b>\$ INDEX</b>	<b>PNS</b>	+3.7	39%
	<b>Flight Time</b>	+0.31	67%
<b>\$ INDEX</b>	<b>DOM</b>	+19	
	<b>EXP</b>	+23	



# GYRANDA R112 (PP)

'S' BULL

GYR20MR112

1/09/2019 (22 mths)



**LOT 74.**

ROSEVALE DEMOCRAT G268 (P)

**SIRE: GYRANDA MONTO M272 (P)**

GYRANDA D549

GYRANDA CESAR C422 (PS)

**DAM: GYRANDA L165 (P)**

GYRANDA D363 (P)



**Notes:** A dark coated Homozygous poll bull with excellent muscle definition and a tidy sheath. Dam Gyranda L165 (P) is a Cesar cow that maintains a perfect record with five calves to date. Her last bull calf was sold to John Knights for \$16,000 last year. Her dam - D263 - calved out 5/5 before being found dead.

**Dam:** C.I. 381 days

**Morphology:** 83%

Wt \_\_\_\_\_

Sc \_\_\_\_\_

\$

GROWTH	200D	+19	65%
	400D	+27	66%
	600D	+35	66%
	MWT	+46	62%
	MILK	-1	52%
FERTILITY	SS	+2.7	69%
	DTC	+0.8	52%
CARCASE	EMA	+4.1	52%
	RIB	+1.2	57%
	RUMP	+1	56%
	RBV	+0.5	45%
	IMF	+0	54%
	PNS	+1	40%
	Flight Time	-0.1	68%
\$ INDEX	DOM	+21	
	EXP	+24	





# GYRANDA R346

'S' BULL

GYR20MR346

13/09/2019 (22 mths)

EIDSVOLD STATION A166 (PS)

**SIRE: GYRANDA FOR REAL F136 (PS)**

GYRANDA CALAMITY C113

GYRANDA GAUCHO G742

**DAM: GYRANDA K985**

SANTA GERTRUDIS MULTIPLE DAM



**Notes:** A slick coated long bull. Lighter in colour; a superb hindquarter and good sheath. This bull carries excellent EBV data for muscle and fats. His growth data isn't far off the top 10% of the breed and fertility is also substantially better than average. Dam - Gyranda K985 - calved at two and has weaned six calves in six years.

Dam: C.I. 368 days

Morphology: 88%

Wt \_\_\_\_\_

Sc \_\_\_\_\_

\$

GROWTH	200D	+15	68%
	400D	+25	69%
	600D	+35	70%
	MWT	+41	65%
	MILK	-4	55%
FERTILITY	SS	+1.8	71%
	DTC	-3.2	55%
CARCASE	EMA	+3.1	53%
	RIB	+0.8	61%
	RUMP	+0.6	60%
	RBV	+0.7	48%
	IMF	+0.2	59%
	PNS	+1.3	49%
	Flight Time	-0.02	69%
\$ INDEX	DOM	+25	
	EXP	+32	



# GYRANDA R460 (P)

'S' BULL

GYR20MR460

2/09/2019 (22 mths)

ROSEVALE DOWNPOUR K6 (PS)

**SIRE: WIGHTFIELDS NESS N65 (PP)**

WIGHTFIELDS LISSIE F130

ROSEVALE NODDY A18 (P)

**DAM: GYRANDA M437**

GYRANDA H399

**Notes:** A lighter coloured poll bull with a deep flank and tidy sheath. By new sire Wightfields Ness N65 (PP) he has excellent data throughout with growth, fertility and carcass at the pinnacle of the breed. Dam M437 calved at two and weaned three calves in four years. Her Dam - Gyranda H399 - has just weaned her eighth calf in eight years. Two of her previous three calves sold for \$12,000 each while this year's calf was a paddock bull.

Dam: C.I. 552 days

Morphology: 67%

Wt \_\_\_\_\_

Sc \_\_\_\_\_

\$

GROWTH	200D	+21	65%
	400D	+30	66%
	600D	+43	68%
	MWT	+63	61%
	MILK	+1	45%
FERTILITY	SS	+1.8	68%
	DTC	-3.3	49%
CARCASE	EMA	+4.2	51%
	RIB	+0.8	58%
	RUMP	+0.5	58%
	RBV	+1.3	46%
	IMF	-0.1	58%
	PNS	+	%
	Flight Time	+0.01	55%
\$ INDEX	DOM	+30	
	EXP	+40	



# GYRANDA R552 (PS)

'S' BULL

GYR20MR552

25/09/2019 (22 mths)

ROSEVALE DEMOCRAT G268 (P)

**SIRE: GYRANDA MONTO M272 (P)**

GYRANDA D549

GYRANDA GARFIELD G302 (P)

**DAM: GYRANDA K597 (P)**

GYRANDA F637

**Notes:** A dark coated poll bull, deep in the flank with a good sheath. Another Monto calf with great carcass data and muscle definition. Dam - Gyranda K597 (P) has weaned five calves in six years.

Dam: C.I. 450 days

Morphology: 80%

Wt \_\_\_\_\_

Sc \_\_\_\_\_

\$

GROWTH	200D	+13	67%
	400D	+11	67%
	600D	+24	69%
	MWT	+31	61%
	MILK	+1	50%
FERTILITY	SS	+1	69%
	DTC	-0.4	50%
CARCASS	EMA	+2.9	52%
	RIB	+1.7	60%
	RUMP	+1.5	59%
	RBY	+0.5	47%
	IMF	-0.2	58%
	PNS	-2.1	37%
	Flight Time	-0.18	69%
\$ INDEX	DOM	+11	
	EXP	+19	





# GYRANDA R410 (P)

'S' BULL

GYR20MR410

15/09/2019 (22 mths)



**LOT 78.**

GYRANDA FRANKLIN F238 (P)

**SIRE: GYRANDA MULGA BILL M482 (P)**

GYRANDA Z131

GYRANDA ASSASSIN A406

**DAM: GYRANDA F215**

GYRANDA Y503



**Notes:** A slick coat, plenty of frame and a good hindquarter. This high growth bull by low birthweight sire Gyranda Mulga Bill manages to combine power and presence with a 93% morphology and excellent fertility EBVs. Dam F215 has delivered nine calves in ten years.

**Dam:** C.I. 412 days

**Morphology:** 93%

Wt \_\_\_\_\_

Sc \_\_\_\_\_

\$

GROWTH	200D	+13	68%
	400D	+28	68%
	600D	+35	70%
	MWT	+42	63%
	MILK	+1	51%
FERTILITY	SS	+0.9	70%
	DTC	-5.7	53%
CARCASE	EMA	+2.6	53%
	RIB	-0.6	60%
	RUMP	-1	59%
	RBV	+0.4	47%
	IMF	+0.4	57%
FERTILITY	PNS	-1.7	43%
	Flight Time	+0.05	69%
\$ INDEX	DOM	+25	
	EXP	+34	



# GYRANDA R174 (P)

'S' BULL

GYR20MR174

28/09/2019 (22 mths)

WATASANTA FIDDLESTICKS 1504(P)

**SIRE: GYRANDA MUSTAFAR M576 (P)**

GYRANDA J359

GYRANDA HUMMER H274 (P)

**DAM: GYRANDA P561 (PS)**

GYRANDA D293



**Notes:** An eyecatching dark bull with real Sire appeal. Low birthweight, reasonable growth and a topline as good as they come. Dam Gyranda P561 (PS) is a young cow that calved this bull at two, has had another calf since and is pregnant again. Her Dam Gyranda D293 had ten calves in eleven years.

Dam: C.I. 437 days

Morphology: 86%

Wt \_\_\_\_\_

Sc \_\_\_\_\_

\$

GROWTH	200D	+11	68%
	400D	+19	66%
	600D	+28	69%
	MWT	+21	61%
	MILK	+3	46%
FERTILITY	SS	+3.4	68%
	DTC	-4.1	49%
CARCASE	EMA	+3	51%
	RIB	+0.2	58%
	RUMP	-0.7	57%
	RBY	+0.8	45%
	IMF	+0.2	57%
\$ INDEX	PNS	+2.5	37%
	Flight Time	+0.02	67%
\$ INDEX	DOM	+21	
	EXP	+28	



**Santa success at Callide Dawson Carcase Comp 2021**

- Peter & Nikki Mahony, Chris Holmes, Shaun McGuigan,

Kate & Andrew Chapman



# GYRANDA R454 (P)

'S' BULL

GYR20MR454

15/09/2019 (22 mths)



**LOT 80.**

ROSEVALE DOWNPOUR K6 (PS)

**SIRE: WIGHTFIELDS NESS N65 (PP)**

WIGHTFIELDS LISSIE F130

GYRANDA EDITOR E572

**DAM: GYRANDA M431**

GYRANDA C305 (CULL)

**Notes:** An exceptionally quiet, lighter coloured poll bull with a tidy sheath and excellent muscle definition. By new sire Wightfields Ness N65 (PP) this bull has balanced data with few weaknesses. In the top echelon of the breed for growth, fertility, muscle, fat and marbling he is real sire potential. Dam Gyranda M431 has weaned three calves in four years.

**Dam:** C.I. 330 days

**Morphology:** 84%

**Wt** \_\_\_\_\_

**Sc** \_\_\_\_\_

\$

GROWTH	200D	+18	65%
	400D	+29	66%
	600D	+39	68%
	MWT	+58	62%
	MILK	-6	45%
FERTILITY	SS	+2.8	68%
	DTC	-6.1	48%
CARCASE	EMA	+5.1	51%
	RIB	+1	58%
	RUMP	+0.9	57%
	RBV	+1.4	45%
	IMF	+0.1	57%
\$ INDEX	PNS	+	%
	Flight Time	+0.15	55%
\$ INDEX	DOM	+35	
	EXP	+45	



# GYRANDA R118 (P)

'S' BULL

GYR20MR118

4/09/2019 (22 mths)

ROWANLEA DUNTRON D24 (PS)

**SIRE: GYRANDA LIGNUM L164 (P)**

GYRANDA E177

GYRANDA EDITOR E572

**DAM: GYRANDA N375**

GYRANDA C613



**Notes:** Tall, long and carrying a noble poll head. This lighter coloured bull combines growth, fertility and temperament perfectly. His Dam - Gyranda N375 - is a young cow with three calves on the ground. Her first was a bull calf sold last year to Greg Pressey for \$10,500. Her dam - C613 - weaned 10 calves in 10 years.

Dam: C.I. 387 days

Morphology: 73%

Wt \_\_\_\_\_

Sc \_\_\_\_\_

\$

GROWTH	200D	+12	68%
	400D	+23	67%
	600D	+31	70%
	MWT	+46	61%
	MILK	+1	48%
FERTILITY	SS	+3.4	69%
	DTC	-8.9	51%
CARCASE	EMA	+1	52%
	RIB	+0.3	59%
	RUMP	-0.1	58%
	RBV	+0.4	47%
	IMF	+0.3	59%
PNS	PNS	-1.9	38%
	Flight Time	+0.63	67%
\$ INDEX	DOM	+24	
	EXP	+38	



# GYRANDA R252 (P)

'S' BULL

GYR20MR252

9/09/2019 (22 mths)

GYRANDA GARFIELD G302 (P)

**SIRE: GYRANDA KALVIN K582 (P)**

GYRANDA C735 (P)

ROWANLEA HARRISON H74

**DAM: GYRANDA L299 (P)**

GYRANDA D513 (P)

**Notes:** A polley bull with a tight underline and a lovely dark coat. Dam Gyranda L299 (P) calved late in life but has weaned three calves in three years.

Dam: C.I. 355 days

Morphology: 88%

Wt \_\_\_\_\_

Sc \_\_\_\_\_

\$

GROWTH	200D	+9	64%
	400D	+10	66%
	600D	+25	68%
	MWT	+28	61%
	MILK	+1	43%
FERTILITY	SS	+1.1	67%
	DTC	+3.9	49%
CARCASE	EMA	+2.6	51%
	RIB	+0.6	58%
	RUMP	+0	57%
	RBV	+1	45%
	IMF	-0.5	55%
PNS	PNS	+2.4	40%
	Flight Time	-0.04	66%
\$ INDEX	DOM	+9	
	EXP	+13	



# GYRANDA R706

'S' BULL

GYR20MR706

5/11/2019 (20 mths)

ROSEVALE BATTALLION E622 (P)

**SIRE: ROWANLEA KLUGER K32 (P)**

ROWANLEA E31 (P)

ROSEVALE NODDY A18 (P)

**DAM: GYRANDA M661 (P)**

GYRANDA C557

**Notes:** A much younger bull with tremendous length, a tidy sheath, good growth and temperament data at the top of the tree. Dam M661 (P) has weaned three calves in four years.

Dam: C.I. 679 days

Morphology: 93%

Wt \_\_\_\_\_

Sc \_\_\_\_\_

\$

GROWTH	200D	+15	66%
	400D	+21	66%
	600D	+31	67%
	MWT	+57	62%
	MILK	+0	55%
FERTILITY	SS	+1	65%
	DTC	-1.3	56%
CARCASE	EMA	+2.2	54%
	RIB	-0.4	59%
	RUMP	-0.7	58%
	RBY	+0.7	48%
	IMF	+0.2	56%
PNS	PNS	+4.2	42%
	Flight Time	+0.2	64%
\$ INDEX	DOM	+17	
	EXP	+26	



# GYRANDA R696 (PS)

'S' BULL

GYR20MR696

18/10/2019 (21 mths)

GYRANDA FRANKLIN F238 (P)

**SIRE: GYRANDA MULGA BILL M482 (P)**

GYRANDA Z131

GYRANDA FOR REAL F136 (PS)

**DAM: GYRANDA K255 (P)**

GYRANDA C537

**Notes:** A very quiet, big framed poll bull with a lovely dark coat. By low birthweight sire Mulga Bill he should be suitable for heifers and carries excellent IMF data. Dam Gyranda K255 (P) has weaned four calves in five years.

Dam: C.I. 497 days

Morphology: 69%

Wt \_\_\_\_\_

Sc \_\_\_\_\_

\$



GROWTH	200D	+10	67%
	400D	+21	67%
	600D	+26	69%
	MWT	+40	63%
	MILK	+2	49%
FERTILITY	SS	+0.5	69%
	DTC	-3.5	51%
CARCASE	EMA	+0.2	51%
	RIB	+0.1	59%
	RUMP	+0.3	58%
	RBY	-0.4	46%
	IMF	+0.6	58%
PNS	PNS	-0.6	42%
	Flight Time	+0.63	68%
\$ INDEX	DOM	+13	
	EXP	+21	



# GYRANDA R548 (PS)(AI)

'S' BULL

GYR20MR548

18/09/2019 (22 mths)

ROSEVALE BANDITO B8

**SIRE: ROSEVALE JETHRO J208 (AI) (PS)**

ROSEVALE NANCY B161 (P)

ROWANLEA DUNTRON D24 (PS)

**DAM: GYRANDA G111**

GYRANDA Z567



**Notes:** A long bull. Good loin and plenty of carcass. This is an A.I. calf by Rosevale Jethro J208 meaning a low birthweight bull suitable for heifers. This bull carries the highest Days to Calving Fertility EBVs in the draft alongside exceptionally good fat and IMF data. His Dam - Gyranda G111 is a Duntroon cow that - as expected - maintains a perfect calving record weaning nine so far. Her last bull calf sold to Blue Luke last year for \$9000.

Dam: C.I. 364 days

Morphology: 75%

Wt \_\_\_\_\_

Sc \_\_\_\_\_

\$

GROWTH	200D	+3	70%
	400D	+9	70%
	600D	+21	71%
	MWT	+6	67%
	MILK	-1	58%
FERTILITY	SS	+3.1	71%
	DTC	-13.6	60%
CARCASS	EMA	+1.6	57%
	RIB	+2	63%
	RUMP	+1.6	62%
	RBV	+0.4	52%
	IMF	+0.2	61%
PNS	PNS	+4.2	51%
	Flight Time	-0.05	70%
\$ INDEX	DOM	+22	
	EXP	+40	



# GYRANDA R530 (PP)

'S' BULL

GYR20MR530

16/09/2019 (22 mths)

ROSEVALE BATTALLION E622 (P)

**SIRE: ROWANLEA KLUGER K32 (P)**

ROWANLEA E31 (P)

TYNDALE REPLAY 167 (AI) (P)

**DAM: GYRANDA H281 (P)**

GYRANDA Z165



**Notes:** A very tidy homozygous poll bull with a slick coat and smooth lines throughout. Good fat data and IMF at the top of the breed. Dam Gyranda H281 (P) has weaned six calves in seven years. Her dam - Gyranda Z165 - weaned 10/10.

Dam: C.I. 436 days

Morphology: 83%

Wt \_\_\_\_\_

Sc \_\_\_\_\_

\$

GROWTH	200D	+12	67%
	400D	+13	67%
	600D	+19	69%
	MWT	+17	63%
	MILK	+3	56%
FERTILITY	SS	+0.2	69%
	DTC	-5.1	56%
CARCASS	EMA	+0.9	53%
	RIB	+1.8	60%
	RUMP	+2.2	59%
	RBV	-1	49%
	IMF	+0.8	58%
PNS	PNS	+2.4	43%
	Flight Time	+0.11	63%
\$ INDEX	DOM	+8	
	EXP	+17	





# GYRANDA R436 (P)

'S' BULL

GYR20MR436

5/09/2019 (22 mths)

DANGARFIELD PENROSE P194 (P)

**SIRE: GYRANDA MOBY DICK M224 (P)**

GYRANDA F249 (P)

ROSEVALE ULYSSES H190 (P)

**DAM: GYRANDA L455**

GYRANDA C853

Notes: Dark polled bull with a good head and tidy sheath.

Dam: C.I. 357 days

Morphology: 61%

Wt \_\_\_\_\_

Sc \_\_\_\_\_

\$

GROWTH	200D	+10	65%
	400D	+10	66%
	600D	+19	68%
	MWT	+17	62%
	MILK	-1	47%
FERTILITY	SS	+0.4	68%
	DTC	-2.2	49%
CARCASE	EMA	+2.8	51%
	RIB	+2.3	57%
	RUMP	+2.6	56%
	RBY	+0.4	45%
	IMF	+0	56%
\$ INDEX	PNS	-0.2	38%
	Flight Time	+0.29	67%
\$ INDEX	DOM	+13	
	EXP	+19	



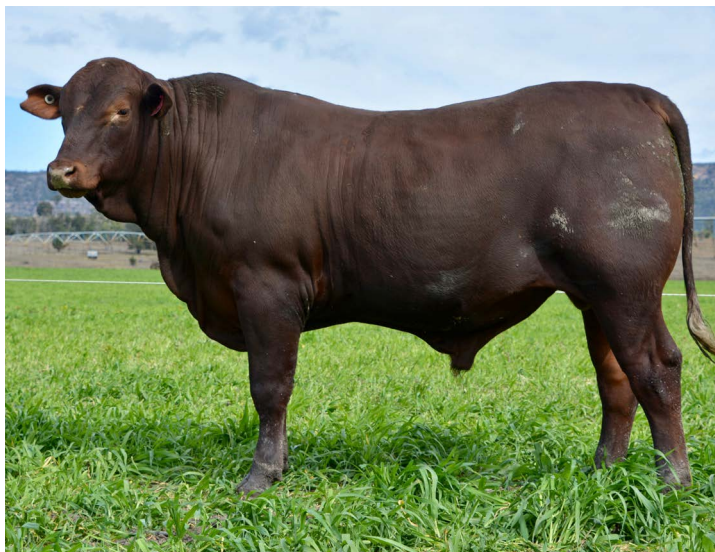


# GYRANDA R104 (PS)

'S' BULL

GYR20MR104

1/09/2019 (22 mths)



**LOT 88.**

WIGHTFIELDS DOWNPOUR G21 (P)

**SIRE: GYRANDA NEWTON N202 (PP)(AI)**

GYRANDA F349 (P)

GYRANDA FOR REAL F136 (PS)

**DAM: GYRANDA J167**

GYRANDA C855



**Notes:** Long and deep in the flank, this is a standout bull with his slick coat, clean lines and sirey outlook. One of an exciting cohort by new sire Gyranda Newton he has excellent carcase and fertility characteristics. Dam J167 calved at three but has had six calves in six years since. Her dam C855 - had nine calves in ten years. A low birthweight calf at 35kg and suitable for heifers.

**Dam:** C.I. 382 days

**Morphology:** 79%

Wt \_\_\_\_\_

Sc \_\_\_\_\_

\$

GROWTH	200D	+10	71%
	400D	+14	69%
	600D	+23	71%
	MWT	+32	64%
	MILK	-1	51%
FERTILITY	SS	+0.2	70%
	DTC	-5.3	51%
CARCASE	EMA	+3	54%
	RIB	+0.7	60%
	RUMP	+0.9	59%
	RBV	+0.3	48%
	IMF	+0.5	59%
\$ INDEX	PNS	+2.3	45%
	Flight Time	+0.14	68%
\$ INDEX	DOM	+16	
	EXP	+27	



# GYRANDA R630 (P)

'S' BULL

GYR20MR630

15/10/2019 (21 mths)



**LOT 89.**

ROSEVALE DEMOCRAT G268 (P)

**SIRE: GYRANDA MONTO M272 (P)**

GYRANDA D549

GYRANDA HUMPHREY H456

**DAM: GYRANDA M529 (P)**

GYRANDA E655 (P)

**Notes:** A dark, early maturing bull with a slick coat, good sheath and excellent carcase. Dam M529 (P) has weaned three calves in four years, her last selling for \$8000 to Hamish McClymont.

**Dam:** C.I. 367 days

**Morphology:** 80%

**Wt** \_\_\_\_\_

**Sc** \_\_\_\_\_

\$

GROWTH	200D	+15	67%
	400D	+20	68%
	600D	+29	69%
	MWT	+27	63%
	MILK	+0	50%
FERTILITY	SS	+2.7	69%
	DTC	-1.8	50%
CARCASE	EMA	+3.8	52%
	RIB	+1.1	59%
	RUMP	+0.7	58%
	RBV	+0.9	46%
	IMF	-0.2	58%
\$ INDEX	PNS	-1.2	36%
	Flight Time	+0.06	68%
\$ INDEX	DOM	+21	
	EXP	+26	



## GYRANDA R124 (P)

'S' BULL

GYR20MR124

25/08/2019 (23 mths)

DANGARFIELD PENROSE P194 (P)

**SIRE: GYRANDA MOBY DICK M224 (P)**

GYRANDA F249 (P)

GYRANDA GARWOOD G684 (PS)

**DAM: GYRANDA L361 (P)**

GYRANDA F203

**Notes:** A lighter coloured poll bull but my, what a package. Quiet, tall and long with slick coat, deep in the flank and oozing breed character. Dam Gyranda L361 (P) calved at three and has weaned three calves in four years. Her Dam - F203 - also calved at three but has maintained a perfect record to wean nine calves since.

Dam: C.I. 362 days

Morphology: 78%

Wt \_\_\_\_\_

Sc \_\_\_\_\_

\$

GROWTH	200D	+21	67%
	400D	+28	67%
	600D	+43	69%
	MWT	+37	63%
	MILK	+0	50%
FERTILITY	SS	+0.6	69%
	DTC	+1	53%
CARCASE	EMA	+5.8	53%
	RIB	+0.2	60%
	RUMP	+0.5	59%
	RBY	+0.9	48%
	IMF	-0.1	58%
\$ INDEX	PNS	+7.7	42%
	Flight Time	+0.23	67%
\$ INDEX	DOM	+24	
	EXP	+29	



## GYRANDA R350 (PS)

'S' BULL

GYR20MR350

20/08/2019 (23 mths)

STRATHMORE STR/E414

**SIRE: STRATHMORE M680 MEGANE (PP)**

STRATHMORE STR/E175

GYRANDA DYNAMIC D444 (P)

**DAM: GYRANDA L343**

GYRANDA F295

**Notes:** A lovely deep bull from flank to shoulder. Poll scurr, soft and easy going. Dam L343 calved at two and has weaned four calves in five years.

Dam: C.I. 505 days

Morphology: 91%

Wt \_\_\_\_\_

Sc \_\_\_\_\_

\$

GROWTH	200D	+13	63%
	400D	+21	65%
	600D	+31	67%
	MWT	+42	60%
	MILK	+1	36%
FERTILITY	SS	+1	66%
	DTC	+5	46%
CARCASE	EMA	+0.3	50%
	RIB	+0.2	57%
	RUMP	-0.2	56%
	RBY	+0.1	44%
	IMF	-0.2	55%
\$ INDEX	PNS	+	%
	Flight Time	+0.16	65%
\$ INDEX	DOM	+8	
	EXP	+10	



# GYRANDA R254

'S' BULL

GYR20MR254

10/09/2019 (22 mths)

EIDSVOLD STATION A166 (PS)

**SIRE: GYRANDA FOR REAL F136 (PS)**

GYRANDA CALAMITY C113

EIDSVOLD STATION FLETCH F24

**DAM: GYRANDA K487 (P)**

GYRANDA F291 (P)



**Notes:** An outstanding dark bull with a sirey outlook, loose skin and good depth in his flank. A quiet bull carrying excellent growth and carcass EBVs. His Dam K487 (P) calved at two and has weaned five calves in six years.

Dam: C.I. 446 days

Morphology: 85%

Wt \_\_\_\_\_

Sc \_\_\_\_\_

\$

GROWTH	200D	+17	68%
	400D	+25	69%
	600D	+39	70%
	MWT	+42	65%
	MILK	-4	56%
FERTILITY	SS	+0.9	71%
	DTC	-1.6	56%
CARCASS	EMA	+3.7	54%
	RIB	+1.1	62%
	RUMP	+1.5	61%
	RBY	+0.4	49%
	IMF	+0.4	59%
	PNS	+0.6	48%
	Flight Time	+0.44	69%
\$ INDEX	DOM	+22	
	EXP	+31	



2021 marks 50 years of the Isolated Children's Parents' Association (ICPA) Australia-wide! Thank you to Dawson Valley ICPA for catering at the Gyranda sale and helping achieve better educational outcomes for our rural and remote kids for decades.



# GYRANDA RAMSHACKLE R288

'S' BULL

GYR20MR288

1/09/2019 (22 mths)



**LOT 93.**

ROSEVALE BATTALLION E622 (P)

**SIRE: ROWANLEA KLUGER K32 (P)**

ROWANLEA E31 (P)

EIDSVOLD STATION B188

**DAM: GYRANDA E177**

GYRANDA C167

**Notes:** Massive growth and EMA figures gel perfectly with what you see in this bull. Dark with a tidy sheath, lovely spring of rib and acres of loin. It is worth noting that at 0.72 for flight time this bull carries the best temperament EBV's in the draft. So for a quiet meat machine...look no further. Dam E177 calved at two and weaned eight calves in ten years. Her Dam - C167 was a Crackerjack Cow that weaned 6 from 6.

**Dam:** C.I. 470 days

**Morphology:** 90%

Wt \_\_\_\_\_

Sc \_\_\_\_\_

\$

GROWTH	200D	+26	67%
	400D	+44	68%
	600D	+61	70%
	MWT	+83	64%
	MILK	+2	54%
FERTILITY	SS	+2	70%
	DTC	+1.1	55%
CARCASE	EMA	+3.7	55%
	RIB	-1.4	61%
	RUMP	-2.1	60%
	RBV	+1.4	49%
	IMF	-0.2	59%
\$ INDEX	PNS	-0.4	42%
	Flight Time	+0.76	69%
\$ INDEX	DOM	+33	
	EXP	+41	



# GYRANDA ROBIN HOOD R248

'S' BULL

GYR20MR248

24/09/2019 (22 mths)



**LOT 94.**

EIDSVOLD STATION A166 (PS)

**SIRE: GYRANDA FOR REAL F136 (PS)**

GYRANDA CALAMITY C113

GYRANDA ENIGMA E124

**DAM: GYRANDA K689**

GYRANDA ARCTIC A247

**Notes:** A stylish young bull. Long in the body, loose skin and an excellent sheath. What a combination of data! This bull has EBV figures in the top five percent of the breed for growth and the top 10% for eye muscle, whilst also being in the top 30% of the breed for fertility ..and a 93% morphology to boot. His Dam Gyranda K689 calved at two and has weaned 7/7, including a \$6000 bull sold to the Knuths last year.

**Dam:** C.I. 377 days

**Morphology:** 93%

Wt \_\_\_\_\_

Sc \_\_\_\_\_

\$

GROWTH	200D	+21	70%
	400D	+35	70%
	600D	+44	72%
	MWT	+58	68%
	MILK	-4	61%
FERTILITY	SS	+1.8	72%
	DTC	-3	60%
CARCASE	EMA	+3.7	56%
	RIB	+0.5	63%
	RUMP	+0.5	62%
	RBV	+1	51%
	IMF	+0.1	61%
\$ INDEX	PNS	+1.8	51%
	Flight Time	+0.36	71%
\$ INDEX	DOM	+33	
	EXP	+39	



# GYRANDA R414 (P)

'S' BULL

GYR20MR414

9/10/2019 (21 mths)



**LOT 95.**

DANGARFIELD PENROSE P194 (P)

**SIRE: GYRANDA MOBY DICK M224 (P)**

GYRANDA F249 (P)

TOOKEY CREEK GURU G34 (P)

**DAM: GYRANDA L829 (P)**

GYRANDA J311

**Notes:** A fantastic depth of carcase in this young poll bull. Deep from shoulder to flank. Soft with a good sheath. One of the heaviest bulls in the draft, this bull has the EBV data to match it, but his carcase data is yet another amazing combination of breed leading muscle and fats. Dam Gyranda L829 (P) calved at two and has weaned 5/5 to date.

**Dam:** C.I. 359 days

**Morphology:** 87%

**Wt** \_\_\_\_\_

**Sc** \_\_\_\_\_

\$

<b>GROWTH</b>	200D	+23	66%
	400D	+29	66%
	600D	+43	68%
	MWT	+32	62%
	MILK	+0	47%
<b>FERTILITY</b>	SS	+1.7	68%
	DTC	+7.8	50%
<b>CARCASE</b>	EMA	+4.8	52%
	RIB	+0.9	54%
	RUMP	+0.8	53%
	RBV	+0.2	45%
	IMF	-0.1	56%
<b>\$ INDEX</b>	PNS	+0.3	37%
	Flight Time	-0.04	67%
<b>\$ INDEX</b>	DOM	+15	
	EXP	+13	



## Sale Summary 2021

	NO.	GROSS \$	TOP \$	AVG \$
GYRANDA ELITE BULLS				
CLASSIFIED 'S' BULLS				
PUREBRED HERD BULLS				
<b>TOTAL</b>				



*“Thank you for your support”*

*Nikki, Peter, Josephine, Patrick, Dominic and Christopher Mahony*

## STUD STOCK — AUCTION TERMS AND CONDITIONS OF SALE

**IMPORTANT NOTICE: All bids shall be treated as offers made upon the following Terms and Conditions of Sale and all persons present are admitted to attend the sale on the basis that they have notice of these Terms and Conditions.**

1. The highest bidder shall, subject to Condition 2, be the Purchaser provided that the Vendor reserves the right to bid either by himself or through his Agent or Auctioneer and should any dispute arise among the bidders for any lot, during or immediately after the sale of the lot, it shall be settled at the Auctioneers absolute discretion who may, should one of the disputants advance, put the lot or lots up again. The bidding from time to time shall be regulated by the Auctioneer and no bid shall be retracted.
  2. The sale will be conducted on a "Sale" or "No Sale" basis whereby the lot for sale shall be knocked down to the highest bidder, but the sale will be subject to the acceptance of the highest bid by the Vendor who will immediately after the fall of the hammer declare "Sale" or "No Sale". Should the Vendor reject the bid of the highest bidder such bidder will have the right of first refusal of the lot at the Vendor's nominated price for one hour after the lot has been passed out of the ring on the Terms and Conditions herein set forth in so far as they shall apply.
  3. The details of the Purchaser, the purchase price and the lot sold as recorded by the sale clerk for and on behalf of the Auctioneer shall be equally binding on both Purchaser and Vendor.
  4. The Auctioneer expressly reserves the right, without giving any reasons therefore, to:
    - (a) Refuse to acknowledge any bid;
    - (b) Withdraw any lot or lots before or during the sale;
    - (c) Exclude any person from the auction venue should it think fit.
  5. Each lot in all cases shall be at the risk and expense of the Purchaser upon acceptance of his bid by the Vendor or upon acceptance of the highest bidder's offer by the Vendor whichever shall be the earlier.
  6. Except as expressly provided in these Terms and Conditions of Sale no guarantee or warranty shall be given in respect of any lot sold under these Conditions as to pedigree, sex, age, breeding condition or otherwise howsoever, and no guarantee, warranty or condition whatsoever shall be implied from any affirmation made before or at the time of the sale, or from any circumstances of the sale, but in all cases where a guarantee is intended the same shall attach and be enforceable only if reduced to writing before delivery of the lot and signed by the Vendor or by the Auctioneer acting as agent for the Vendor, and the absence of such writing shall be conclusive evidence in case of dispute that no guarantee, warranty or condition whatsoever was given or implied.
  7. In the event of any dispute in respect to the sale of any lot:
    - (i) The Purchaser shall nevertheless be obliged to pay to the Auctioneer the full purchase price and any other monies or interest payable by the Purchaser in accordance with these terms and conditions;
    - (ii) The Vendor and the Purchaser shall resolve the dispute between themselves;
    - (iii) The Auctioneer shall have no liability or responsibility in regard to the dispute; and
    - (iv) No lot shall be returned to the Auctioneer and the Purchaser shall indemnify the Auctioneer for all costs, expenses and damages which the Auctioneer is put to or incurs by reason of the Purchaser so doing.
  8. The name of the Vendor for whom the Auctioneer acts is acknowledged to have been furnished to Purchasers prior to the sale and further particulars will in all cases be furnished to a Purchaser if required. In the case of any disputes the remedy of the Purchaser shall be against the Vendor only and in no case or under any circumstances against the Auctioneer who is to be regarded for all intents and purposes as agent for a disclosed principal.
  9. (a) **PAYMENT** — Unless prior credit arrangements have been made in writing with the Auctioneer the full purchase price for each lot shall be due and payable to the Auctioneer in cash upon acceptance of the highest bid or the highest bidder's offer by the Vendor and prior to delivery. Notwithstanding that delivery is given to or possession obtained by the purchaser or his representative prior to the payment of the purchase money in full the property in any lot which is sold shall not pass to the Purchaser until the full purchase price and all cheques, promissory notes, bills of exchange, acceptance orders or drafts given in connection with such payment have been paid and liquidated, and until property shall pass, the Purchaser shall hold such lot as bailee, provided that in all cases should such payment not have been made and liquidated within 14 days of the date of the sale the Auctioneer reserves the right to:—
    - (i) Rescind the contract on behalf of the Vendor and repossess and resell any lot;
    - (ii) Recover from the Purchaser interest upon the purchase price at a rate per annum which aggregates the AMBA Bill Rate plus two percentum. For the purposes of this condition, the expression "the AMBA Bill Rate" is the rate published by the Australian Merchant Bankers Association in good faith as at the date of the sale as its bill rate for 180 day bills of exchange expressed as a percentage per annum. If at any time the AMBA Bill Rate becomes unavailable for any reason, the Auctioneer shall determine and advise the Purchaser of the interest rate to apply for the purposes of this condition.
  - (b) The Auctioneer is selling as the del credere agent of the Vendor and the full purchase price of any lot sold shall be payable by the Purchaser to the Auctioneer and be fully recoverable by the Auctioneer in its own name.
10. If the Purchaser shall neglect or fail to comply with any of the within conditions, any lot purchased by him may be immediately resold by public auction or private contract, with or without notice, at the risk of the former Purchaser, who will be held responsible for all loss and expenses arising out of such resale, and shall not participate in any profit accruing therefrom.
11. Any Vendor or Purchaser removing the sale number from any lot after it has been sold will fully indemnify all affected parties for any loss, costs or damage should the lot be wrongly delivered.
12. The Purchasers, if any more than one, shall be jointly and severally bound by these Terms and Conditions, and shall jointly and severally carry out and perform same.
13. Any person who advances a bid on a lot shall do so on the expressed condition and understanding that should that person's bid be the highest bid and such bid is accepted by the Vendor, then that person will be held personally liable for the price so agreed upon, regardless of the fact that that person may be acting on behalf of another party, either disclosed or undisclosed to the Vendor or Auctioneer, provided however, that this Condition shall not in any way negate the Vendor's right to claim against any principal and in such case the bidder's liability shall be construed to be by way of guarantee.
14. The Auctioneer may, should it think fit, make arrangements on a Purchaser's behalf for the feeding, watering, trucking, shipping of and general attendance to any lot after sale but no responsibility will be accepted by the Auctioneer and all such service will be at the Purchaser's risk and expense.
15. No lot will be delivered until the sales invoice has been checked and signed by the Purchaser or his duly authorised representative.
16. (a) Each lot in all cases shall be sold with all faults, if any, and excepting those conditions and warranties implied by the Trade Practices Act or any applicable State legislation which cannot be contractually excluded and excepting conditions and warranties expressly contained in these Terms and Conditions of Sale, any express or implied condition, statement of warranty, statutory or otherwise, is hereby excluded. The Auctioneer is not liable in respect of any error, misdescription or omission in any particulars appearing or stated regarding the description of pedigrees of any lot offered for sale and no such error, misdescription or omission shall entitle the Purchaser to annul the sale or reject the lot or claim any compensation, damage or abatement in price.
- (b) Each lot will be sold subject to passing all veterinary tests required by the law of the state or country to which the Purchaser intends to transport that particular lot, such tests to be undertaken at the Purchaser's expense and concluded immediately following the sale. In the

event of a lot failing to pass these tests, the sale shall be null and void, any purchase moneys paid by the Purchaser shall be refunded and property in the lot shall revert to or remain with the Vendor.

17. Guarantees of Fertility:—

- (1) BULLS - Save and except for calves at foot, all bulls are guaranteed breeders and to so prove by the later of:
  - (a) six months after the date of sale or
  - (b) the animal reaching the age of 24 months
- (2) FEMALES - Save and except for female calves at foot, all females are guaranteed to be in calf or go into calf by the later of:
  - (a) 6 months of the date of sale
  - (b) the animal reaching the age of 30 months

A positive pregnancy test certified by a qualified veterinary surgeon shall be sufficient evidence that the animal is in calf.
- (3) Claims under Clauses 17(1) and 17(2). A claim that an animal has failed to satisfy a guarantee of fertility under Clause 17(1) or 17(2) must be made to the Vendor within the relevant guarantee period but prior to the animal entering a quarantine area other than on the Vendor's property.
  - (a) All claims must be accompanied by a certificate from a registered veterinarian surgeon in accordance with the guidelines established by the Australian Association of Cattle Veterinarians which must clearly identify the basis of the claim.
  - (b) Subject to Clause 17(9), infertility resulting from injury or disease occurring after the sale of the animal is not covered by this guarantee.
  - (c) The Vendor retains the right to have the animal placed on a property nominated by him or returned to his own property for further assessment of fertility for a period not exceeding six months. If the animal proves fertile within the period such status must be confirmed by a certificate issued by a registered veterinary surgeon in accordance with the guideline established by the Australian Association of Cattle Veterinarians and costs incurred must be borne by the Purchaser. If the animal is not proven fertile within the period, the costs incurred must be borne by the Vendor.
- (4) LIABILITY OF A VENDOR - Except for costs defined elsewhere in the conditions of sale, the liability of a Vendor in respect of claims relating to fertility shall not exceed the purchase price of the animal(s) or provide mutually agreed upon replacement animal(s).
- (5) In the event of a claim being substantiated:
  - (a) The purchase price shall be refunded within 14 days unless a mutually agreed upon replacement animal has been provided.
  - (b) The animal/s which are the subject of the claim shall automatically become the property of the Vendor and be returned to him or disposed of according to his instruction at his expense.
- (6) Subject to Clause 17(9), this guarantee is of no effect if:
  - (a) The animal is returned to the Vendor.
    - (i) In poor physical condition or with any injury;
    - (ii) Tests carried out on behalf of the Vendor within fourteen days of such return proved positive to any diseases which may affect the animal's fertility or ability to breed naturally; or
  - (b) The Purchaser has collected and stored semen from a bull or
  - (c) The Purchaser attempted any form of embryo collection from a female.
- (7) In the event of a dispute as to whether a lot is a breeder, such dispute shall be resolved by the Vendor and the Purchaser. The Auctioneer, while he will use his best endeavours to assist, shall have no liability or responsibility in that regard. If an animal is alleged or proved not to be a breeder, the Purchaser must nevertheless pay the Auctioneer the full purchase price and any other monies or interest payable by the Purchaser in accordance with these Terms and Conditions.
- (8) EVIDENCE OF FERTILITY — A Certificate issued by a registered veterinary surgeon at or before the time of sale than an animal is fertile (unless it is a certificate stating in respect of a female that she is in calf at the time of sale) does not, of itself, satisfy or discharge the Vendor's obligations under the guarantee of fertility given under this Clause 17. All animals, except calves at foot, must prove their fertility within the relevant guarantee period.
- (9) RELIEF FROM GUARANTEE — If the Vendor seeks to be relieved from the obligations which would otherwise be imposed upon him by this clause by virtue of Clauses 17(3)(b) or 17(6)(a), the onus of proof is upon the Vendor to establish that:
  - (a) The animal suffered the injury or disease or is in poor physical condition due to circumstances and events occurring after the sale, and
  - (b) The injury, disease or physical condition is the sole cause of the animal's infertility or failure to prove fertility within the guarantee period.
- (10) DEFINITION — For the purpose of this Clause 17, the expression "guarantee period" means:
  - (a) in relation to bulls — the period specified in Clause 17(1) as being the period in which the bull must prove his fertility; and
  - (b) in relation to females — the period specified in Clause 17(2) as being the period in which the female must go into calf.
18. (a) Each lot shall be at the risk of the Vendor in respect of any damage or injury, whether by disease, accident or otherwise, or whether caused by the negligence of the Auctioneer for the period that the lot be in the custody of the Auctioneer, unless such lots shall have been sold in which latter case such lot shall be at the risk of the Purchaser in all such respects.
- (b) If any Vendor brings to the sale premises any lot which is dangerous, or infected with any disease, that Vendor shall be liable for all injury, damages, costs, losses or expenses which the Auctioneer may sustain, incur or be put to either directly or indirectly as a result of the Vendor so doing. The Auctioneer reserves the right, at its absolute discretion, to exclude from the sale, or put out of the sale venue or dispose of, any lot which in its opinion shows signs of any disease, whether infectious, contagious or not, or of any serious fault or of being dangerous.
19. DELIVERY — Except at the discretion of the Auctioneer no lot shall be delivered to the Purchaser unless payment of the purchase money together with any additional charges incurred including those expenses incurred by the Auctioneer pursuant to Condition 14 hereof, is first made by the Purchaser to the Auctioneer. Release of lots may be withheld by the Auctioneer until personal cheques are cleared.
20. In these Conditions:—
  - (a) References to "Auctioneer" shall be taken to mean as the context so admits, the Selling Agent or any member, subsidiary or related corporation or body, officer, agent or employee thereof, authorised by the Vendor to conduct the sale of the lot;
  - (b) "Purchaser" shall have the meaning ascribed to it in Condition 1;
  - (c) "Vendor" shall mean the person or corporation upon whose account lots are offered for sale and where a stud or farm is named shall mean the proprietor of that stud or farm;
  - (d) "Lot" shall be taken to mean the animal offered for sale and/or sold by the Auctioneer on behalf of a Vendor.

\*\*\*\*\*

**IMPORTANT NOTICE**

The Selling Agent, its members, subsidiary or related corporations, officers, agents, and employees for themselves and for those for whom they act while exercising due care provide all information without responsibility and give no guarantee whatsoever as to its accuracy.

All persons who attend the Sale do so entirely at their risk and the Selling Agent, its members, subsidiary or related corporations, officers, agents, employees and its principals, for themselves and for those for whom they act, do not assume or accept any responsibility or liability of whatever nature for any injury or damage whatsoever which may occur.

The hammer price is exclusive of GST but GST will be applied to the final hammer price and included in the invoice.

# Stay safe with the Check In Qld app



Check In Qld

Download the app from



**Open the app and scan the QR code  
to register your visit**

Gyranda Nominees Pty Ltd

## Gyranda



(414)9358021471615

Can't scan? Enter the code **471615** manually to check in.

Thank you for supporting COVID-19 contact tracing efforts  
and doing your bit to keep Queenslanders safe.

Questions? Call the **COVID-19 helpline 134 COVID (13 42 68)**



**Queensland  
Government**